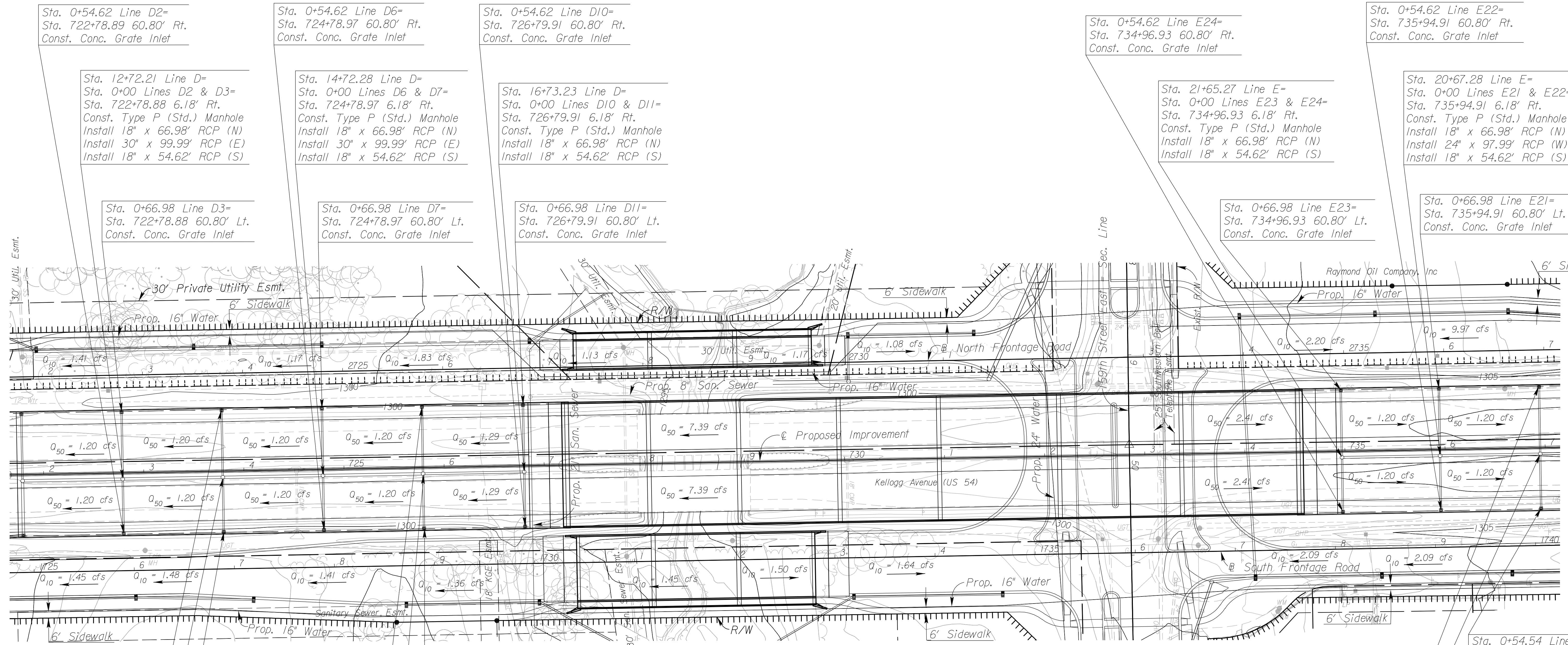


STATE	PROJECT NO.	YEAR	SHEET NO.	TOTAL SHEETS
KANSAS	472 84614	.	108	534



Sta. 0+54.62 Line D2=  
Sta. 722+78.89 60.80' Rt.  
Const. Conc. Grate Inlet

Sta. 0+54.62 Line D6=  
Sta. 724+78.97 60.80' Rt.  
Const. Conc. Grate Inlet

Sta. 0+54.62 Line D10=  
Sta. 726+79.91 60.80' Rt.  
Const. Conc. Grate Inlet

Sta. 0+54.62 Line E24=  
Sta. 734+96.93 60.80' Rt.  
Const. Conc. Grate Inlet

Sta. 0+54.62 Line E22=  
Sta. 735+94.91 60.80' Rt.  
Const. Conc. Grate Inlet

Sta. 12+72.21 Line D=  
Sta. 0+00 Lines D2 & D3=  
Sta. 722+78.88 6.18' Rt.  
Const. Type P (Std.) Manhole  
Install 18" x 66.98' RCP (N)  
Install 30" x 99.99' RCP (E)  
Install 18" x 54.62' RCP (S)

Sta. 14+72.28 Line D=  
Sta. 0+00 Lines D6 & D7=  
Sta. 724+78.97 6.18' Rt.  
Const. Type P (Std.) Manhole  
Install 18" x 66.98' RCP (N)  
Install 30" x 99.99' RCP (E)  
Install 18" x 54.62' RCP (S)

Sta. 16+73.23 Line D=  
Sta. 0+00 Lines D10 & D11=  
Sta. 726+79.91 6.18' Rt.  
Const. Type P (Std.) Manhole  
Install 18" x 66.98' RCP (N)  
Install 18" x 54.62' RCP (S)

Sta. 21+65.27 Line E=  
Sta. 0+00 Lines E23 & E24=  
Sta. 734+96.93 6.18' Rt.  
Const. Type P (Std.) Manhole  
Install 18" x 66.98' RCP (N)  
Install 18" x 54.62' RCP (S)

Sta. 20+67.28 Line E=  
Sta. 0+00 Lines E21 & E22=  
Sta. 735+94.91 6.18' Rt.  
Const. Type P (Std.) Manhole  
Install 18" x 66.98' RCP (N)  
Install 24" x 97.99' RCP (W)  
Install 18" x 54.62' RCP (S)

Sta. 0+66.98 Line D3=  
Sta. 722+78.88 60.80' Lt.  
Const. Conc. Grate Inlet

Sta. 0+66.98 Line D7=  
Sta. 724+78.97 60.80' Lt.  
Const. Conc. Grate Inlet

Sta. 0+66.98 Line D11=  
Sta. 726+79.91 60.80' Lt.  
Const. Conc. Grate Inlet

Sta. 0+66.98 Line E23=  
Sta. 734+96.93 60.80' Lt.  
Const. Conc. Grate Inlet

Sta. 0+66.98 Line E21=  
Sta. 735+94.91 60.80' Lt.  
Const. Conc. Grate Inlet

Sta. 0+54.62 Line D4=  
Sta. 723+78.87 60.80' Rt.  
Const. Conc. Grate Inlet

Sta. 0+54.62 Line D8=  
Sta. 725+78.95 60.80' Rt.  
Const. Conc. Grate Inlet

Sta. 0+54.54 Line E20=  
Sta. 736+94.90 60.80' Rt.  
Const. Conc. Grate Inlet

Sta. 13+72.20 Line D=  
Sta. 0+00 Lines D4 & D5=  
Sta. 723+78.87 6.18' Rt.  
Const. Type P (Std.) Manhole  
Install 18" x 66.98' RCP (N)  
Install 30" x 100.09' RCP (E)  
Install 18" x 54.62' RCP (S)

Sta. 15+72.27 Line D=  
Sta. 0+00 Lines D8 & D9=  
Sta. 725+78.95 6.18' Rt.  
Const. Type P (Std.) Manhole  
Install 18" x 66.98' RCP (N)  
Install 24" x 100.96' RCP (E)  
Install 18" x 54.62' RCP (S)

Sta. 19+67.30 Line E=  
Sta. 0+00 Lines E19 & E20=  
Sta. 736+94.90 6.18' Rt.  
Const. Type P (Std.) Manhole  
Install 18" x 67.07' RCP (N)  
Install 24" x 99.99' RCP (W)  
Install 18" x 54.54' RCP (S)

Sta. 0+66.98 Line D5=  
Sta. 723+78.86 60.80' Lt.  
Const. Conc. Grate Inlet

Sta. 0+66.98 Line D9=  
Sta. 725+78.95 60.80' Lt.  
Const. Conc. Grate Inlet

Sta. 0+67.07 Line E19=  
Sta. 736+94.90 60.80' Lt.  
Const. Conc. Grate Inlet

**UTILITIES**

- |                   |                       |
|-------------------|-----------------------|
| Cable             | Cox Communications    |
| Gas               | Kansas Gas Service    |
| Power             | Westar                |
| Sanitary Sewer    | Wichita Water & Sewer |
| Storm Water Sewer | Wichita Water & Sewer |
| Telephone         | AT&T                  |
| Traffic Signal    | City of Wichita       |
| Water             | Wichita Water & Sewer |

$Q_{50} = x.xx$  cfs - DESIGN YEAR FLOW PER INLET  
See Sh. No's. 136-139 for San. Sewer Plans.  
See Sh. No's. 140-162 for Water Plans.

**CITY OF WICHITA**

**EAST KELLOGG**  
**STORM WATER SEWER PLAN**  
**STA. 722+00 TO STA. 737+00**

2:41 PM  
 2/18/2011  
 J:\CIVIL\07432\DWG\SWS\EK2\ML\_PLAN\EK2ML\_SWPLOB.DWG  
 SURV. - PLOT CADD DES. - TR. - CKD. - APP.