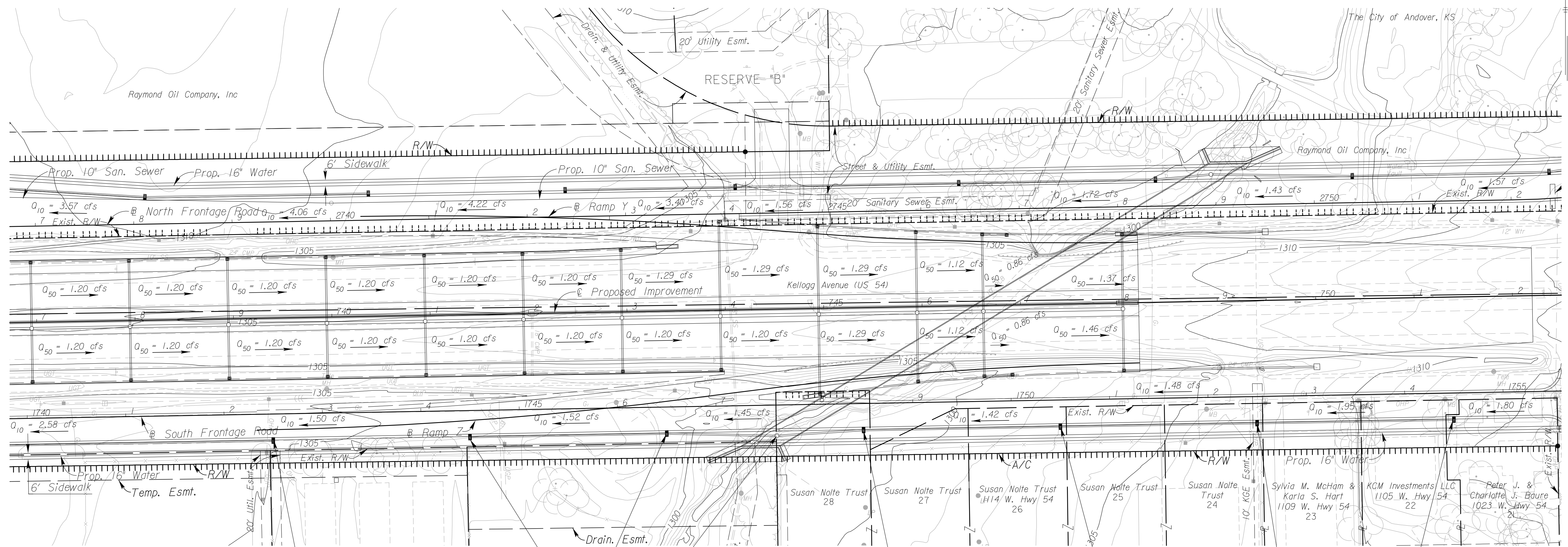


STATE	PROJECT NO.	YEAR	SHEET NO.	TOTAL SHEETS
KANSAS	472 84614	.	118	534



Sta. 26+83.77 Line FS16=  
Sta. 1742+49.54 27.00' Rt.  
@ South Frontage Road  
Const. Curb Inlet, Type 12

Sta. 13+11.97 Line FS17=  
Sta. 1744+49.54 27.00' Rt.  
@ South Frontage Road  
Const. Curb Inlet, Type 12

Sta. 11+11.97 Line FS17=  
Sta. 1746+49.54 27.00' Rt.  
@ South Frontage Road  
Const. Curb Inlet, Type 12  
Install 18" x 200.00' RCP (W)

Sta. 10+00 Line FS17=  
Sta. 10+00 Line FS18=  
Sta. 1747+61.43 31.31 Rt.  
@ South Frontage Road  
Const. Type P (Std.) Manhole Stack  
Install 18" x 111.97' RCP (W)  
Install 18" x 88.22' RCP (E)

Sta. 10+88.22 Line FS18=  
Sta. 1748+49.54 27.00' Rt.  
@ South Frontage Road  
Const. Curb Inlet, Type 12  
Install 18" x 200.00' RCP (E)

Sta. 12+88.22 Line FS18=  
Sta. 1750+49.54 27.00' Rt.  
@ South Frontage Road  
Const. Curb Inlet, Type 12  
Install 18" x 200.00' RCP (E)

Sta. 16+88.22 Line FS18=  
Sta. 1754+49.54 27.00' Rt.  
@ South Frontage Road  
Const. Curb Inlet, Type 12

Sta. 14+88.22 Line FS18=  
Sta. 1752+49.54 27.00'  
@ South Frontage Road  
Const. Curb Inlet, Type 12 Rt.  
Install 18" x 200.00' RCP (E)

2:43 PM  
 2/18/2011  
 J:\CIVIL\07432\DWG\SWSEK2ML PLAN\K2FSSWPLO9.DWG  
 SURV. - PLOT CADD DES. - TR. - APP. - CKD.

- UTILITIES**
- |                   |                       |
|-------------------|-----------------------|
| Cable             | Cox Communications    |
| Gas               | Kansas Gas Service    |
| Power             | Westar                |
| Sanitary Sewer    | Wichita Water & Sewer |
| Storm Water Sewer | Wichita Water & Sewer |
| Telephone         | AT&T                  |
| Water             | Wichita Water & Sewer |

$Q_{50} = x.xx$  cfs - DESIGN YEAR FLOW PER INLET  
 See Sh. No's. 136-139 for San. Sewer Plans.  
 See Sh. No's. 140-162 for Water Plans.

**CITY OF WICHITA**

**SOUTH FRONTAGE ROAD**

**STORM WATER SEWER PLAN**

**STA. 1740+00 TO STA. 1755+00**