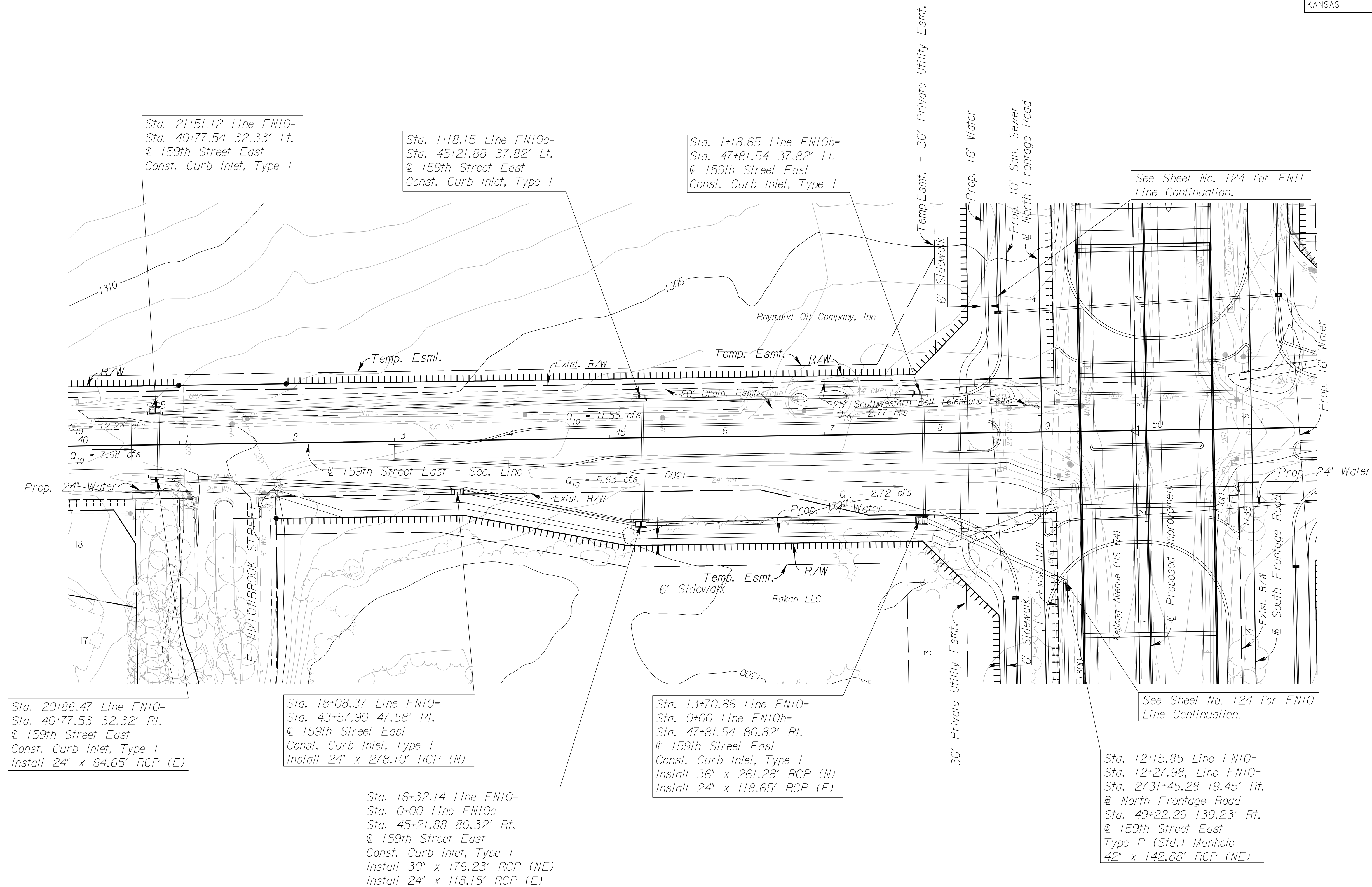
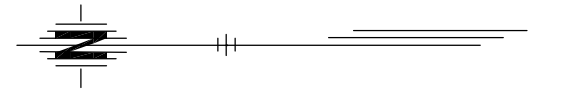


STATE	PROJECT NO.	YEAR	SHEET NO.	TOTAL SHEETS
KANSAS	472 84614	.	129	534



Sta. 21+51.12 Line FN10=
Sta. 40+77.54 32.33' Lt.
@ 159th Street East
Const. Curb Inlet, Type 1

Sta. 1+18.15 Line FN10c=
Sta. 45+21.88 37.82' Lt.
@ 159th Street East
Const. Curb Inlet, Type 1

Sta. 1+18.65 Line FN10b=
Sta. 47+81.54 37.82' Lt.
@ 159th Street East
Const. Curb Inlet, Type 1

See Sheet No. 124 for FN11
Line Continuation.

Sta. 20+86.47 Line FN10=
Sta. 40+77.53 32.32' Rt.
@ 159th Street East
Const. Curb Inlet, Type 1
Install 24" x 64.65' RCP (E)

Sta. 18+08.37 Line FN10=
Sta. 43+57.90 47.58' Rt.
@ 159th Street East
Const. Curb Inlet, Type 1
Install 24" x 278.10' RCP (N)

Sta. 16+32.14 Line FN10=
Sta. 0+00 Line FN10c=
Sta. 45+21.88 80.32' Rt.
@ 159th Street East
Const. Curb Inlet, Type 1
Install 30" x 176.23' RCP (NE)
Install 24" x 118.15' RCP (E)

Sta. 13+70.86 Line FN10=
Sta. 0+00 Line FN10b=
Sta. 47+81.54 80.82' Rt.
@ 159th Street East
Const. Curb Inlet, Type 1
Install 36" x 261.28' RCP (N)
Install 24" x 118.65' RCP (E)

See Sheet No. 124 for FN10
Line Continuation.

Sta. 12+15.85 Line FN10=
Sta. 12+27.98, Line FN10=
Sta. 2731+45.28 19.45' Rt.
@ North Frontage Road
Sta. 49+22.29 139.23' Rt.
@ 159th Street East
Type P (Std.) Manhole
42" x 142.88' RCP (NE)

UTILITIES

- | | |
|-------------------|-----------------------|
| Cable | Cox Communications |
| Gas | Kansas Gas Service |
| Power | Westar |
| Sanitary Sewer | Wichita Water & Sewer |
| Storm Water Sewer | Wichita Water & Sewer |
| Telephone | AT&T |
| Traffic Signal | City of Wichita |
| Water | Wichita Water & Sewer |

$Q_{10} = x.xx$ cfs - DESIGN YEAR FLOW PER INLET
See Sh. No's. 136-139 for San. Sewer Plans.
See Sh. No's. 140-162 for Water Plans.

CITY OF WICHITA
159TH STREET EAST
STORM WATER SEWER PLAN
STA. 40+00 TO STA. 50+00

2:45 PM
2/18/2011
J:\CIVIL\07432\DWG\SWSEK2ML PLAN\K259SWP\LOI.DWG
SURV. - PLOT CADD DES. - DR. - TR. - APP. - CKD. -