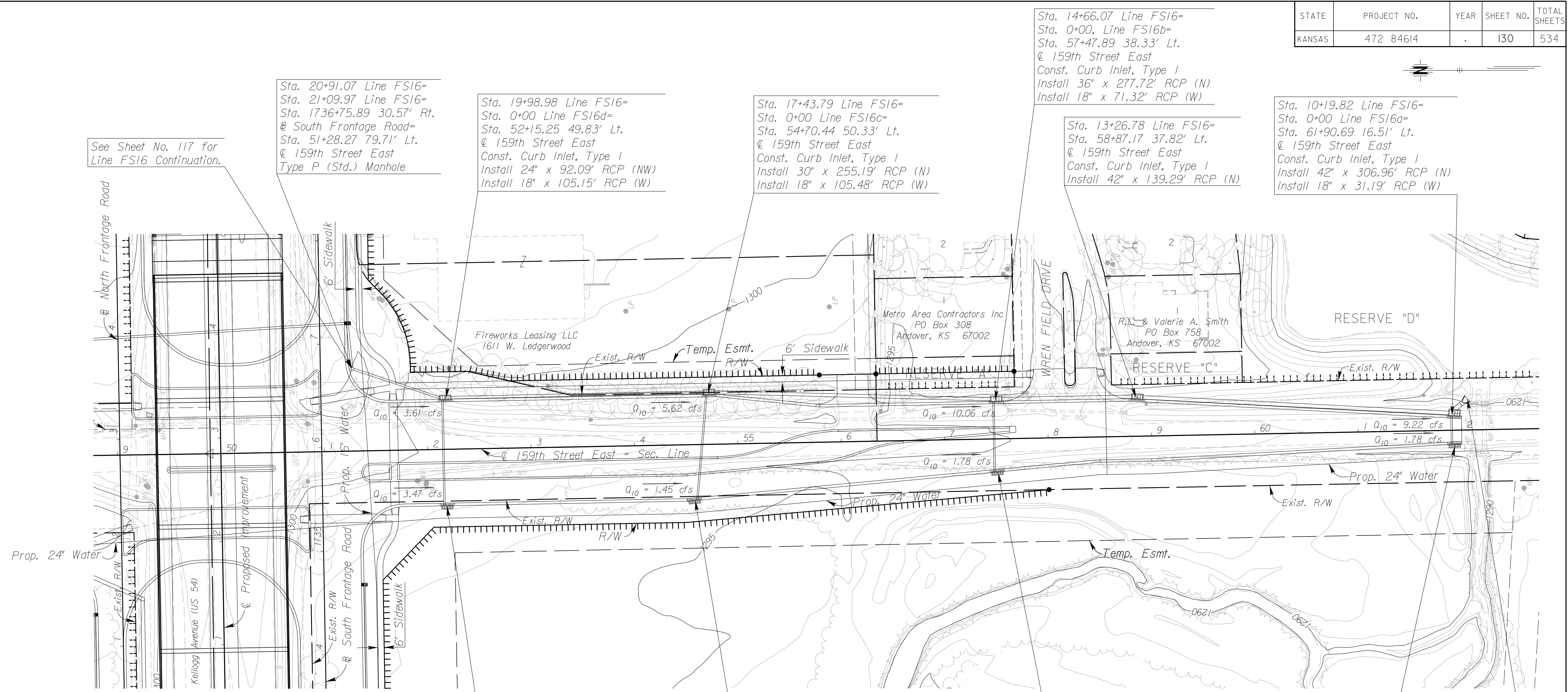
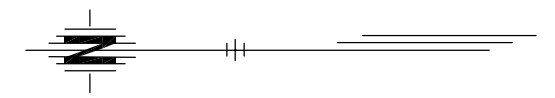


STATE	PROJECT NO.	YEAR	SHEET NO.	TOTAL SHEETS
KANSAS	472 84614	.	130	534



Sta. 20+91.07 Line FS16=
Sta. 21+09.97 Line FS16=
Sta. 1736+75.89 30.57' Rt.
@ South Frontage Road=
Sta. 51+28.27 79.71' Lt.
@ 159th Street East
Type P (Std.) Manhole

Sta. 19+98.98 Line FS16=
Sta. 0+00 Line FS16d=
Sta. 52+15.25 49.83' Lt.
@ 159th Street East
Const. Curb Inlet, Type I
Install 24" x 92.09' RCP (NW)
Install 18" x 105.15' RCP (W)

Sta. 17+43.79 Line FS16=
Sta. 0+00 Line FS16c=
Sta. 54+70.44 50.33' Lt.
@ 159th Street East
Const. Curb Inlet, Type I
Install 30" x 255.19' RCP (N)
Install 18" x 105.48' RCP (W)

Sta. 14+66.07 Line FS16=
Sta. 0+00, Line FS16b=
Sta. 57+47.89 38.33' Lt.
@ 159th Street East
Const. Curb Inlet, Type I
Install 36" x 277.72' RCP (N)
Install 18" x 71.32' RCP (W)

Sta. 13+26.78 Line FS16=
Sta. 58+87.17 37.82' Lt.
@ 159th Street East
Const. Curb Inlet, Type I
Install 42" x 139.29' RCP (N)

Sta. 10+19.82 Line FS16=
Sta. 0+00 Line FS16a=
Sta. 61+90.69 16.51' Lt.
@ 159th Street East
Const. Curb Inlet, Type I
Install 42" x 306.96' RCP (N)
Install 18" x 31.19' RCP (W)

Sta. 1+05.15 Line FS16d=
Sta. 52+15.25 55.32' Rt.
@ 159th Street East
Const. Curb Inlet, Type I

Sta. 1+05.48 Line FS16c=
Sta. 54+59.90 54.59' Rt.
@ 159th Street East
Const. Curb Inlet, Type I

Sta. 0+71.32 Line FS16b=
Sta. 57+47.87 32.99' Rt.
@ 159th Street East
Const. Curb Inlet, Type I

Sta. 0+31.19 Line FS16a=
Sta. 61+90.45 14.68' Rt.
@ 159th Street East
Const. Curb Inlet, Type I

Sta. 10+00 Line FS16=
Sta. 62+06.13
@ 159th Street East
Install 48" x 19.82' RCP (NW)
with 48" End Section

STORM WATER SEWER		
DESCRIPTION	UNIT	QUANTITY
Headwall RC 18"	Each	6
Headwall RC 24"	Each	1
Headwall RC 30"	Each	5
Headwall RC 42"	Each	2
Headwall RC 48"	Each	1
Headwall RC 60"	Each	1
Pipe, RCP (18")	LF	26062
Pipe, RCP (24")	LF	5129
Pipe, RCP (30")	LF	4722
Pipe, RCP (36")	LF	4192
Pipe, RCP (42")	LF	2597
Pipe, RCP (48")	LF	2132
Pipe, RCP (54")	LF	615
Pipe, RCP (60")	LF	1016
Inlet, Area	Each	3
Inlet, Curb (Type 1) (L=10')	Each	28
Inlet, Curb (Type 12)	Each	122
Inlet, Drive	Each	1
Inlet, Grate	Each	176
Inlet, Grate Stack	Each	1
MH, Reinforced Concrete	Each	5
MH Stack (5')	Each	9
MH, Type P	Each	97

UTILITIES

- Cable: Cox Communications
- Gas: Kansas Gas Service
- Power: Westar
- Sanitary Sewer: Wichita Water & Sewer
- Storm Water Sewer: Wichita Water & Sewer
- Telephone: AT&T
- Traffic Signal: City of Wichita
- Water: Wichita Water & Sewer

$Q_{10} = x.xx$ cfs - DESIGN YEAR FLOW PER INLET
See Sh. No's. 136-139 for San. Sewer Plans.
See Sh. No's. 140-162 for Water Plans.

CITY OF WICHITA
159TH STREET EAST
STORM WATER SEWER PLAN
STA. 50+00 TO STA. 62+00

2:45 PM
 2/18/2011
 J:\CIVIL\07432\DWG\SWSEK2ML PLAN\K259SWPL02.DWG
 SURV. - PLOT CADD DES. - DR. - TR. - APP. - CKD.