

STATE	PROJECT NO.	YEAR	SHEET NO.	TOTAL SHEETS
KANSAS	472 84614	.	137	534

MH
2-1
N
E

Sta. 10+00 Line 2=
Sta. 2684+40.42 18.00' Lt.
North Frontage Road
Const. Manhole (San.) 4' Dia. Type P (Std.)
Over Exist. 8" San. Sewer
Install 8" x 296.47' San. Sewer (E).
See Sheet Nos.

MH
2-2
N
E

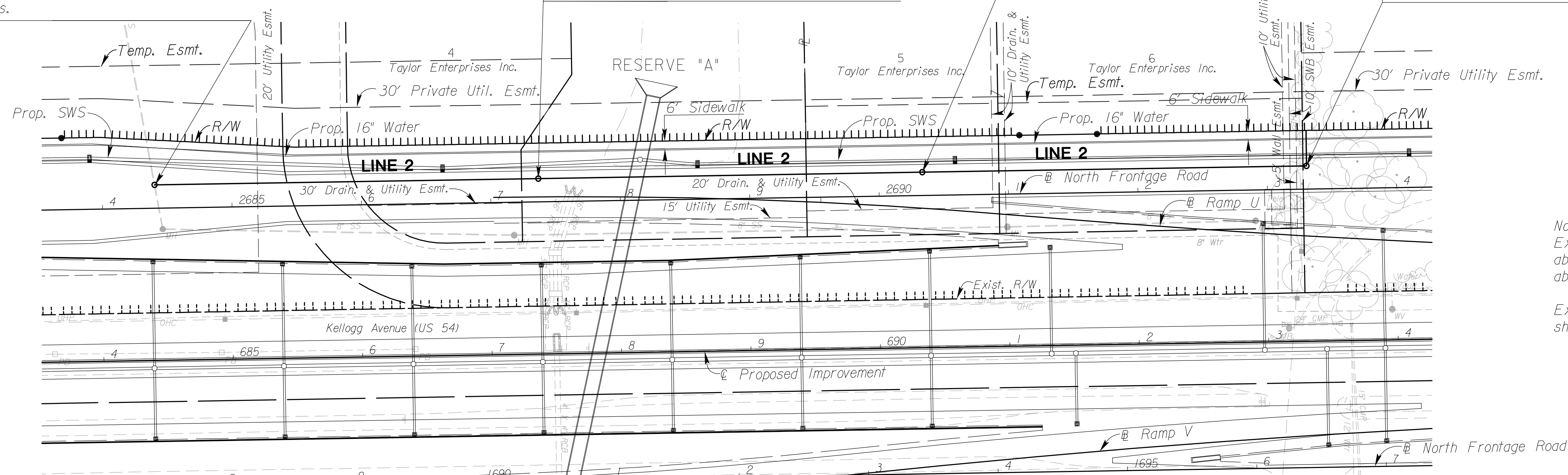
Sta. 12+96.47 Line 2=
Sta. 2687+36.90 18.00' Lt.
North Frontage Road
Const. Manhole (San.) 4' Dia. Type P (Std.)
Install 8" x 296.82' San. Sewer (E).
See Sheet Nos.

MH
2-3
N
E

Sta. 15+93.29 Line 2=
Sta. 2690+33.72 18.00' Lt.
North Frontage Road
Const. Manhole (San.) 4' Dia. Type P (Std.)
Install 8" x 296.82' San. Sewer (E).
See Sheet Nos.

MH
2-4
N
E

Sta. 18+90.11 Line 2=
Sta. 2693+30.54 18.00' Lt.
North Frontage Road
Const. Manhole (San.) 4' Dia. Type P (Std.)
Install 8" Stub x 27.40' San. Sewer (N) w/ Cap
See Sheet Nos.

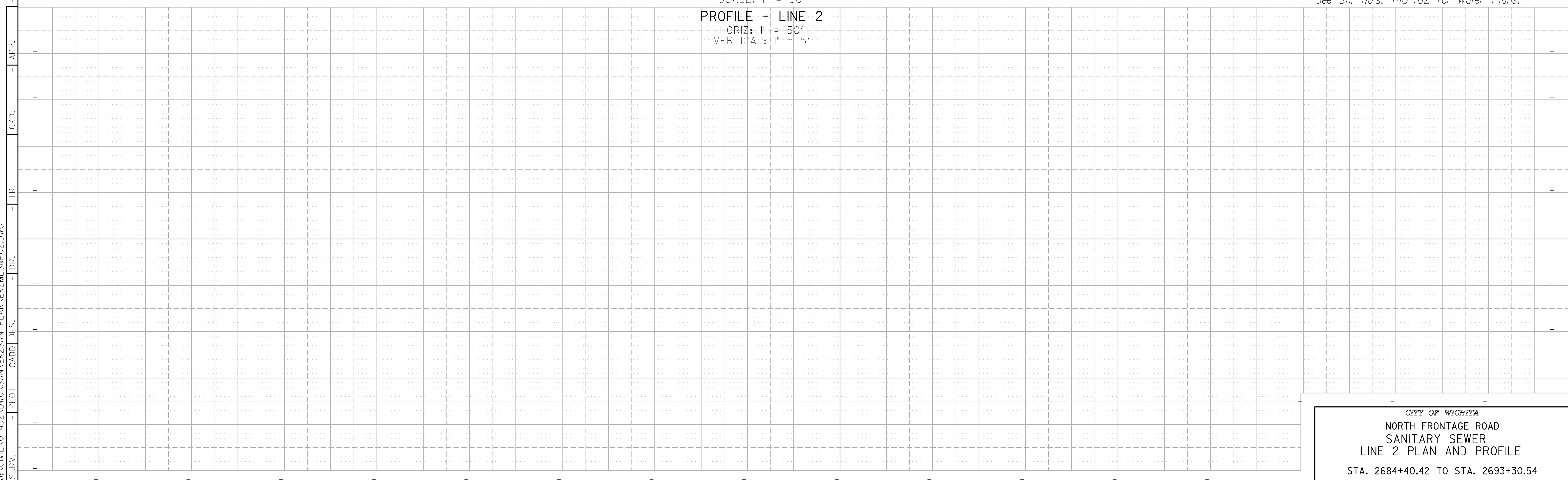


PLAN - LINE 2
SCALE: 1" = 50'
PROFILE - LINE 2
HORIZ: 1" = 50'
VERTICAL: 1" = 5'

Notes:
Existing lines not remaining in service shall be abandoned in place or removed. All open ends of abandoned pipe shall be plugged. See Sh. No.

Existing manholes over abandoned sanitary sewer shall be removed. See Sh. No.

See Sh. No's. 102-130 for SWS Plans.
See Sh. No's. 140-162 for Water Plans.



CITY OF WICHITA
NORTH FRONTAGE ROAD
SANITARY SEWER
LINE 2 PLAN AND PROFILE
STA. 2684+40.42 TO STA. 2693+30.54

2:45 PM
 2/18/2011
 J:\CIVIL\07432\DWG\SAN\K2SAN_PLAN\K2M\SNP02.DWG
 SURV. PLOT CADD DES. DR. TR. CKD. APP.