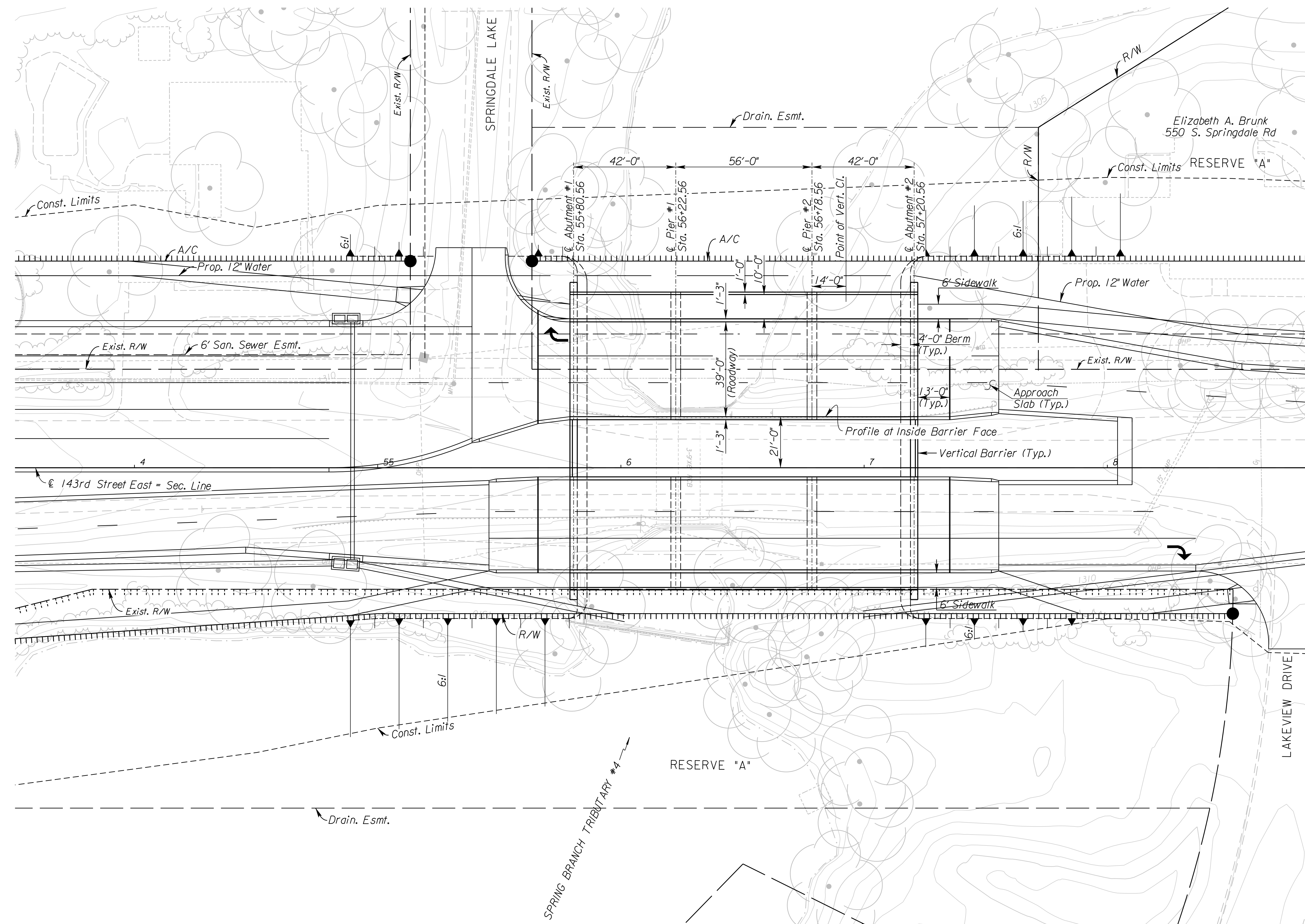
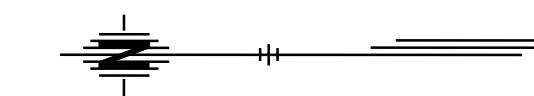
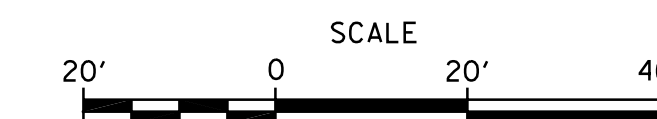


STATE	PROJECT NO.	YEAR	SHEET NO.	TOTAL SHEETS
KANSAS	472 84614	.	212	534



DRAINAGE DATA

* Drainage Area	3.3 Sq. Mi.
Design Frequency	50 Years
* Design Discharge (Q_{100})	3,060 cfs
Design High Water Elevation	1308.18 Ft.
Design Backwater	-2.63 Ft.
Design Backwater Elevation	1308.78 Ft.
Overtopping Elevation (Sta. N/A)	N/A Ft.
Overtopping Discharge	N/A cfs
Overtopping Frequency	>500 Years
* Discharge at Q_{100}	3,813 cfs
Backwater at Q_{100}	-2.39 Ft.
Backwater Elevation at Q_{100}	1308.71 Ft.
Historic High Water Elevation	1306.30 Ft.
Ordinary High Water Elevation	1306 Ft.
Total Waterway Provided	568 Sq. Ft.
Design Waterway Provided	418 Sq. Ft.
100 Yr. Floodplain Elev. (FEMA)	
Average Velocity at Q_{des}	5.9 fps
Average Velocity at Q_{100}	6.8 fps

* Drainage Area for Spring Branch Tributary #4
 ** Discharge is controlled and published by FEMA

CITY OF WICHITA
 NB 143RD STREET OVER
 SPRING BRANCH TRIBUTARY #4
 CONSTRUCTION LAYOUT I

BR. NO.

STA. 56+50.56

PLAN

11/9/23 AM
 2/21/2011
 T:\35166A\Cadd\Sheets\Structures\Bridges\143S\NB\EK24\NBCL\01.dgn
 SURV. PLOT CADD DES. DR. TR. CKD. APP.