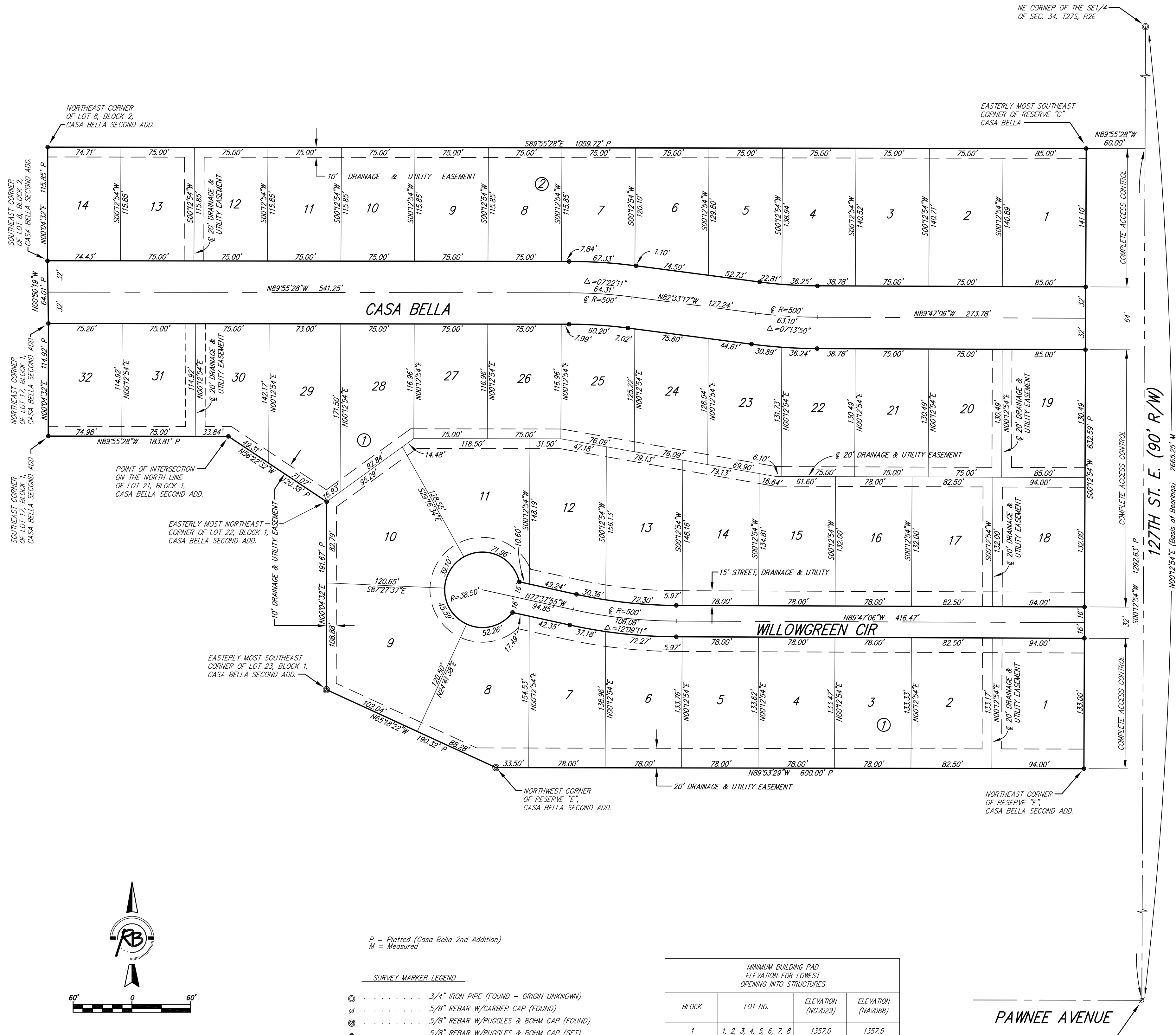


CASA BELLA THIRD ADDITION

Wichita, Sedgwick County, Kansas



State of Kansas)
SS Sedgwick County)

We, Ruggles & Bohm, P.A., Land Surveyors in aforesaid county and state, do hereby certify that, under the supervision of the undersigned, we have surveyed and platted "CASA BELLA THIRD ADDITION", Wichita, Sedgwick County, Kansas, and that the accompanying plat is a true and correct exhibit of the property surveyed, described as follows:

A replat of Lots 2 through 16 inclusive, Block 1 and Lots 9 through 34 inclusive, Block 2, Casa Bella Second Addition, Wichita, Sedgwick County, Kansas, AND the streets adjacent thereto, more particularly described as beginning at the easterly most southeast corner of Reserve "C", Casa Bella, Wichita, Sedgwick County, Kansas; thence S00°12'54"W, parallel with the east line of the SE1/4 of Sec. 34, T27S, R2E of the 6th P.M., 632.59 feet to the northeast corner of Reserve "E", in said Casa Bella Second Addition; thence N89°53'29"W along the north line of said Reserve "E", 600.00 feet to the northwest corner of said Reserve "E"; thence N65°18'22"W along the northeast line of Lot 6, Block 4, in said Casa Bella, and extended, 190.32 feet to the easterly most southeast corner of Lot 23, Block 1, in said Casa Bella Second Addition; thence N00°04'32"E along the east line of said Lot 23 and extended, 191.67 feet to the easterly most northeast corner of Lot 22, Block 1, in said Casa Bella Second Addition; thence N56°22'32"W along the northeast line of said Lot 22, and extended, 120.38 feet to a point of intersection on the north line of Lot 21, Block 1, in said Casa Bella Second Addition; thence N89°55'28"W along the north line of said Lot 21, and extended, 183.81 feet to the southeast corner of Lot 17, Block 1, in said Casa Bella Second Addition; thence N00°04'32"E along the east line of said Lot 17, 114.92 feet to the northeast corner of said Lot 17; thence N00°50'19"W, 64.01 feet to the southeast corner of Lot 8, Block 2, in said Casa Bella Second Addition; thence N00°04'32"E along the east line of said Lot 8, 115.85 feet to the northeast corner of said Lot 8, also being the south line of said Reserve "C"; thence S89°55'28"E along the south line of said Reserve "C", 1059.72 feet to the place of beginning.

All public easements and dedications are hereby vacated by virtue of K.S.A. 12-512(b).

Ruggles & Bohm, P.A.

William K. Clevenger

Know all men by these presents that we, the undersigned, have caused the land described in the surveyor's certificate to be platted into Lots, Blocks and Streets, to be known as "CASA BELLA THIRD ADDITION", Wichita, Sedgwick County, Kansas. The utility easements are hereby granted for the construction and maintenance of all public utilities. The drainage easements are hereby granted to the public as indicated for drainage purposes. The street, drainage & utility easements are hereby granted to the public as indicated for street improvements, public utilities and drainage purposes. Access Controls as indicated are hereby granted to the appropriate governing body. The streets are hereby dedicated to and for the use of the public. A drainage plan has been developed for this plat and all drainage easements shall remain at established grades, or as modified with the approval of the City Engineer, and unobstructed to allow for the conveyance of storm water.

Tara Development Inc.

Eugene Vitarelli

State of Kansas)
SS Sedgwick County)

The foregoing instrument acknowledged before me, this _____ day of _____, 2010, by Eugene Vitarelli, President, on behalf of Tara Development Inc.

_____, Notary Public

My appointment expires _____.

We the undersigned, holders of a mortgage on a portion of the above described property, do hereby consent to this plat of "CASA BELLA THIRD ADDITION", Wichita, Sedgwick County, Kansas.

Commerce Bank, N.A.
Senior Vice President

Collin Stieben

State of Kansas)
SS Sedgwick County)

The foregoing instrument acknowledged before me this _____ day of _____, 2010, by Collin Stieben, Senior Vice President of Commerce Bank, N.A., on behalf of the Bank.

_____, Notary Public

My appointment expires _____.

This plat of "CASA BELLA THIRD ADDITION", Wichita, Sedgwick County, Kansas, has been submitted to and approved by the Wichita-Sedgwick County Metropolitan Area Planning Commission, Wichita, Kansas.

Dated this _____ day of _____, 2010.

Wichita-Sedgwick County Metropolitan Area Planning Commission

Debra Miller Stevens

John L. Schlegel

This plat approved and all dedications shown hereon accepted by the City Council of the City of Wichita, Kansas, this _____ day of _____, 2010.

At the Direction of the City Council

Carl Brewer

Karen Sublett

Reviewed in accordance with K.S.A. 58-2005 on this _____ day of _____, 2010.

Deputy County Surveyor
Sedgwick County Kansas

Tricia L. Robello, LS #1246

Entered on transfer record this _____ day of _____, 2010.

County Clerk

Kelly B. Arnold

State of Kansas)
SS Sedgwick County)

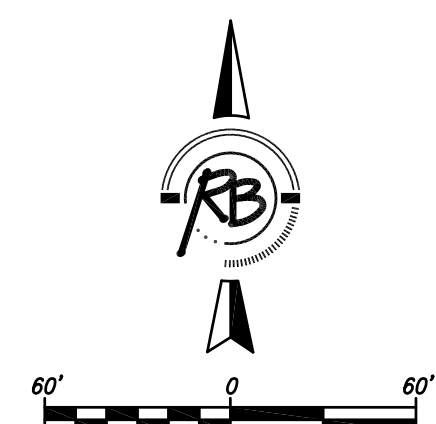
This is to certify that this plat has been filed for record in the office of the Register of Deeds, this _____ day of _____, 2010, at _____ o'clock _____ M, and is duly recorded.

Register of Deeds

Bill Meek

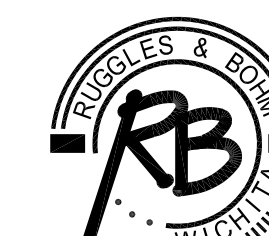
Deputy

Tonya Buckingham



BENCH MARK: SRB BRASS DISC 55.45' E. & 5.13' S. OF THE N.W. COR., SW1/4, SEC. 35, T27S, R2E
ELEVATION = 1348.35 (NGVD29)
= 1348.83 (NAVD88)

DWG FILE: SURVEY BASE
PROJECT NO. 3655P
OCTOBER 20, 2010



Ruggles & Bohm, P.A.
Engineering, Surveying, Land Planning
924 North Main (316) 264-8008
Wichita, Kansas 67203 (316) 264-4621 fax
www.rbkans.com E-mail: info@rbkans.com