

SANITARY SEWER LINE PLANS (PUBLIC)

TO SERVE



MARKET STORE #5855-00

CENTRAL AVENUE & MAIZE ROAD
WICHITA, SEDGWICK COUNTY, KANSAS
CITY OF WICHITA PRIVATE PROJECT NO.

2098PPS (607861)

2010

AS BUILT PLANS

Contractor: Mies
Inspector: Don Eddingfield, Baughman Co.
pdf's by: KEK, 3/21/11

OWNERS' ADDRESS

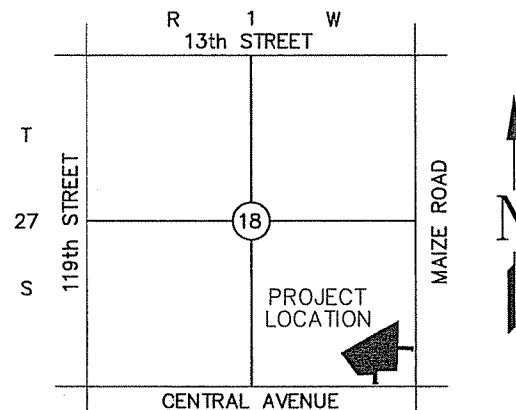
WALMART STORES, INC.
702 S.W. 8th STREET
BENTONVILLE, AR 72716
PH. (479) 273-4000

Stub
Release Date: 3/23/2011
: APROsas

SANITARY SEWER	-PROVIDE AND INSTALL SANITARY SEWER LINES AND ASSOCIATED APPURTENANCES PER THE PLANS AND SPECIFICATIONS. -ALL PUBLIC AND PRIVATE SANITARY SEWER LINES SHALL BE PVC (4" AND 6" SHALL BE SCH 40, 8" SHALL BE SCH 35). -COORDINATE REQUIRED INSPECTION SERVICES WITH ENGINEER OF RECORD AND CITY OF WICHITA. SEE UTILITY PLAN FOR REQUIREMENTS. -ANY RELOCATION OR MODIFICATIONS OF EXISTING SANITARY SEWER LINES WILL BE DONE BY CONTRACTOR WITH PRIOR APPROVAL BY THE WALMART CONSTRUCTION MANAGER AND THE CITY OF WICHITA.
PUBLIC WORKS CITY OF WICHITA 455 N. MAIN - CITY HALL WICHITA, KANSAS 67202 CONTACT: STEVE KING PH: (316) 268-4288 FAX: (316) 268-4114	

CITY RESOURCE LIST

CITY MANAGER CITY MANAGER'S OFFICE CITY OF WICHITA 455 N. MAIN - CITY HALL WICHITA, KS 67202 CONTACT: ROBERT LAYTON PH: (316) 268-4351 FAX: (316) 858-7712	CITY ENGINEER PUBLIC WORKS CITY OF WICHITA 455 N. MAIN - CITY HALL WICHITA, KS 67202 CONTACT: JIM ARMOUR PH: (316) 268-4266 FAX: (316) 268-4114	PLANNING / ZONING METROPOLITAN AREA PLANNING DEPARTMENT CITY OF WICHITA 455 N. MAIN - CITY HALL WICHITA, KANSAS 67202 CONTACT: BILL LONGNECKER PH: (316) 268-4494 FAX: (316) 268-4390
--	---	---



LOCATION MAP
NOT TO SCALE

- (1) An effort has been made to locate and show approximate location of underground utility lines. Buried utilities are not necessarily shown. It is the Contractor's responsibility to locate and preserve all utility services.
- (2) Proposed utility services have been coordinated with the local utility companies. Contractor is responsible for contacting all utility companies prior to construction.
- (3) All quantity estimates shown in this set of plans are the Engineer's estimate and are provided for general information only! The contractor is solely responsible for calculating his/her own quantities!
- (4) Contractor shall acquire Licensing to work in City of Wichita, shall maintain Insurance Verification per Walmart and City's requirements and shall submit necessary bonds to satisfy City of Wichita's requirements.



ALERT TO CONTRACTOR:

1. THE SITEWORK FOR THE WALMART PORTION OF THIS PROJECT SHALL MEET OR EXCEED THE "SITE SPECIFIC SPECIFICATIONS."
2. ALL NECESSARY INSPECTIONS AND/OR CERTIFICATIONS REQUIRED BY CODES AND/OR UTILITY SERVICE COMPANIES SHALL BE PERFORMED PRIOR TO CONTRACT COMPLETION AND THE FINAL CONNECTION OF SERVICES.

SHEET INDEX

- C-11.1 TITLE SHEET
- C-11.1.1 SANITARY SEWER LINE LOCATION PLAN
- C-11.2 SANITARY SEWER LINE "A" PLAN & PROFILE
- C-11.3 STANDARD TYPE 'P' MANHOLES
- C-11.4 STANDARD & LIGHT WEIGHT MANHOLE FRAME & COVER

NOTE TO CONTRACTOR

INSPECTION AND TESTING FOR THIS PROJECT IS TO BE PROVIDED BY A LICENSED CONSULTING ENGINEERING FIRM UNDER CONTRACT WITH THE OWNER/DEVELOPER. SAID INSPECTION TO BE IN ACCORDANCE WITH THE CITY OF WICHITA STANDARD CONSTRUCTION ENGINEERING PRACTICES AND CERTIFIED BY A LICENSED PROFESSIONAL ENGINEER. NO WORK SHALL BE PERFORMED IN DEDICATED EASEMENTS OR THE PUBLIC RIGHT-OF-WAY BY THE CONTRACTOR WITHOUT SUCH INSPECTION NOR SHALL ANY WORK BE COMMENCED IN DEDICATED EASEMENT OR ANY RIGHT-OF-WAY WITHOUT WRITTEN AGREEMENT BY THE CITY ENGINEER.

I, Terence L. Haynes, Kansas Professional Engineer, #14583, do hereby state that these Public sanitary sewer line plans, prepared by me or under my direct, responsible supervision, are in strict conformance with the applicable Codes of the City of Wichita and the sound principles and practice of the Civil Engineering profession

Terence L. Haynes
TERENCE L. HAYNES, P.E. #14583

REVIEWED BY:

CITY ENGINEER

DATE:

BENCH MARKS:

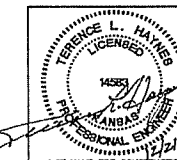
BM #1 "a" CHISELED ON TOP OF CURB ELEV=1329.74	BM #2 "a" CHISELED ON TOP OF CURB ELEV=1343.64
--	--

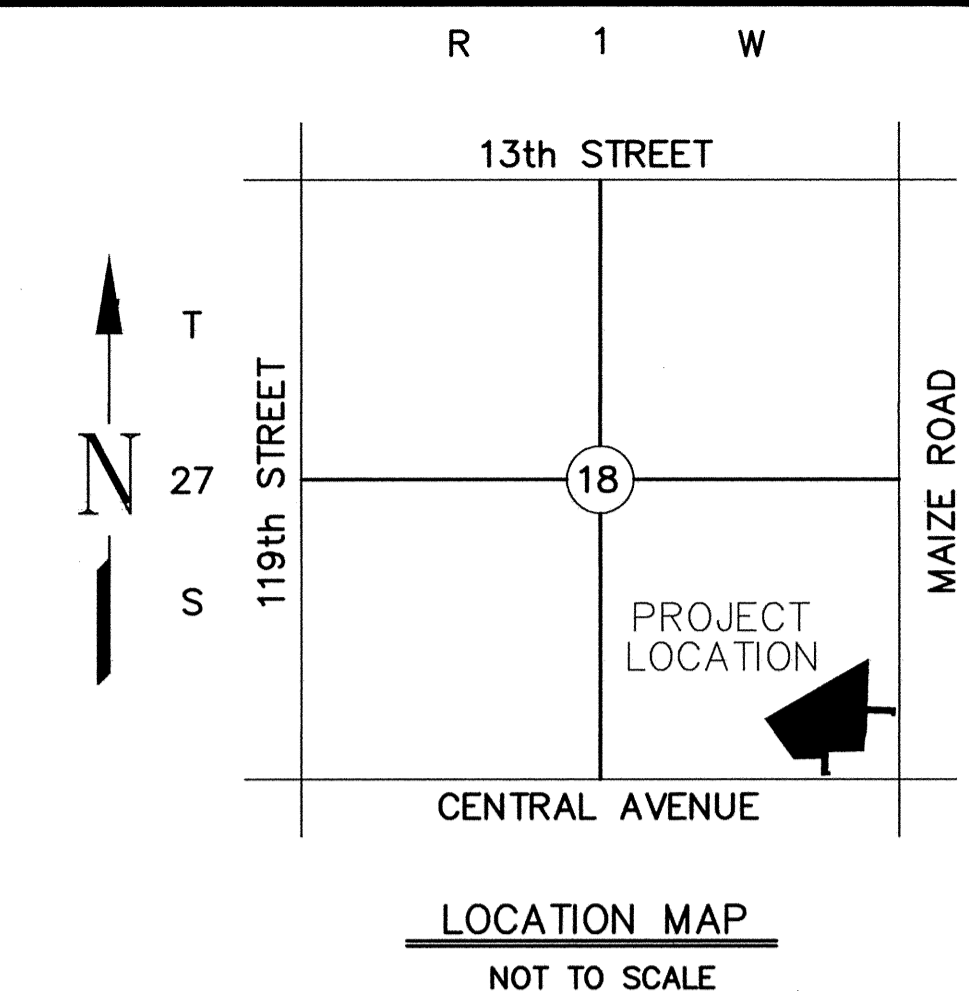
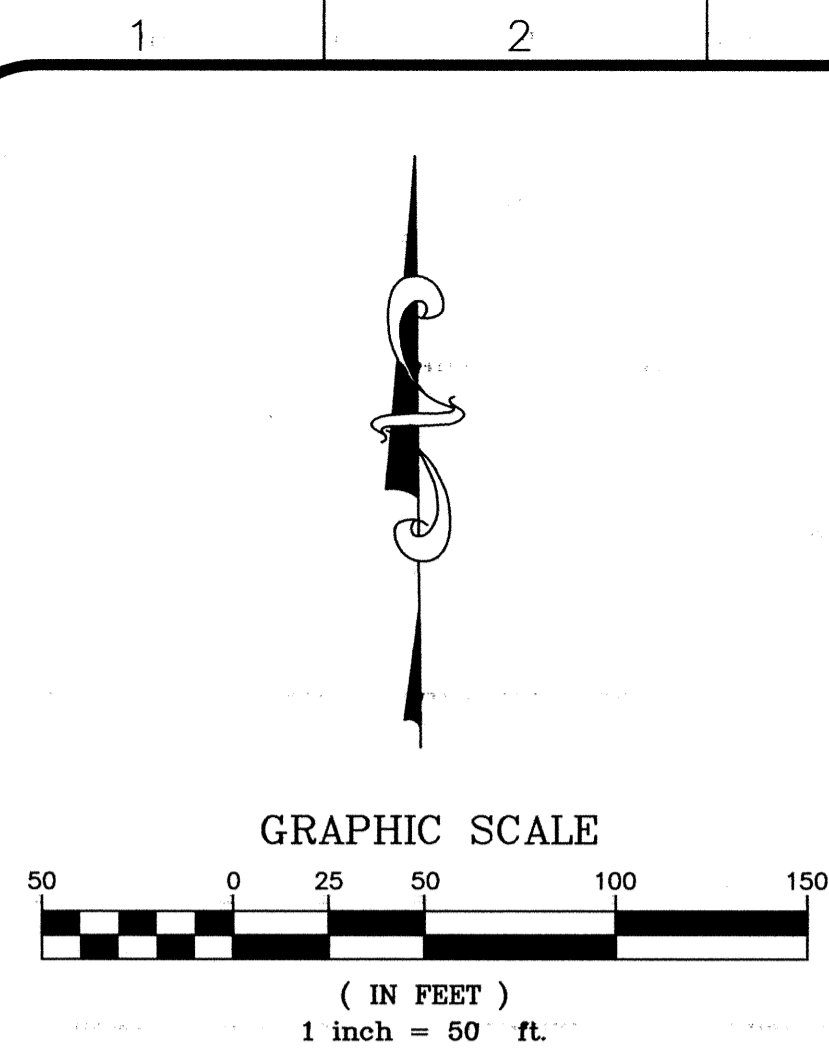
SMC Consulting Engineers, P.C.
Oklahoma City, Oklahoma

TITLE SHEET
PUBLIC SANITARY SEWER LINE PLANS
WALMART
MARKET #5855-00
CENTRAL AVE. & MAIZE RD.
WICHITA, KANSAS

SMC Consulting Engineers, P.C.
815 West Main - Oklahoma City, OK 73106
PH: 405-232-7715 Fax: 405-232-7859
KANSAS CERTIFICATE OF AUTHORIZATION NO. E-335 EXP. DEC. 31, 2008

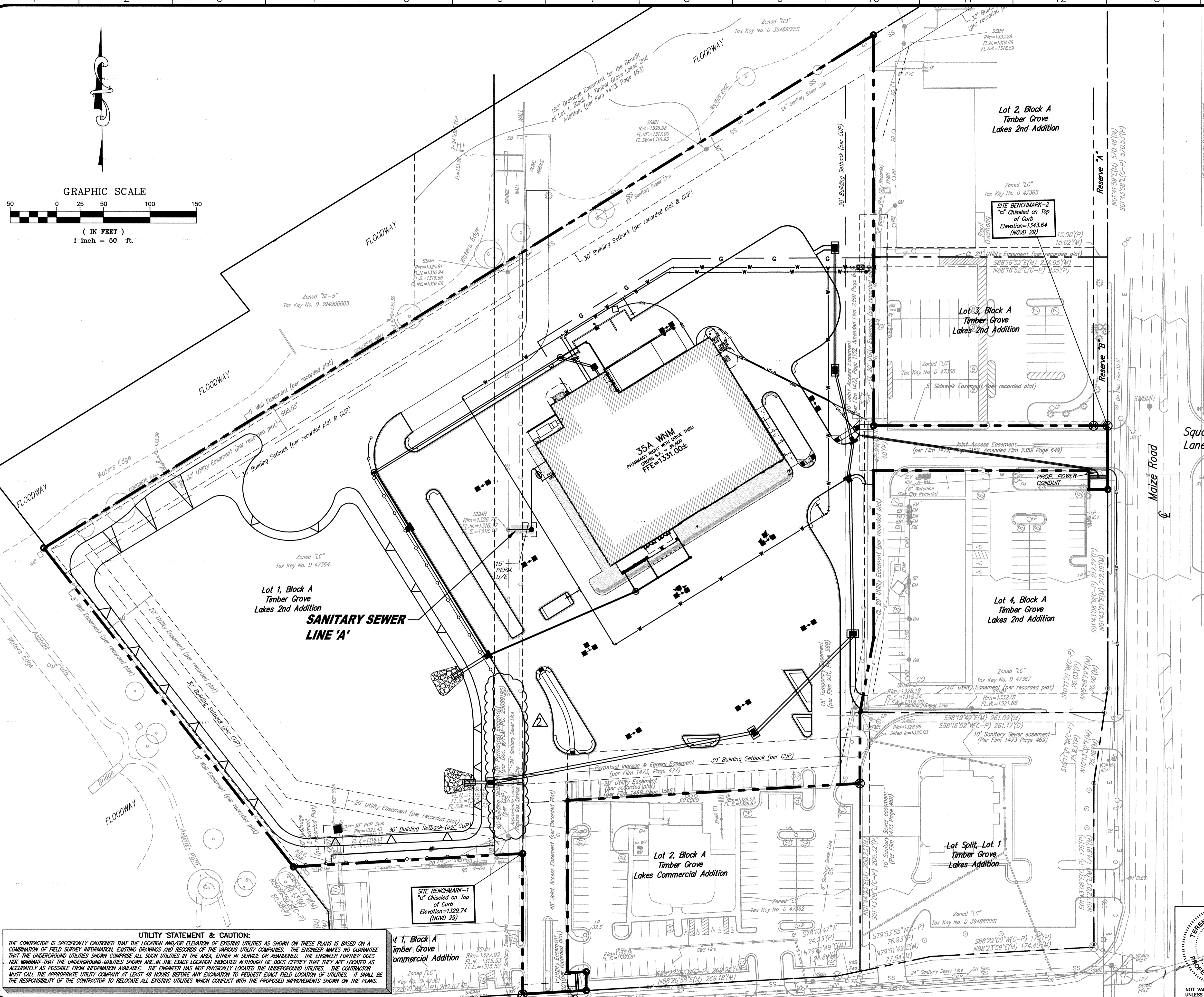
No.	Revision	By	Date
1	3rd Party Peer review & City Comments	MS	10/22/10
2	City Review Comments	MS	12/21/10
DATE: 09/20/10		SCALE: NONE	
DRAWN BY: TAB		SHEET NO. C-11.1	
PROJECT NO: 4348.10			
ENGINEER: TERENCE L. HAYNES, P.E. #14583			





LEGEND

—X—	PROPOSED CONTOUR & CONTOUR ELEVATION
—	STORM SEWER INLET
—	STORM SEWER CURB INLET
—	STORM SEWER MANHOLE (SWS M.H.)
—	S.S. MANHOLE
—	S.S. CLEANOUTS
—E—	POWER UNDERGROUND BY CONTRACTOR
—T—	TELEPHONE UNDERGROUND (PER CITY STDS)
—	POWER OVERHEAD
—	GAS LINE
—	FLOW DIRECTION
—SWS	STORM SEWER
—	WATER LINE
—	3 WAY FIRE HYDRANT
—	W.L. TEE
—	W.L. GATE VALVE (G.V.)
—	W.L. BENDS
—	LANDSCAPE
—	SANITARY SEWER
—	UTILITY EASEMENT
—	UNDERGROUND COLLECTION SYSTEM
—	WATER LINE
—	3 WAY FIRE HYDRANT
—	W.L. TEE
—	W.L. GATE VALVE (G.V.)
—	W.L. BENDS
—	LANDSCAPE
—	SANITARY SEWER



UTILITY STATEMENT & CAUTION:
 THE CONTRACTOR IS SPECIFICALLY CAUTIONED THAT THE LOCATION AND/OR ELEVATION OF EXISTING UTILITIES AS SHOWN ON THESE PLANS IS BASED ON A COMBINATION OF FIELD SURVEY INFORMATION, EXISTING DRAWINGS AND RECORDS OF THE VARIOUS UTILITY COMPANIES. THE ENGINEER MAKES NO GUARANTEE THAT THE UNDERGROUND UTILITIES SHOWN COMPRISE ALL SUCH UTILITIES IN THE AREA, EITHER IN SERVICE OR ABANDONED. THE ENGINEER FURTHER DOES NOT WARRANT THAT THE UNDERGROUND UTILITIES SHOWN ARE IN THE EXACT LOCATION INDICATED ALTHOUGH HE DOES CERTIFY THAT THEY ARE LOCATED AS ACCURATELY AS POSSIBLE FROM INFORMATION AVAILABLE. THE ENGINEER HAS NOT PHYSICALLY LOCATED THE UNDERGROUND UTILITIES. THE CONTRACTOR MUST CALL THE APPROPRIATE UTILITY COMPANY AT LEAST 48 HOURS BEFORE ANY EXCAVATION TO REQUEST EXACT FIELD LOCATION OF UTILITIES. IT SHALL BE THE RESPONSIBILITY OF THE CONTRACTOR TO RELOCATE ALL EXISTING UTILITIES WHICH CONFLICT WITH THE PROPOSED IMPROVEMENTS SHOWN ON THE PLANS.

CHANGE DIRECTIVE #2~01-06-11

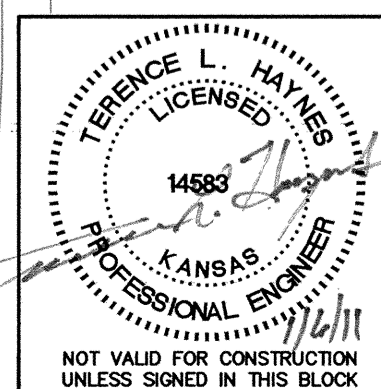
SANITARY SEWER LINE LOCATION PLAN

**WALMART
 MARKET #5855-00
 CENTRAL AVE. & MAIZE RD.
 WICHITA, KANSAS**

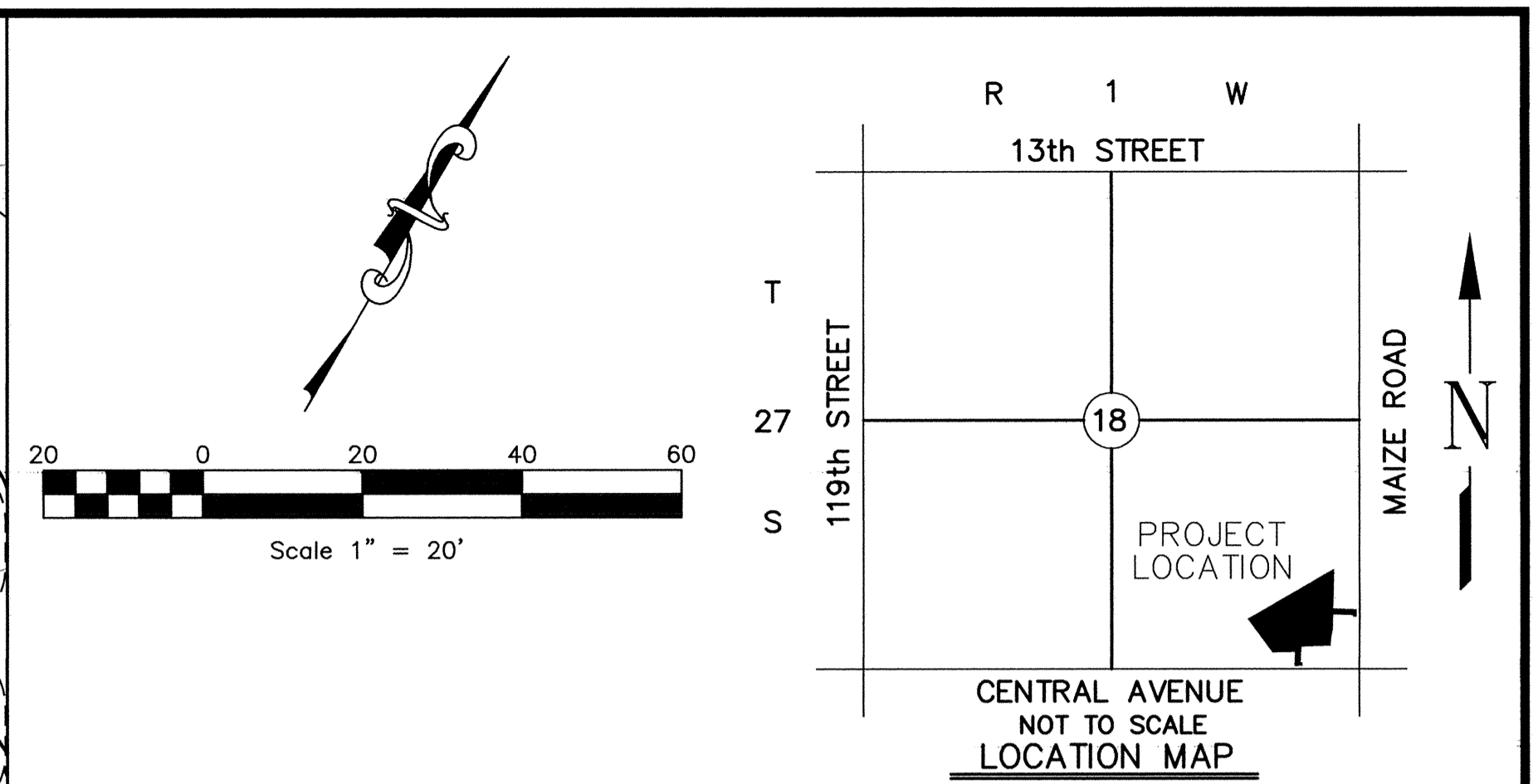
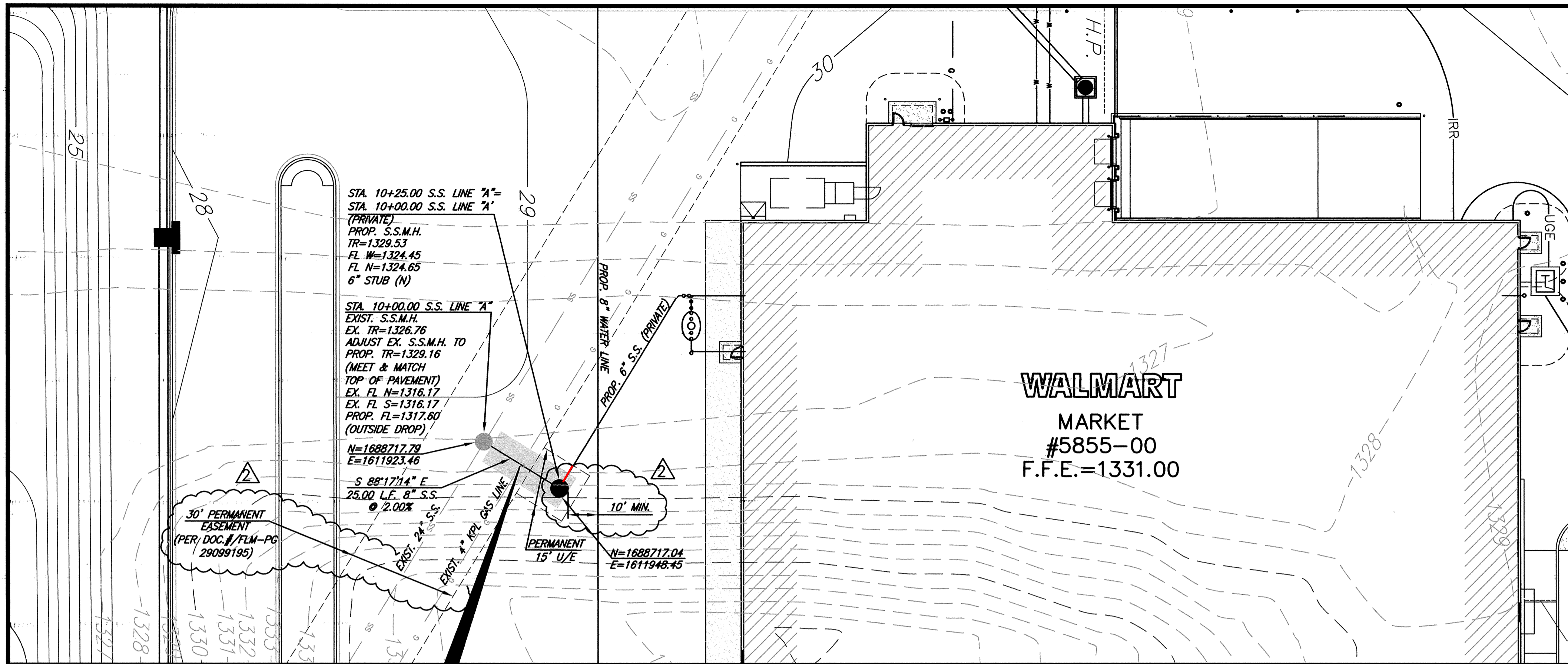
SMC Consulting Engineers, P.C.
 815 West Main - Oklahoma City, OK 73106
 PH: 405-232-7715 Fax: 405-232-7859
 KANSAS CERTIFICATE OF AUTHORIZATION NO. E-335 EXP. DEC. 31, 2010

No.	Revision	By	Date
1	City Review Comments	AST	12/21/10
2	Change Directive #1	AST	12/23/10
3	City Review Comments/SOC #2	MDS	01/26/11

DATE: 12/21/10 SCALE: 1"=50' SHEET NO. C-11.1.1
 DRAWN BY: MDS PROJECT NO.: 4348.10 ENGINEER: TERENCE L. HAYNES, P.E. #14583



G:\3436.10 San Sewer\PubLIC\3436.Location Plan41.dwg, 11/20/11 6:35:39 PM
 G:\3436.10 San Sewer\PubLIC\3436.Location Plan41.dwg, 11/20/11 6:35:39 PM



LEGEND

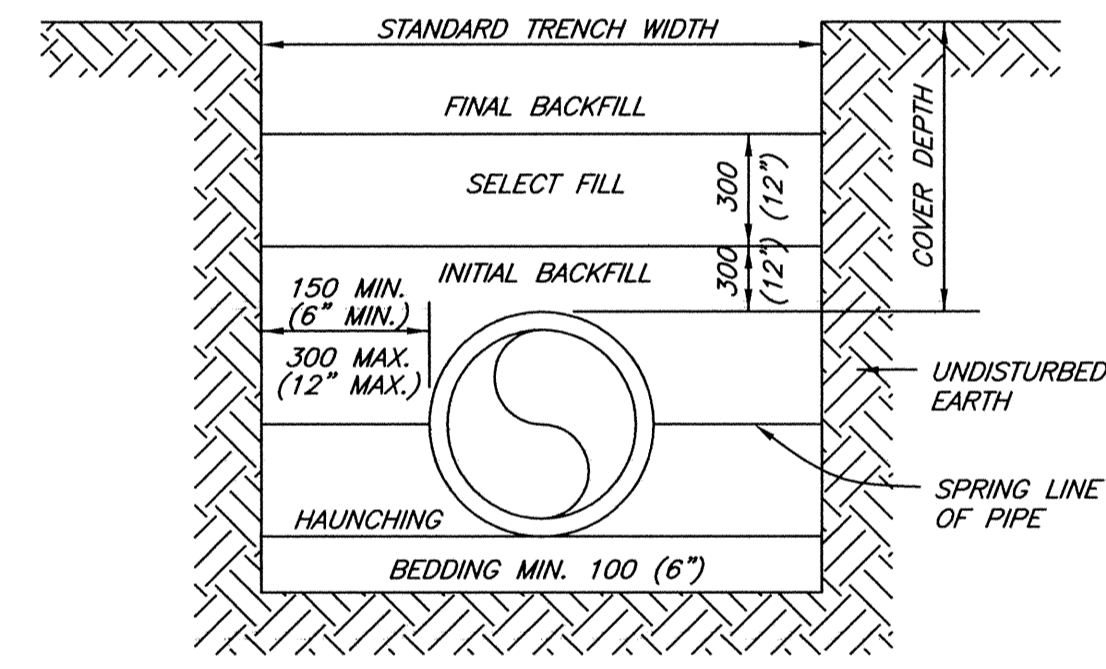
●	SIGN (i.e. STOP, YIELD, etc...)	— 21 —	PROPOSED CONTOUR & CONTOUR ELEVATION
□	LIGHT POLE AND FIXTURE TYPE	■	STORM SEWER INLET
⊕	3 WAY FIRE HYDRANT TEE	■	STORM SEWER CURB INLET
⊕	GATE VALVE	○	STORM SEWER MANHOLE (SWS M.H.)
L.S.	LANDSCAPE	●	S.S. MANHOLE
→	FLOW DIRECTION	●	S.S. CLEANOUTS
— G —	GAS LINE	— UGE —	POWER UNDERGROUND
— SWS —	STORM SEWER	— UTE —	TELEPHONE UNDERGROUND

CAUTION: EXISTING GAS LINE CROSSING IN THIS AREA

NOTE: THE GENERAL CONTRACTOR IS RESPONSIBLE FOR MAKING ALL ADJUSTMENTS OF EXISTING UTILITIES TO ALLOW THE DESIGN TO BE BUILT.

CAUTION - NOTICE TO CONTRACTOR
 THE CONTRACTOR IS SPECIFICALLY CAUTIONED THAT THE LOCATION AND/OR ELEVATION OF EXISTING UTILITIES AS SHOWN ON THESE PLANS IS BASED ON RECORDS OF THE VARIOUS UTILITY COMPANIES AND, WHERE POSSIBLE, MEASUREMENTS TAKEN IN THE FIELD. THE INFORMATION IS NOT TO BE RELIED ON AS BEING EXACT OR COMPLETE. THE CONTRACTOR MUST CALL THE APPROPRIATE UTILITY COMPANY AT LEAST 48 HOURS BEFORE ANY EXCAVATION TO DETERMINE EXACT FIELD LOCATION OF UTILITIES. IT SHALL BE THE RESPONSIBILITY OF THE CONTRACTOR TO RELOCATE ALL EXISTING UTILITIES WHICH CONFLICT WITH THE PROPOSED IMPROVEMENTS SHOWN ON THE PLANS.

PIPE INSIDE DIAMETER		STANDARD TRENCH WIDTH	
MM	IN.	MM	IN.
150	6	450	18
200	8	600	24
250	10	750	30
300	12	750	30
375	15	900	36
450	18	900	36
525	21	1,050	42
600	24	1,050	42
675	27	1,200	48
750	30	1,200	48
900	36	1,350	54
1,050	42	1,500	60
1,200	48	1,650	66



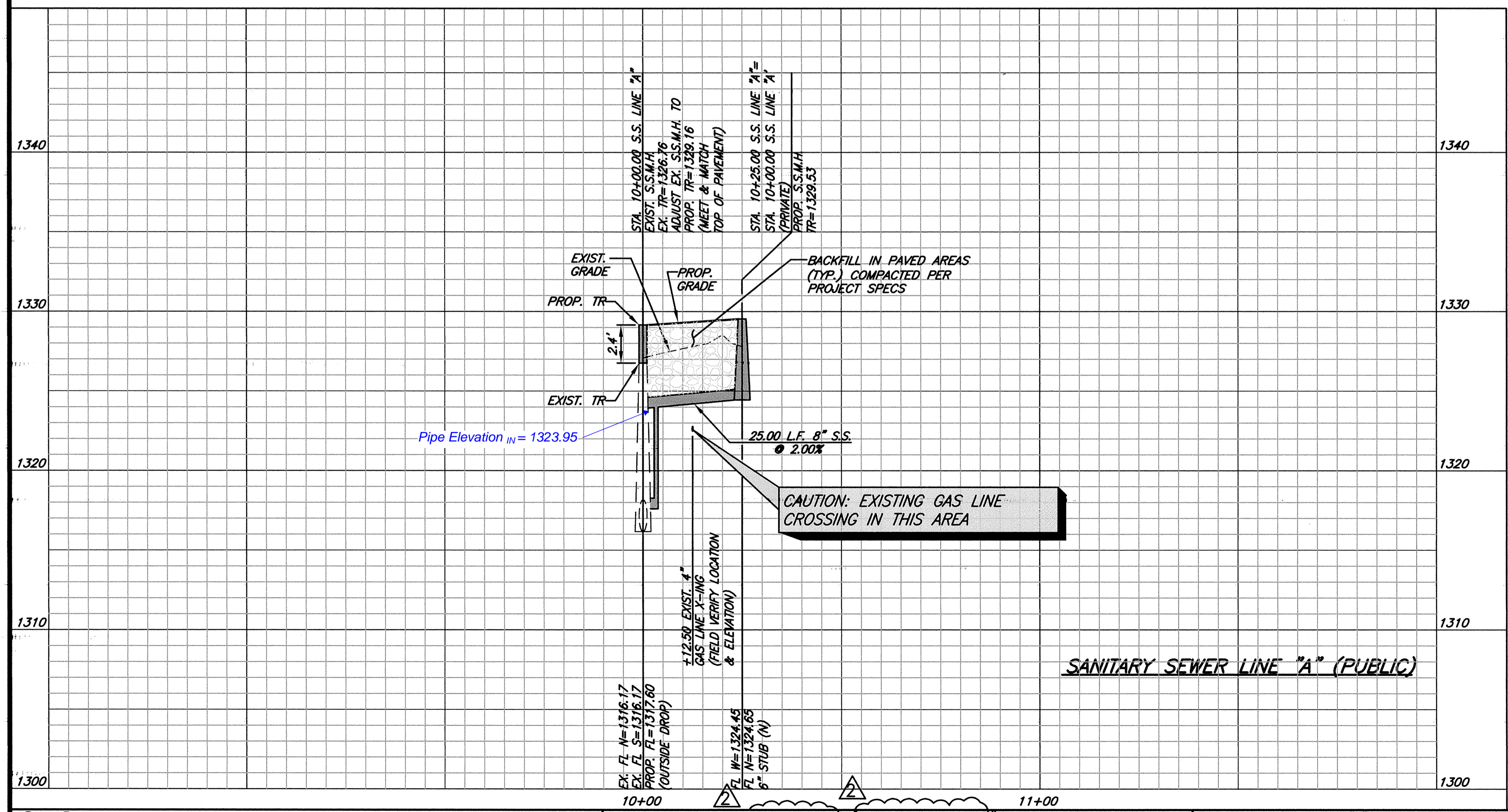
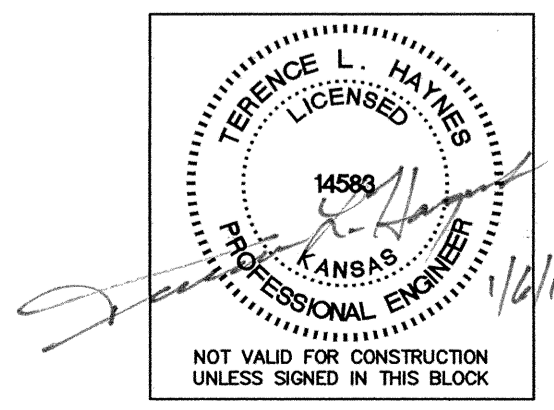
BEDDING MATERIALS

BACKFILL DESCRIPTION	NON-PAVED AREAS			PAVED AREAS (See Note 7)		
	PVC	DUCTILE IRON	H D P E	PVC	DUCTILE IRON	H D P E
FINAL BACKFILL	EXCAVATED MATERIAL	EXCAVATED MATERIAL	EXCAVATED MATERIAL	SBM	SBM	SBM
SELECT BACKFILL	SELECT FILL	SELECT FILL	SELECT FILL	SBM	SBM	SBM
INITIAL BACKFILL	COVER ≤ 10" SAND OR SBM > 10" SBM	SELECT FILL	COVER ≤ 10" SAND OR SBM > 10" SBM	SBM	SBM	SBM
HAUNCHING	COVER ≤ 10" SAND OR SBM > 10" SBM	SELECT FILL	COVER ≤ 10" SAND OR SBM > 10" SBM	SBM	SBM	SBM
BEDDING	See Note 3	See Note 3	See Note 3	See Note 3	See Note 3	See Note 3

- NOTES:**
- INSTALLATION AND BACK FILLING SHALL MEET MANUFACTURERS RECOMMENDATIONS.
 - SELECT FILL CONSISTS OF EXCAVATED MATERIALS CONTAINING NO ROCKS LARGER THAN 50 MM (2").
 - STANDARD BEDDING MATERIAL (SBM) SHALL CONFORM TO KDOT AB-3 AGGREGATE BASE OR FLOWABLE FILL OR APPROVED EQUAL.
 - COMPACTION REQUIREMENTS:
 - NON-PAVED AREAS: 90% MINIMUM STANDARD PROCTOR DENSITY FOR COHESIONLESS SOILS AND 85% FOR COHESIVE SOILS.
 - PAVED AREAS: 95% MINIMUM STANDARD PROCTOR DENSITY FOR COHESIONLESS SOILS.
 - IN SANDY SOIL, CONTRACTOR MAY BACKFILL WITH NATIVE MATERIAL AND USE WARNING TAPE 18" ABOVE PIPE.
 - NO WATER JETTING ALLOWED.
 - THE BACKFILL MATERIAL SHALL EXTEND A MINIMUM OF 2-FEET BEHIND THE BACK OF CURB, OR THE EDGE OF PAVEMENT WHERE NO CURB EXISTS.
- METRIC UNITS ARE IN MM WITH ENGLISH UNITS IN PARENTHESIS, UNLESS INDICATED OTHERWISE.

SANITARY SEWER PIPE TRENCHING AND BEDDING
 NOT TO SCALE

CHANGE DIRECTIVE #2~01-06-11



CAUTION: EXISTING GAS LINE CROSSING IN THIS AREA