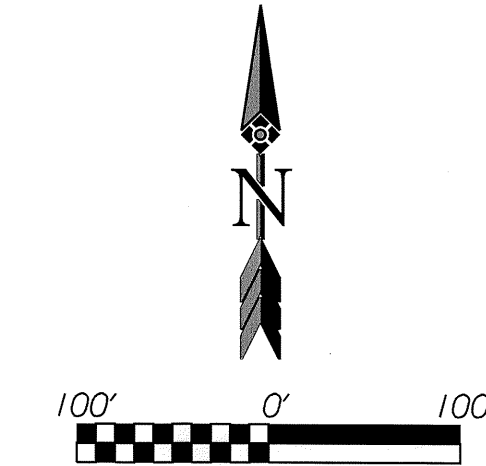
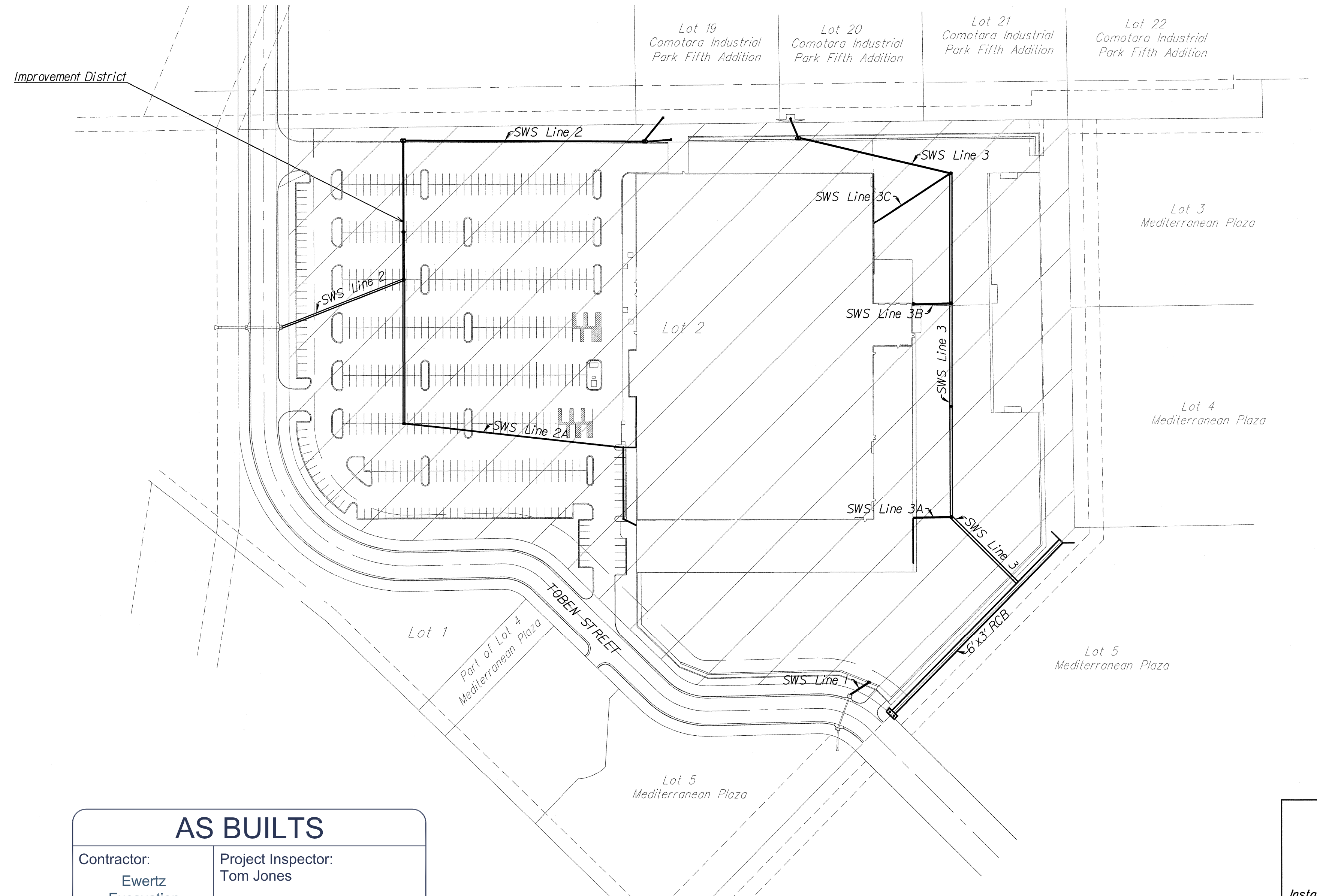
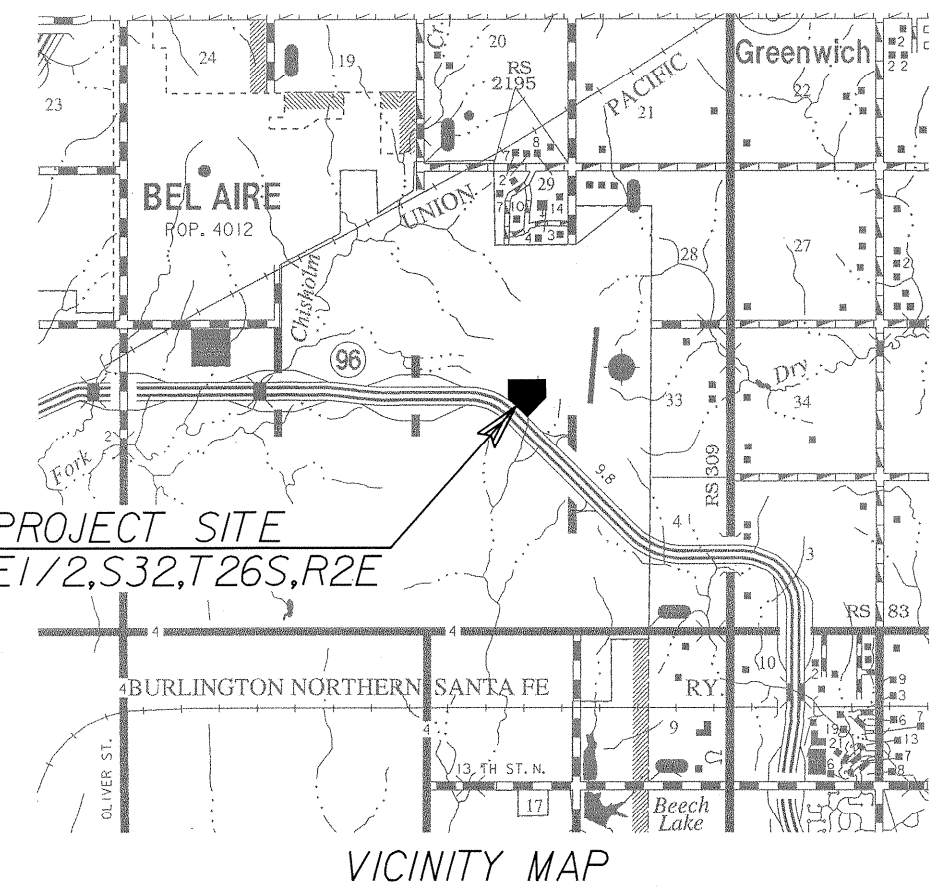


CONSTRUCTION PLANS FOR PRIVATE STORM SEWER IMPROVEMENTS FIREPOINT ADDITION TO THE CITY OF WICHITA, KANSAS JAMES ARMOUR, P.E. – CITY ENGINEER 2042 PPS OCA NO. 607861



SHEET INDEX

TITLE SHEET	SHEET 1
GENERAL NOTES AND POINT LIST	SHEET 2
STORM SEWER PLAN AND PROFILE	SHEETS 3 - 10
STORM SEWER DETAILS	SHEETS 11-14
6' X 3' RCB PLAN AND PROFILE	SHEET 15
SPECIAL INLET DETAIL	SHEETS 16
EROSION CONTROL	SHEET 17
BMP DETAILS	SHEETS 18-22
FINAL PLAT	SHEET 23



AS BUILTS

Contractor: Ewertz Excavation	Project Inspector: Tom Jones
2/17/2011	

APRIL 2010

PE POE & ASSOCIATES OF KANSAS, INC.
CONSULTING ENGINEERS
5940 E. Central, Suite 200 ■ Wichita, KS 67208-4242
Phone 316/685-4114 ■ FAX 316/685-4444

TOTAL LENGTH OF SWS = 2,821.6 LF

APPROVED AS NOTED BY CITY ENGINEER OF WICHITA
Storm Sewer *Julianne Kallman 4-30-10*

NOTE TO CONTRACTORS
Installation, inspection and testing for this project is to be provided by a Licensed Consulting Engineering Firm under contract with the Owner/Developer. Said inspection to be in accordance with the City of Wichita standard construction engineering practices and certified by a Licensed Professional Engineer. No work shall be performed in dedicated easements or or public right-of-way by the Contractor without such inspection nor shall any work be commenced without written authorization by the City Engineer. All Construction and Materials shall comply with the City of Wichita Specifications and Standards (on file and available in the City Engineer's Office).

SHEET 1 OF 23

Ameritrack West, Inc.
12469 SW 15th
Benton, KS 67017
O: 316-778-2215
F: 316-778-1204