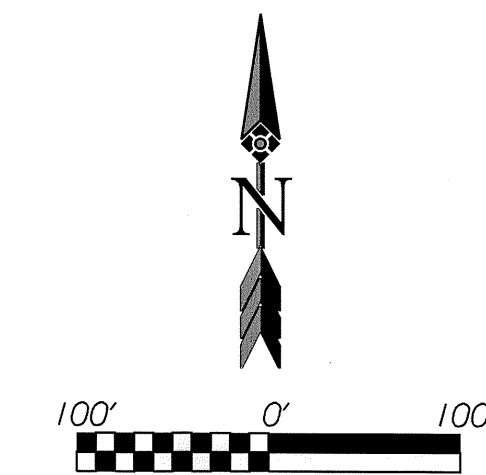
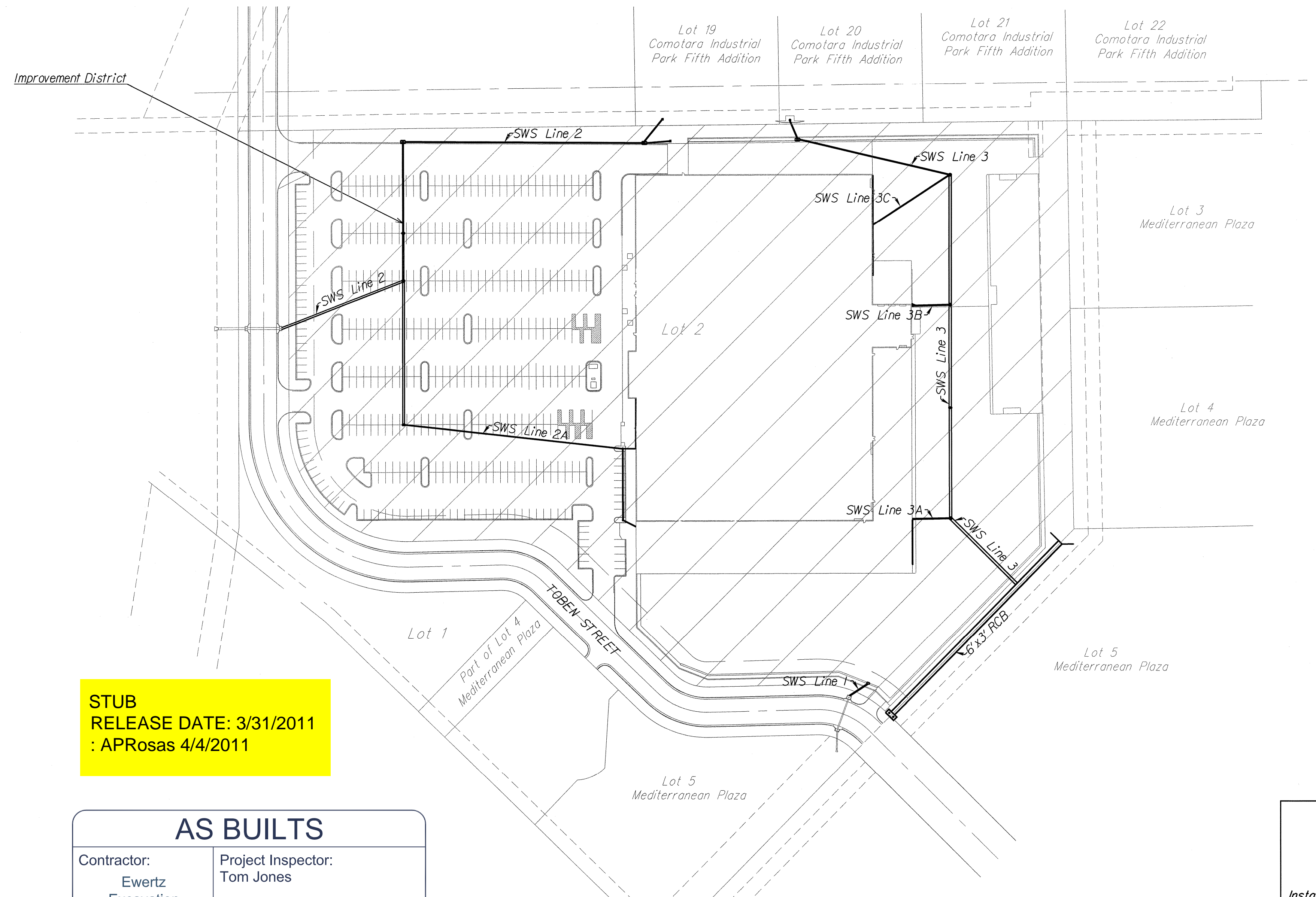


# CONSTRUCTION PLANS FOR PRIVATE STORM SEWER IMPROVEMENTS FIREPOINT ADDITION TO THE CITY OF WICHITA, KANSAS JAMES ARMOUR, P.E. – CITY ENGINEER 2042 PPS OCA NO. 607861



**SHEET INDEX**

TITLE SHEET	SHEET 1
GENERAL NOTES AND POINT LIST	SHEET 2
STORM SEWER PLAN AND PROFILE	SHEETS 3 - 10
STORM SEWER DETAILS	SHEETS 11-14
6' X 3' RCB PLAN AND PROFILE	SHEET 15
SPECIAL INLET DETAIL	SHEETS 16
EROSION CONTROL	SHEET 17
BMP DETAILS	SHEETS 18-22
FINAL PLAT	SHEET 23

**STUB**  
RELEASE DATE: 3/31/2011  
: APRos 4/4/2011

**AS BUILTS**

Contractor: Ewertz Excavation	Project Inspector: Tom Jones
2/17/2011	

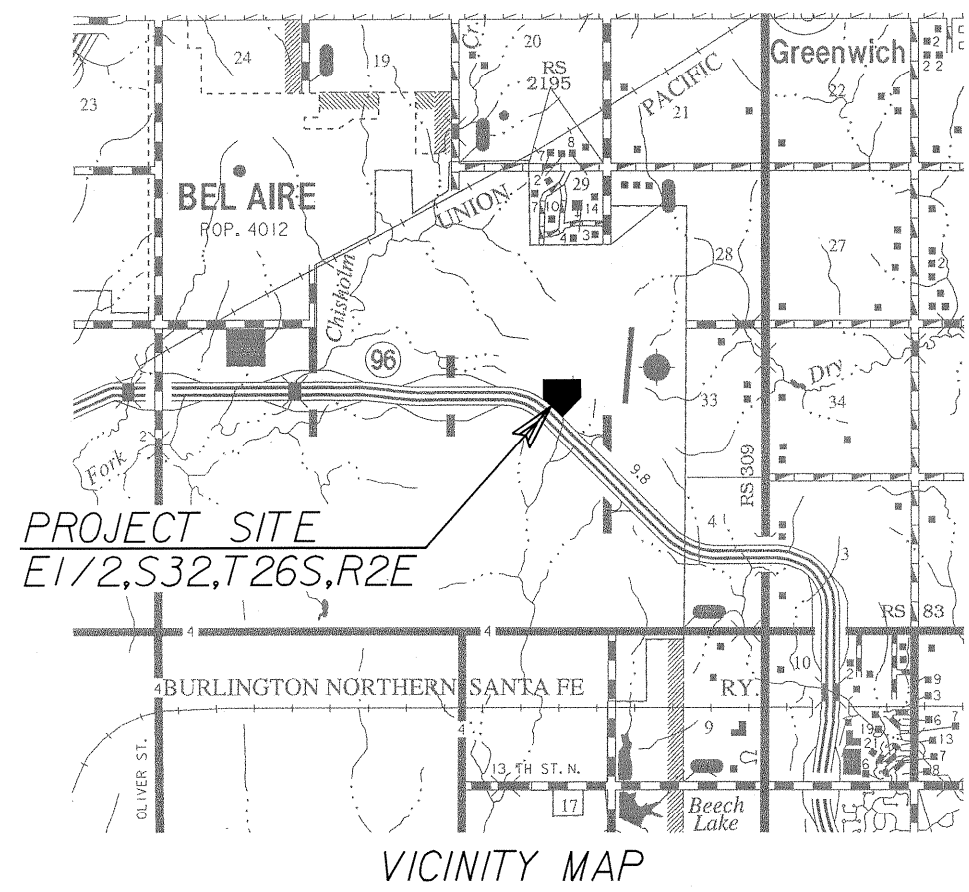
**APRIL 2010**

TOTAL LENGTH OF SWS = 2,821.6 LF

APPROVED AS NOTED BY CITY ENGINEER OF WICHITA

Storm Sewer *Julianne Kallman 4-30-10*

**NOTE TO CONTRACTORS**  
Installation, inspection and testing for this project is to be provided by a Licensed Consulting Engineering Firm under contract with the Owner/Developer. Said inspection to be in accordance with the City of Wichita standard construction engineering practices and certified by a Licensed Professional Engineer. No work shall be performed in dedicated easements or or public right-of-way by the Contractor without such inspection nor shall any work be commenced without written authorization by the City Engineer. All Construction and Materials shall comply with the City of Wichita Specifications and Standards (on file and available in the City Engineer's Office).



**POE & ASSOCIATES OF KANSAS, INC.**  
CONSULTING ENGINEERS  
5940 E. Central, Suite 200 ■ Wichita, KS 67208-4242  
Phone 316/685-4114 ■ FAX 316/685-4444

**Ameritrack WEST**  
Ameritrack West, Inc.  
12469 SW 15th  
Benton, KS 67017  
O: 316-778-2215  
F: 316-778-1204

