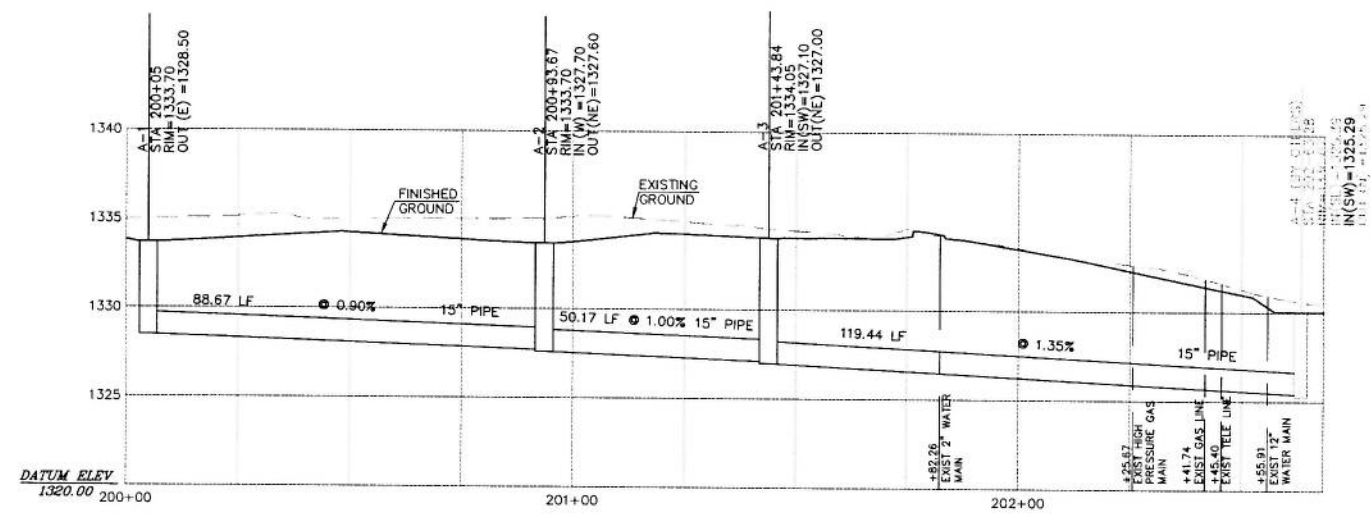


SCALE:
 PLAN: 1"=20'
 PROFILE: 1"=20' HORIZ
 1"=5' VERT



REV	DATE	DESCRIPTION	DSN	DWN	CHK
B	1-19-11	FOR CITY REVIEW			
A	12-13-10	FOR CITY REVIEW			
			KDB		B.H



2319 NORTH JACKSON
 P.O. BOX 1304
 JUNCTION CITY, KANSAS 66441
 785-762-5040 FAX 785-762-7744
 E-MAIL jcb@kveeng.com
 WEB SITE www.kveeng.com



KAW VALLEY ENGINEERING, INC. - CONSULTING ENGINEERS
 Office: Junction City, Mo., Lawrence, Mo., Sedalia, Mo.

BRAUM'S ICE CREAM & DAIRY STORES
1261 S. ROCK ROAD
WICHITA, KANSAS

STORM SEWER - PLAN & PROFILE

PROJ. NO.	A10_5014
DATE	DECEMBER 6, 2010
DESIGNER	KDB
DRAWN BY	B.H
CFN	REV
5014DPP	
SHEET	2 OF 3

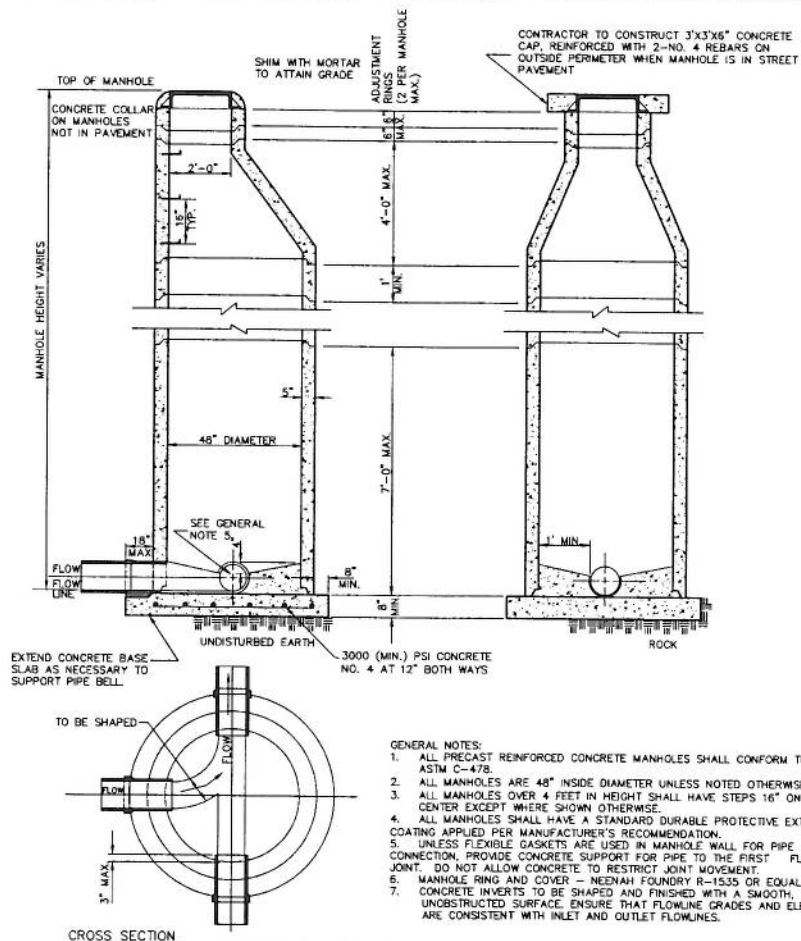
BENCHMARKS: (PER SURVEY PROVIDED BY SAVOY COMPANY, P.A.)
 BENCHMARK: SQUARE CUT ON TOP OF CURB 52.8' W. & 16.1' N.E.
 CORNER OF SUBJECT PROPERTY. ELEV=1332.00 NAVD 88

\\WORKGROUP\DWG\A10_5014\DESIGN\STORM\5014DPP.dwg, 1/19/2011, 7:43:37 AM, LBY

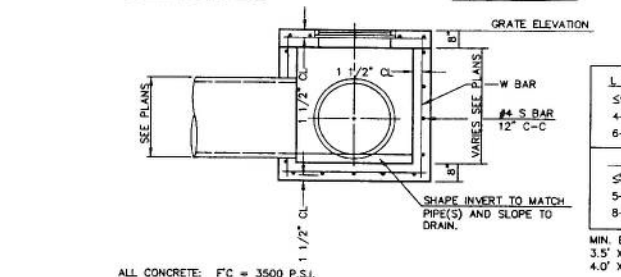
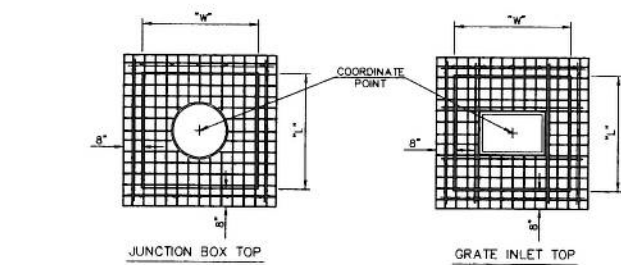
THIS DRAWING SHALL NOT BE UTILIZED BY ANY PERSON, FIRM, OR CORPORATION IN WHOLE OR IN PART WITHOUT THE SPECIFIC PERMISSION OF KAW VALLEY ENGINEERING, INC.

KAW VALLEY ENGINEERING IS AUTHORIZED TO OFFER ENGINEERING SERVICES IN THE STATE OF KANSAS UNTIL DECEMBER 31, 2012 BY LICENSE NUMBER E-113

\\mscode010\p\p413_501400DET.dwg, 11/22/11 7:46:55 AM, LJB



STORM SEWER MANHOLE 472



ALL CONCRETE: FC = 3500 P.S.I.

NOTE: WHERE PIPE SIZE ALLOWS, A 4' DIAMETER PRECAST MANHOLE, CONSTRUCTED AND REINFORCED IN ACCORDANCE WITH ANSI/ASTM C478, MAY BE USED IN LIEU OF CAST-IN-PLACE BOX. ALTERNATE MATERIALS AND CONSTRUCTION METHODS MAY BE USED WITH THE ENGINEER'S APPROVAL.

CASTING NUMBERS ARE NEENAH FOUNDRY. EQUAL SUBSTITUTIONS ARE PERMITTED.
 JUNCTION BOX LID AND RING - R-6019
 GRATE - R-6673-J, USE R-6673-O WHERE DOUBLE GRATE IS SPECIFIED
 UNLESS OTHERWISE NOTED ON SITE GRADING PLAN

GRATE INLET OR JUNCTION BOX 403

- GENERAL NOTES:**
1. ALL PRECAST REINFORCED CONCRETE MANHOLES SHALL CONFORM TO ASTM C-478.
 2. ALL MANHOLES ARE 48" INSIDE DIAMETER UNLESS NOTED OTHERWISE.
 3. ALL MANHOLES OVER 4 FEET IN HEIGHT SHALL HAVE STEPS 16" ON CENTER EXCEPT WHERE SHOWN OTHERWISE.
 4. ALL MANHOLES SHALL HAVE A STANDARD DURABLE PROTECTIVE EXTERNAL COATING APPLIED PER MANUFACTURER'S RECOMMENDATION.
 5. UNLESS FLEXIBLE GASKETS ARE USED IN MANHOLE WALL FOR PIPE CONNECTION, PROVIDE CONCRETE SUPPORT FOR PIPE TO THE FIRST FLEXIBLE JOINT. DO NOT ALLOW CONCRETE TO RESTRICT JOINT MOVEMENT.
 6. MANHOLE RING AND COVER - NEENAH FOUNDRY R-1535 OR EQUAL.
 7. CONCRETE INVERTS TO BE SHAPED AND FINISHED WITH A SMOOTH, UNOBSTRUCTED SURFACE. ENSURE THAT FLOWLINE GRADES AND ELEVATIONS ARE CONSISTENT WITH INLET AND OUTLET FLOWLINES.

REV	DATE	DESCRIPTION	CHK
B	1-19-11	FOR CITY REVIEW	B.H
A	12-13-10	FOR CITY REVIEW	KDB
			DSN
			DWN
			CHK

2319 NORTH JACKSON
 P.O. BOX 1304
 JUNCTION CITY, KANSAS 66441
 785-782-5040 FAX 785-782-7744
 E-MAIL jck@kveeng.com
 WEB SITE www.kveeng.com

KAW VALLEY ENGINEERING, INC. - CONSULTING ENGINEERS
 Offices: Junction City, Mo., Lawrence, Mo., Lenexa, Mo., Salina, Mo.,

BRAUM'S ICE CREAM & DAIRY STORES
 1261 S. ROCK ROAD
 WICHITA, KANSAS

DETAIL SHEET

PROJ. NO. A10_5014
 DATE DECEMBER 6, 2010
 DESIGNER KDB
 DRAWN BY B.H
 CFN REV
 SHEET 501400DET
 3 OF 3