

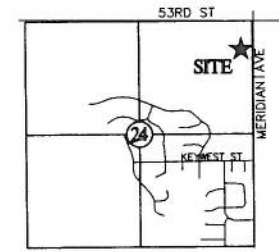
STORM SEWER IMPROVEMENTS

TO SERVE
LOT 6, BLOCK 1, JOHNSON COMMERCIAL CENTER
PROJECT NO. 2073 PPS (607861)
CITY OF WICHITA, KANSAS
JAMES L. ARMOR, P.E. - CITY ENGINEER



ANDERSON A/E ENGINEERING, INC
 ENGINEERS - SURVEYORS - LABORATORIES - DRILLING
 204 W. WOODLAND - SPRINGFIELD, MISSOURI 65702 - PHONE (417) 862-2741
 COM # 8-127 ENGINEER REGISTRATION # PE-16221 NEIL S. BRADY

PROJ # 10094-10
 DRAWING # C&G-NSB
 REVISIONS:
 BY: ATH
 DATE: 10-7-10
 WB-108-718



SECTION 24
 T 26 S, R 1 W
 SCALE: 1" = 2000'

COORDINATE CONTROL TABLE			
CONTROL NO.	DESCRIPTION	NORTHING	EASTING
1	NE CORNER LOT 6, BLOCK A, JOHNSON COMMERCIAL CENTER	1719715.14	1638302.52
2	SE CORNER LOT 6, BLOCK A, JOHNSON COMMERCIAL CENTER	1719555.83	1638304.64
3	SW CORNER LOT 6, BLOCK A, JOHNSON COMMERCIAL CENTER	1719553.42	1638104.65
4	NW CORNER LOT 6, BLOCK A, JOHNSON COMMERCIAL CENTER	1719712.42	1638102.53

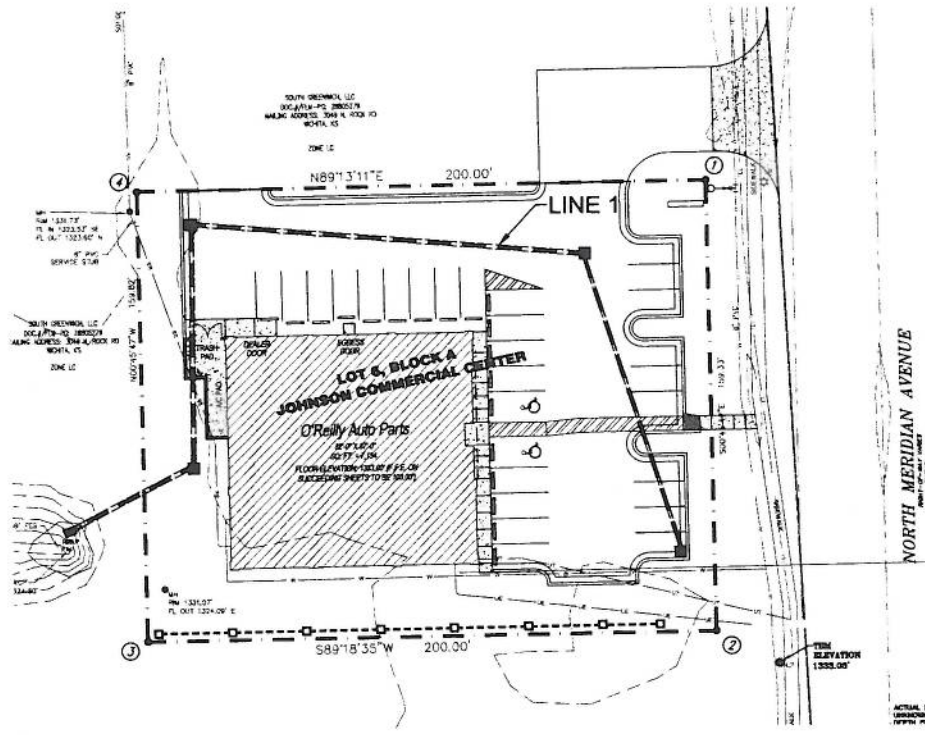
INDEX OF SHEETS

1. STORM SEWER COVER
2. STORM SEWER PLAN/PROFILE
3. STORM SEWER INLET DETAIL

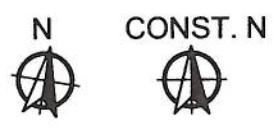
CONTRACTOR TO USE EXTREME CAUTION WHEN EXCAVATING NEAR UTILITY LINES. CONTRACTOR TO HAND DIG TO EXPOSE ALL UTILITY LINES PRIOR TO CONSTRUCTION. VERIFY DEPTH TO DETERMINE IF ANY CONFLICT EXISTS.

GENERAL NOTES:

- CONTRACTOR WILL BE REQUIRED TO PROVIDE NOTICE TO UTILITY COMPANIES A MINIMUM OF SEVENTY-TWO (72) HOURS PRIOR TO ANY EXCAVATION AS FOLLOWS:
 KANSAS ONECALL 800-477-8879
 THE CONTRACTOR MUST NOTIFY THE FOLLOWING IN CASE OF AN EMERGENCY:
 COX COMMUNICATIONS 716-262-4270
 KANSAS GAS SERVICE 1-800-462-4800
 WESTAR ENERGY 316-383-8800
 AT&T 316-268-2243
 CITY OF WICHITA WATER DEPT. 316-268-4463
 CITY OF WICHITA SEWER MAINT. 316-268-4524
 CITY OF WICHITA STORM SEWER MAINT. 316-268-4892
 CITY OF WICHITA TRAFFIC MAINT. 316-268-4534
- UTILITY SERVICE LINES, POLES, VALVE BOXES, METERS, AND ETC. ARE TO BE ADJUSTED AS NECESSARY BY OTHERS PRIOR TO CONSTRUCTION UNLESS THE PLANS SPECIFICALLY CALL FOR THEIR ADJUSTMENT BY THE CONTRACTOR OR UNLESS THE PLANS SPECIFICALLY IDENTIFY A UTILITY TO BE ADJUSTED BY ITS OWNER DURING CONSTRUCTION. EXISTING UTILITIES AND THEIR LOCATION AS SHOWN ON THE PLANS REPRESENT THE BEST INFORMATION OBTAINABLE FOR DESIGN. THE CONTRACTOR WILL BE REQUIRED TO WORK AROUND EXISTING UTILITIES WITHIN THE RIGHT-OF-WAY WHICH DO NOT CONFLICT WITH PROPOSED CONSTRUCTION.
- REMOVE FROM THE REMOVAL OF MISCELLANEOUS STRUCTURES AND EXCESS EXCAVATION WHICH IS TO BE WAIVED SHALL BE DEPOSITED ON SITE TO BE PROVIDED THE CONTRACTOR. THESE SITES SHALL BE APPROVED BY THE ENGINEER AS TO STABILITY, APPEARANCE AND SITE LOCATION. LOCATIONS IN THE OPINION OF THE ENGINEER THAT WILL LEAVE AN UGLY APPEARANCE WILL NOT BE APPROVED. ALL DISPOSAL SITES MUST BE APPROVED BY THE KANSAS DEPARTMENT OF HEALTH AND ENVIRONMENT. MATERIAL STORED OR DEPOSITED IN A FLOOD PLAIN WOULD REQUIRE A KANSAS STATE BOARD OF AGRICULTURE PERMIT. ANY MATERIAL DUMPED BY MATTERS OF THE UNITED STATES OR TERRITORIES IS SUBJECT TO U.S. CORPS OF ENGINEERS PERMITTING REGULATIONS. ANY MATERIAL BARRED OR STOCKPILED BEYOND APPROVED CONSTRUCTION LIMITS WOULD REQUIRE ADDITIONAL ARCHAEOLOGICAL INVESTIGATIONS UNLESS BARRED IN A PREVIOUSLY APPROVED BORROW LOCATION.
- ALL DISTURBED AREAS ARE NOT INTENDED FOR PAVEMENT OR SIDEWALK CONSTRUCTION SHALL BE SEEDED WITH KANSAS PREMIUM PESCUE BLEND AT A RATE OF 1 LB./1000 SQ. FT., FERTILIZED WITH A 16-24 RATIO AT A RATE OF 16 LB./1000 SQ. FT. MULCH SHALL BE "MATTED" WITH POKES OR PUNCHED INTO SOIL TO REDUCE LOSS DUE TO WIND.
- THE CONTRACTOR SHALL GIVE ALL PROPERTY OWNERS AND/OR TENANTS OF DEVELOPED PROPERTY ABUTTING THE CONSTRUCTION OF THIS PROJECT A MINIMUM OF TWO (2) DAYS NOTICE PRIOR TO START OF CONSTRUCTION.
- CONTRACTOR SHALL FURNISH THE INSPECTOR WITH A COPY OF THE MANUFACTURERS CERTIFICATION FOR ANY PIPE USED ON THIS PROJECT AFTER COMPLETION OF PIPE LAY ON THIS PROJECT AFTER COMPLETION OF PIPE INSTALLATION THE ENGINEER WILL NOT CERTIFY THE PROJECT TO THE CITY UNTIL PIPE CERTIFICATION HAS BEEN RECEIVED.
- ALL WATER LINES AND APPURTENANCES SHALL BE INSTALLED IN ACCORDANCE WITH THE MOST RECENT EDITION OF CITY OF WICHITA, KANSAS STANDARD SPECIFICATIONS FOR THE CONSTRUCTION OF CITY PROJECTS.
- CONTRACTOR SHALL NOT START WORK ON THE PROJECT UNTIL THE PROJECT INSPECTOR IS ASSIGNED TO THE PROJECT AND IS PRESENT ON THE SITE. CONTRACTOR SHALL NOT START ON THE PROJECT UNTIL ALL NECESSARY BONDS AND PERMITS HAVE BEEN OBTAINED. BONDS MAY INCLUDE, BUT ARE NOT LIMITED TO, STATUTORY, PERFORMANCE & MAINTENANCE FOR AREAS IN PUBLIC RIGHT-OF-WAY AND EASEMENT. FOR PROJECTS WITHIN THE CITY OF WICHITA CONTACT THE MAJOR (316) 268-4534. ANY WORK DONE WITHOUT INSPECTION WILL BE REQUIRED TO BE UNCOVERED FOR INSPECTION.
- TRAFFIC WILL NOT BE AFFECTED BY THE CONSTRUCTION OF THIS PROJECT.
- TREES IN CONFLICT WITH CONSTRUCTION SHALL BE REMOVED OR TRIMMED AS NECESSARY.



SITE PLAN
 SCALE: 1" = 30'



APPROVED AS NOTED
 BY CITY ENGINEER OF WICHITA

Sanitary Sewers N/A
 Storm Sewers Julianne Kallman 10-7-10
 Driveway Approaches N/A
 Water Mains N/A
 Paving N/A

NOTE TO CONTRACTORS

Inspection and testing for this project are to be provided by a Licensed Consulting Engineering Firm under contract with the Owner/Developer. Said inspection to be in accordance with the City of Wichita standard construction engineering practices and certified by a Licensed Professional Engineer. No work shall be performed in dedicated easements or public right-of-way by the Contractor without such inspection, nor shall any work be commenced without written authorization by the City Engineer.

SYMBOLS LEGEND			
REFER TO SURVEY (SV1) FOR EXISTING CONDITION SYMBOLS LEGEND AND SITE CONTROL	NEW SPOT ELEVATIONS		
--- 1333 ---	EXISTING GRADE LINES	LIST GRADE	NONE
— 1333 —	PROPOSED NEW GRADE LINES	SIDEWALK	SW
[Hatched Box]	NEW BUILDING CONSTRUCTION	TOP OF WALL	TW
[Empty Box]	NEW MONUMENT SIGN LOCATION	TOP OF CURB	TC
---	TEMPORARY EROSION CONTROL FENCE	TOP OF PAVEMENT	PVT
---	SURFACE FLOW ARROW	NEW GRADE	GO
		CONCRETE	CONC
		EXISTING TOP OF CURB	ETC
		EXISTING GRADE	EGD
		EXISTING PAVEMENT	EPV
		EXISTING SIDEWALK	ESW
		FLOW LINE	FL
		TOP OF BERM	TOP
		TEMPORARY BENCH MARK	
		RAILROAD SPIKE ON THE WEST SIDE OF LIGHT POLE AT THE SOUTHEAST CORNER OF JOHNSON COMMERCIAL CENTRE ADDITION.	
		ELEVATION = 1333.08'	
		(REFER TO SV1 FOR VERTICAL CONTROL)	



CRAIG A. SCHNEIDER, AIA
ARCHITECT
 1736 East Sunshine, Suite 417
 Springfield, Missouri 65804
 Phone: 417.862.6558
 Fax: 417.862.3265
 e-mail: arcbtct@cityrehabcenter.com

North Meridian Ave. North
 WICHITA, KS
 (WICHITA #10)

O'Reilly AUTO PARTS
 Corporate Office:
 233 South Patterson, Springfield, Mo 65802
 Phone: (417) 862-3333 FAX: (417) 874-7112

COMM # 2794

DATE: 10-05-10
 REVISION
 DATE:

ANDERSON (A/E) ENGINEERING, INC.
 ENGINEERS - SURVEYORS - LABORATORIES - DRILLING
 2045 W. WOODLAND - SPRINGFIELD, MISSOURI 65807 - PHONE (417) 862-7241
 COMM # 6137 ENGINEER REGISTRATION # PE-16221 NEIL S. BRADY

BY: ATH
 10094-10 CKD: NSB
 DRAWING #
 WB-108-718



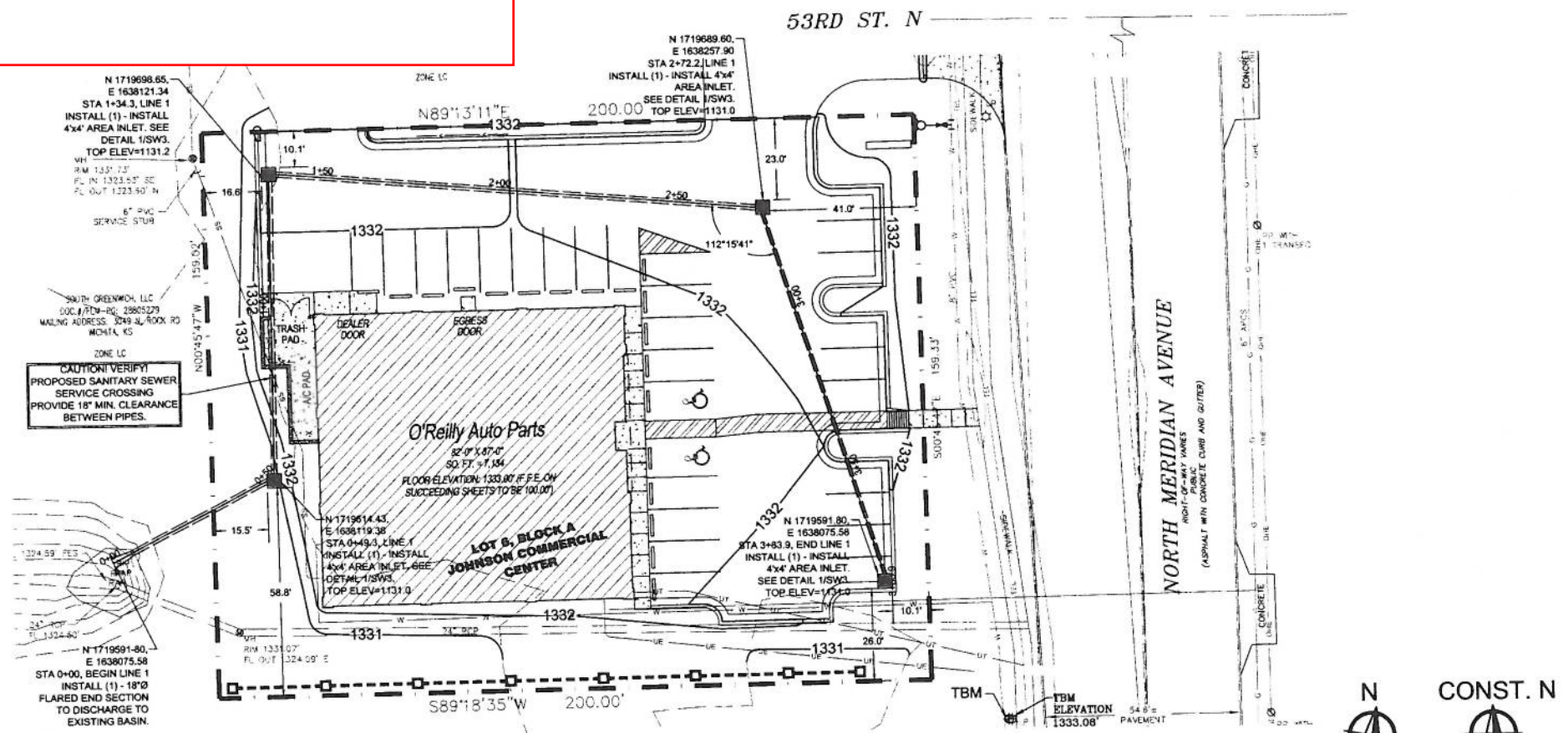
CRAIG A. SCHNEIDER, AIA
 ARCHITECT
 1736 East Tenthline, Suite 417
 Springfield, Missouri 65804
 Phone: 417.862.6558
 Fax: 417.862.3765
 e-mail: arcitect@eterefrschneider.com

New O'Reilly Auto Parts Store
 NORTH MERIDIAN AVE.
 WICHITA, KS
 (WICHITA #10)

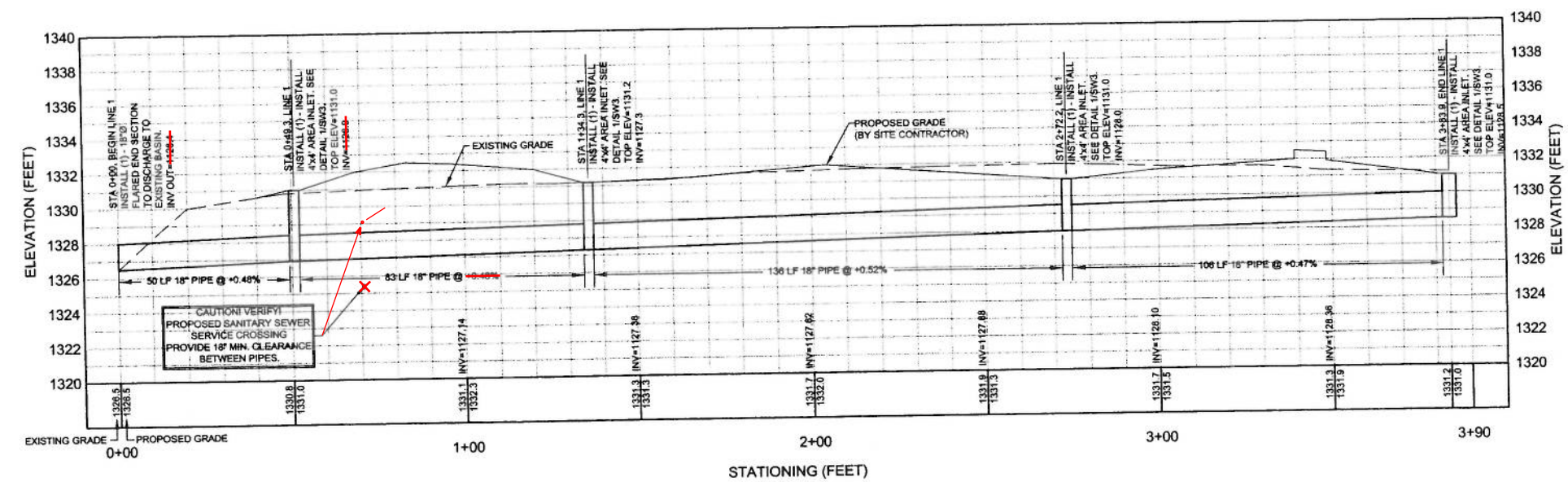
O'Reilly AUTO PARTS
 Corporate Office:
 233 South Patterson, Springfield, Mo 65802
 Phone: (417) 862-3333 FAX: (417) 874-7112

COMM # 2794

DATE: 09-13-10
 REVISION DATE:



1 LINE 1 - STORMWATER SEWER PLAN
 SW2 SCALE: 1" = 20'



2 LINE 1 - STORMWATER SEWER PROFILE
 SW2 HORIZONTAL SCALE: 1" = 20' VERTICAL SCALE: 1" = 5'



ANDERSON (A/E) ENGINEERING, INC

ENGINEERS - SURVEYORS - LABORATORIES - DRILLING
 2043 W. WOODLAND - SPRINGFIELD, MISSOURI 65807 - PHONE (417) 866-2741
 COMM. E-137 ENGINEER REGISTRATION # PE-16221 NEIL S. BRADY

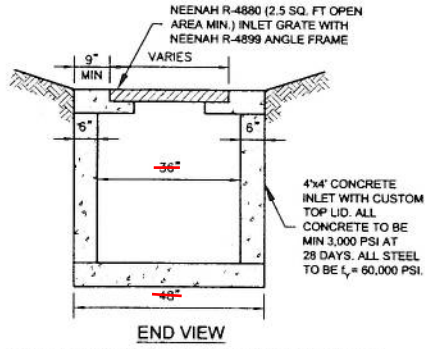
PROJ # BY: ATH REVISIONS:
 10094-10 [CKP: NSB]
 DRAWING #
 WB-108-718



CRAIG A. SCHNEIDER, AIA
ARCHITECT
 1736 East Sunshine, Suite 417
 Springfield, Missouri 65804
 417.862.8558
 Fax: 417.862.3265
 e-mail: architect@eterfyndecr.com

Next: O'Reilly Auto Parts Store
 NORTH MERIDIAN AVE.
 WICHITA, KS
 (WICHITA #10)

O'Reilly AUTO PARTS
 Corporate Office:
 233 South Patterson, Springfield, Mo 65802
 Phone: (417) 862-3333 FAX: (417) 874-7112



NOTE: MIN. #4 BARS @ 12" O.C. (ALL WALLS VERT, HOR, & SLAB)

1 CONCRETE 4'x4' AREA INLET
SW3 SCALE: NOT TO SCALE

COMM # 2794

DATE: 09-13-10

REVISION DATE: