

WATER DISTRIBUTION SYSTEM IMPROVEMENTS

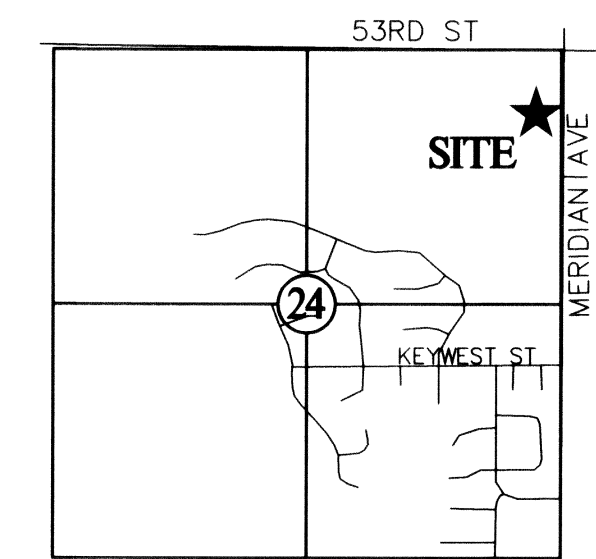
TO SERVE
LOT 6, BLOCK 1, JOHNSON COMMERCIAL CENTER
PROJECT NO. 1561 PPW (607853)
CITY OF WICHITA, KANSAS
JAMES L. ARMOR, P.E. - CITY ENGINEER

As-Built Plans - Built as Designed
 Contractor: Utilities Plus
 Inspector: Randy Voth, C.E.D.
 pdf by: Certified Engineering Design

1-8-2011

ANDERSON A/E ENGINEERING, INC.
 ENGINEERS • SURVEYORS • LABORATORIES • DRILLING
 2045 W. WOODLAND • SPRINGFIELD, MISSOURI 65807 • PHONE (417) 866-2741
 CO. # E-137 ENGINEER REGISTRATION # PE-10221 NEIL S. BRADY

PROJ. # 10094-10
 DRAWING # WB-108-718
 BY: ATH
 REVISIONS:



LOCATION SKETCH
 SECTION 24
 T 26 S, R 1 W
 SCALE: 1"=2000'

CONTRACTOR TO USE EXTREME CAUTION WHEN EXCAVATING NEAR UTILITY LINES. CONTRACTOR TO HAND DIG TO EXPOSE ALL UTILITY LINES PRIOR TO CONSTRUCTION. VERIFY DEPTH TO DETERMINE IF ANY CONFLICT EXISTS.

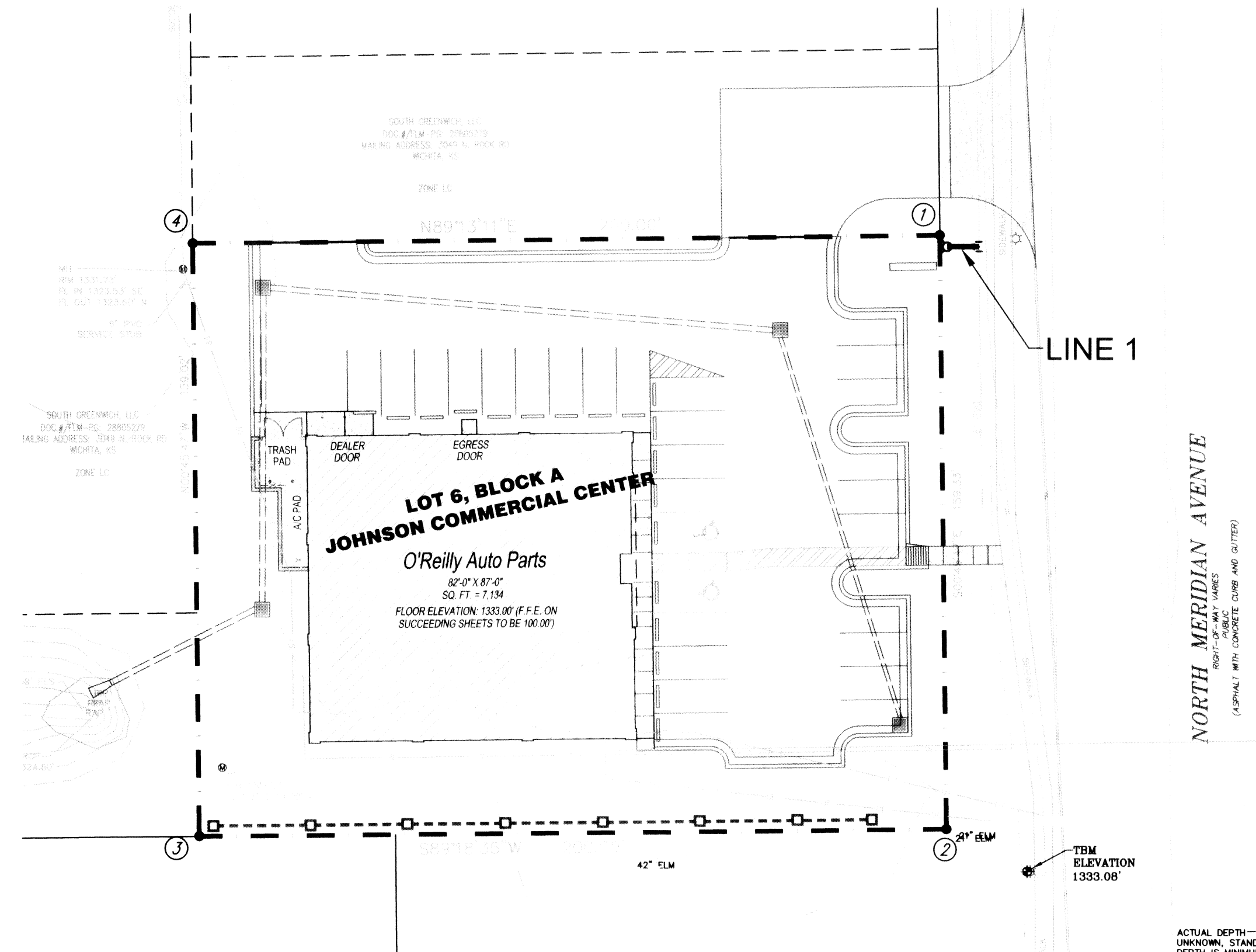
COORDINATE CONTROL TABLE			
CONTROL NO.	DESCRIPTION	NORTHING	EASTING
①	NE CORNER LOT 6, BLOCK A, JOHNSON COMMERCIAL CENTER	1719715.14	1638302.52
②	SE CORNER LOT 6, BLOCK A, JOHNSON COMMERCIAL CENTER	1719555.83	1638304.64
③	SW CORNER LOT 6, BLOCK A, JOHNSON COMMERCIAL CENTER	1719553.42	1638104.65
④	NW CORNER LOT 6, BLOCK A, JOHNSON COMMERCIAL CENTER	1719712.42	1638102.53

INDEX OF SHEETS

1. WATER DISTRIBUTION COVER
2. WATER DISTRIBUTION PLAN/PROFILE
3. FIRE HYDRANT ASSEMBLY DETAIL

GENERAL NOTES:

1. CONTRACTOR WILL BE REQUIRED TO PROVIDE NOTICE TO UTILITY COMPANIES A MINIMUM OF SEVENTY-TWO (72) HOURS PRIOR TO ANY EXCAVATION, AS FOLLOWS:
 KANSAS ONE-CALL 687-2470
 THE CONTRACTOR MUST NOTIFY THE FOLLOWING IN CASE OF AN EMERGENCY:
 COX COMMUNICATIONS 316-262-4210
 KANSAS GAS SERVICE 1-888-482-4890
 WESTAR ENERGY 316-383-8650
 AT&T 316-268-2245
 CITY OF WICHITA WATER DEPT. 316-268-4563
 CITY OF WICHITA SEWER MAINT. 316-268-4024
 CITY OF WICHITA STORM SEWER MAINT. 316-268-4000
 CITY OF WICHITA TRAFFIC MAINT. 316-268-4034
2. UTILITY SERVICE LINES, POLES, VALVE BOXES, METERS, AND ETC. ARE TO BE ADJUSTED AS NECESSARY BY OTHERS PRIOR TO CONSTRUCTION UNLESS THE PLANS SPECIFICALLY CALL FOR THEIR ADJUSTMENT BY THE CONTRACTOR OR UNLESS THE PLANS SPECIFICALLY IDENTIFY A UTILITY TO BE ADJUSTED BY ITS OWNER DURING CONSTRUCTION. EXISTING UTILITIES AND THEIR LOCATION AS SHOWN ON THE PLANS, REPRESENT THE BEST INFORMATION OBTAINABLE FOR DESIGN. THE CONTRACTOR WILL BE REQUIRED TO WORK AROUND EXISTING UTILITIES WITHIN THE RIGHT-OF-WAY WHOSE LOCATION DOES NOT CONFLICT WITH PROPOSED CONSTRUCTION.
3. RUBBLE FROM THE REMOVAL OF MISCELLANEOUS STRUCTURES AND EXCESS EXCAVATION WHICH IS TO BE WASTED SHALL BE DISPOSED OF ON SITES TO BE PROVIDED BY THE CONTRACTOR. THESE SITES SHALL BE APPROVED BY THE ENGINEER AS TO SUITABILITY, APPEARANCE AND SITE LOCATION. LOCATIONS, IN THE OPINION OF THE ENGINEER, THAT WILL LEAVE AN UNSIGHTLY APPEARANCE WILL NOT BE APPROVED. ALL DISPOSAL SITES MUST BE APPROVED BY THE KANSAS DEPARTMENT OF HEALTH AND ENVIRONMENT. MATERIAL EITHER STOCKPILED OR DISPOSED OF IN A FLOOD PLAIN WOULD REQUIRE A KANSAS STATE BOARD OF AGRICULTURE PERMIT. ANY MATERIAL DUMPED IN WATERS OF THE UNITED STATES OR WETLANDS IS SUBJECT TO U.S. CORPS OF ENGINEERS PERMITTING REGULATIONS. ANY MATERIAL BURIED OR STOCKPILED BEYOND APPROVED CONSTRUCTION LIMITS WOULD REQUIRE ADDITIONAL ARCHAEOLOGICAL INVESTIGATIONS UNLESS BURIED IN A PREVIOUSLY APPROVED BORROW LOCATION.
4. ALL DISTURBED RW AREAS NOT INTENDED FOR PAVEMENT OR SIDEWALK CONSTRUCTION SHALL BE SEEDED WITH KANSAS PREMIUM FESCUE BLEND AT A RATE OF 8 LB./1000 SQ. FT., FERTILIZED WITH A 16-24-8 RATIO AT A RATE OF 42 LB./1000 SQ. FT. MULCH SHALL BE "WATERS" WITH FORKS OR PUNCHED INTO SOIL TO REDUCE LOSS DUE TO WIND.
5. THE CONTRACTOR SHALL GIVE ALL PROPERTY OWNERS AND/OR TENANTS OF DEVELOPED PROPERTY ADJUTING THE CONSTRUCTION OF THIS PROJECT A MINIMUM OF TWO (2) DAYS NOTICE PRIOR TO START OF CONSTRUCTION.
6. CONTRACTOR SHALL FURNISH THE INSPECTOR WITH A COPY OF THE MANUFACTURERS CERTIFICATION FOR ANY PIPE USED ON THIS PROJECT AFTER COMPLETION OF PIPE USED ON THIS PROJECT AFTER COMPLETION OF PIPE INSTALLATION. THE ENGINEER WILL NOT CERTIFY THE PROJECT TO THE CITY UNTIL PIPE CERTIFICATION HAS BEEN RECEIVED.
7. ALL WATER LINES AND APPURTENANCES SHALL BE INSTALLED IN ACCORDANCE WITH THE MOST RECENT EDITION OF CITY OF WICHITA, KANSAS STANDARD SPECIFICATIONS FOR THE CONSTRUCTION OF CITY PROJECTS.
8. CONTRACTOR SHALL NOT START WORK ON THE PROJECT UNTIL THE PROJECT INSPECTOR IS ASSIGNED TO THE PROJECT AND IS PRESENT ON THE SITE. CONTRACTOR SHALL NOT START ON THE PROJECT UNTIL ALL NECESSARY BONDS AND PERMITS HAVE BEEN OBTAINED. BONDS MAY INCLUDE, BUT ARE NOT LIMITED TO, STATUTORY PERFORMANCE & MAINTENANCE FOR AREAS IN PUBLIC RIGHT-OF-WAY AND EASEMENT. FOR PROJECTS WITHIN THE CITY OF WICHITA CONTACT TOM MASON (316-268-4574). ANY WORK DONE WITHOUT INSPECTION WILL BE REQUIRED TO BE UNCOVERED FOR INSPECTION.
9. OPENING AND CLOSING OF WATER VALVES SHALL BE DONE SLOWLY TO PREVENT DAMAGE TO THE WATER DISTRIBUTION SYSTEM FROM WATER HAMMER. ALL VALVES CLOSED BY THE CONTRACTOR MUST BE REOPENED AS NEW CONSTRUCTION PERMITS. PROJECT INSPECTOR MUST ASCERTAIN THAT ANY VALVE CLOSED BY THE CONTRACTOR IS REOPENED. CONTRACTOR WILL BE PERMITTED TO OPERATE WATER VALVES ONLY WHEN THE PROJECT INSPECTOR ASSIGNED TO THE PROJECT IS PRESENT.



APPROVED AS NOTED
 BY CITY ENGINEER OF WICHITA

Public Works _____
 Water Utilities _____
 Fire Department _____

NOTE TO CONTRACTORS

Inspection and testing for this project are to be provided by a Licensed Consulting Engineering Firm under contract with the Owner/Developer. Said inspection to be in accordance with the City of Wichita standard construction engineering practices and certified by a Licensed Professional Engineer. No work shall be performed in dedicated easements or public right-of-way by the Contractor without such inspection, nor shall any work be commenced without written authorization by the City Engineer.

SYMBOLS LEGEND	
REFER TO SURVEY (SV1) FOR EXISTING CONDITION SYMBOLS LEGEND AND SITE CONTROL.	NEW SPOT ELEVATIONS
---	LIST GRADE
---	ABBREVIATION
---	NONE
---	SIDEWALK SW
---	TOP OF WALL TW
---	TOP OF CURB TC
---	TOP OF PAVEMENT PVT
---	NEW GRADE GD
---	CONCRETE CONC
---	EXISTING TOP OF CURB ETC
---	EXISTING GRADE EGD
---	EXISTING PAVEMENT EPVT
---	EXISTING SIDEWALK ESW
---	FLOW LINE FL
---	TOP OF BERM TOP
---	TEMPORARY BENCH MARK
---	RAILROAD SPIKE ON THE WEST SIDE OF LIGHT POLE AT THE SOUTHEAST CORNER OF JOHNSON COMMERCIAL CENTER ADDITION
---	ELEVATION = 1333.08' (REFER TO SV1 FOR VERTICAL CONTROL)

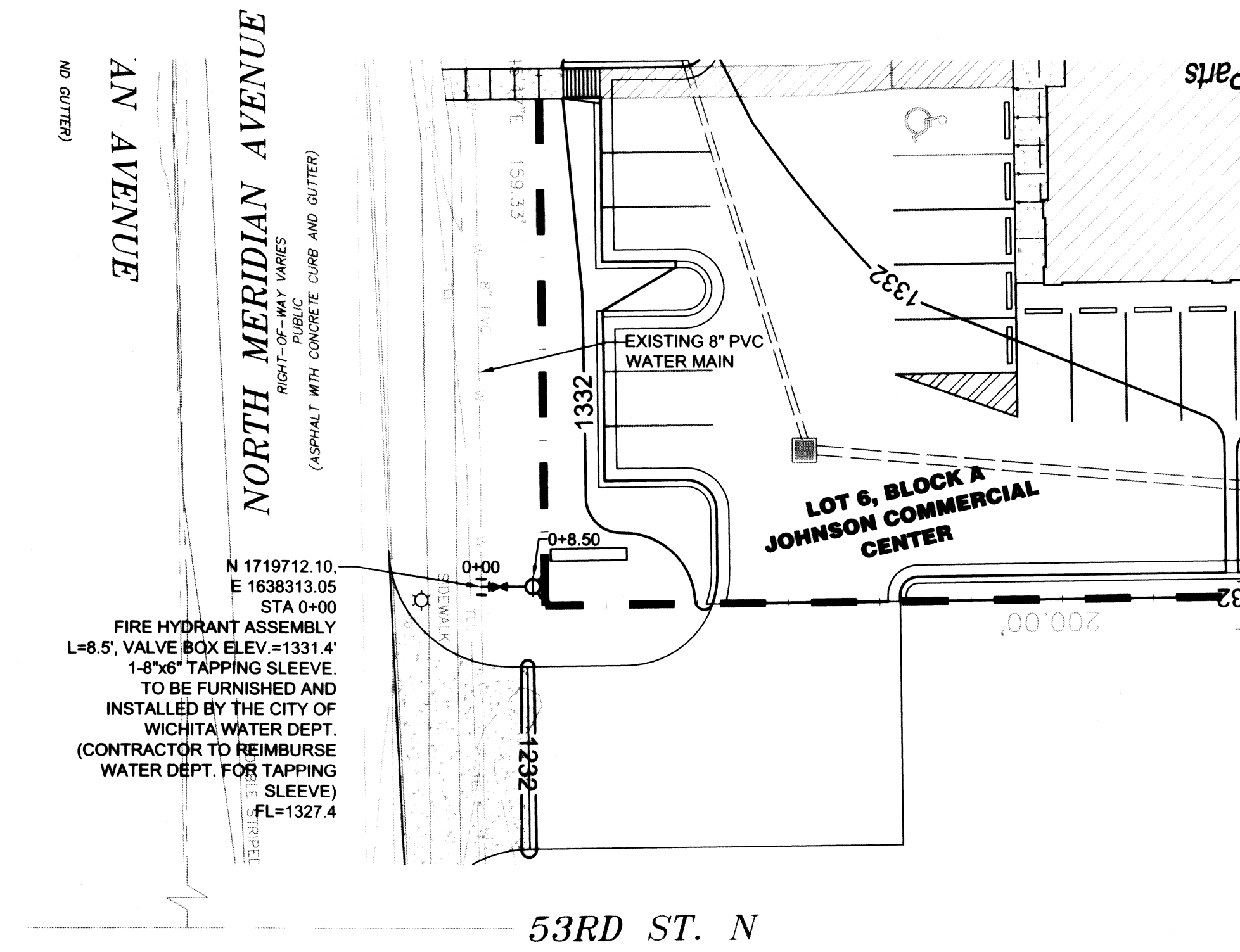
CRAIG A. SCHNEIDER, AIA
ARCHITECT
 1736 East Sunshine, Suite 417
 Springfield, Missouri 65804
 e-mail: architect@esterischnaider.com

O'Reilly AUTO PARTS
 Corporate Office:
 233 South Patterson, Springfield, Mo 65802
 Phone: (417) 862-3333 FAX: (417) 174-7112

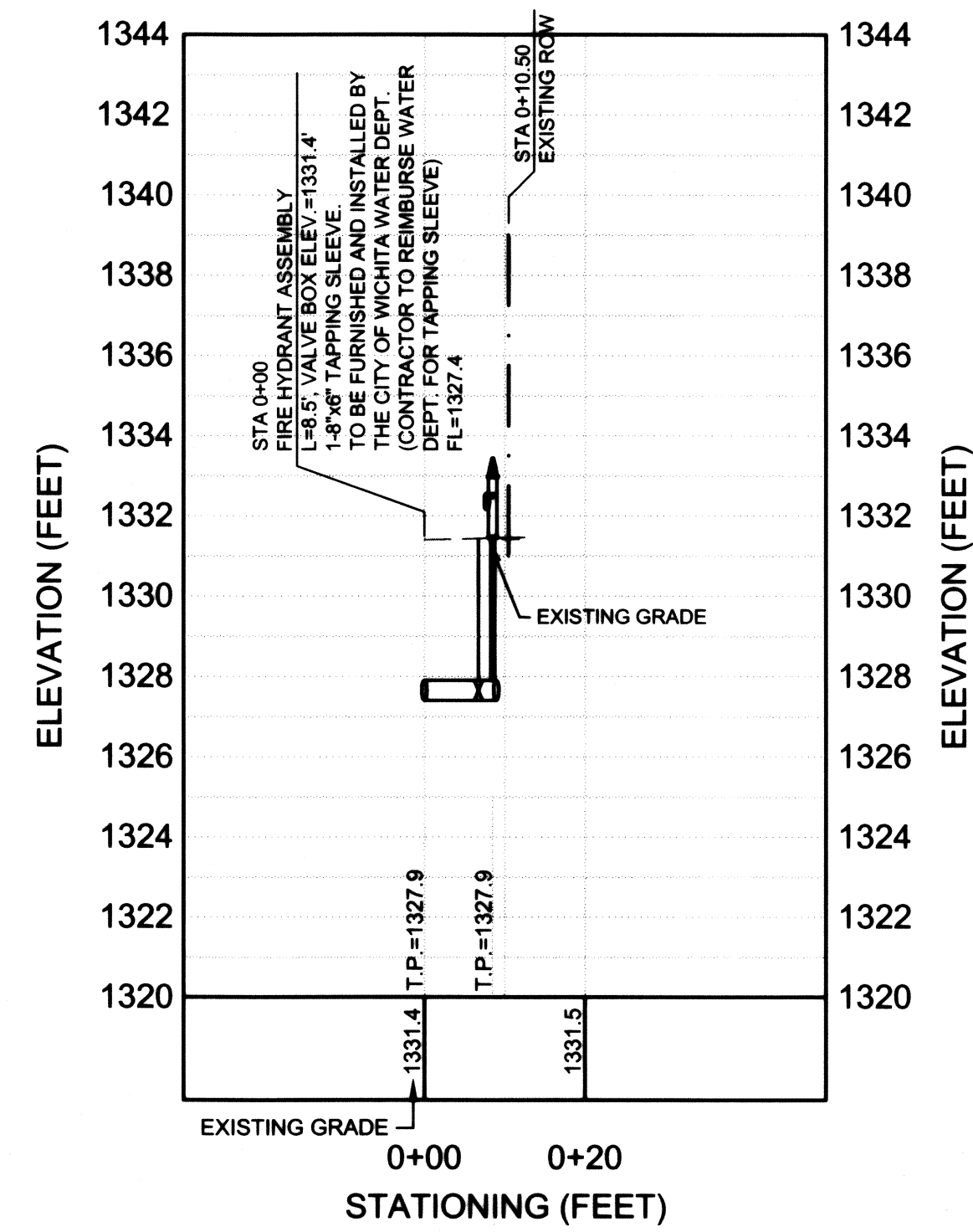
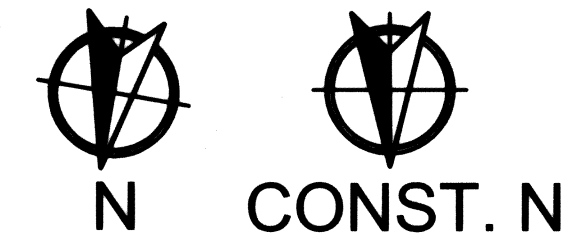
COMM # 2794
 DATE: 10-05-10
 REVISION
 DATE:

As-Built Plans-Built as Designed
 Contractor: Utilities Plus
 Inspector: Randy Voth, C.E.D.
 pdf by: Certified Engineering Design

4-8-10ll



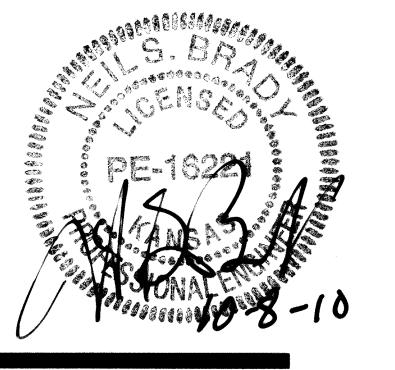
1 LINE 1 - WATER LINE WITH FIRE HYDRANT PLAN
W2 SCALE: 1" = 20'



2 LINE 1 - WATER LINE WITH FIRE HYDRANT PROFILE
W2 HORIZONTAL SCALE: 1" = 20'
 VERTICAL SCALE: 1" = 5'

ANDERSON A/E ENGINEERING, INC
 ENGINEERS • SURVEYORS • LABORATORIES • DRILLING
 2045 W. WOODLAND • SPRINGFIELD, MISSOURI 65807 • PHONE (417) 866-2741
 COMM # E-137 ENGINEER REGISTRATION # PE-16221 NEIL S. BRADY

PROJ # 10094-10
 DRAWING # 10094-10-010
 REVISIONS: BY: ATH
 CHECKED: NSB
 DRAWING # WB-108-718



CRAIG A. SCHNEIDER, AIA
ARCHITECT
 1736 East Sunshine, Suite 417
 Springfield, Missouri 65804
 e-mail: architect@esterlyschneider.com
 417-862-6558
 Fax: 417-862-3265

New O'Reilly Auto Parts Stores
 NORTH MERIDIAN AVE.
 WICHITA, KS
 (WICHITA #10)

O'Reilly AUTO PARTS
 Corporate Office:
 233 South Patterson, Springfield, Mo 65802
 Phone: (417) 862-3333 FAX: (417) 974-7112

COMM # 2794

DATE: 10-05-10

REVISION DATE:

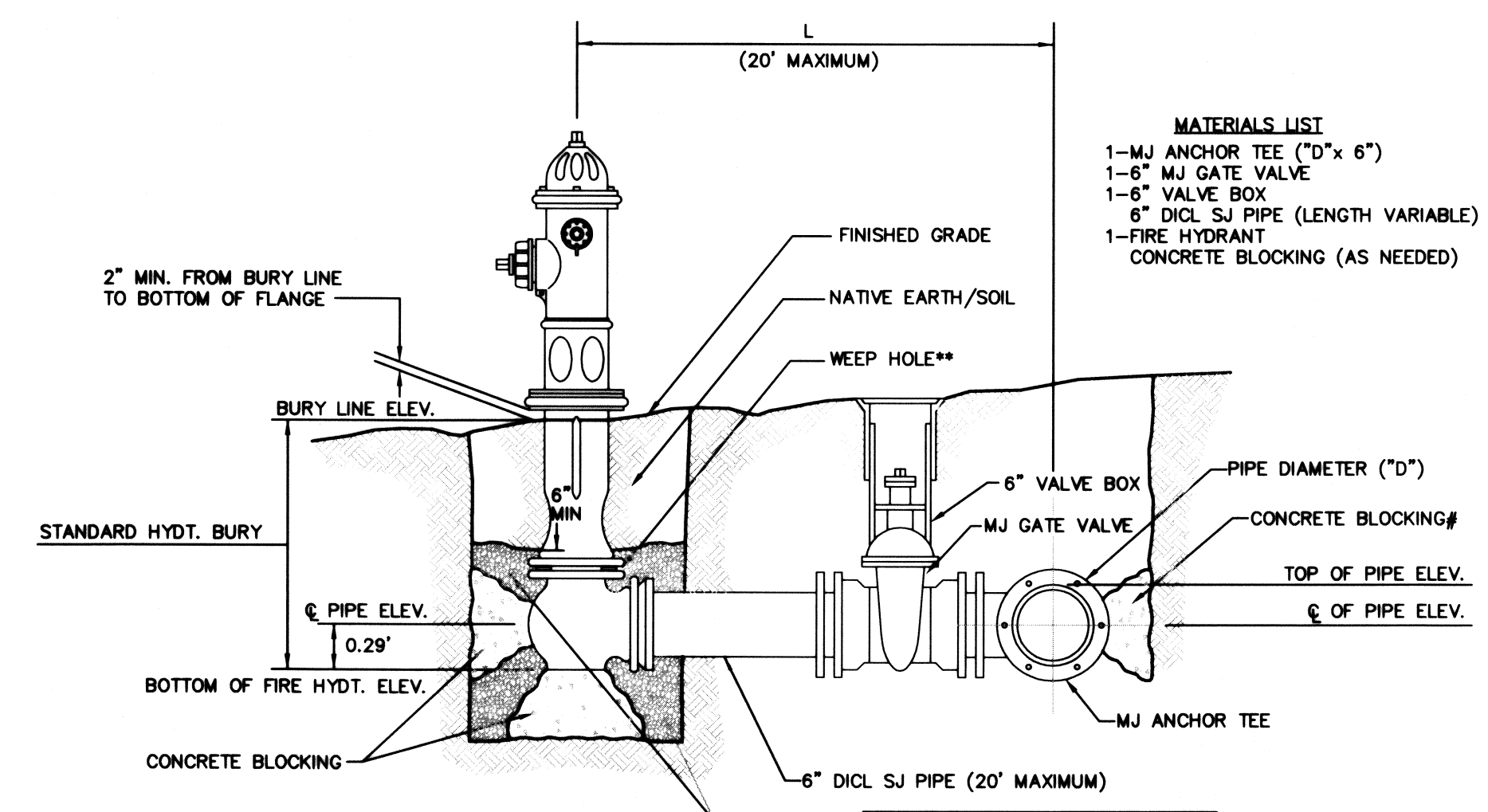
As-Built Plans-Built as Designed
 Contractor: Utilities Plus
 Inspector: Randy Voth, C.E.D.
 pdf by Certified Engineering Design

4-8-2011

ANDERSON A/E
ENGINEERING, INC

ENGINEERS • SURVEYORS • LABORATORIES • DRILLING
 2045 W. WOODLAND • SPRINGFIELD, MISSOURI 65807 • PHONE (417) 866-2741
 COMM # 137 ENGINEER REGISTRATION # PE-16221 NEIL S. BRADY

PROJ # BY: ATH REVISIONS:
 10094-10 [CKD] NSB
 DRAWING #
 WB-108-718



- MATERIALS LIST**
- 1-MJ ANCHOR TEE (10" x 6")
 - 1-6" MJ GATE VALVE
 - 1-6" VALVE BOX
 - 6" DI CL SJ PIPE (LENGTH VARIABLE)
 - 1-FIRE HYDRANT
 - CONCRETE BLOCKING (AS NEEDED)

** CAUTION! WEEP HOLES TO BE KEPT CLEAR DURING CONSTRUCTION AND BACKFILL CONCRETE FOR THRUST BLOCKING SHALL NOT OBSTRUCT WEEP HOLES.

CONCRETE THRUST BLOCKING SHALL BE KEPT CLEAR OF BOLTS, NUTS, AND MJ ACCESSORIES.

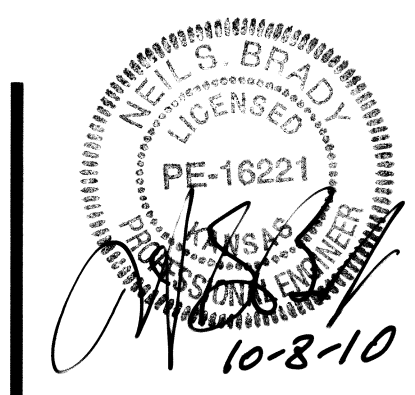
* IF HYDRANT BURY IS IN EXCESS OF 5', CONTRACTOR SHALL USE STANDARD 5' HYDRANT BURY AND HYDRANT BARREL EXTENSIONS AS NECESSARY.

MINIMUM 1 CU. FT. PER WEEP HOLE

PEA GRAVEL ## GRADATION REQUIREMENT	
SIEVE SIZE	SPECIFICATION % RETAINED
3/4"	0 - 5
1/2"	5 - 35
3/8"	40 - 85
# 4	95 - 100
# 8	97 - 100

FIRE HYDRANT ASSEMBLY
 PER CITY OF WICHITA SPECIFICATIONS

1 FIRE HYDRANT ASSEMBLY
W3 SCALE: NOT TO SCALE



CRAIG A. SCHNEIDER, AIA
ARCHITECT

1736 East Sunshine, Suite 417
 Springfield, Missouri 65804
 417-862-6558
 Fax: 417-862-3265
 e-mail: architect@estertyschneider.com

New O'Reilly Auto Parts Store
 NORTH MERIDIAN AVE.
 WICHITA, KS
 (WICHITA #110)

O'Reilly AUTO PARTS
 Corporate Office:
 233 South Patterson, Springfield, Mo 65802
 Phone: (417) 862-3333 FAX: (417) 874-7112

COMM # 2794

DATE: 10-05-10
 REVISION
 DATE: