

# PRIVATE WATER MAIN IMPROVEMENTS SELTZER ELEMENTARY SCHOOL LOT 2, BLOCK 1, CEDAR VIEW ADDITION PROJECT NUMBER 1491 PPW (607853)

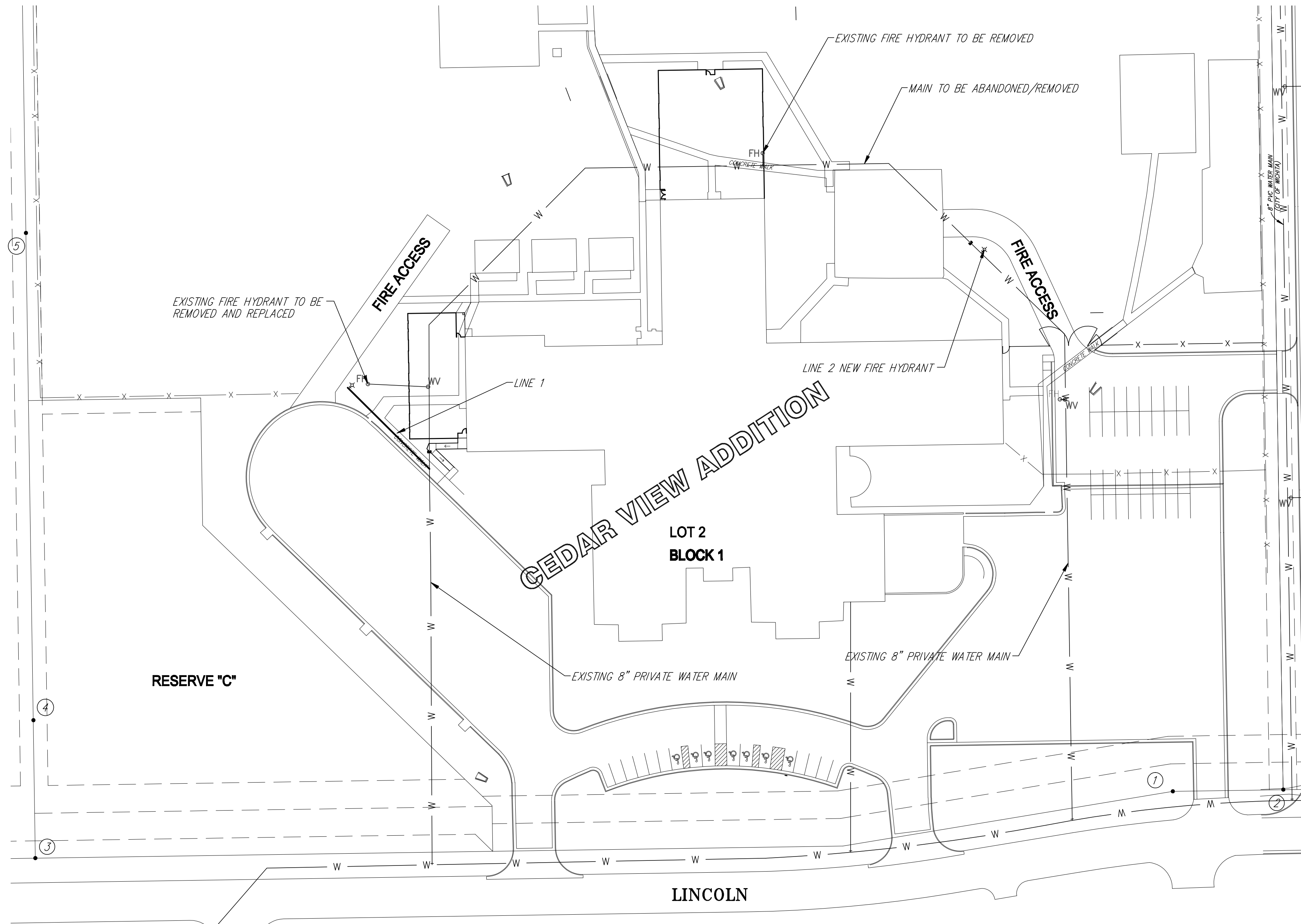
## GENERAL NOTES

- Contractor will be required to provide a minimum notice of 72 hours to utility companies prior to starting any excavation as follows:  
  

Kansas One-Call	687-2470
-----------------	----------

The Contractor must notify the following in case of an emergency:

Cox Communications	262-0661
Kansas Gas Service	383-8600
Westar Energy	383-8600
AT&T	1-800-286-8313
City of Wichita Water Utility	268-6000
- All water mains and appurtenances shall be installed in accordance with City of Wichita, Kansas, Standard Specifications for the Construction of City Projects, and current policy on construction of public works improvements by private contract.
- Opening and closing water valves shall be done slowly to prevent damage to the water distribution system from water hammer. All valves closed by the Contractor must be reopened as new construction permits. Project inspector must ascertain that any valve closed by the Contractor is reopened. Contractor will be permitted to operate water valves only when the project inspector assigned to the project is present.
- The Contractor shall give all property owners and/or tenants of developed property directly abutting the construction of this project a minimum of ten (10) days advance notice prior to start of construction.
- The Contractor shall be responsible for preserving property irons. The Contractor will be required to re-establish any property irons which are damaged or destroyed by his construction operations. Such irons shall be re-established by a licensed land surveyor in accordance with state laws.



## INDEX OF SHEETS

- (CITY SUBMITTAL INDEX)
- TITLE SHEET
  - WATER PLAN & PROFILE
  - WATER ASSEMBLY DETAILS

## BENCHMARKS

B.M.: CHISELED SQUARE ON TOP OF CURB AT THE NORTH CURB RETURN ON THE WEST SIDE OF THE WEST DRIVE ENTRANCE TO SELTZER ELEMENTARY SCHOOL 34' N. OF THE CENTERLINE OF LINCOLN & 200' E. OF THE CENTERLINE OF ROMNEY.  
ELEVATION = 1353.96 (NGVD29)

**APPROVED AS NOTED  
BY CITY ENGINEER OF WICHITA  
BY WICHITA FIRE DEPARTMENT  
BY WICHITA WATER UTILITY**

Public Works *[Signature]* 8/20/09

Water & Sewer *[Signature]* 9-1-09

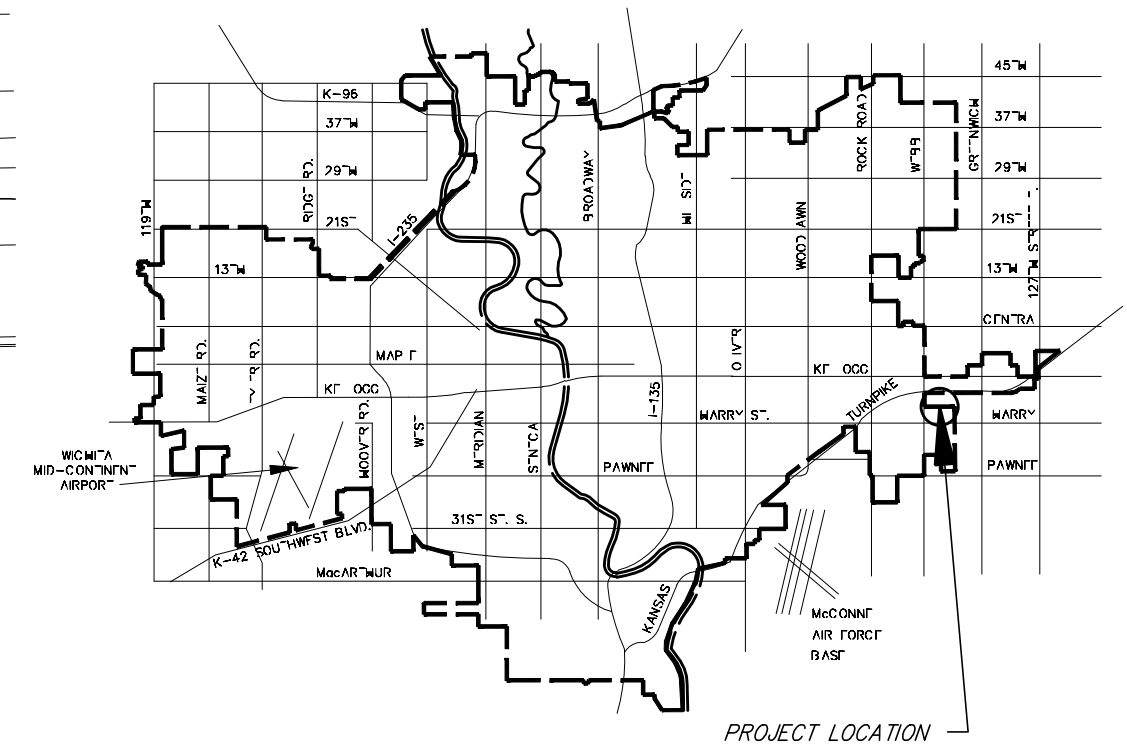
Fire Prot. Line *[Signature]* 9-02-09

**NOTE TO CONTRACTORS**

**Public Property:**  
Inspection and testing for the waterline is to be provided by a Licensed Consulting Engineering Firm under contract with the Owner/Developer. Said inspection to be in accordance with the City of Wichita standard construction engineering practices and certified by a Licensed Professional Engineer. No work shall be performed in dedicated easements or public right-of-way by the Contractor without such inspection nor shall any work be commenced without written authorization by the City Engineer. All Construction and Materials shall comply with the City of Wichita Specifications and Standards (on file and available in the City Engineer's Office).

**Private Property:**  
Inspection and testing for the fire protection line is to be performed by a City of Wichita certified fire protection contractor in accordance with the fire codes as adopted by the City of Wichita. All materials and construction practices for the fire protection line shall comply with the fire codes as adopted by the City of Wichita (available from the City of Wichita Fire Department). The Contractor shall not commence work without notification to and approval of the Wichita Fire Department.

BEDFORD CIRCLE



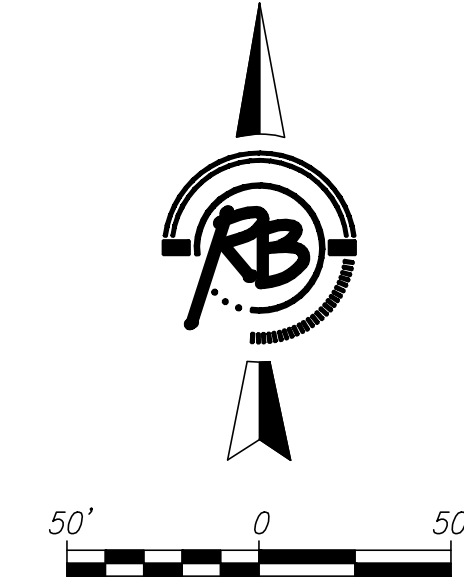
COORDINATE CONTROL TABLE				
CONTROL NO.	LOCATION	DESCRIPTION	NORTHING	EASTING
①	N. SIDE OF LINCOLN W. OF BEDFORD CIRCLE	(MKE 5/8")	20000.00	20000.00
②	NW CORNER OF LINCOLN & BEDFORD CIRCLE	(+F)	20001.24	20080.15
③	SW CORNER OF RESERVE "C"	(MKE 5/8")	19951.56	19174.58
④	WEST LINE OF RESERVE "C" N. OF PT #3	(MKE 5/8")	20051.60	19173.22
⑤	WEST LINE OF LOT 2, BLOCK 1, CEDAR VIEW ADD.	(MKE 5/8")	20405.07	20405.07

**AS BUILTS**

Contractor: Ewertz Excavation	Project Inspector: Larry Gann
-------------------------------------	----------------------------------

516 S. Market, Wichita, KS 67202 (316) 268-0242

**CITY OF WICHITA, KANSAS**  
**JAMES L. ARMOUR, P.E., CITY ENGINEER**



**Ruggles & Bohm, P.A.**  
Engineering, Surveying, Land Planning

924 North Main  
Wichita, Kansas 67203  
www.rbkansas.com

(316) 264-8008  
(316) 264-4821 fax  
E-mail: info@rbkansas.com