

# PRIVATE STORM SEWER IMPROVEMENTS CARGILL INNOVATION CENTER LOTS 25-47, WATERMAN'S ADDITION PROJECT NUMBER 2063 PPS (607861)

## GENERAL NOTES

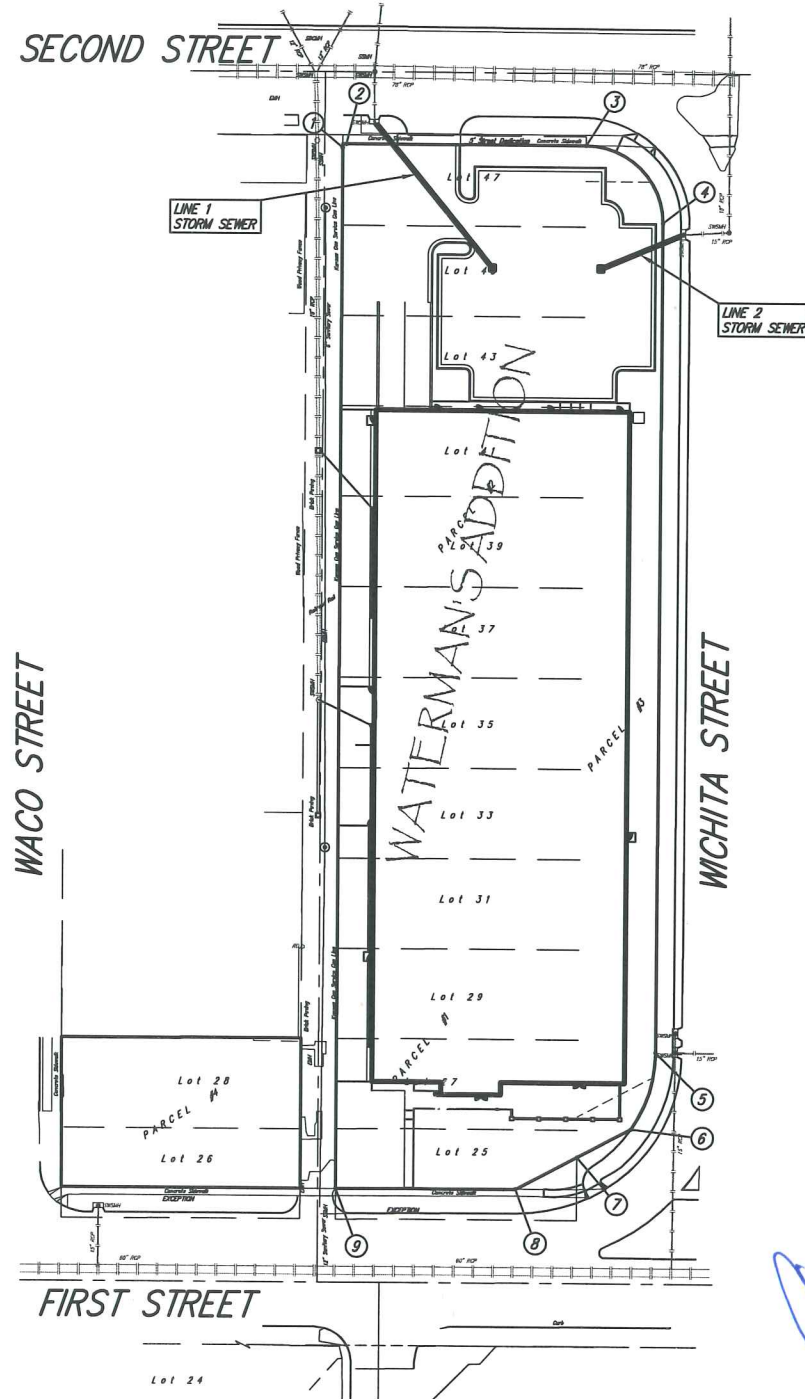
- Contractor will be required to provide a minimum notice of 72 hours to utility companies prior to starting any excavation as follows:  
  

Kansas One-Call	687-2470
-----------------	----------

The Contractor must notify the following in case of an emergency:

Cox Communications	262-0661
Kansas Gas Service	383-8600
Westar Energy	383-8600
AT&T	1-800-286-8313
City of Wichita Water Utility	268-6000
Black Hills Energy	1-800-303-0357
- Existing utilities and their location, as shown on the plans, represent the best information obtainable for design. Location information has been obtained from the various utility companies and is either from company record drawings or company-provided field locations. The Contractor will be required to work around existing utilities within the right-of-way which do not conflict with proposed construction.
- A saw cut of the full depth of existing surface courses or pavement thickness shall be provided at locations where proposed construction abuts an existing surface course or pavement for which partial removal of that surface or pavement is required, except when such saw cuts are within three (3) feet of an existing joint the limits of removal shall be extended to the existing joint.
- This project is limits of a larger project which will include building construction. A Storm Water Pollution Prevention Plan is on file with the Kansas Department of Health and Environment.
- This project is to be constructed in accordance with City of Wichita Standard Specifications for the Construction of City Projects and Policy on Construction of Infrastructure by Private Contract.
- No work shall begin on this project before required bonds are submitted to the City of Wichita, and the project inspector has been notified.
- All areas of public R/W disturbed by construction of this project are to be restored in accordance with Administrative Regulation AR 6.5 of the City of Wichita.
- One-lane traffic on Second St. in each direction shall be maintained at all times. Traffic control shall be positioned to the latest MUTCD standard specifications.

COORDINATE CONTROL TABLE				
CONTROL NO.	LOCATION	DESCRIPTION	NORTHING	EASTING
1	S OF THE NW CORNER OF LOT 47, WATERMAN'S ADDITION	(P-K NAIL)	9997.79	9865.82
2	NW CORNER OF LOT 47, WATERMAN'S ADDITION	(V NOTCH)	9999.75	9867.88
3	NE CORNER OF LOT 47, WATERMAN'S ADDITION	(CHISELED CROSS)	10000.00	10000.00
4	NE CORNER OF PARCEL #3, WATERMAN'S ADDITION	(MKEC REBAR)	9957.29	10042.80
5	SE CORNER OF PARCEL #3, WATERMAN'S ADDITION	(MKEC REBAR)	9496.25	10042.33
6	S-SE CORNER OF PARCEL #3, WATERMAN'S ADDITION	(#5 REBAR)	9453.60	10029.08
7	SW CORNER OF PARCEL #3, WATERMAN'S ADDITION	(#4 REBAR)	9453.60	10029.08
8	SE CORNER OF LOT 25, WATERMAN'S ADDITION	(V NOTCH)	9419.73	9865.14
9	SW CORNER OF LOT 25, WATERMAN'S ADDITION	(1/2" IP)	9419.69	9865.33



## INDEX OF SHEETS

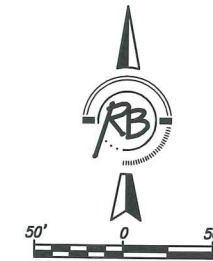
(CITY SUBMITTAL INDEX)

- TITLE SHEET
- STORM SEWER PLAN & PROFILE
- DROP INLET DETAILS
- INLET MODIFICATION DETAIL

## BENCHMARKS

**BENCHMARK #1:** "X" CHISELED ON TOP OF SIDEWALK.  
ELEVATION = 1302.28 (NAVD88)

**BENCHMARK #2:** CHISELED SQUARE ON TOP OF SIDEWALK.  
ELEVATION = 1302.00 (NAVD88)



APPROVED AS NOTED  
BY CITY ENGINEER OF WICHITA

Sanitary Sewer: James L. Armour

Storm Sewer: James L. Armour

Driveway Approaches: 8-12-10

Water Mains: \_\_\_\_\_

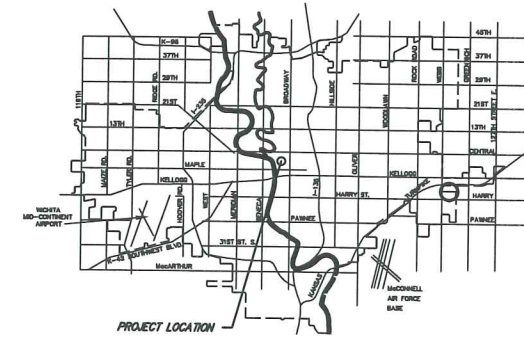
Paving: \_\_\_\_\_

NOTE TO CONTRACTORS

Inspection and testing for this project are to be provided by a Licensed Consulting Engineering Firm under contract with the Owner/Developer. Said inspection to be in accordance with the City of Wichita standard construction engineering practices and certified by a Licensed Professional Engineer. No work shall be performed in dedicated easements or public right-of-way by the Contractor without such inspection, nor shall any work be commenced without written authorization by the City Engineer.

## AS BUILTS

Contractor: McCullough Excavation, Inc.  <span style="color: red; font-weight: bold;">02/07/2011</span>	Project Inspector: Tom Jones  516 S. Market, Wichita, KS 67202 (316)264-0242
---	---



VICINITY MAP

**CITY OF WICHITA, KANSAS**  
**JAMES L. ARMOUR, P.E., CITY ENGINEER**



**Ruggles & Bohm, P.A.**  
 Engineering, Surveying, Land Planning  
 924 North Main (316) 264-8008  
 Wichita, Kansas 67203 (316) 264-4621 fax  
 www.rbkansas.com E-mail: info@rbkansas.com

Ruggles & Bohm  
 1700 E. BRENTWOOD BLVD  
 SUITE 100  
 ST. LOUIS, MISSOURI 63144  
 (314) 983-0715 (F) 314-983-0714  
 WWW.RBENGINEERING.COM

GMA ENGINEERING INC.  
 ARCHITECTURAL DESIGN SERVICES  
 A DIVISION OF ARCO NATIONAL CONSTRUCTION  
 1700 E. BRENTWOOD  
 SUITE 100  
 ST. LOUIS, MISSOURI 63144  
 (314) 983-0715 (F) 314-983-0714  
 WWW.GMAENGINEERING.COM

ARCO  
 National Construction Company, Inc.  
 1700 E. BRENTWOOD BLVD  
 SUITE 100  
 ST. LOUIS, MISSOURI 63144  
 (314) 983-0715 (F) 314-983-0714  
 WWW.ARCONATIONAL.COM

CONSULTING ENGINEERS  
 Ruggles & Bohm  
 1700 E. Brentwood Blvd  
 Suite 100  
 St. Louis, Missouri 63144  
 (314) 983-0715 (F) 314-983-0714  
 www.rbkansas.com

ELECTRICAL  
 Ruggles & Bohm  
 1700 E. Brentwood Blvd  
 Suite 100  
 St. Louis, Missouri 63144  
 (314) 983-0715 (F) 314-983-0714  
 www.rbkansas.com

PLUMBING  
 Ruggles & Bohm  
 1700 E. Brentwood Blvd  
 Suite 100  
 St. Louis, Missouri 63144  
 (314) 983-0715 (F) 314-983-0714  
 www.rbkansas.com

FREE PROTECTION  
 Ruggles & Bohm  
 1700 E. Brentwood Blvd  
 Suite 100  
 St. Louis, Missouri 63144  
 (314) 983-0715 (F) 314-983-0714  
 www.rbkansas.com

PROPOSED INNOVATION CENTER FOR:  
**CARGILL MEAT SOLUTIONS CORPORATION**  
 WICHITA, KANSAS

SWS COVER

JOB NO:  
 Add in Project Info

DRAWN BY:  
 Add in Sheet  
 ISSUE DATE:  
 05.28.2010

REVISIONS: # DATE

SHEET NUMBER  
**C3.1**