

9,100 Square Foot Facility
130'-4" Front x 71'-2" Deep

Dollar General Corporation

Retail Store

Project Number
2070 PPS (607861)

Wichita, Kansas

47th St. S (Oaklawn)

GENERAL NOTES:

- Contractor will be required to provide notice to utility companies a minimum of forty-eight (48) hours prior to any excavation, as follows:
Kansas One-Call 687-2470
The Contractor must notify the following in case of an emergency:
Cox Communications 262-4270
Kansas Gas Service Company 1-888-463-4950
Westar Energy (Electric) 363-6650
Black Hills Energy (Gas) 1-800-303-0359
A&E 1-800-286-6311
City of Wichita Water Dept. (Water) 262-6000
City of Wichita Sewer Maint. (SS) 262-6000
City of Wichita Storm Sewer Maint. 262-6000
City of Wichita Traffic Maint. 268-4034
- All disturbed P/W areas not intended for pavement or sidewalk construction shall be seeded with Kansas Premium Fescue Blend at a rate of 8 lb./1000 Sq. Ft., fertilized with a 16-20-6 ratio at a rate of 4 lb./1000 Sq. Ft., and mulched with Prairie Hay at a rate of 92 lb./1000 Sq. Ft. Mulch shall be "patted" with forks or punched into soil to reduce loss due to wind.
- Utility service lines, poles, valve boxes, meters, et cetera are to be adjusted as necessary by others prior to construction unless the plans specifically call for their adjustment by the Contractor or unless the plans specifically identify a utility to be adjusted by its owner during construction. Existing utilities and their locations, as shown on the plans represent the best information obtainable for design and shall be field verified. The contractor will be required to work around existing utilities within the right-of-way which do not conflict with proposed construction.
- All sanitary sewers and appurtenances shall be installed in accordance with the most recent edition of City of Wichita Kansas Standard Specifications for the Construction of City Projects.
- The Contractor shall give all property owners/tenants of developed property directly abutting the construction of this project a minimum of five (5) days notice prior to start of construction.
- Contractor shall not start work on the project until the project inspector is assigned to the project and is present on the site. Contractor shall not start on the project until all necessary bonds and permits have been obtained. Bonds may include but are not limited to: Statutory, Performance & Maintenance for areas in public right-of-way and easement. For projects within the City of Wichita contact Tom Mason (268-4574). Any work done without inspection will be required to be uncovered for inspection.
- Rubble from the removal of miscellaneous structures and excess excavation which is to be wasted shall be disposed of on sites to be provided by the Contractor. These sites shall be approved by the Engineer as to suitability, appearance and site location. Locations that, in the opinion of the Engineer, will leave an unsightly appearance will not be approved. All disposal sites must be approved by the Kansas Department of Health and Environment. Material either stockpiled or disposed of in a flood plain would require a Kansas State Board of Agriculture permit. Any material dumped in waters of the United States or wetlands is subject to U.S. Corps of Engineers permitting regulations. Any material buried or stockpiled beyond approved construction limits would require additional archaeological investigations unless buried in a previously approved borrow location.
- The Contractor shall be responsible for maintaining continuous flow of sewage through construction. Contractor's proposed method for maintaining sewage flow shall be approved by the Engineer. Cost of maintaining flow of sewage through construction will not be paid for directly and this cost shall be considered as subsidiary to the other pay items of work.
- Contractor shall furnish the inspector with a copy of the manufacturer's certification for any pipe used on this project after completion of pipe installation. The engineer will not certify the project to the city until pipe certification has been received.

DRAWING NUMBER	REVISION DATE	DRAWING TITLE
C0.1		COVER SHEET
C1.0		EXISTING CONDITIONS
C2.1		SITE LAYOUT AND UTILITY PLAN
C3.1		GRADING, DRAINAGE & EROSION CONTROL PLAN
C4.1		SITE DETAILS
C4.2		SITE DETAILS
C5.1		SANITARY PLAN & PROFILE
C6.0		PRIVATE PROJECT WATER COVER SHEET
C6.1		PRIVATE PROJECT WATER SITE LAYOUT & UTILITY PLAN
C6.2		PRIVATE PROJECT WATER PLAN & PROFILE

APPROVED AS NOTED
BY CITY ENGINEER OF WICHITA

Sanitary Sewers *Julianne Kellman* 10/26/10

NOTE TO CONTRACTORS

Inspection and testing for this project is to be provided by a Licensed Consulting Engineering Firm under contract with the Owner/Developer. Said inspection to be in accordance with the City of Wichita standard construction engineering practices and certified by a Licensed Professional Engineer. No work shall be performed in dedicated easements or public right-of-way by the Contractor without such inspection nor shall any work be commenced without written authorization by the City Engineer. All Construction and Materials shall comply with the City of Wichita Specifications and Standards (on file and available in the City Engineer's Office).



WICHITA, KANSAS VICINITY MAP
NOT TO SCALE

DEVELOPER

GBT Realty Corporation
201 Summit View Drive, Suite 110
Brentwood, Tennessee 37027
Development Contact: Bob Gage
Email: bgage@gbtrealty.com
Construction Contact: Don Robinson
Email: drobinson@gbtrealty.com
Phone: (615)370-0670
Fax: (615)515-4065

CIVIL ENGINEER

GRESHAM SMITH AND PARTNERS
1400 Nashville City Center, 511 Union Street
Nashville, Tennessee 37219
Contact: Michael Jenkinson
Phone: (615)770-8493
Fax: (866)712-3370
Email: michael.jenkinson@gspnet.com

AS BUILTS

Contractor: Mies Construction
Project Inspector: Larry Gann

3/30/2011

kemiller engineering
516 S. Market, Wichita, KS 67202 (316)264-0242

10.08.10	COUNTY PLAT COMM. 10 R.O.W.
10.25.10	CITY COMMENTS (SANITARY)

Stub
Release Date: 4/15/2011
: APRos 4/15/2011



ARCHITECTURE
PLANNING
ENGINEERING
GRAPHICS

165 BROADWAY
4TH FLOOR
NASHVILLE, TN 37201
(615) 244-8178
(615) 244-8141
www.mmarch.com



MICHAEL DUANE HUNKLER
REG.# 15263



511 Union Street
1400 Nashville City Center
Nashville, Tennessee 37219
Phone: (615)770-8100
GSP #27761.22



GBT REALTY CORPORATION
271 Summit Drive Suite 110
Brentwood, TN 37027
615-370-0670
Fax: 615-515-4065
www.gbtrealty.com



STORE #:
WICHITA, KS AT OAKLAWN

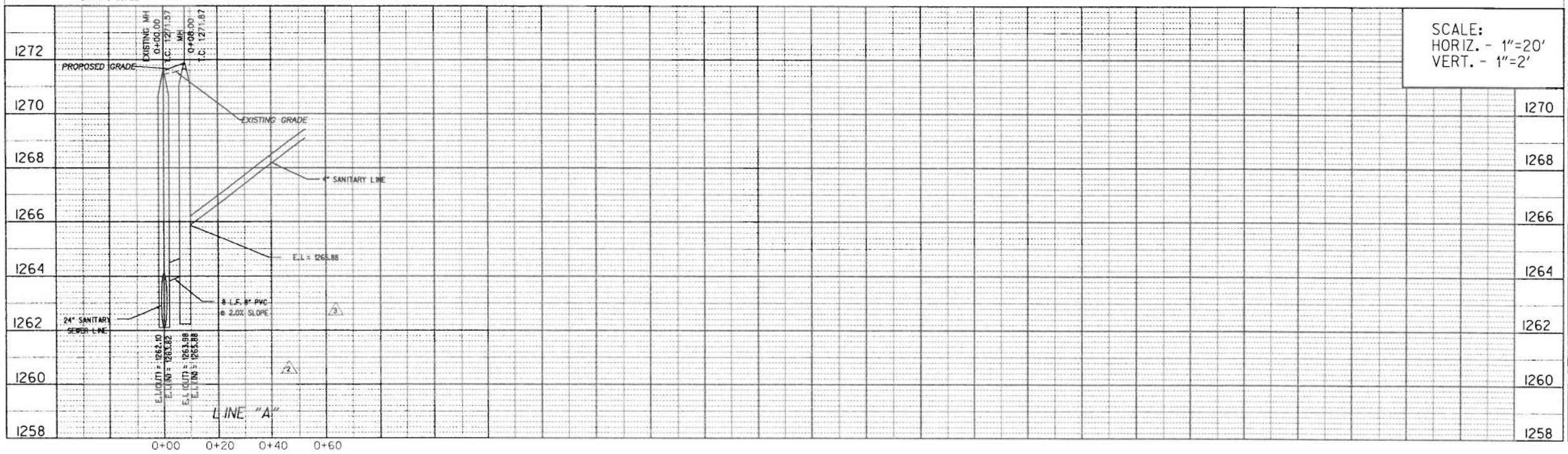
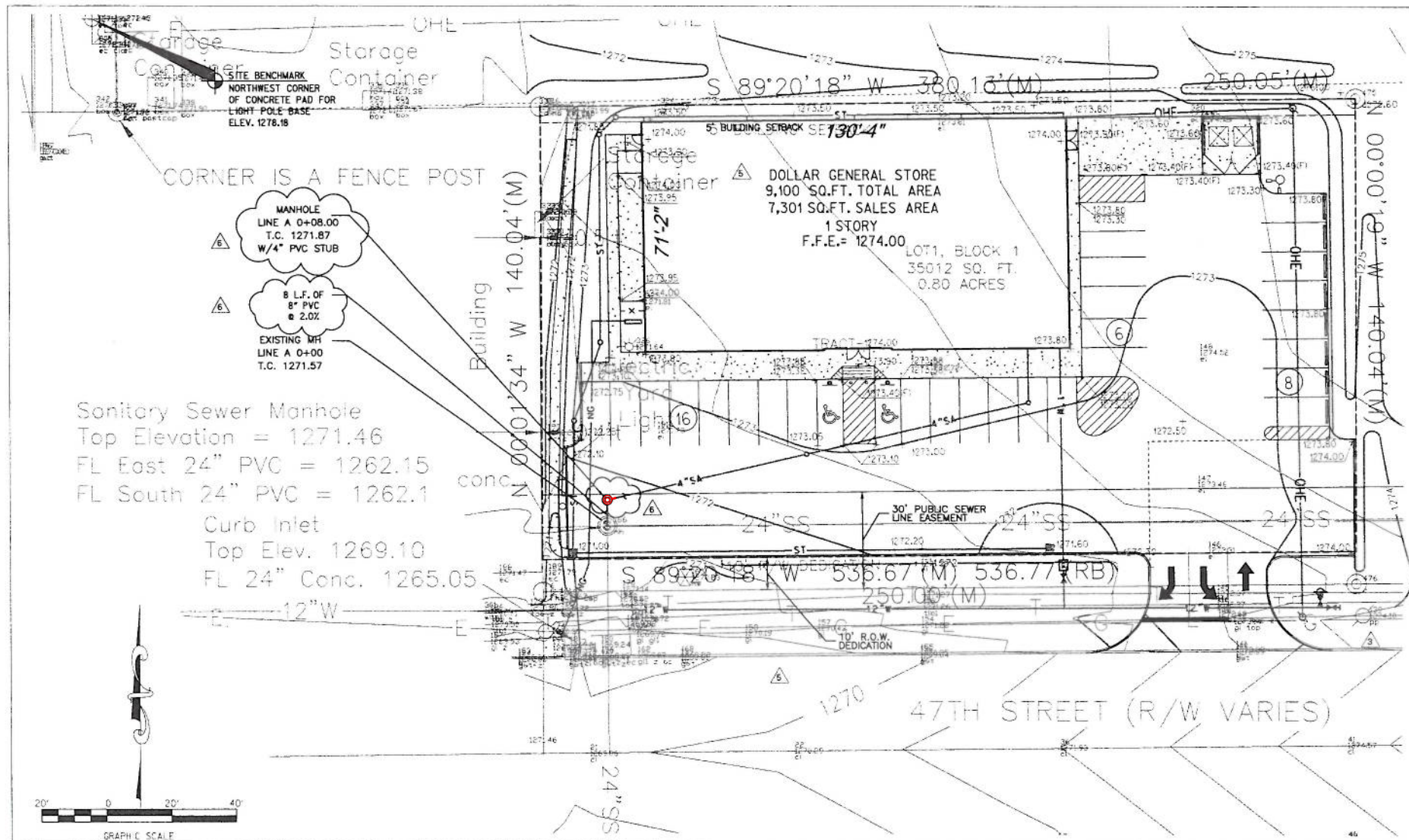
07.22.10
MJM 10168

07.30.10	CITY COMMENTS
08.09.10	CITY COMMENTS
09.22.10	PUBLIC WATER EXT.

COVER SHEET

C0.1

ARCHITECTS
SEAL
CONSULTANT
OWNER
LOCATION
DATE
SHEET



Contractor:
 Mies
 Construction

Project Inspector:
 Larry Gann

AS BUILTS



▲	COUNTY PLAT COMM. 10' RW
	10.08.10
▲	CITY COMMENTS (SAN.)
	10.25.10



ARCHITECTURE
 PLANNING
 ENGINEERING
 GRAPHICS

165 BROADWAY
 4TH FLOOR
 NASHVILLE, TN 37201
 (615) 244-8178
 (615) 244-8144
 www.mjmarc.com



CIVIL ENGINEER
 GRESHAM SMITH AND PARTNERS

511 Union Street
 1400 Nashville City Center
 Nashville, Tennessee 37219
 Phone: (615)770-8100
 CSP #27761.22



STORE #:
**WICHITA,
 KS AT
 OAKLAWN**

07.22.10	MJM 10168
▲	CITY COMMENTS
	07.30.10
▲	CITY COMMENTS
	08.09.10
▲	CITY COMMENTS
	09.22.10

This drawing and the design shown is the property of the architect. The reproduction, copying or use of this drawing without their written consent is prohibited and any infringement will be subject to legal action.

SANITARY LINE "A"
 PLAN & PROFILE
 PUBLIC WATER EXT.
 09.23.10
C5.1

ARCHITECTS
 SEAL
 CONSULTANT
 OWNER
 LOCATION
 DATE
 SHEET