

WL No. 1, BL Sta. 10+34.68, 30.05' Lt. =
 WL No. 1, Sta. 1+05.00
 1 - Fire Hydrant Assembly
 L = 4'
 Top of Valve Box Elev. = Match Exist.
 FH Bury Elev. = 106.86

WL No. 1, BL Sta. 10+29.69, 32.31' Lt. =
 WL No. 1, Sta. 1+00.
 Existing Water Line
 Remove Existing 8" Cap
 Connect to Exist. 8" Pipe
 Provide Couplers and Adapters as Required
 1 - 6" MJ Plug in Existing Valve (S)

CAUTION!!!
 8" SANITARY SEWER
 CONSTRUCT 20 LF REINFORCED CONCRETE
 ENCASUREMENT ON EXIST. SAN. SEWER.
 ENCASUREMENT TO BE CENTERED ON PROPOSED
 8" WATER LINE.

WL No. 1, BL Sta. 10+73.86, 32' Lt. =
 WL No. 1, Sta. 1+44.23
 Horiz. Defl. = 2'59"20" (Lt.)

WL No. 1, BL Sta. 13+65.08, 32' Lt. =
 WL No. 1, Sta. 4+35.42
 Horiz. Defl. = 3'00"00" (Rt.)
 1 - 2" Service Outlet Assembly (N)
 5' - 2" Pipe (N)
 1 - 2" 90° Bend
 5' - 2" Pipe (E)

WL No. 1, BL Sta. 13+70.09, 37' Lt. =
 Existing Water Line
 1 - 2" 90° Bend
 Connect to Existing 2 1/2" PVC Pipe (N)
 1 - 2 1/2" Cap (S)

WL No. 1, BL Sta. 17+14.66, 31.29' Lt. =
 WL No. 1, Sta. 7+85.11
 1 - Fire Hydrant Assembly
 L = 4'
 Top of Valve Box Elev. = Match Exist.
 FH Bury Elev. = 106.88

WL No. 1, BL Sta. 17+29.78, 30.49' Lt. =
 WL No. 1, Sta. 8+00.15
 1 - 8" x 8" DI CL MJ Tee (Rotated)
 5' - 8" DI CL Pipe (N)
 1 - 8" 90° DI CL MJ Bend
 5' - 8" DI CL Pipe (E)

WL No. 1, BL Sta. 17+34.78, 35.24' Lt. =
 Existing Water Line
 1 - 6" x 6" Tapping Sleeve
 1 - 6" Tapping Valve
 1 - 6" Valve Box
 (To be furnished and set by
 City of Wichita Water Department)
 Top of Valve Box Elev. = Match Existing
 Cut & Cap Exist. 6" Pipe (S)

WL No. 1, BL Sta. 17+39.21, 30' Lt =
 WL No. 1, Sta. 8+08.59
 Horiz. Defl. = 3'00"00" (Lt.)
 1 - 8" x 8" DI CL MJ Tee
 1 - 8" Valve Assembly (S)
 1 - 8" Valve Assembly (E)
 Top Of Valve Box Elev. = Match Existing

WL No. 1, BL Sta. 17+39.21, 30' Lt. =
 WL No. 1, Sta. 8+08.59
 Match Line, See Sheet 5 for Continuation.

WL No. 1, BL Sta. 17+67.32 =
 WL No. 3, BL Sta. 10+39.83

NOTES:

- UNLESS OTHERWISE INDICATED, DIMENSIONS ARE MEASURED TO CENTERLINE OF FITTINGS IN PLAN VIEW AND TOP OF PIPE IN PROFILE VIEW.
- WL NO. 1 BASELINE = CENTERLINE OF MCCORMICK AVENUE, RIGHT-OF-WAY.
- REFER TO SHEET 2, NOTE NO. 8, FOR DIRECTIONAL DRILLING REQUIREMENTS.

THE ESTIMATED PAVT. REMOVAL/REPLACEMENT QUANTITIES SHOWN ON ALL PLAN SHEETS ARE FOR INFORMATION ONLY.

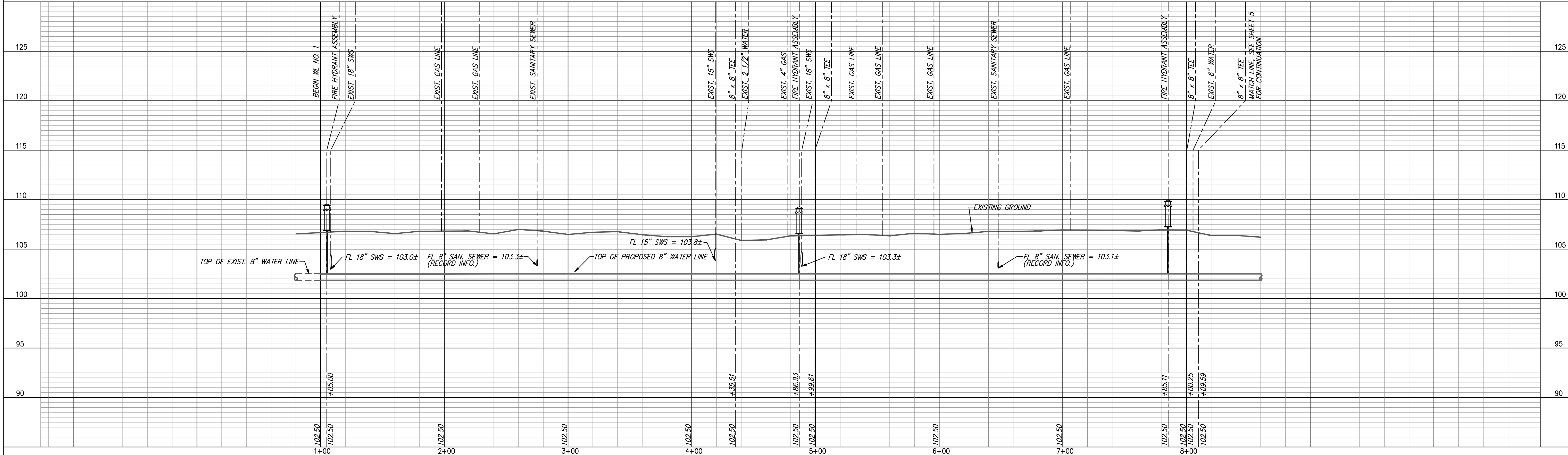
- REMOVE & REPLACE WHEELCHAIR RAMP, THIS SHEET = 2 EA
- REMOVE & REPLACE CONCRETE SIDEWALK IN KIND, THIS SHEET = 9 LF
- REMOVE & REPLACE CONCRETE DRIVE IN KIND, THIS SHEET = 56 LF
- REMOVE & REPLACE CONCRETE PAVEMENT IN KIND, THIS SHEET = 70 LF

FIRE HYDRANTS REQUIRED			
STATION	BURY LINE ELEVATION	TOP OF PIPE ELEVATION	FIRE HYDRANT BURY REQUIRED*
WL NO. 1, STA. 1+05.00	106.88	102.50	5.00'
WL NO. 1, STA. 4+86.93	106.38	102.50	4.50'
WL NO. 1, STA. 7+85.11	106.88	102.50	5.00'

(FOR FIRE HYDRANT ASSEMBLY, SEE DETAIL, SHEET 27)

RESTRAIN POLE DURING CONSTRUCTION (BY WESTAR). CONTRACTOR SHALL CONTACT WESTAR (RANDY TRUITT, 261-6512), TWO WEEKS PRIOR TO WORKING IN THIS AREA.

WATER LINE NO. 1



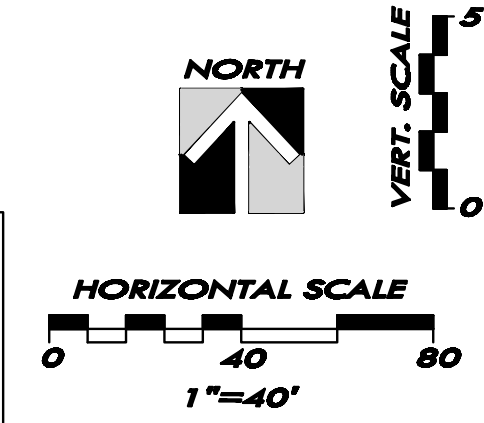
**WATER LINE NO. 1
 PLAN AND PROFILE**

McCormicks Water Main Replacement

City of Wichita, Sedgwick County, Kansas

PROJECT NO.	DATE	BY	REVISIONS
06-228	2-15-07	AMP	

YOUNG & ASSOCIATES, P.A.
 Civil and Environmental Engineers
 100 S. Georgia, Derby, KS 67037
 Tel: (316)788-2552 Fax: (316)788-4408 Email: young@yandem.com



- LEGEND**
- PP UTILITY POLE
 - LP LIGHT POLE
 - DM DEAD MAN
 - WM WATER METER
 - WV WATER VALVE
 - GV GAS VALVE
 - SS MH SANITARY SEWER MANHOLE
 - SWS MH STORM SEWER MANHOLE
 - PAVEMENT REMOVAL AND REPLACEMENT, TYPICAL ALL SHEETS