

- LEGEND**
- PP UTILITY POLE
  - LP LIGHT POLE
  - DM DEAD MAN
  - WM WATER METER
  - WV WATER VALVE
  - GV GAS VALVE
  - SS MH SANITARY SEWER MANHOLE
  - SWS MH STORM SEWER MANHOLE

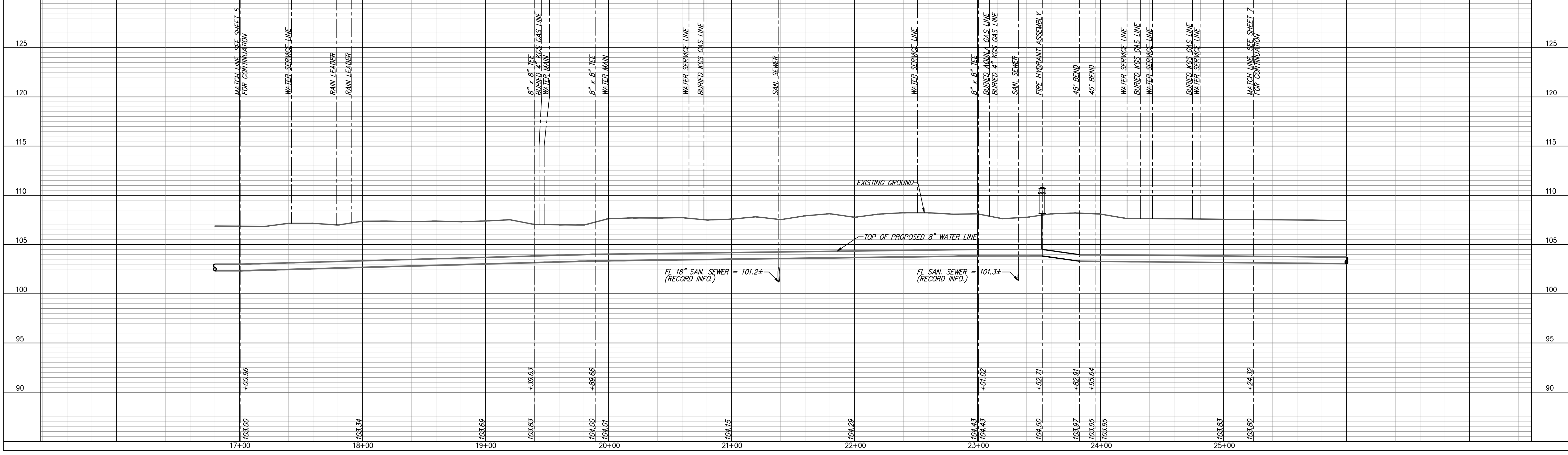
FIRE HYDRANTS REQUIRED			
STATION	BURY LINE ELEVATION	TOP OF PIPE ELEVATION	FIRE HYDRANT BURY REQUIRED*
WL NO. 1, STA. 23+52.71	108.38	104.50	4.5'

(FOR FIRE HYDRANT ASSEMBLY, SEE DETAIL, SHEET 27)

- NOTES:**
- UNLESS OTHERWISE INDICATED, DIMENSIONS ARE MEASURED TO CENTERLINE OF FITTINGS IN PLAN VIEW AND TOP OF PIPE IN PROFILE VIEW.
  - WL NO. 1 BASELINE = CENTERLINE OF MCCORMICK AVENUE RIGHT-OF-WAY.
  - REFER TO SHEET 2, NOTE NO. 8, FOR DIRECTIONAL DRILLING REQUIREMENTS.

**WATER LINE NO. 1**

REMOVE & REPLACE WHEELCHAIR RAMP, THIS SHEET = 4 EA  
 REMOVE & REPLACE CONCRETE SIDEWALK IN KIND, THIS SHEET = 8 LF  
 REMOVE & REPLACE CONCRETE DRIVE IN KIND, THIS SHEET = 46 LF  
 REMOVE & REPLACE CONCRETE PAVEMENT IN KIND, THIS SHEET = 333 LF



**YOUNG & ASSOCIATES, P.A.**  
 Civil and Environmental Engineers  
 100 S. Georgia, Derby, KS 67037  
 Tele: (316) 788-2552 Fax: (316) 788-4408 Email: young@yandemah.com

**PROJECT NO. 06-228**  
 DATE: 2-15-07  
 DRAWN: DMS  
 DESIGNED: DAS  
 CHECKED: GRY  
 APPROVED:

**REVISIONS**

NO.	DATE	COMMENTS	BY	APP.

**WATER LINE NO. 1**  
**PLAN AND PROFILE**  
**McCormicks Water Main Replacement**  
 City of Wichita, Sedgwick County, Kansas

SHEET  
 6  
 of 37