

WL No. 2, Bl. Sta. 19+06.48, 32' Lt. =
 WL No. 2, Sta. 10+00
 Match Line, See Sheet 9 for Continuation.

WL No. 2, Bl. Sta. 19+38.54, 32' Lt. =
 WL No. 2, Sta. 10+32.06
 Install 1" Long Service to 1720 Stillwell

WL No. 2, Bl. Sta. 19+81.01, 32' Lt. =
 WL No. 2, Sta. 10+74.53
 1 - 8" DI CL MJ 45° Bend.
 Horiz. Defl. = 45'00"00"

WL No. 2, Bl. Sta. 19+87.01, 26' Lt. =
 WL No. 2, Sta. 10+83.01
 1 - 8" DI CL MJ 45° Bend.
 Horiz. Defl. = 45'00"00"

WL No. 2, Bl. Sta. 23+48.42, 26' Lt. =
 WL No. 2, Sta. 14+44.43
 1 - 8" x 8" DI CL MJ Tee (Rotated)
 5' - 8" DI CL Pipe (E)
 1 - 8" 90° DI CL MJ Bend
 5' - 8" DI CL Pipe (S)
 1 - 8" Valve Assembly (N)
 Top of Valve Box = Match Existing

WL No. 2, Bl. Sta. 23+53.42, 31' Lt. =
 Existing Water Line
 1 - 8" x 8" Tapping Sleeve
 1 - 8" Tapping Valve
 1 - 6" Valve Box
 (To be furnished and set by
 City of Wichita Water Department)
 Top of Valve Box Elev. = Match Existing

WL No. 2, Bl. Sta. 28+04.37, 32' Lt. =
 WL No. 2, Sta. 18+92.01
 1 - Fire Hydrant Assembly
 L = 4'
 Top of Valve Box Elev. = Match Existing
 FH Bury Elev. = 105.88
 1 - 8" MJ Plug
 End WL No. 2

Close 2 - 1" Corp Stops at approximately
 14' S. & 7' W. of Fire Hydrant & Cut Leads.

WL No. 2, Bl. Sta. 23+60.09 =
 Walker Bl. Sta. 10+08.48

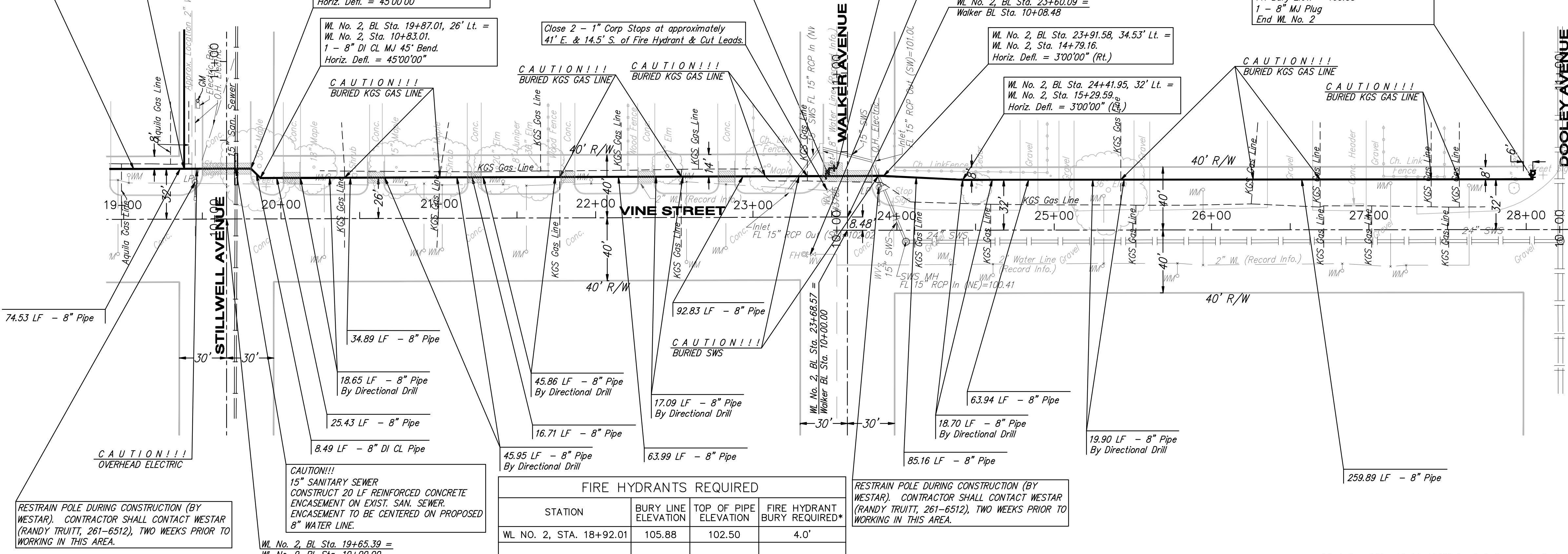
WL No. 2, Bl. Sta. 23+91.58, 34.53' Lt. =
 WL No. 2, Sta. 14+79.16
 Horiz. Defl. = 3'00"00" (Rt.)

WL No. 2, Bl. Sta. 24+41.95, 32' Lt. =
 WL No. 2, Sta. 15+29.59
 Horiz. Defl. = 3'00"00" (Lft.)

WL No. 2, Bl. Sta. 28+28.33 =
 WL No. 8, Bl. Sta. 10+00.00



- LEGEND**
- PP UTILITY POLE
 - LP LIGHT POLE
 - DM DEAD MAN
 - WM WATER METER
 - WV WATER VALVE
 - GV GAS VALVE
 - SS MH SANITARY SEWER MANHOLE
 - SWS MH STORM SEWER MANHOLE



FIRE HYDRANTS REQUIRED

| STATION | BURY LINE ELEVATION | TOP OF PIPE ELEVATION | FIRE HYDRANT BURY REQUIRED* |
|-------------------------|---------------------|-----------------------|-----------------------------|
| WL NO. 2, STA. 18+92.01 | 105.88 | 102.50 | 4.0' |

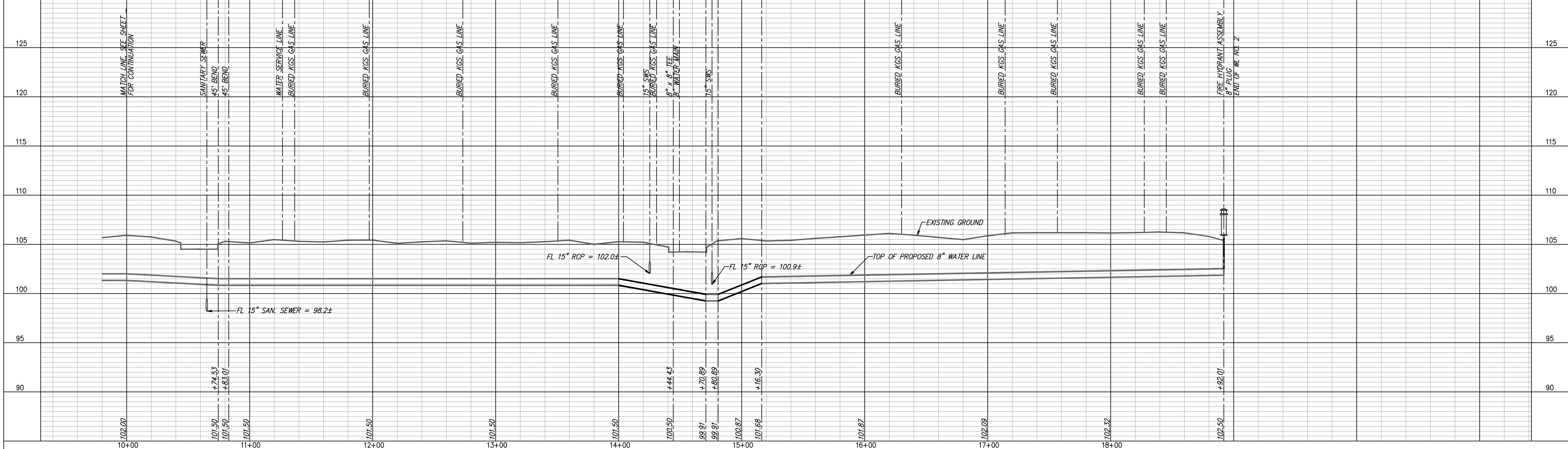
RESTRAIN POLE DURING CONSTRUCTION (BY WESTAR). CONTRACTOR SHALL CONTACT WESTAR (RANDY TRUITT, 261-6512), TWO WEEKS PRIOR TO WORKING IN THIS AREA.

- NOTES:**
- UNLESS OTHERWISE INDICATED, DIMENSIONS ARE MEASURED TO CENTERLINE OF FITTINGS IN PLAN VIEW AND TOP OF PIPE IN PROFILE VIEW.
 - WL NO. 2 BASELINE = CENTERLINE OF VINE STREET RIGHT OF WAY.
 - REFER TO SHEET 2, NOTE NO. 8, FOR DIRECTIONAL DRILLING REQUIREMENTS.

(FOR FIRE HYDRANT ASSEMBLY, SEE DETAIL, SHEET 27)

WATER LINE NO. 2

REMOVE & REPLACE CONCRETE PAVEMENT IN KIND, THIS SHEET = 63 LF
 REMOVE & REPLACE CONCRETE DRIVE IN KIND, THIS SHEET = 61 LF



YOUNG & ASSOCIATES, P.A.
 Civil and Environmental Engineers
 100 S. Geologie, Derby, KS 67037
 Tele: (316)788-2552 ■ Fax: (316)788-4408 ■ Email: young@emaiah.com

**WATER LINE NO. 2
 PLAN AND PROFILE**
 McCormicks Water Main Replacement
 City of Wichita, Sedgwick County, Kansas

PROJECT NO: 06-228
 DATE: 2-15-07
 DRAWN: DMS
 DESIGNED: DAS
 CHECKED: GRY
 APPROVED:

| REVISIONS | BY | DATE | COMMENTS |
|-----------|----|------|----------|
| | | | |
| | | | |