

- LEGEND**
- ⊕ PP UTILITY POLE
 - ⊕ LP LIGHT POLE
 - ↓ DM DEAD MAN
 - ⊙ WM WATER METER
 - ⊕ WV WATER VALVE
 - ⊕ GV GAS VALVE
 - ⊕ SS MH SANITARY SEWER MANHOLE
 - ⊕ SWS MH STORM SEWER MANHOLE

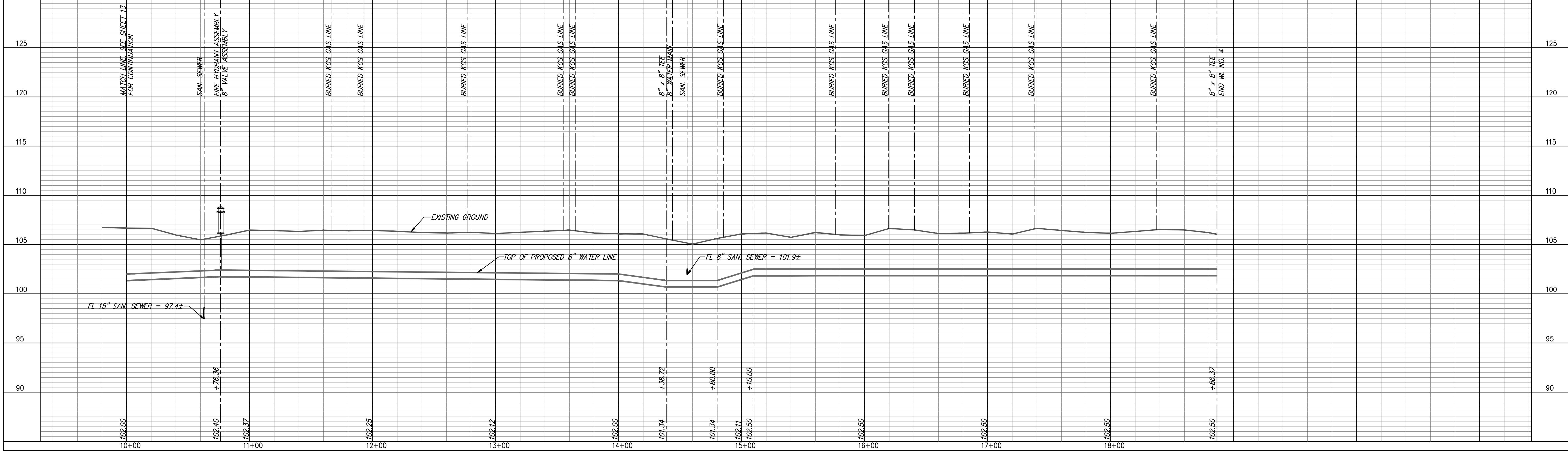
FIRE HYDRANTS REQUIRED			
STATION	BURY LINE ELEVATION	TOP OF PIPE ELEVATION	FIRE HYDRANT BURY REQUIRED*
WL No. 4, STA. 10+76.36	105.78	102.40	4.0'

(FOR FIRE HYDRANT ASSEMBLY, SEE DETAIL, SHEET 27)

WATER LINE NO. 4

REMOVE & REPLACE CONCRETE SIDEWALK IN KIND, THIS SHEET = 2 LF
 REMOVE & REPLACE CONCRETE DRIVE IN KIND, THIS SHEET = 40 LF
 REMOVE & REPLACE CONCRETE PAVEMENT IN KIND, THIS SHEET = 62 LF

- NOTES:**
- UNLESS OTHERWISE INDICATED, DIMENSIONS ARE MEASURED TO CENTERLINE OF FITTINGS IN PLAN VIEW AND TOP OF PIPE IN PROFILE VIEW.
 - WL NO. 4 BASELINE = CENTERLINE OF FERN AVENUE RIGHT OF WAY.
 - REFER TO SHEET 2, NOTE NO. 8, FOR DIRECTIONAL DRILLING REQUIREMENTS.



YOUNG & ASSOCIATES, P.A.
 Civil and Environmental Engineers
 100 S. Georgia, Derby, KS 67037
 Tel: (316) 788-2552 Fax: (316) 788-4408 Email: young@yandemah.com

WATER LINE NO. 4
PLAN AND PROFILE
McCormicks Water Main Replacement
 City of Wichita, Sedgwick County, Kansas

PROJECT NO: 06-228
 DATE: 2-15-07
 DRAWN: DMS
 DESIGNED: DAS
 CHECKED: GRY
 APPROVED:

REVISIONS
 BY
 COMMENTS
 DATE

SHEET
 14
 of 37