

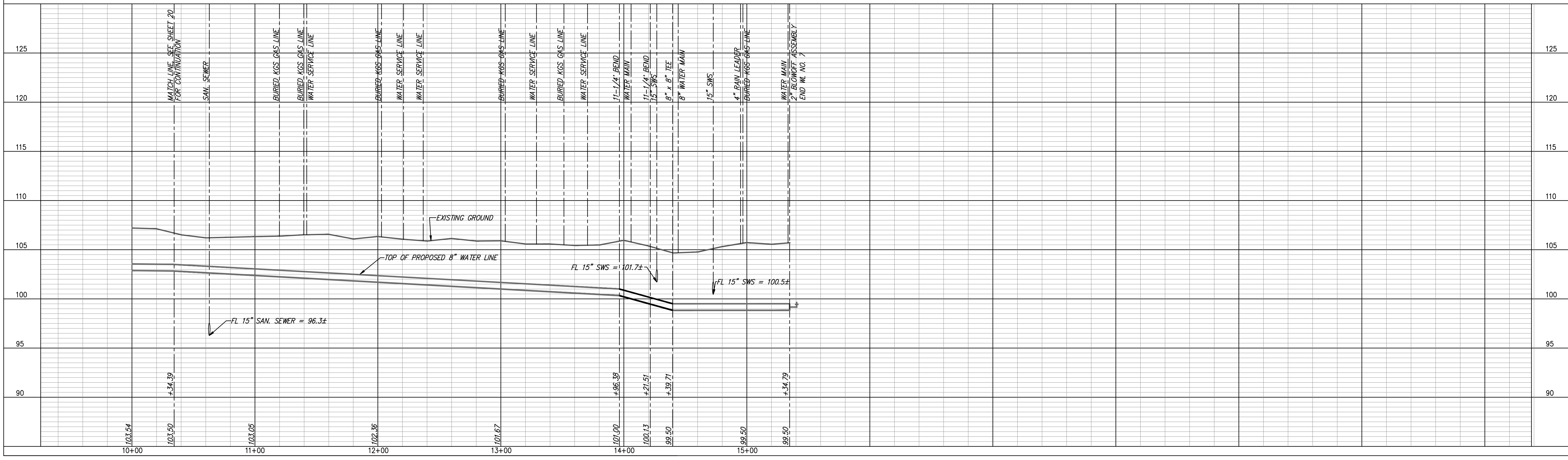
LEGEND

⊕ PP	UTILITY POLE
⊕ LP	LIGHT POLE
↓ DM	DEAD MAN
⊙ WM	WATER METER
⊕ WV	WATER VALVE
⊕ GV	GAS VALVE
⊕ SS MH	SANITARY SEWER MANHOLE
⊕ SWS MH	STORM SEWER MANHOLE

- NOTES:
- UNLESS OTHERWISE INDICATED, DIMENSIONS ARE MEASURED TO CENTERLINE OF FITTINGS IN PLAN VIEW AND TOP OF PIPE IN PROFILE VIEW.
 - WL NO. 7 BASELINE = CENTERLINE OF DODGE AVENUE RIGHT-OF-WAY.
 - REFER TO SHEET 2, NOTE NO. 8, FOR DIRECTIONAL DRILLING REQUIREMENTS.

REMOVE & REPLACE WHEELCHAIR RAMP, THIS SHEET = 3 EA
 REMOVE & REPLACE CONCRETE SIDEWALK IN KIND, THIS SHEET = 34 LF
 REMOVE & REPLACE CONCRETE DRIVE IN KIND, THIS SHEET = 15 LF
 REMOVE & REPLACE CONCRETE PAVEMENT IN KIND, THIS SHEET = 68 LF

WATER LINE NO. 7



**WATER LINE NO. 7
PLAN AND PROFILE**

McCormicks Water Main Replacement

City of Wichita, Sedgwick County, Kansas

PROJECT NO.	DATE	DESIGNED	CHECKED	APPROVED
06-228	2-15-07	DMS	DAS	CRY

YOUNG & ASSOCIATES, P.A.
 Civil and Environmental Engineers
 100 S. Georigle, Derby, KS 67037
 tele: (316) 788-2552 fax: (316) 788-4408 email: young@yandemah.com

Copyright 2006, by Young & Associates, P.A., all rights reserved. Prepared in the United States of America. This drawing is the property of Young & Associates, P.A. and may not be reproduced in any form without the specific written permission of Young & Associates, P.A. This plan and design is the exclusive property of Young & Associates, P.A. The density of the original or digital master shall not constitute a reproduction thereof.