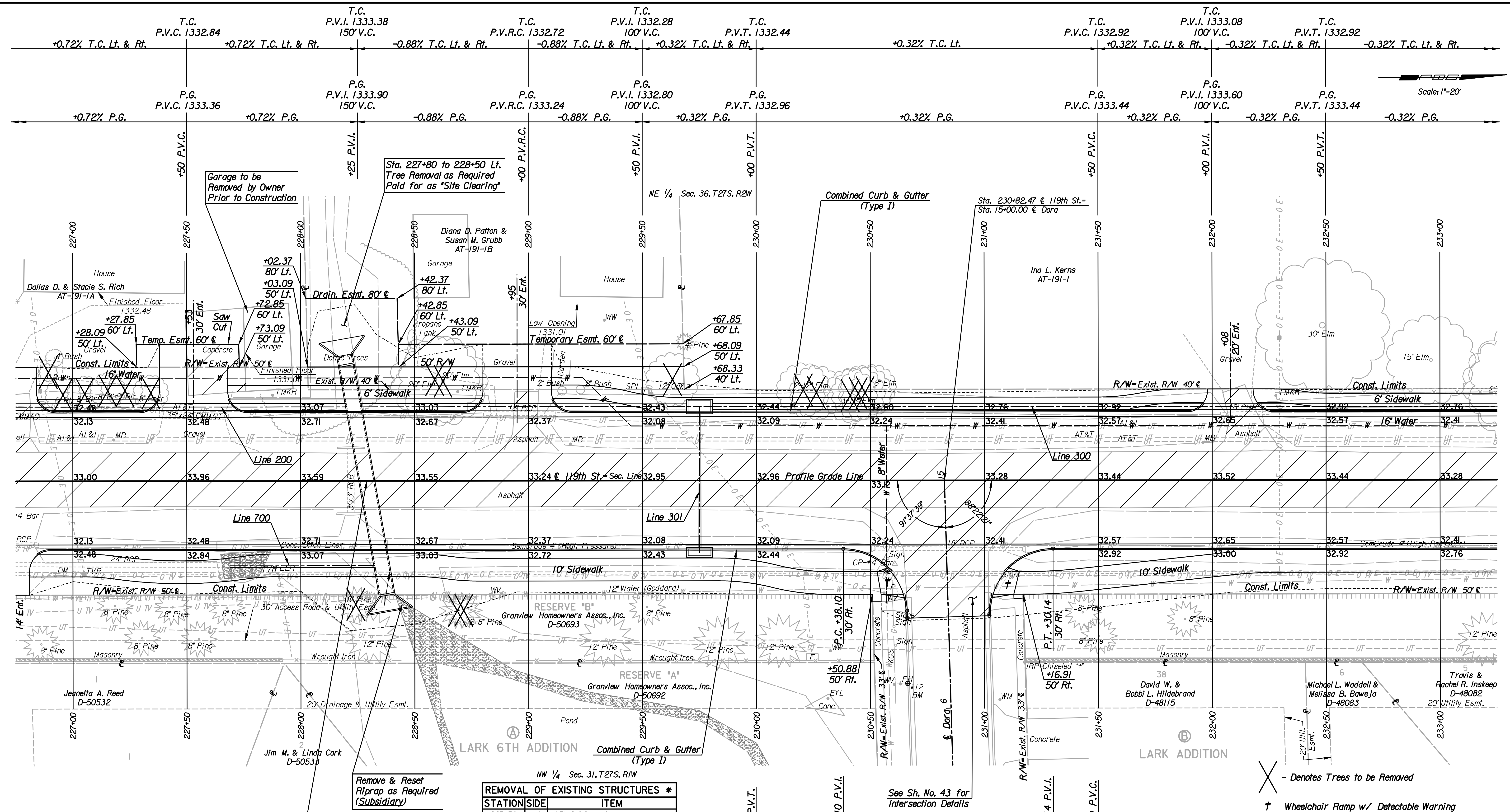


9:37:02 AM  
 Date: 1/21/2011  
 Plotted By: svb  
 FILE: I:\2008\08208\Plan\08208-PL1227.dgn



**Utilities**  
 Gas SemCrude, LP  
 Power Westar Energy  
 Telephone AT&T  
 Television Cox Communications  
 Water City of Goddard  
 Water Wichita Water & Sanitary Sewer Dept.

Sta. 228+29 Construct  
 6'-0" x 4'-0" x 103'-0" RCB  
 (Rotate 10° Lt.)  
 Remove Exist. 3' x 3' RCB  
 See Sh. No. 65-72

REMOVAL OF EXISTING STRUCTURES \*

STATION	SIDE	ITEM
227+53	Lt.	35'x24' CMMAC
227+69	Rt.	24' RC End Section
227+75	Rt.	Stone Riprap
228+01	Rt.	Concrete Ditch Lining
228+22	Cln.	3'x3' RCB
228+96	Lt.	18" RCP
230+58	Rt.	Sign
230+84	Rt.	18" RCP with End Sections
231+07	Rt.	Sign
232+14	Lt.	18" CMP
232+28	Lt.	635 LF Barbed Wire Fc. (North)

\* For Information Only

BM#13 Set Chiseled "W" side Concrete Base to Storm  
 Sewer MH, Just E of E 1/4 Cor. Sec. 36, T27S, R2W  
 34.77' Rt. @ Sta. 226+52.49 Elev. = 1331.57

BM#12 Set Chiseled "W" Top Back of Curb S side of Dora,  
 100'± E of center 119th, adjacent to FH  
 89.12' Rt. @ Sta. 230+66.36 Elev. = 1333.81

X - Denotes Trees to be Removed  
 † Wheelchair Ramp w/ Detectable Warning

119TH ST.  
**PLAN**  
 STA. 227+00 TO STA. 233+00  
 JAMES L. ARMOUR, P.E. - CITY ENGINEER  
 CITY OF WICHITA PROJECT NO. 472-84694  
**Professional Engineering Consultants, P.A.**  
 303 S. TOPEKA - WICHITA, KANSAS 67202  
 316-262-2691 • FAX 316-262-3003

Designed by	JPS	Job No.	08208	Sheet	11 of 149
Drawn by	SVB	Date	Sept., 2010		