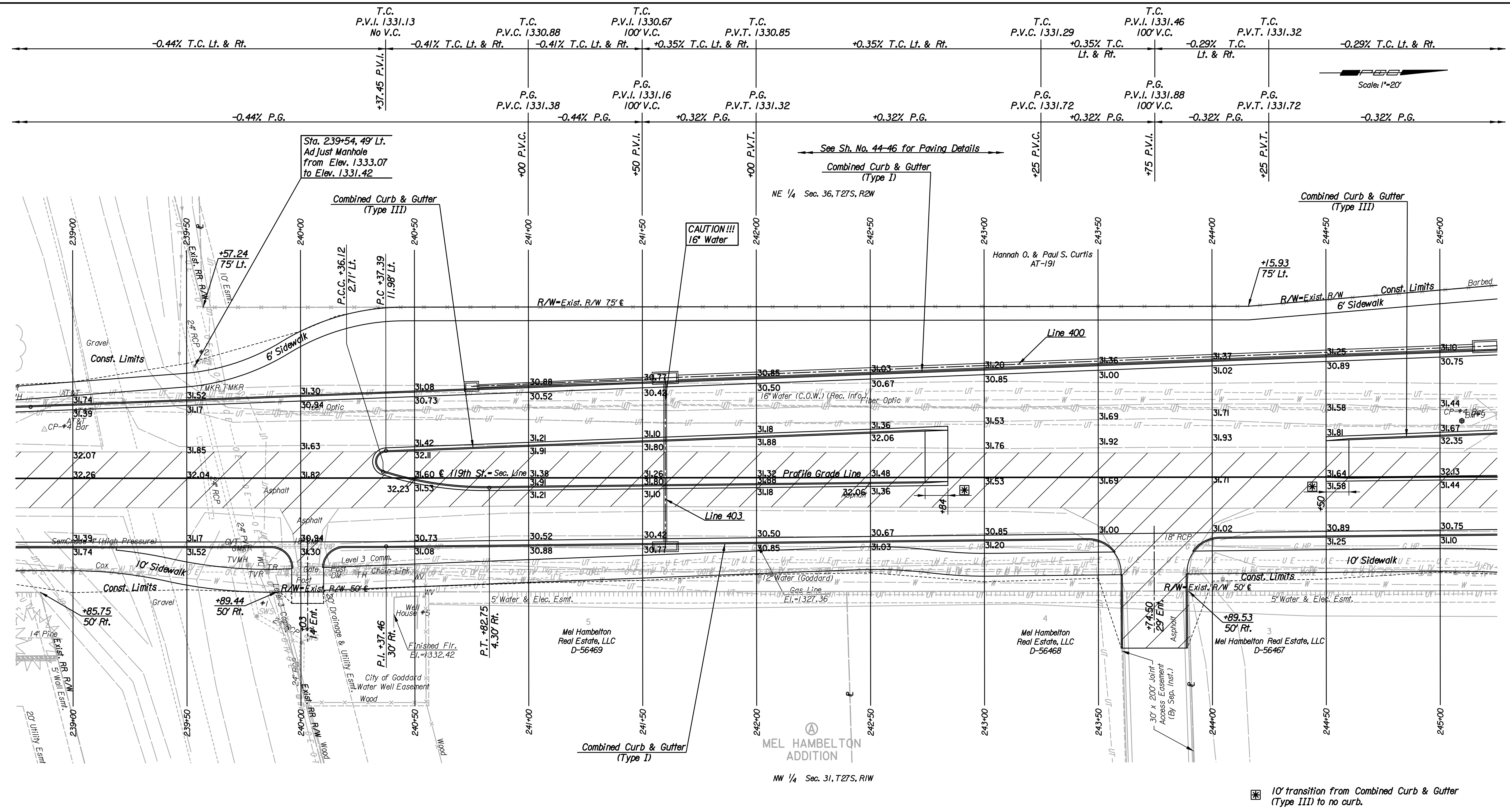


9:59:58 AM  
 Plotted By: svb  
 Date: 1/21/2011  
 FILE: I:\2008\08208\Plan\08208-PL239.dgn



REMOVAL OF EXISTING STRUCTURES *		
STATION	SIDE	ITEM
239+58	Cin.	24" RCP
239+89	Rt.	82 LF Chain Link Fence (N & E)
240+02	Rt.	18" CMP
243+74	Rt.	18" RCP with End Sections

\* For Information Only

- Utilities**
- Gas: SemCrude, LP, Westar Energy
  - Power: AT&T
  - Telephone: Level 3 Communications, LLC
  - Television: Cox Communications
  - Water: City of Goddard, Wichita Water & Sanitary Sewer Dept.

BM\*9 Set 3' "T" Post 0.3'± below surface in W ditch 119th, 775'± S of center Kellogg, 26' E to center Traveled Way 119th, 135' S to center Mel Hamblton Ford Dealer S Entrance 24.62' Lt. & Sta. 245+09.59 Elev. = 1330.70

10' transition from Combined Curb & Gutter (Type III) to no curb.

Revision		By	Date
119TH ST. <b>PLAN</b> <b>STA. 239+00 TO STA. 245+00</b> JAMES L. ARMOUR, P.E. - CITY ENGINEER CITY OF WICHITA PROJECT NO. 472-84694			
<b>Professional Engineering Consultants, P.A.</b> 303 S. TOPEKA - WICHITA, KANSAS 67202 316-262-2691 • FAX 316-262-3003			
Designed by	JPS	Job No.	08208
Drawn by	SVB	Date	Sept., 2010
			Sh. 13 of 149