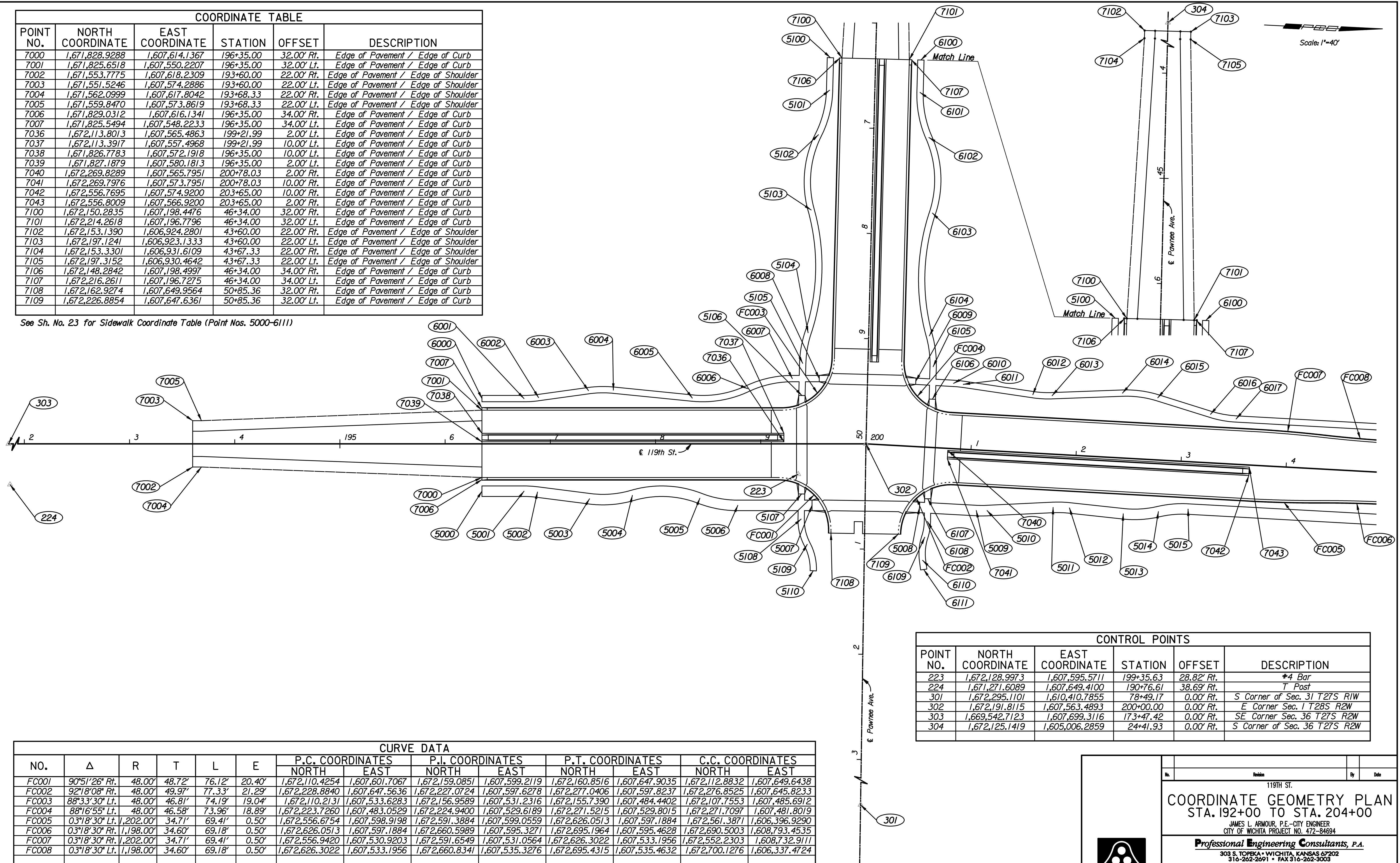


COORDINATE TABLE					
POINT NO.	NORTH COORDINATE	EAST COORDINATE	STATION	OFFSET	DESCRIPTION
7000	1,671,828.9288	1,607,614.1367	196+35.00	32.00' Rt.	Edge of Pavement / Edge of Curb
7001	1,671,825.6518	1,607,550.2207	196+35.00	32.00' Lt.	Edge of Pavement / Edge of Curb
7002	1,671,553.7775	1,607,618.2309	193+60.00	22.00' Rt.	Edge of Pavement / Edge of Shoulder
7003	1,671,551.5246	1,607,574.2886	193+60.00	22.00' Lt.	Edge of Pavement / Edge of Shoulder
7004	1,671,562.0999	1,607,617.8042	193+68.33	22.00' Rt.	Edge of Pavement / Edge of Shoulder
7005	1,671,559.8470	1,607,573.8619	193+68.33	22.00' Lt.	Edge of Pavement / Edge of Shoulder
7006	1,671,829.0312	1,607,616.1341	196+35.00	34.00' Rt.	Edge of Pavement / Edge of Curb
7007	1,671,825.5494	1,607,548.2233	196+35.00	34.00' Lt.	Edge of Pavement / Edge of Curb
7036	1,672,113.8013	1,607,565.4863	199+21.99	2.00' Lt.	Edge of Pavement / Edge of Curb
7037	1,672,113.3917	1,607,557.4968	199+21.99	10.00' Lt.	Edge of Pavement / Edge of Curb
7038	1,671,826.7783	1,607,572.1918	196+35.00	10.00' Lt.	Edge of Pavement / Edge of Curb
7039	1,671,827.1879	1,607,580.1813	196+35.00	2.00' Lt.	Edge of Pavement / Edge of Curb
7040	1,672,269.8289	1,607,565.7951	200+78.03	2.00' Rt.	Edge of Pavement / Edge of Curb
7041	1,672,269.7976	1,607,573.7951	200+78.03	10.00' Rt.	Edge of Pavement / Edge of Curb
7042	1,672,556.7695	1,607,574.9200	203+65.00	10.00' Rt.	Edge of Pavement / Edge of Curb
7043	1,672,556.8009	1,607,566.9200	203+65.00	2.00' Rt.	Edge of Pavement / Edge of Curb
7100	1,672,150.2835	1,607,198.4476	46+34.00	32.00' Rt.	Edge of Pavement / Edge of Curb
7101	1,672,214.2618	1,607,196.7796	46+34.00	32.00' Lt.	Edge of Pavement / Edge of Curb
7102	1,672,153.1390	1,606,924.2801	43+60.00	22.00' Rt.	Edge of Pavement / Edge of Shoulder
7103	1,672,197.1241	1,606,923.1333	43+60.00	22.00' Lt.	Edge of Pavement / Edge of Shoulder
7104	1,672,153.3301	1,606,931.6109	43+67.33	22.00' Rt.	Edge of Pavement / Edge of Shoulder
7105	1,672,197.3152	1,606,930.4642	43+67.33	22.00' Lt.	Edge of Pavement / Edge of Shoulder
7106	1,672,148.2842	1,607,198.4997	46+34.00	34.00' Rt.	Edge of Pavement / Edge of Curb
7107	1,672,216.2611	1,607,196.7275	46+34.00	34.00' Lt.	Edge of Pavement / Edge of Curb
7108	1,672,162.9274	1,607,649.9564	50+85.36	32.00' Rt.	Edge of Pavement / Edge of Curb
7109	1,672,226.8854	1,607,647.6361	50+85.36	32.00' Lt.	Edge of Pavement / Edge of Curb

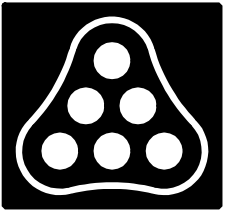
See Sh. No. 23 for Sidewalk Coordinate Table (Point Nos. 5000-6111)



CONTROL POINTS					
POINT NO.	NORTH COORDINATE	EAST COORDINATE	STATION	OFFSET	DESCRIPTION
223	1,672,128.9973	1,607,595.5711	199+35.63	28.82' Rt.	#4 Bar
224	1,671,271.6089	1,607,649.4100	190+76.61	38.69' Rt.	T Post
301	1,672,295.1101	1,610,410.7855	78+49.17	0.00' Rt.	S Corner of Sec. 31 T27S R1W
302	1,672,191.8115	1,607,563.4893	200+00.00	0.00' Rt.	E Corner Sec. 1 T28S R2W
303	1,669,542.7123	1,607,699.3116	173+47.42	0.00' Rt.	SE Corner Sec. 36 T27S R2W
304	1,672,125.1419	1,605,006.2859	24+41.93	0.00' Rt.	S Corner of Sec. 36 T27S R2W

NO.	Δ	R	T	L	E	P.C. COORDINATES		P.L. COORDINATES		P.T. COORDINATES		C.C. COORDINATES	
						NORTH	EAST	NORTH	EAST	NORTH	EAST	NORTH	EAST
						FC001	90°51'26" Rt.	48.00'	48.72'	76.12'	20.40'	1,672,110.4254	1,607,601.7067
FC002	92°18'08" Rt.	48.00'	49.97'	77.33'	21.29'	1,672,228.8840	1,607,647.5636	1,672,227.0724	1,607,597.6278	1,672,277.0406	1,607,597.8237	1,672,276.8525	1,607,645.8233
FC003	88°33'30" Lt.	48.00'	46.81'	74.19'	19.04'	1,672,110.2131	1,607,533.6283	1,672,156.9589	1,607,531.2316	1,672,155.7390	1,607,484.4402	1,672,107.7553	1,607,485.6912
FC004	88°16'55" Lt.	48.00'	46.58'	73.96'	18.89'	1,672,223.7260	1,607,483.0529	1,672,224.9400	1,607,529.6189	1,672,271.5215	1,607,529.8015	1,672,271.7097	1,607,481.8019
FC005	03°18'30" Rt.	1,202.00'	34.71'	69.41'	0.50'	1,672,556.6754	1,607,598.9198	1,672,591.3884	1,607,599.0559	1,672,626.0513	1,607,597.1884	1,672,561.3871	1,606,396.9290
FC006	03°18'30" Rt.	1,198.00'	34.60'	69.18'	0.50'	1,672,626.0513	1,607,597.1884	1,672,660.5989	1,607,595.3271	1,672,695.1964	1,607,595.4628	1,672,690.5003	1,608,793.4535
FC007	03°18'30" Rt.	1,202.00'	34.71'	69.41'	0.50'	1,672,556.9420	1,607,530.9203	1,672,591.6549	1,607,531.0564	1,672,626.3022	1,607,533.1956	1,672,552.2303	1,608,732.9111
FC008	03°18'30" Lt.	1,198.00'	34.60'	69.18'	0.50'	1,672,626.3022	1,607,533.1956	1,672,660.8341	1,607,535.3276	1,672,695.4315	1,607,535.4632	1,672,700.1276	1,606,337.4724

Plotted By: svb Date: 1/21/2011 11:06:41 AM
 FILE: I:\2008\08208\Geometry\08208-cogog92.dgn



119TH ST.
COORDINATE GEOMETRY PLAN
 STA. 192+00 TO STA. 204+00
 JAMES L. ARMOUR, P.E. - CITY ENGINEER
 CITY OF WICHITA PROJECT NO. 472-84694
Professional Engineering Consultants, P.A.
 303 S. TOPEKA - WICHITA, KANSAS 67202
 316-262-2691 • FAX 316-262-3003

Designed by	JPS	Job No.	08208	Sheet	18 of 149
Drawn by	AKL	Date	Sept., 2010		