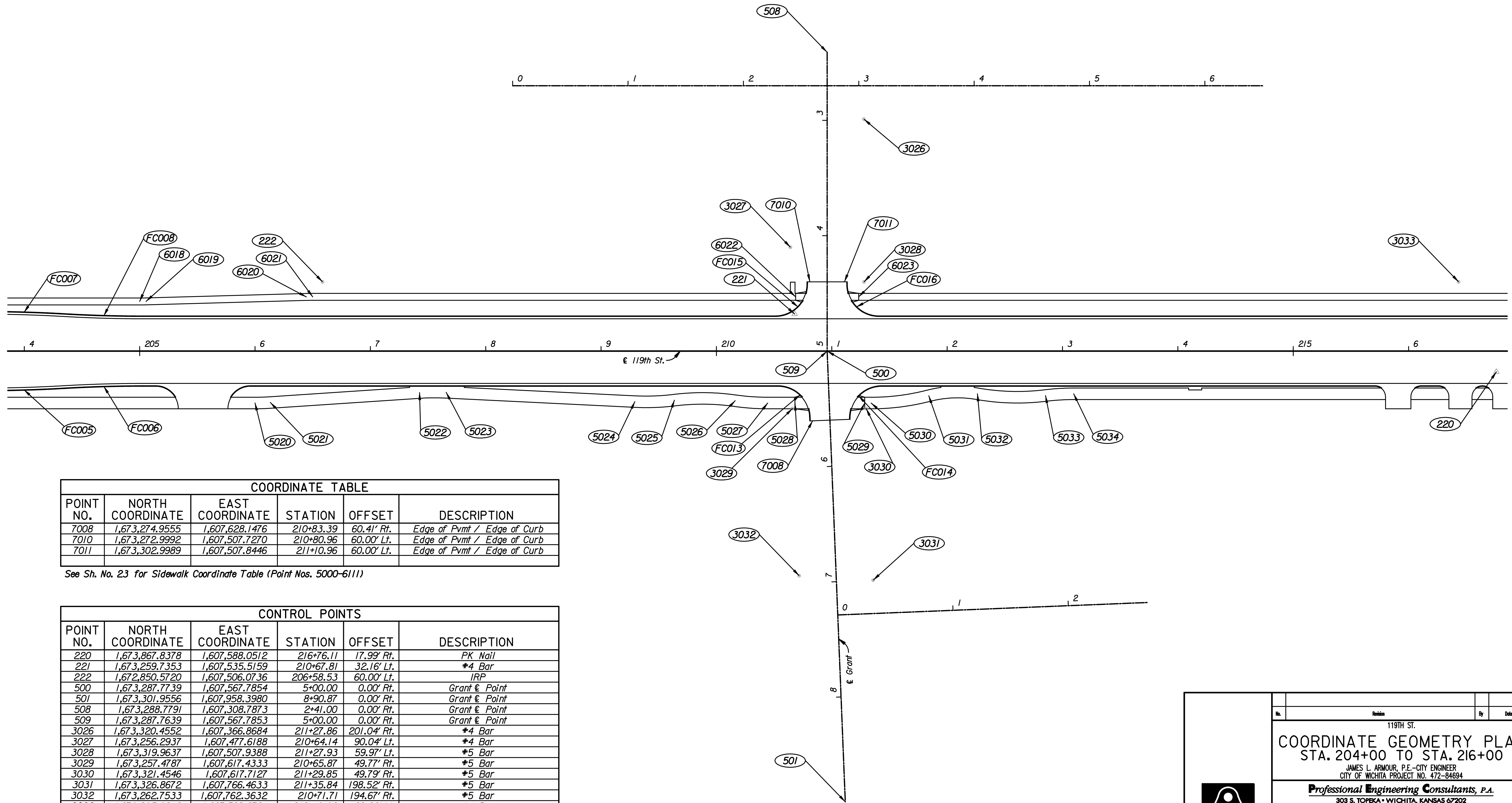


NO.	Δ	R	T	L	E	P.C. COORDINATES		P.I. COORDINATES		P.T. COORDINATES		C.C. COORDINATES	
						NORTH	EAST	NORTH	EAST	NORTH	EAST	NORTH	EAST
						FC013	87°41'46" Rt.	28.00'	26.90'	42.86'	10.83'	1,673,244.9536	1,607,597.6178
FC014	92°18'14" Rt.	28.00'	29.15'	45.11'	12.42'	1,673,306.9344	1,607,626.9865	1,673,305.8768	1,607,597.8566	1,673,335.0258	1,607,597.9708	1,673,334.9160	1,607,625.9706
FC015	90°00'00" Lt.	28.00'	28.00'	43.98'	11.60'	1,673,242.8818	1,607,537.6092	1,673,270.8816	1,607,537.7189	1,673,270.9913	1,607,509.7191	1,673,242.9916	1,607,509.6094
FC016	90°00'00" Lt.	28.00'	28.00'	43.98'	11.60'	1,673,304.9911	1,607,509.8524	1,673,304.8813	1,607,537.8522	1,673,332.8811	1,607,537.9620	1,673,332.9909	1,607,509.9622

Scale: 1"=40'



POINT NO.	NORTH COORDINATE	EAST COORDINATE	STATION	OFFSET	DESCRIPTION
7008	1,673,274.9555	1,607,628.1476	210+83.39	60.41' Rt.	Edge of Pvmf / Edge of Curb
7010	1,673,272.9992	1,607,507.7270	210+80.96	60.00' Lt.	Edge of Pvmf / Edge of Curb
7011	1,673,302.9989	1,607,507.8446	211+10.96	60.00' Lt.	Edge of Pvmf / Edge of Curb

See Sh. No. 23 for Sidewalk Coordinate Table (Point Nos. 5000-6111)

POINT NO.	NORTH COORDINATE	EAST COORDINATE	STATION	OFFSET	DESCRIPTION
220	1,673,867.8378	1,607,588.0512	216+76.11	17.99' Rt.	PK Nail
221	1,673,259.7353	1,607,535.5159	210+67.81	32.16' Lt.	*4 Bar
222	1,672,850.5720	1,607,506.0736	206+58.53	60.00' Lt.	IRP
500	1,673,287.7739	1,607,567.7854	5+00.00	0.00' Rt.	Grant & Point
501	1,673,301.9556	1,607,958.3980	8+90.87	0.00' Rt.	Grant & Point
508	1,673,288.7791	1,607,308.7873	2+41.00	0.00' Rt.	Grant & Point
509	1,673,287.7639	1,607,567.7853	5+00.00	0.00' Rt.	Grant & Point
3026	1,673,320.4552	1,607,366.8684	211+27.86	201.04' Rt.	*4 Bar
3027	1,673,256.2937	1,607,477.6188	210+64.14	90.04' Lt.	*4 Bar
3028	1,673,319.9637	1,607,507.9388	211+27.93	59.97' Lt.	*5 Bar
3029	1,673,257.4787	1,607,617.4333	210+65.87	49.77' Rt.	*5 Bar
3030	1,673,321.4546	1,607,617.7127	211+29.85	49.79' Rt.	*5 Bar
3031	1,673,326.8672	1,607,766.4633	211+35.84	198.52' Rt.	*5 Bar
3032	1,673,262.7533	1,607,762.3632	210+71.71	194.67' Rt.	*5 Bar
3033	1,673,835.3948	1,607,509.8764	216+43.36	60.06' Lt.	*4 Bar

Plotted By: svb Date: 1/21/2011 11:08:37 AM  
 FILE: I:\2008\08208\Geometry\08208-co-go204.dgn

119TH ST.		By	Date
<b>COORDINATE GEOMETRY PLAN</b>			
STA. 204+00 TO STA. 216+00			
JAMES L. ARMOUR, P.E. - CITY ENGINEER CITY OF WICHITA PROJECT NO. 472-84694			
<b>Professional Engineering Consultants, P.A.</b> 303 S. TOPEKA - WICHITA, KANSAS 67202 316-262-2691 • FAX 316-262-3003			
Designed by	JPS	Job No.	08208
Drawn by	AKL	Date	Sept., 2010
			Sh. 19 of 149