

Scale: 1"=20'

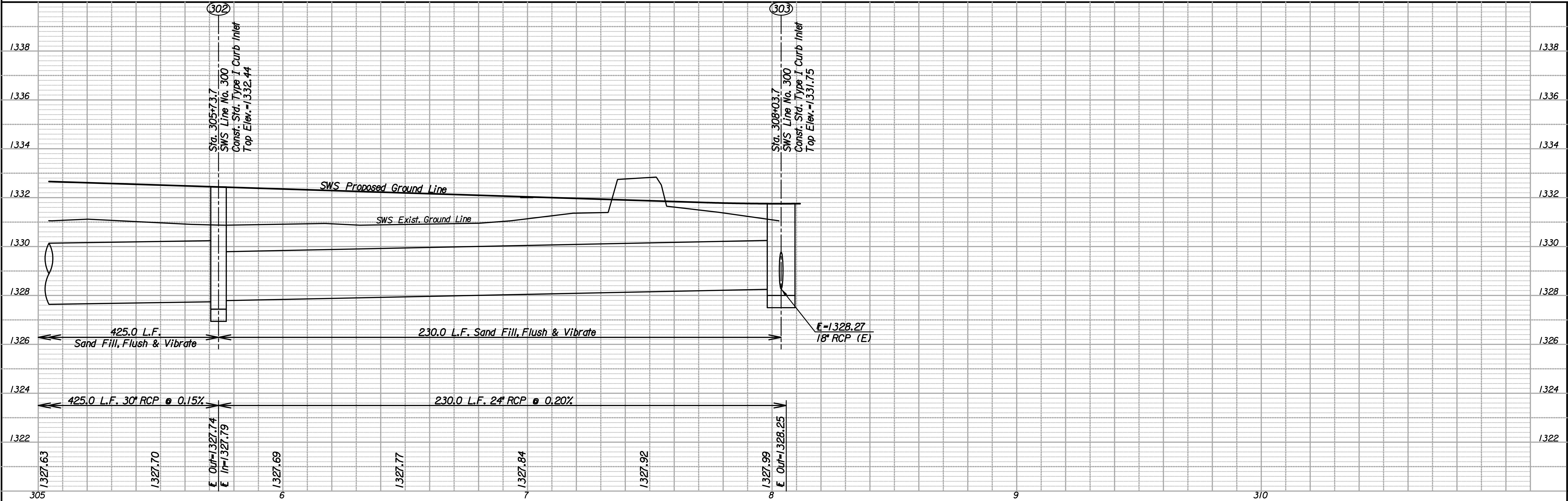
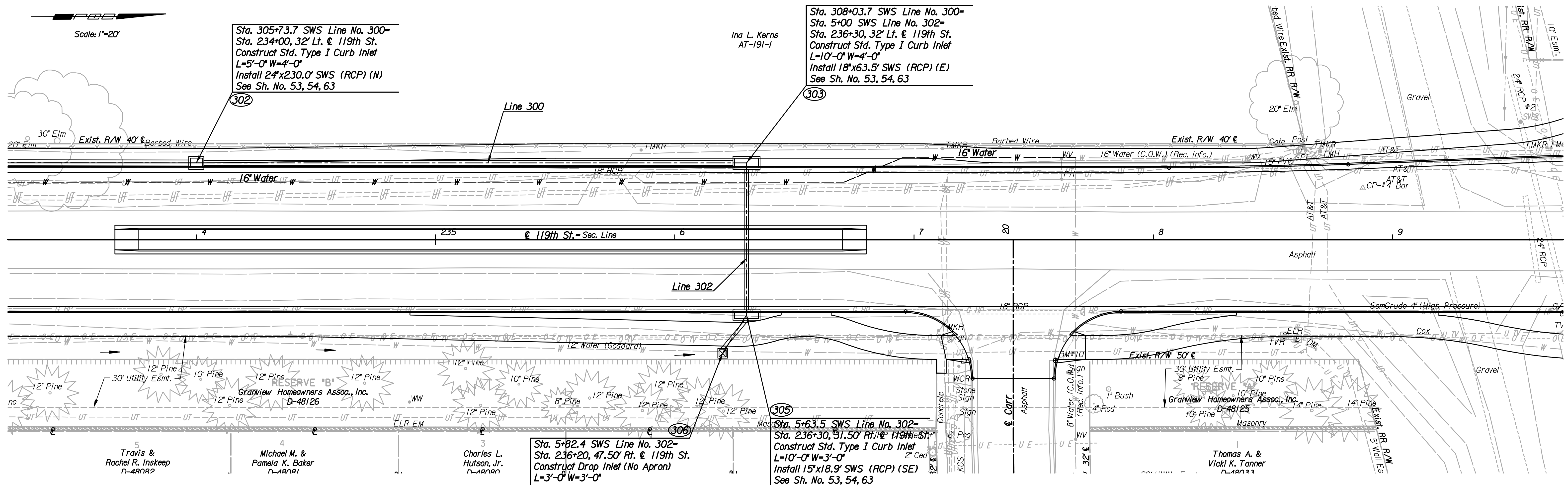
Sta. 305+73.7 SWS Line No. 300-
Sta. 234+00, 32' Lt. of 119th St.
Construct Std. Type I Curb Inlet
L=5'-0" W=4'-0"
Install 24"x230.0' SWS (RCP) (N)
See Sh. No. 53, 54, 63

Sta. 308+03.7 SWS Line No. 300-
Sta. 5+00 SWS Line No. 302-
Sta. 236+30, 32' Lt. of 119th St.
Construct Std. Type I Curb Inlet
L=10'-0" W=4'-0"
Install 18"x63.5' SWS (RCP) (E)
See Sh. No. 53, 54, 63

Ina L. Kerns
AT-191-1

Sta. 5+82.4 SWS Line No. 302-
Sta. 236+20, 47.50' Rt. of 119th St.
Construct Drop Inlet (No Apron)
L=3'-0" W=3'-0"
See Sh. No. 56, 63

Sta. 5+63.5 SWS Line No. 302-
Sta. 236+30, 51.50' Rt. of 119th St.
Construct Std. Type I Curb Inlet
L=10'-0" W=3'-0"
Install 15"x18.9' SWS (RCP) (SE)
See Sh. No. 53, 54, 63



119TH STREET
LINE NO. 300
STORM SEWER PLAN
STA. 305+00 TO STA. 309+41.7
C.O.W. PROJ. NO. 472-84684

Professional Engineering Consultants, P.A.
300 S. TORRECA WICHITA, KANSAS 67202
316-266-2591 • FAX 316-266-0600

Designed by JPS
Drawn by SVB

Job No. 08208
Date Sept., 2010

Sheet 34 of 149

Plotted By: svb
Date: 1/21/2011 2:13:08 PM
FILE: I:\2008\08208\SWS\08208-SWS System 300-2.dgn