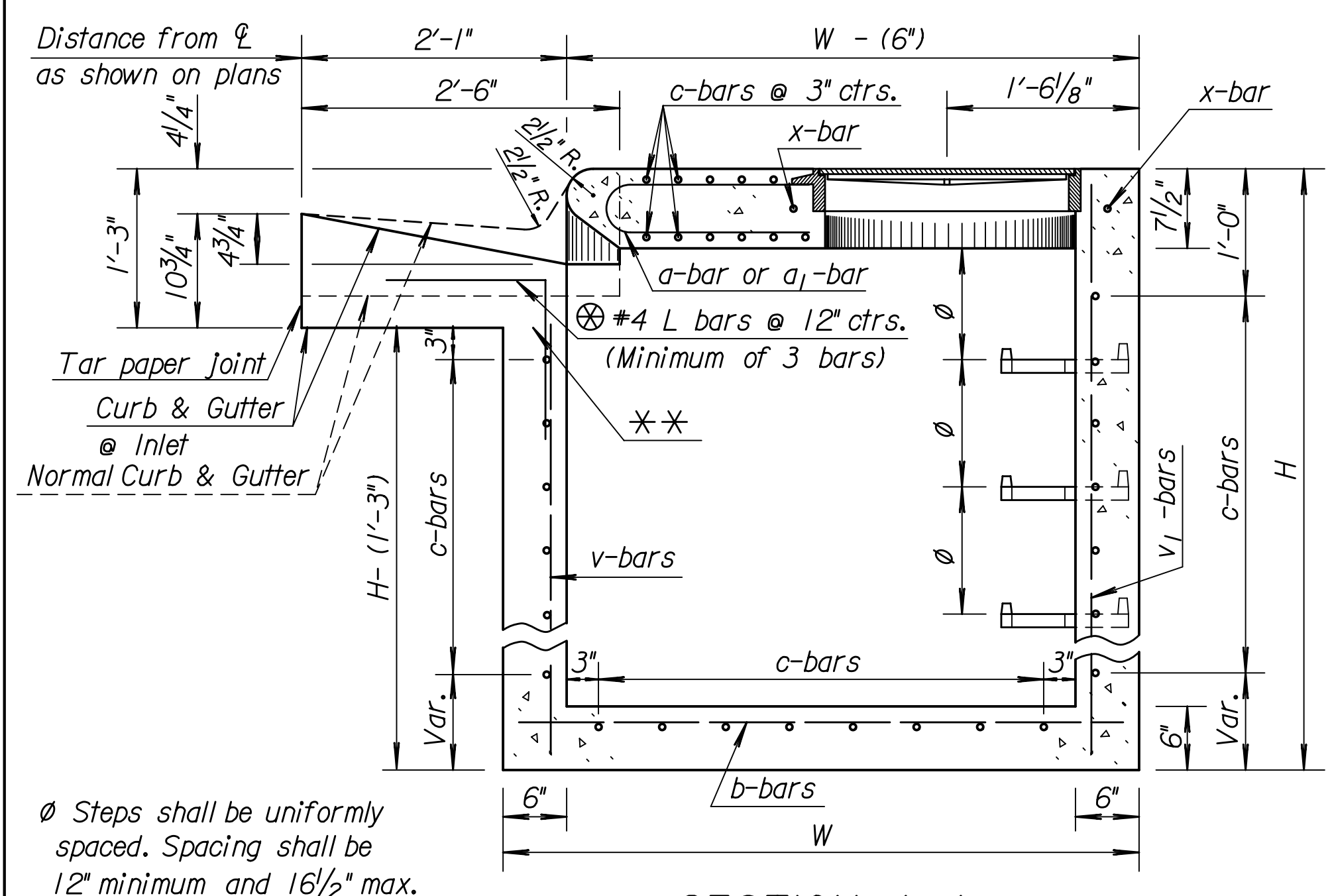
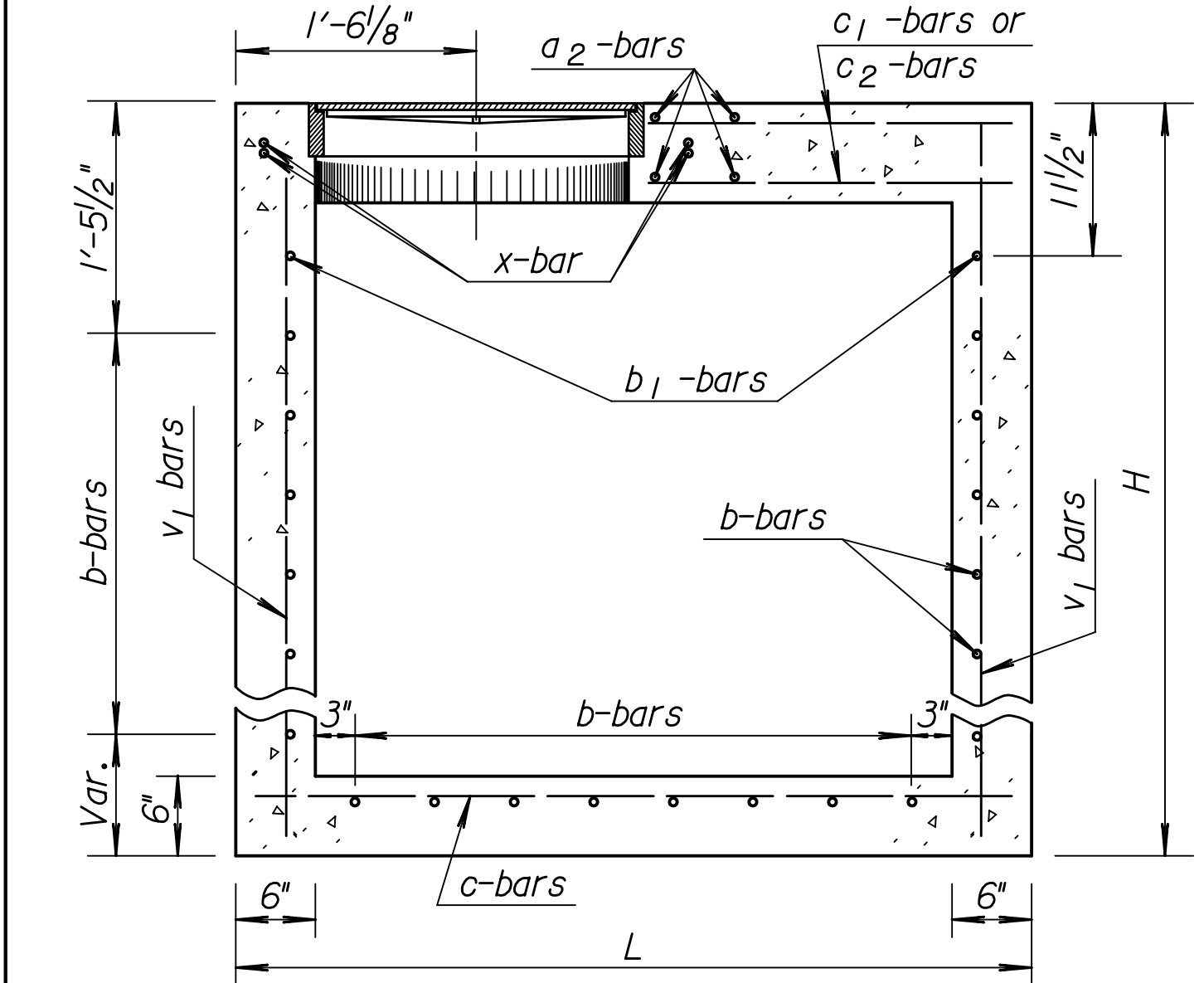


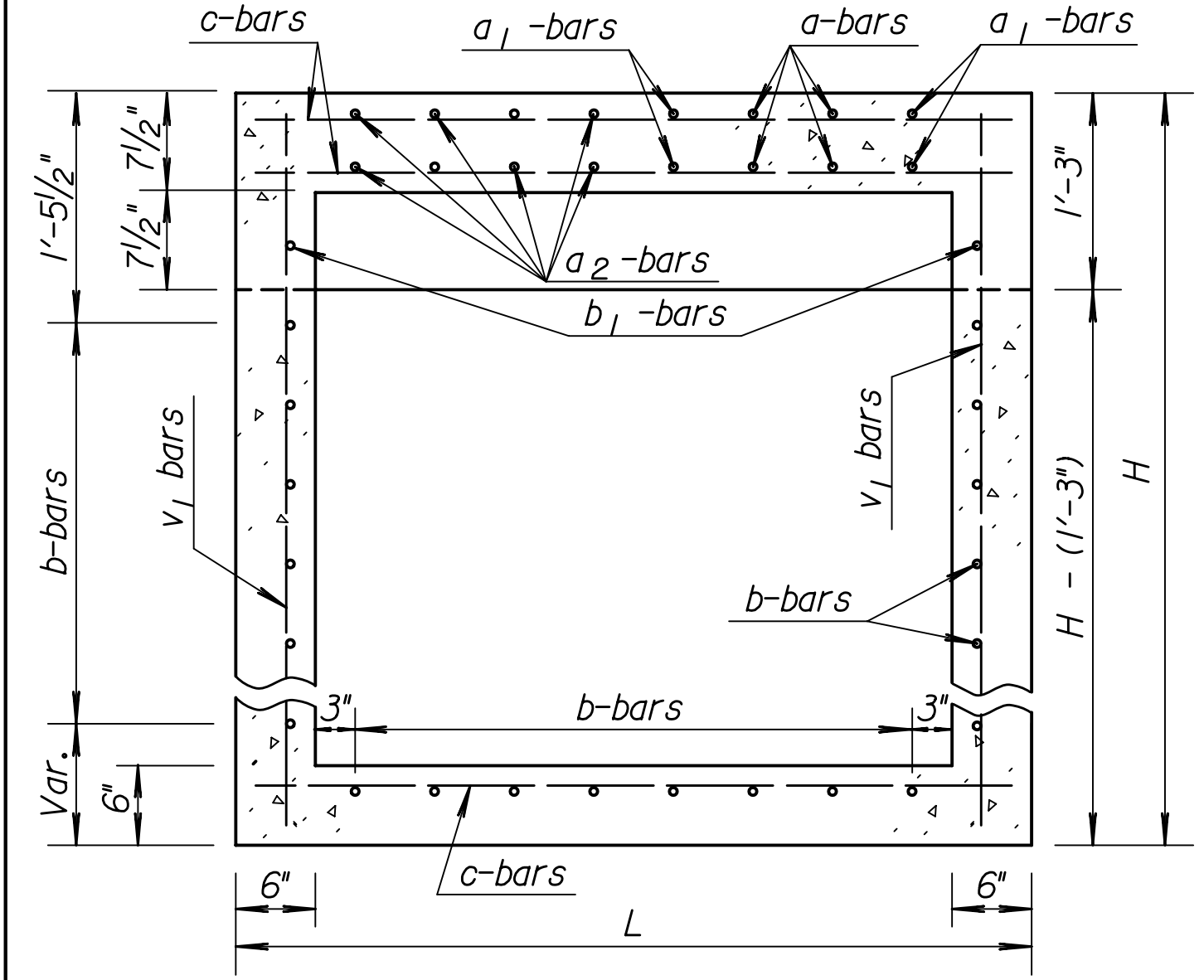
STATE	PROJECT NO.	YEAR	SHEET NO.	TOTAL SHEETS
KANSAS	472-84694	2010	55	149



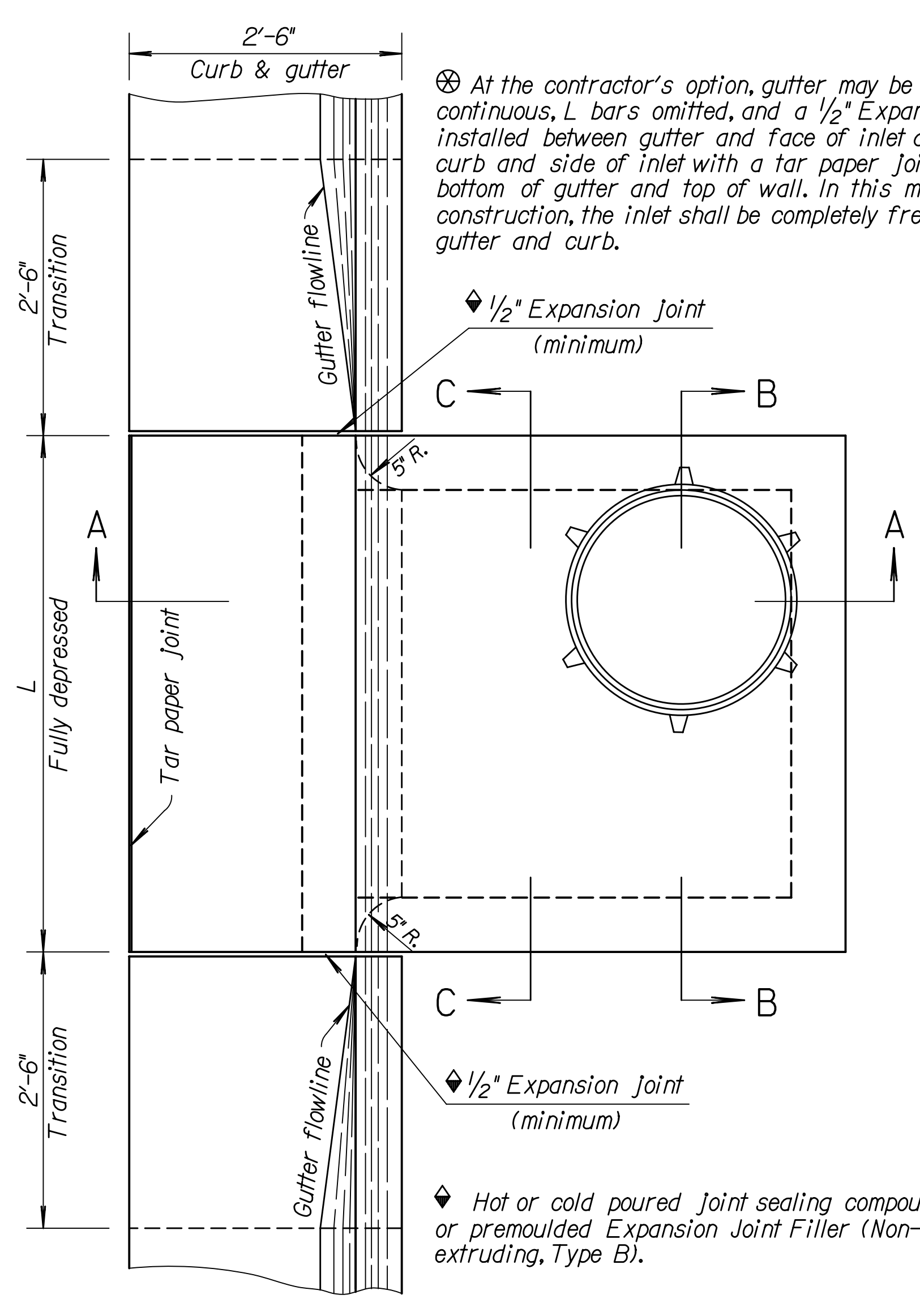
SECTION A-A



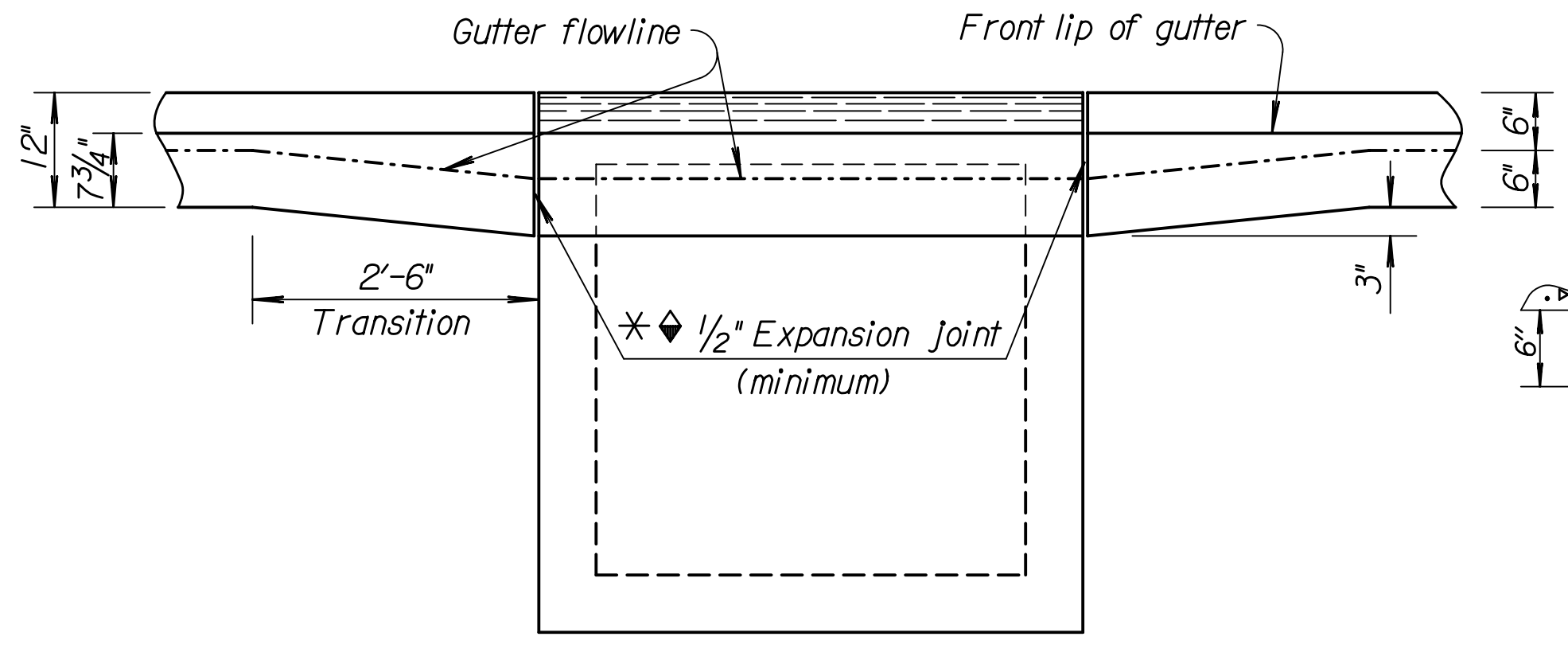
SECTION B-B



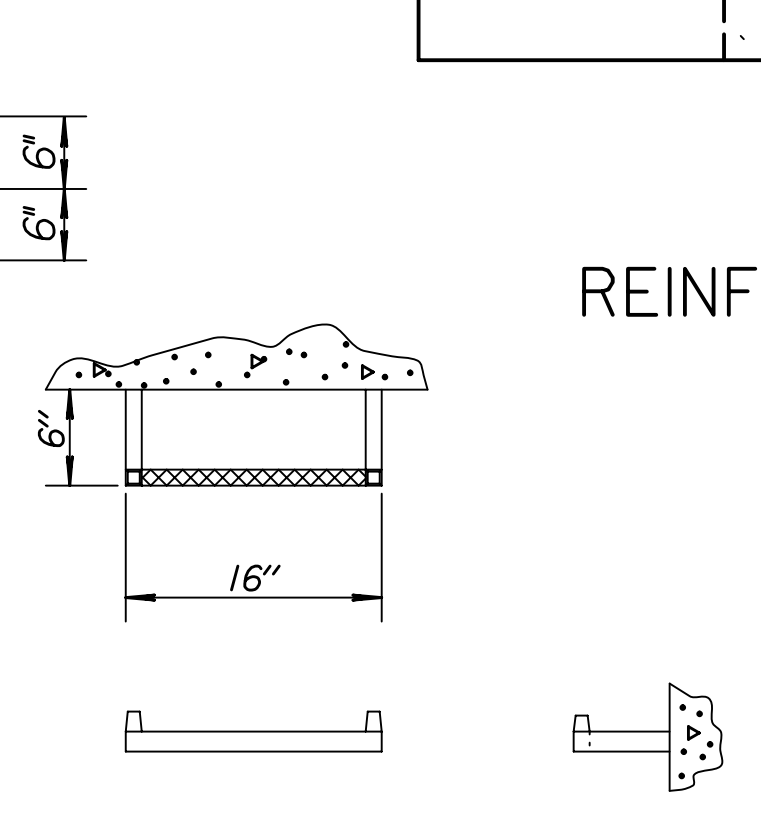
SECTION C-C



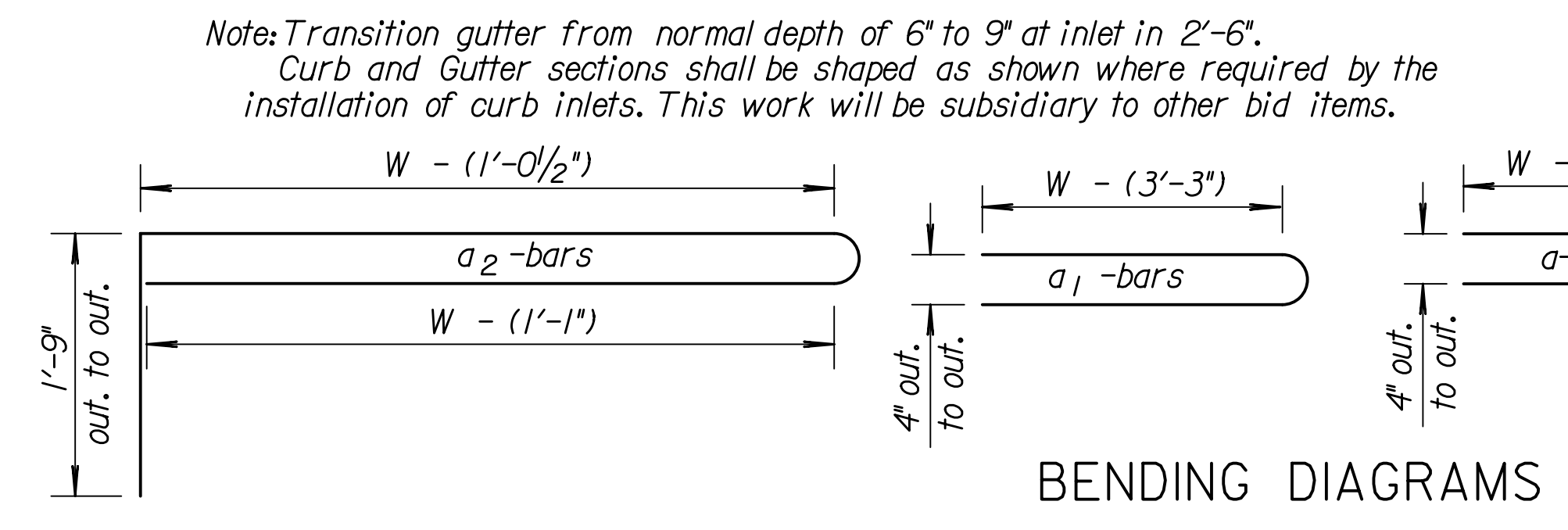
PLAN



ELEVATION



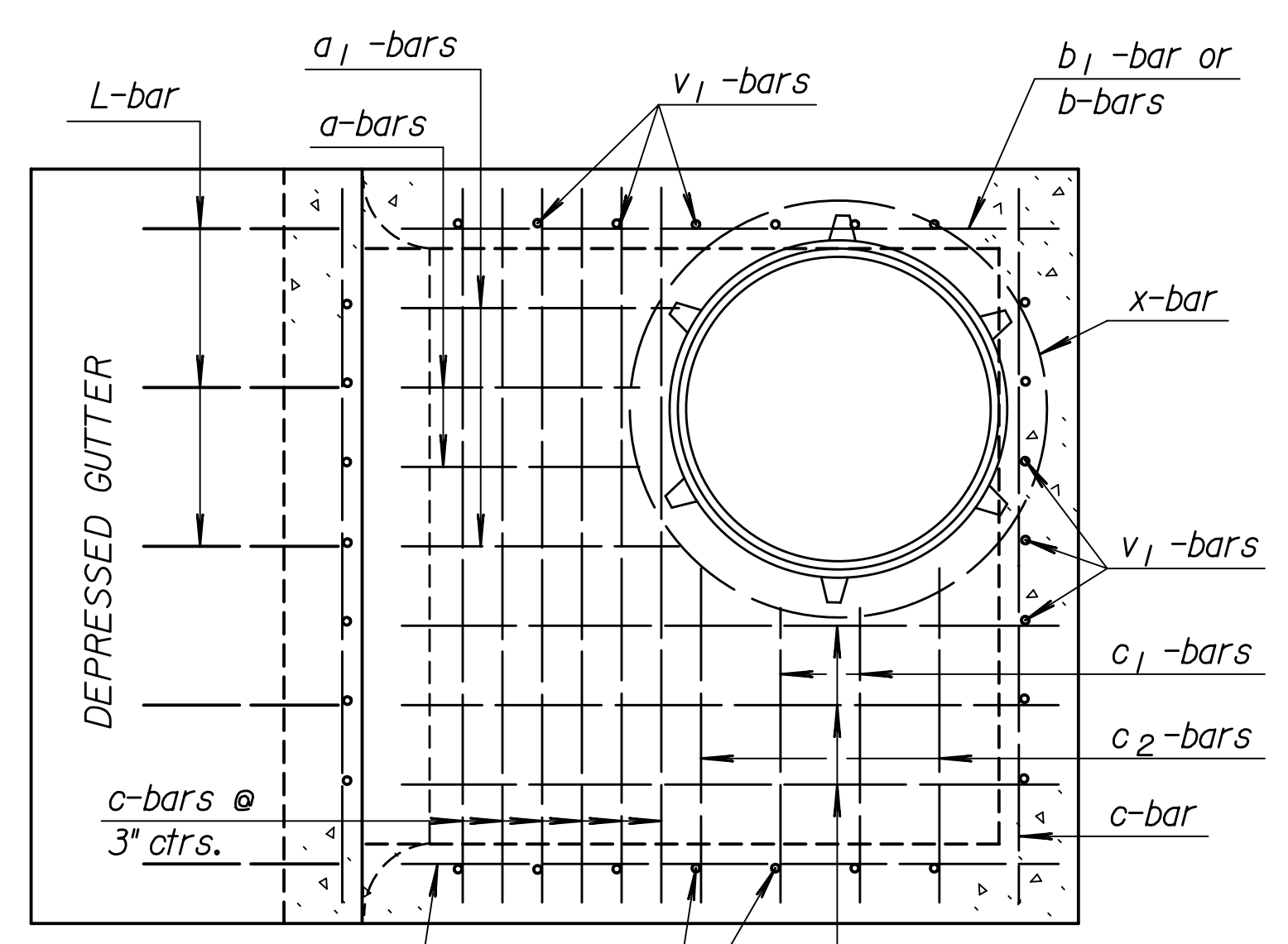
STEP DETAILS



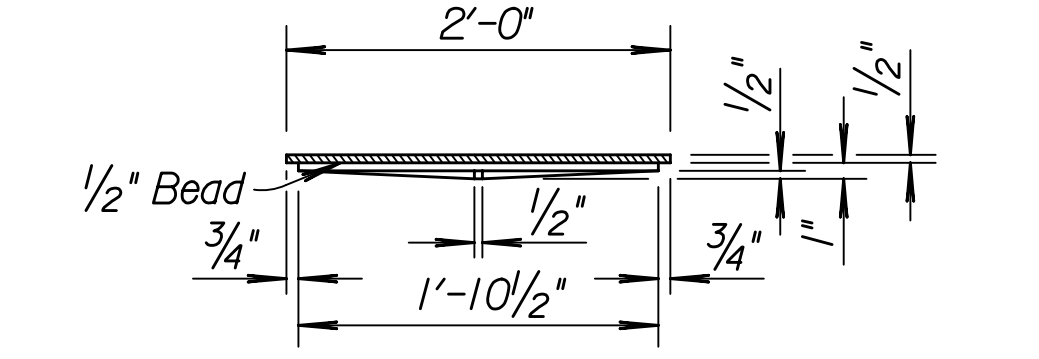
BENDING DIAGRAMS

GENERAL NOTES

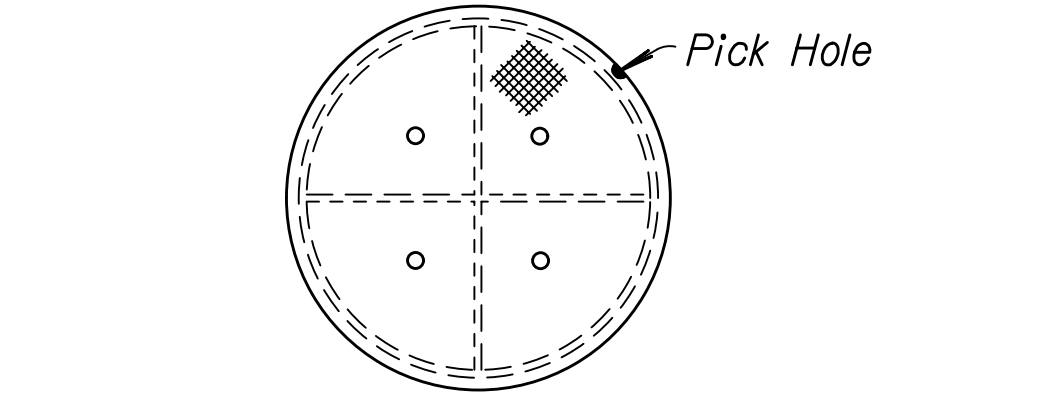
Use Concrete Grade 3.0 throughout. All exposed edges shall be finished with an edging tool. At the contractor's option Concrete Grade 3.0 (AE) or mix used in concrete pavement may be used throughout. In general, pipes will enter and leave manhole at various positions. Where possible bend bars around pipes. Floor of manhole to be shaped as shown in various "EXAMPLES" with unreinforced Concrete Grade 3.0. Manhole opening and steps, where used, shall be placed to afford easy access to top of shaped invert. Top reinforcing bars to be adjusted accordingly. All castings shall be gray iron and shall comply with the KDOT Standard Specifications. When so ordered by the Engineer, the top of the manhole shall be sloped slightly to approximately fit the ground line or other conditions. Dimensions and weights of cast iron as shown on this sheet are minimum. Larger dimensions and/or heavier weights of cast iron may be used. Steps shall be installed in all storm sewer inlets when specified in the plans or when "H" is equal to or greater than six feet. Steps shall comply with the KDOT Standard Specification. No reduction in concrete quantities shall be made for pipe openings. When directed by the Engineer, a small opening in the back of the inlet shall be provided in order to drain a low area. Reinforcing bars shall extend through the opening. No reduction in concrete quantities will be made for this opening. No addition in concrete quantities shall be made for shaping floor of inlet. No reduction in pay length of curb, gutter, or curb & gutter will be made through the inlet area. The weight of castings includes no allowance for fillets and overruns. Curb and Gutter sections shall be shaped as shown where required by the installation of curb inlets. This work shall be subsidiary to other bid items. See sheet entitled "Reinforcing Steel for Inlets and Manholes" for details and quantities. For additional notes and details on Light Type Cast Iron Manhole Cover and Ring Type C and Cast Iron Steps, see Standard Drawing RD633 "Reinforced Concrete Manhole". All reinforcing steel shall be #4 at 6" centers except where noted. Minimum clear distance to reinforcement shall be 1 1/2".



REINFORCING STEEL TOP VIEW



MANHOLE COVER TYPE C
(Weight= 64 lbs.)



MANHOLE RING
(Weight= 53 lbs.)

NOTE: All manhole castings are cast iron. Weight of castings includes no allowance for fillets and overruns.

* LIGHT TYPE
MANHOLE COVER & RING
* Rings with four equally spaced lugs will be permitted.

NO.	DATE	REVISIONS	BY	APP'D
6	1-28-05	Changed Class to Grade concrete	S.W.K.	J.O.B.
5	12-11-97	Revised step spacing	R.J.S.	J.O.B.
4	3-20-96	Added reinforcement note	R.J.S.	J.O.B.
3	12-8-94	Added misc. notes	R.J.S.	J.O.B.

KANSAS DEPARTMENT OF TRANSPORTATION

TYPE 22
CURB INLET

RD646	6-10-05	APP'D. James O. Brewer
DESIGNED	DETAILED	QUANTITIES
DESIGN CK.	DETAIL CK.	QUAN. CK.
		TRACED
		TRACE CK.

Drawn By: svb
Plotted: 1/21/2011
File: I:\2008\08208\Standards\08208-rd646.dgn