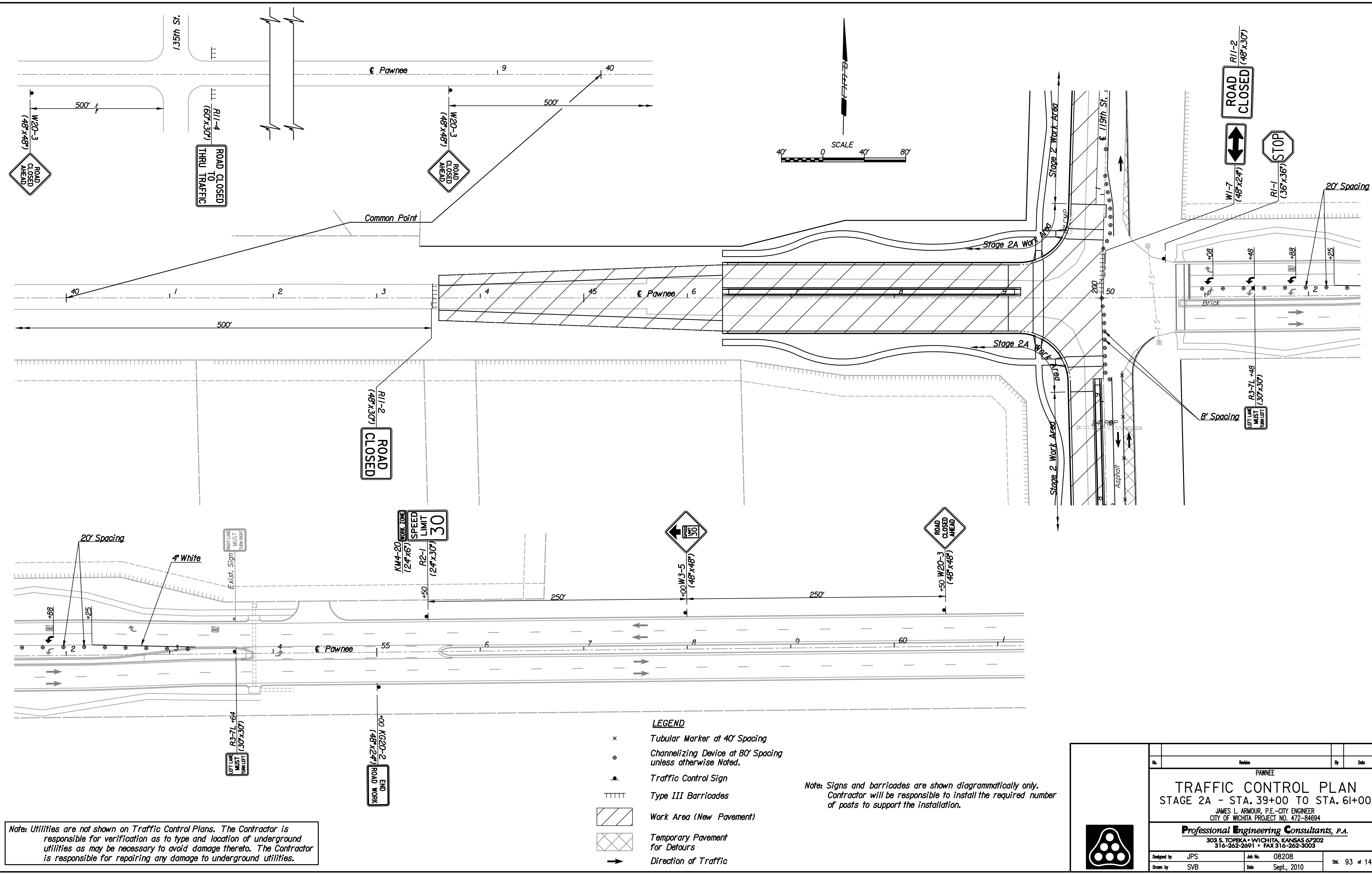


Plotted By: svb Date: 1/24/2011 4:48:54 PM
 FILE: I:\2008\08208\Traffic Control\08208-TC Stage 2A Pawnee.dgn



Note: Utilities are not shown on Traffic Control Plans. The Contractor is responsible for verification as to type and location of underground utilities as may be necessary to avoid damage thereto. The Contractor is responsible for repairing any damage to underground utilities.

- LEGEND**
- x Tubular Marker at 40' Spacing
 - o Channelizing Device at 80' Spacing unless otherwise Noted.
 - Traffic Control Sign
 - TTTTT Type III Barricades
 - [Hatched Box] Work Area (New Pavement)
 - [Cross-hatched Box] Temporary Pavement for Detours
 - Direction of Traffic

Note: Signs and barricades are shown diagrammatically only. Contractor will be responsible to install the required number of posts to support the installation.

Revision		By	Date
PAWNEE			
TRAFFIC CONTROL PLAN			
STAGE 2A - STA. 39+00 TO STA. 61+00			
JAMES L. ARMOUR, P.E. - CITY ENGINEER CITY OF WICHITA PROJECT NO. 472-84694			
Professional Engineering Consultants, P.A. 303 S. TOPKA - WICHITA, KANSAS 67202 316-262-2691 • FAX 316-262-3003			
Designed by	JPS	Job No.	08208
Drawn by	SVB	Date	Sept., 2010
			Sht. 93 of 149