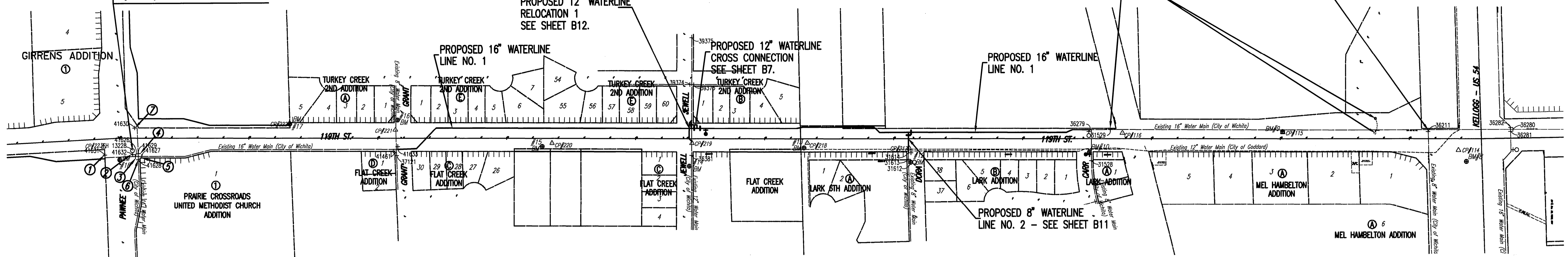


N: 1,672,234.9207, E: 1,607,628.1978
@ 119th St., Sta. 200+43.36, 64.54' Rt. =
Existing FH #13228
Existing FH Bury Line El.=1336.62
Install Hydrant Barrel Extension(s) to
adjust Bury Line to El.=1337.62

@ 119th St., Sta. 238+40, 33' Lt. =
Adjust Water Valve Box
From Elev. 1331.36
To Elev. 1332.08

119th St., Sta. 248+68.3, 29.1' Lt. =
Existing Air Release Assembly. Remove
and relocate at Sta. 248+68, 78' Lt.
Top Elev.=1331.49

@ 119th St., Sta. 250+72, 27' Lt. =
Adjust Water Valve Box
From Elev. 1334.32
To Elev. 1334.19



@ 119th St., Sta. 199+33, 69' Rt. =
Adjust Water Valve Box
From Elev. 1337.33
To Elev. 1338.30

@ 119th St., Sta. 200+74, 70' Rt. =
Adjust Water Valve Box
From Elev. 1337.55
To Elev. 1338.71

@ 119th St., Sta. 200+43, 67' Rt. =
Adjust Water Valve Box
From Elev. 1336.64
To Elev. 1337.30

@ 119th St., Sta. 200+72, 72' Rt. =
Adjust Water Valve Box
From Elev. 1337.39
To Elev. 1338.80

@ 119th St., Sta. 200+70, 70' Rt. =
Adjust Water Valve Box
From Elev. 1337.15
To Elev. 1337.19

@ 119th St., Sta. 200+68, 46' Lt. =
Adjust Water Valve Box
From Elev. 1337.05
To Elev. 1338.68

@ 119th St., Sta. 200+71, 67' Rt. =
Water Valve Box
From Elev. 1337.23
(No adjustment needed)

LEGEND

- EXISTING WATER MAIN
PROPOSED WATER MAIN
EXISTING WATER VALVE
PROPOSED WATER VALVE
EXISTING FIRE HYDRANT
PROPOSED FIRE HYDRANT
EXISTING BLOW OFF
PROPOSED BLOW OFF
EXISTING AIR RELEASE

GENERAL NOTES

- 1. ALL ELEVATIONS SHOWN ARE U.S.G.S. DATUM.
2. CONTRACTOR WILL BE REQUIRED TO PROVIDE A MINIMUM ADVANCE NOTICE OF SEVENTY-TWO (72) HOURS TO UTILITY COMPANIES PRIOR TO STARTING ANY EXCAVATION AS FOLLOWS:
KANSAS ONE-CALL 687-2470
CITY OF WICHITA UTILITY LOCATES WWW.WICHITA.GOV/LOCATE(268-4260)
CITY OF GODDARD 794-8992
MR. RANDY BROOKS
THE CONTRACTOR MUST NOTIFY THE FOLLOWING IN CASE OF AN EMERGENCY:
COX COMMUNICATIONS 262-0661
KANSAS GAS SERVICE 832-3169
WESTAR ENERGY 383-8600
SEMCRUDE, LP 1(405)-692-5137
AT&T 1(800)-870-8390
CITY OF WICHITA WATER DEPARTMENT 262-6000
CITY OF WICHITA SEWER MAINTENANCE 262-6000
3. ALL WATER MAINS AND APPURTENANCES SHALL BE INSTALLED IN ACCORDANCE WITH CITY OF WICHITA, KANSAS STANDARD SPECIFICATIONS.
4. THE WATER MAIN SHALL BE CONSTRUCTED ON THE ALIGNMENT SHOWN BY THE PLANS. TREES AND SHRUBS IN PUBLIC RIGHT-OF-WAY WHICH ARE IN DIRECT CONFLICT WITH PROPOSED NEW CONSTRUCTION SHALL BE REMOVED BY THE CONTRACTOR WITH THE ENGINEER'S APPROVAL. TREES AND SHRUBS WHICH ARE NOT IN DIRECT CONFLICT WITH PROPOSED NEW CONSTRUCTION SHALL BE SAVED AND PROTECTED FROM DAMAGE. THE COST FOR ANY NECESSARY TREE TRIMMING, CLEARING AND/OR GRUBBING SHALL BE SUBSIDIARY TO "SITE CLEARING".
5. OPENING AND CLOSING WATER VALVES SHALL BE DONE SLOWLY TO PREVENT DAMAGE TO THE WATER DISTRIBUTION SYSTEM FROM WATER HAMMER. ALL VALVES CLOSED BY THE CONTRACTOR MUST BE REOPENED AS NEW CONSTRUCTION PERMITS. PROJECT INSPECTOR MUST ASCERTAIN THAT ANY VALVE CLOSED BY THE CONTRACTOR IS REOPENED. CONTRACTOR WILL BE PERMITTED TO OPERATE WATER VALVES ONLY WHEN THE PROJECT INSPECTOR ASSIGNED TO THE PROJECT IS PRESENT.
6. THE CONTRACTOR SHALL NOT START WORK ON THE PROJECT UNTIL THE PROJECT INSPECTOR IS ASSIGNED TO THE PROJECT AND IS PRESENT ON THE SITE. ANY WORK DONE WITHOUT INSPECTION WILL BE REQUIRED TO BE UNCOVERED FOR INSPECTION.
7. THE CONTRACTOR SHALL GIVE ALL PROPERTY OWNERS AND/OR TENANTS OF DEVELOPED PROPERTY DIRECTLY ADJUTING THE CONSTRUCTION OF THIS PROJECT A MINIMUM OF TEN (10) DAYS ADVANCE NOTICE PRIOR TO START OF CONSTRUCTION.
8. THE CONTRACTOR SHALL BE RESPONSIBLE FOR PRESERVING PROPERTY IRONS. THE CONTRACTOR SHALL BE REQUIRED TO RE-ESTABLISH ANY PROPERTY IRONS WHICH ARE DAMAGED OR DESTROYED BY HIS CONSTRUCTION OPERATIONS. SUCH IRONS SHALL BE RE-ESTABLISHED BY A LICENSED LAND SURVEYOR IN ACCORDANCE WITH STATE LAWS. ALL COSTS FOR THIS WORK SHALL BE SUBSIDIARY TO SITE RESTORATION.
9. THE CONTRACTOR SHALL RESTORE ALL DITCHES, SWALES, ROAD SHOULDERS, ENTRANCES, AND BANKLINES TO THEIR ORIGINAL SLOPES AND GRADES EXCEPT AS SHOWN OTHERWISE.
10. NO SERVICES WILL BE INSTALLED AS PART OF THIS PROJECT.
11. INTERURBAN TRAFFIC GENERATED OUTSIDE THE PROJECT AREA AND LOCAL BUSINESS OR RESIDENTIAL TRAFFIC GENERATED WITHIN THE PROJECT AREA ARE TO BE CARRIED THROUGH CONSTRUCTION AS FURTHER PROMULGATED BY PROJECT SPECIAL PROVISIONS. THE CONTRACTOR SHALL UTILIZE BARRICADES, SIGNS, GUARDS, AND FLAGMEN IN ACCORDANCE WITH THE MANUAL ON UNIFORM TRAFFIC CONTROL DEVICES. ALL TRAFFIC CONTROL REQUIRED TO COMPLETE WATERLINE CONSTRUCTION SHALL BE SUBSIDIARY TO WATERLINE PROJECT COSTS. TRAFFIC CONTROL REQUIRED FOR WATERLINE CONSTRUCTION IS INDEPENDENT OF TRAFFIC CONTROL REQUIRED FOR THE HIGHWAY IMPROVEMENT.
12. RUBBLE FROM THE REMOVAL OF MISCELLANEOUS STRUCTURES INCLUDING ANY TREES REMOVED AND TREE TRIMMING AND EXCESS EXCAVATED MATERIAL SHALL BE DISPOSED OF ON SITES PROVIDED BY THE CONTRACTOR. THESE SITES SHALL ALSO BE APPROVED OF BY THE ENGINEER AS TO SUITABILITY, APPEARANCE, AND SITE LOCATION. LOCATIONS THAT, IN THE OPINION OF THE ENGINEER, LEAVE AN UNSIGHTLY APPEARANCE WILL NOT BE APPROVED. ALL DISPOSAL SITES MUST BE APPROVED BY THE KANSAS DEPARTMENT OF HEALTH AND ENVIRONMENT. MATERIAL EITHER STOCKPILED OR DISPOSED OF IN A FLOOD PLAIN WILL REQUIRE A KANSAS STATE BOARD OF AGRICULTURE PERMIT. ANY MATERIAL DUMPED IN WATERS OF THE UNITED STATES OR WETLANDS IS SUBJECT TO U.S. CORPS OF ENGINEERS PERMITTING REGULATIONS. ANY MATERIAL BURIED OR STOCKPILED BEYOND APPROVED CONSTRUCTION LIMITS MAY REQUIRE ARCHAEOLOGICAL INVESTIGATIONS UNLESS BURIED IN A PREVIOUSLY APPROVED DISPOSAL LOCATION.

ADJUSTMENT OF VALVE BOXES (WATER)
ROADWAY STATION OFFSET SIDE FROM TO QUANTITY Valve
(ELEVATION) (ELEVATION) (EACH) No.
119th St. 199+33 69 Rt. 1337.33 1338.30 1 41631
119th St. 200+43 67 Rt. 1336.64 1337.30 1 41632
119th St. 200+68 46 Lt. 1337.05 1338.68 1 41630
119th St. 200+70 70 Rt. 1337.15 1337.19 1 41626
119th St. 200+72 72 Rt. 1337.39 1338.80 1 41628
119th St. 200+74 70 Rt. 1337.55 1336.71 1 41627
119th St. 238+40 33 Lt. 1331.36 1332.08 1 31529
119th St. 250+72 27 Lt. 1334.32 1334.19 1 36211
Total 8

CONSTRUCTION SEQUENCE

- THE CONTRACTOR MAY SUBMIT HIS OWN CONSTRUCTION SEQUENCE FOR APPROVAL BY THE ENGINEER IN LIEU OF USING THE FOLLOWING:
- CONSTRUCT 16" WATER MAIN LINE NO. 1 FROM STA. 0+60.00 TO STA. 27+26.23.
- INSTALL 12" CI MJ PLUG (TEMPORARY) IN 16" x 12" TEE AT STA. 11+80.78.
- CLOSE EXIST. 16" VALVE (NO. 31529 - 119TH & CARR) PRIOR TO CONNECTING TO NEW PIPE TO EXIST. 16" TEE.
- CLOSED EXISTING 8" LINE VALVE (NO. 31523 - CARR, E. OF 119TH ST.)
- INSTALL NEW FH ON EXISTING 8" WATERLINE IN CARR ST. WITH CLEAN SWABBED PIPE. (SEE SHEET B10)
- INSTALL TEMPORARY BLOWOFF @ STA. 0+60.00
- OPEN 16" VALVE 31529 AND FILL NEW 16" WATER MAIN.
- BLOWOFF 8" LINE TO E. THRU NEW FH IN CARR ST.
- TEST, DISINFECT, AND FLUSH LINE NO. 1 PER CITY OF WICHITA SPECIFICATIONS.
- OPEN 8" VALVE (NO. 31528 - CARR ST.)
- CONSTRUCT WATERLINE RELOCATION 1, AT JEWELL ST. (SEE SHEET B12), CONSTRUCT 12" CROSS CONNECTION AT WL1, STA. 11+80.78 WITH CLEAN SWABBED PIPE.
- CONSTRUCT LINE NO. 1 FROM STA. 0+60.00 TO STA. 0+00.00 WITH CLEAN SWABBED PIPE. CLOSE EXISTING 16" LINE VALVE (NO. 41626 - 119TH ST. & PAWNEE). REMOVE EXISTING BLOWOFF ASSEMBLY (STA. 0+00.00) AND CONNECT NEW PIPE TO EXISTING MAIN.
- OPEN 16" VALVE (NO. 41626 - PAWNEE & 119TH ST.)
- CONSTRUCT LINE NO. 2 FROM STA. 0+00.00 TO STA. 0+90.00. INSTALL TEMPORARY BLOWOFF (0+90.00)
- TEST, DISINFECT, AND FLUSH LINE NO. 2 PER SPECIFICATIONS.
- CLOSE EXISTING 8" VALVE (NO. 31613 - DORA & 119TH ST.) AND INSTALL LINE NO. 2 FROM STA. 0+90.00 TO STA. 0+95.89 WITH CLEAN SWABBED PIPE.
- OPEN VALVE NO. 31613.



119TH STREET WEST - GRANT TO CARR WATERLINE IMPROVEMENTS
KEY MAP AND GENERAL NOTES
JAMES L. ARMOUR, P.E. - CITY ENGINEER
CITY OF WICHITA PROJECT NO. 448-90507
Professional Engineering Consultants, P.A.
303 S. TOPEKA • WICHITA, KANSAS 67202
316-262-2691 • FAX 316-262-9003
Designed by MDK Job No. 35-08208-001 Sht. B2 of 15
Drawn by TDS Date April 2010