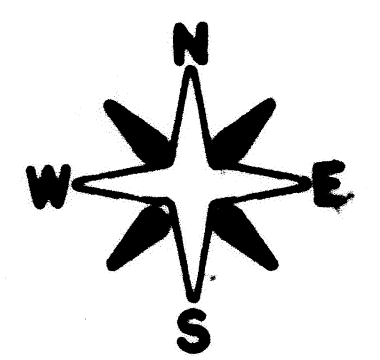
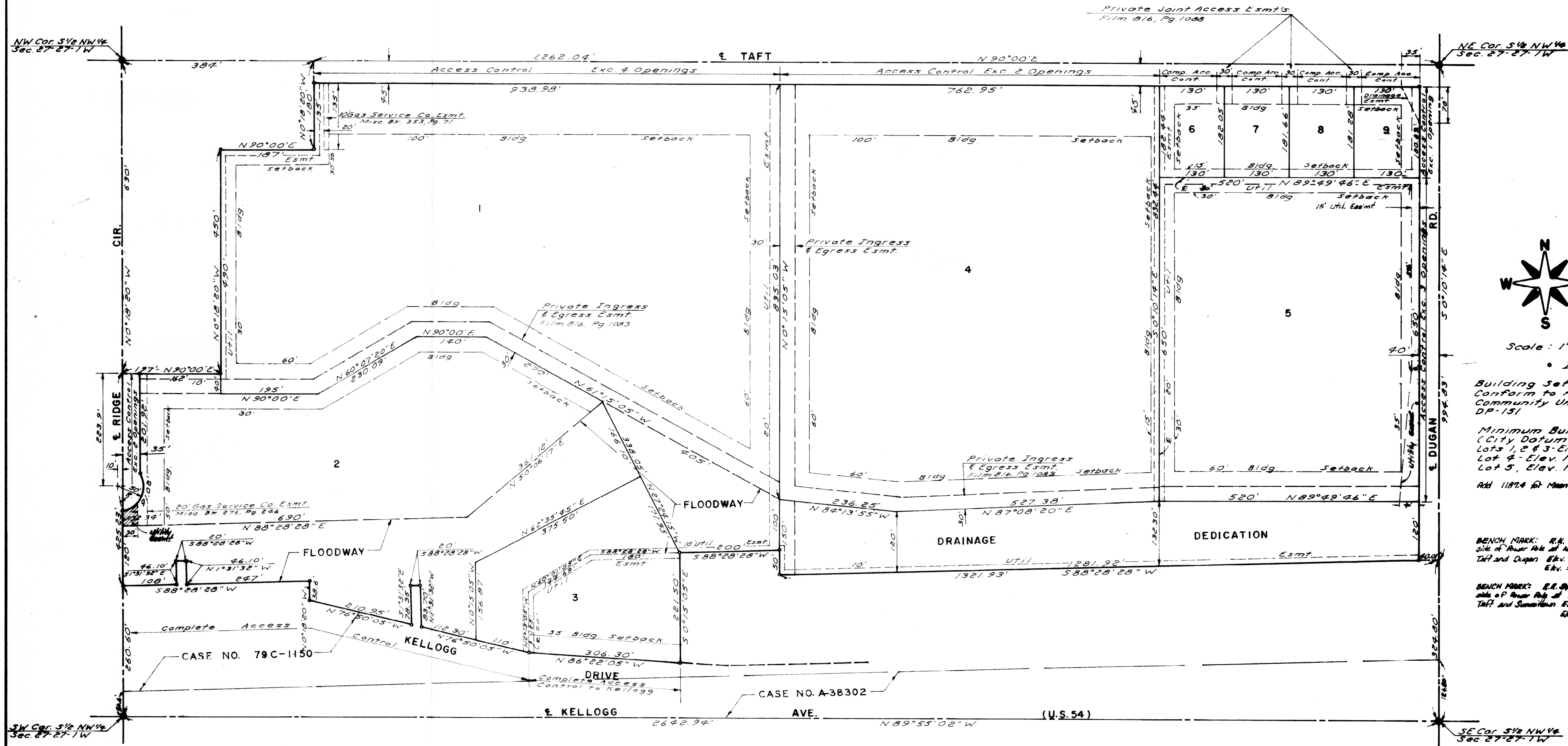


THE DUGAN CENTRE

AN ADDITION TO WICHITA, KANSAS



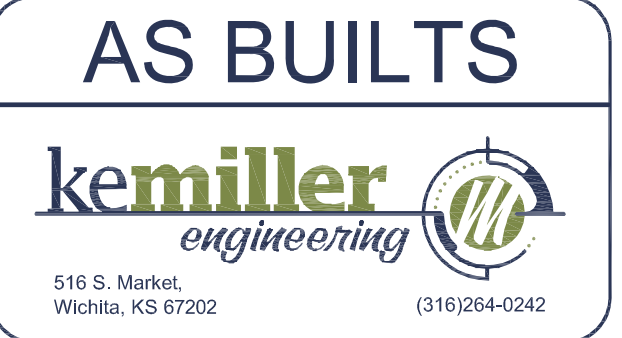
Scale: 1" = 100'

Building Setbacks to Conform to Associated Community Unit Plan DP-151

Minimum Building Pads:
 (City Datum)
 Lots 1, 2 & 3 - Elev. 131.3
 Lot 4 - Elev. 123.0
 Lot 5 - Elev. 122.3
 Add 1187.4 for Mean Sea Level

BENCH MARK: R.R. Spike in S. side of Power Pole at N.W. Cor. of Taft and Dugan Elev. = 120.37 C.D. Elev. = 1307.79 MSL.

BENCH MARK: R.R. Spike in S.E. side of Power Pole at N.W. Cor. of Taft and Sumner Elev. = 120.67 C.D. Elev. = 1307.47 MSL.

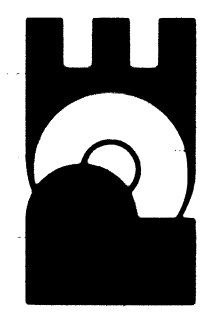


SHEET 1 OF 2

Restrictive Covenant F-821 Pg 774

PART OF LOT 5, THE DUGAN CENTRE
 PRIVATE PROJECT FIRE LINE
 PLAT
 CITY OF WICHITA, KANSAS
 JAMES L. ARMOUR, P.E. - CITY ENGINEER
 PROJECT NO. 1570 PPW OCA NO. (607853)

POE & ASSOCIATES, INC.
 CONSULTING ENGINEERS
 5940 E. Central, Suite 200 Wichita, KS 67208-4242
 Phone: 316.685-4114 FAX: 316.685-4444



FINAL
 Engineer: J. Dickman
 Designer: S. SCHMIDT
 P.O. Job No.: 1898-00156
 Date: DECEMBER 2010