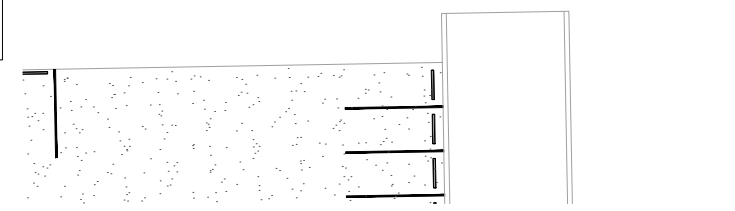


SWS 3 Sta. **32+13.03**
 Match Line
 N 20442.11
 E 19218.90



Install 286.41 L.F. of 18" RCP
 SWS Pipe @ 0.3% Slope.

SWS 3 Sta. **35+86.41** **34+99.44**
 Install 2'x4' Area Inlet
 End SWS Line No. 3
 PR Top Inlet Elev.= 1278.40
 PR Inlet FL Elev.= 1275.40
 PR 18" RCP FL Out Elev.(S)=1275.40
 N 20728.52 (Point on SW Corner
 E 19216.93 Inside Face of Inlet)
 N 20728.52 (Point on SE Corner
 E 19220.93 Inside Face of Inlet)

UTILITY LEGEND

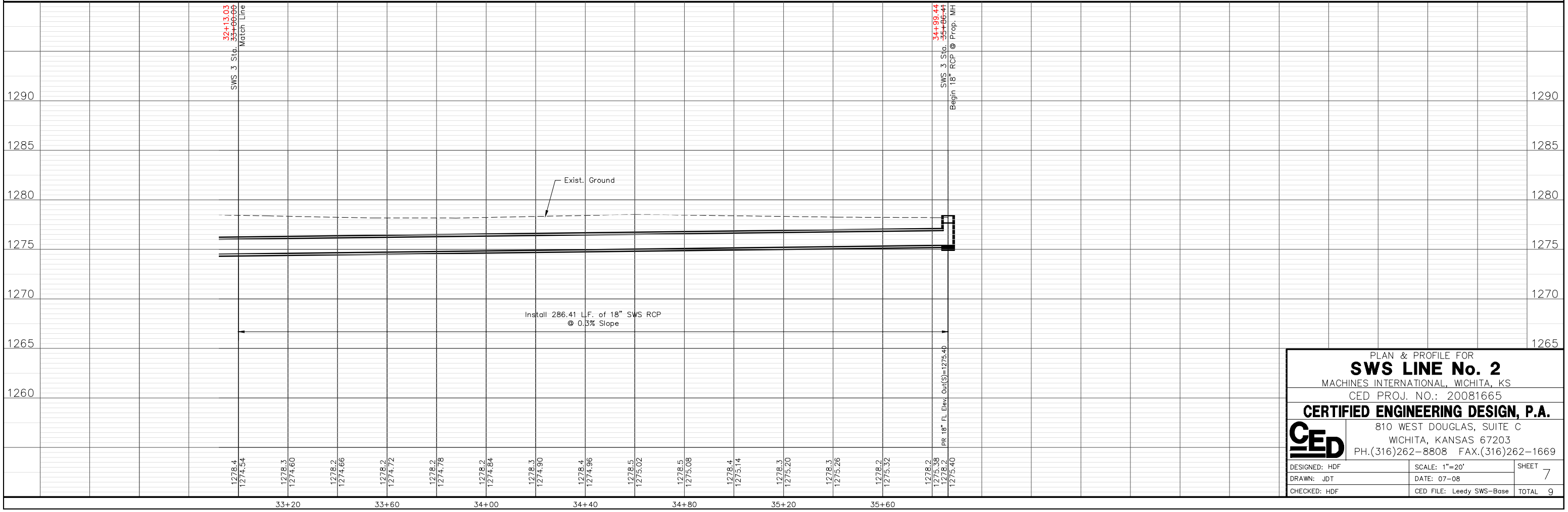
= Fire Hydrant	= Flag Pole
= Water Meter	= SS Manhole
= Water Valve	= SWS Manhole
= Gas Meter	= Sign
= Gas Valve	= Misc. Post
= Telephone Riser	= Guy Anchor
= Mailbox	= Light Pole
= Deciduous Tree or Shrub	
= Existing Fence	
= Right of Way Line	
= Underground Telephone	
= Underground Electric	
= Overhead Electric	
= Water Line	
= Sanitary Sewer	
= Gas Line	
= Cable TV or Fiber Optic	

AS BUILT PLANS
 CONTRACTOR: UTILITIES PLUS
 INSPECTOR: J. HAYES, C.E.D.
 PDF BY: CC_5-23-2011

ON SITE B.M.: R.R. Spike in Power Pole
 41.1' W. of S.E. Cor. of Subject Property.
 Elev.=93.20 (City Datum)

UTILITIES SHOWN REPRESENT THE BEST INFORMATION AVAILABLE FOR DESIGN. ADDITIONAL UTILITIES MAY BE PRESENT ON THIS PROJECT. THE CONTRACTOR SHALL BE RESPONSIBLE FOR DETERMINING THE EXACT LOCATION, DEPTH AND SIZE OF ALL UNDERGROUND UTILITIES PRIOR TO CONSTRUCTION. THE CONTRACTOR SHALL BE LIABLE FOR ANY DAMAGE CAUSED BY THE FAILURE TO DO SO.

STORM WATER SEWER LINE No. 3



PLAN & PROFILE FOR
SWS LINE No. 2
 MACHINES INTERNATIONAL, WICHITA, KS
 CED PROJ. NO.: 20081665
CERTIFIED ENGINEERING DESIGN, P.A.
 810 WEST DOUGLAS, SUITE C
 WICHITA, KANSAS 67203
 PH.(316)262-8808 FAX.(316)262-1669

DESIGNED: HDF	SCALE: 1"=20'	SHEET
DRAWN: JDT	DATE: 07-08	7
CHECKED: HDF	CED FILE: Leedy SWS-Base	TOTAL 9