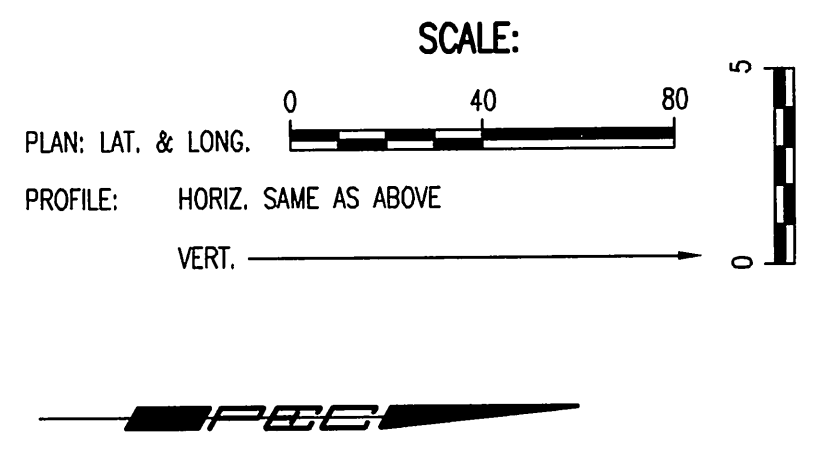
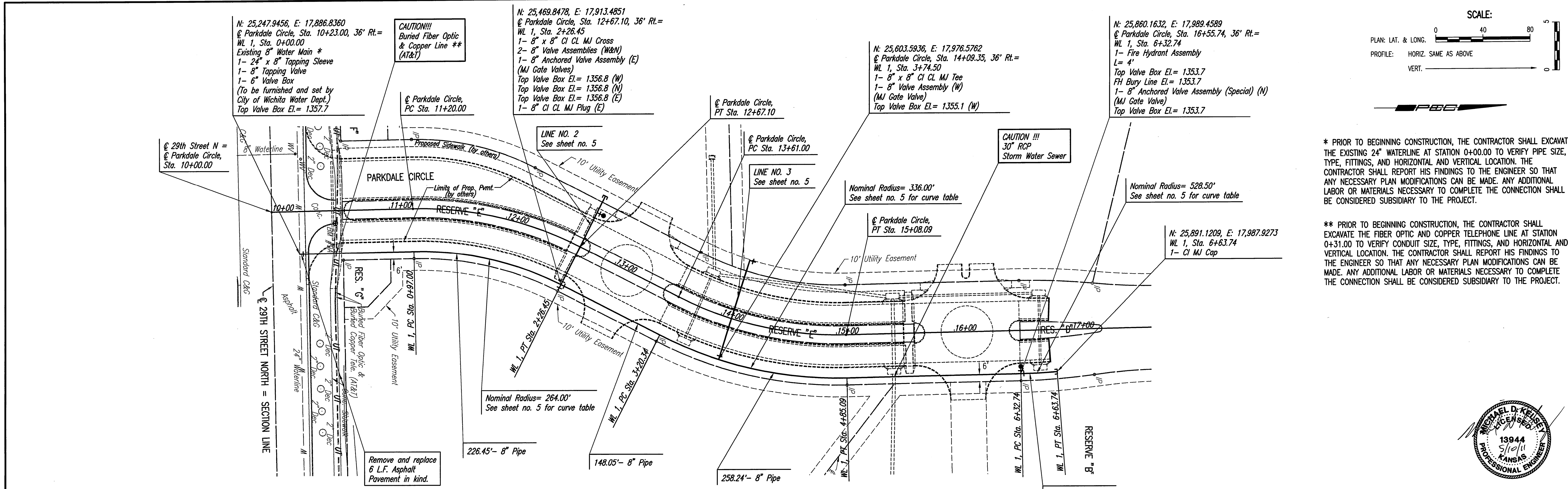


PLAN	CHECKED	CHECKED
BY		
DATE		

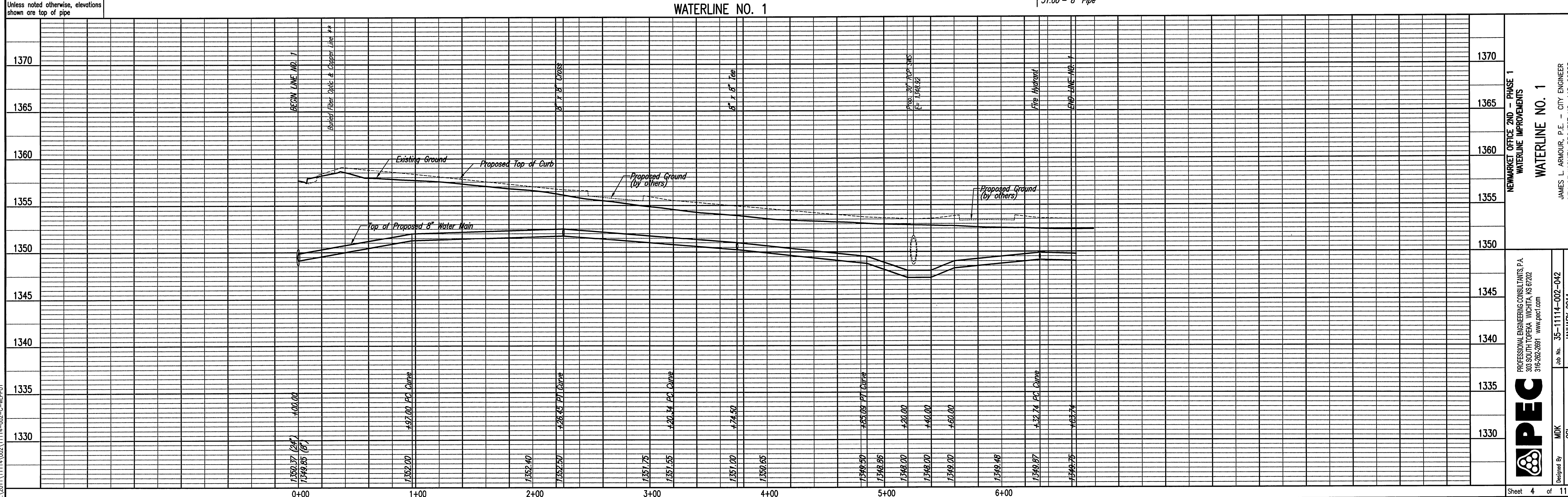
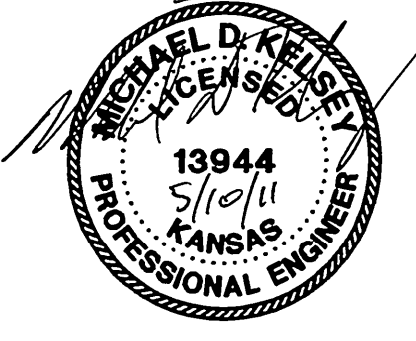
PROFILE	CHECKED	CHECKED
BY		
DATE		

Saved 05-09-2011 13:16 PM by RFL
 Plot Scale 1:40 05-09-2011 2:56:46 PM by RFL
 C:\2011\1114\02\1114-02-C-IMP.Plot



* PRIOR TO BEGINNING CONSTRUCTION, THE CONTRACTOR SHALL EXCAVATE THE EXISTING 24" WATERLINE AT STATION 0+00.00 TO VERIFY PIPE SIZE, TYPE, FITTINGS, AND HORIZONTAL AND VERTICAL LOCATION. THE CONTRACTOR SHALL REPORT HIS FINDINGS TO THE ENGINEER SO THAT ANY NECESSARY PLAN MODIFICATIONS CAN BE MADE. ANY ADDITIONAL LABOR OR MATERIALS NECESSARY TO COMPLETE THE CONNECTION SHALL BE CONSIDERED SUBSIDIARY TO THE PROJECT.

** PRIOR TO BEGINNING CONSTRUCTION, THE CONTRACTOR SHALL EXCAVATE THE FIBER OPTIC AND COPPER TELEPHONE LINE AT STATION 0+31.00 TO VERIFY CONDUIT SIZE, TYPE, FITTINGS, AND HORIZONTAL AND VERTICAL LOCATION. THE CONTRACTOR SHALL REPORT HIS FINDINGS TO THE ENGINEER SO THAT ANY NECESSARY PLAN MODIFICATIONS CAN BE MADE. ANY ADDITIONAL LABOR OR MATERIALS NECESSARY TO COMPLETE THE CONNECTION SHALL BE CONSIDERED SUBSIDIARY TO THE PROJECT.



NEWMARKET OFFICE 2ND - PHASE 1
 WATERLINE IMPROVEMENTS
 WATERLINE NO. 1
 JAMES L. ARMOUR, P.E. - CITY ENGINEER
 CITY OF WICHITA PROJECT NO. 448-90523

PROFESSIONAL ENGINEERING CONSULTANTS, P.A.
 303 SOUTH TOPEKA WICHITA, KS 67202
 316-262-2881 www.pec.com

PEC

Designed By: MDK
 Drawn By: CSL
 Job No. 35-11114-002-042
 Date: JANUARY 2011

Sheet 4 of 11