

**GENERAL NOTES**

- ALL ELEVATIONS SHOWN ARE NAVD88. (NAVD88 -0.47' (0.143 METERS, PER VERTCON FROM NGS WEBSITE) TO NGVD29 - 1187.4=CITY DATUM).
- THE CONTRACTOR SHALL NOT START WORK ON THE PROJECT UNTIL THE PROJECT INSPECTOR IS ASSIGNED AND IS PRESENT ON THE SITE. ANY WORK DONE WITHOUT INSPECTION WILL BE REQUIRED TO BE UNCOVERED FOR INSPECTION.
- ALL CONSTRUCTION WORK AND MATERIAL IN THIS PROJECT SHALL COMPLY WITH CITY OF WICHITA STANDARD SPECIFICATIONS FOR THE CONSTRUCTION OF CITY PROJECTS UNLESS OTHERWISE NOTED IN THE PLANS OR SPECIAL PROVISIONS.
- UNDERGROUND UTILITY SERVICE LINES AND OVERHEAD UTILITY POLE LINES ARE TO BE ADJUSTED AS NECESSARY BY OTHERS PRIOR TO CONSTRUCTION UNLESS THE PLANS SPECIFICALLY CALL FOR THEIR ADJUSTMENT BY THE CONTRACTOR. EXISTING UTILITIES AND THEIR LOCATION, AS SHOWN ON THE PLANS, REPRESENT THE BEST INFORMATION OBTAINABLE FOR DESIGN. LOCATION INFORMATION HAS BEEN OBTAINED FROM THE VARIOUS UTILITY COMPANIES AND IS EITHER FROM COMPANY RECORD DRAWINGS OR COMPANY PROVIDED FIELD LOCATIONS. THE CONTRACTOR WILL BE REQUIRED TO WORK AROUND EXISTING UTILITIES WITHIN THE RIGHT-OF-WAY WHICH DO NOT CONFLICT WITH PROPOSED CONSTRUCTION.
- TREES AND SHRUBS IN PUBLIC RIGHT-OF-WAY WHICH ARE IN DIRECT CONFLICT WITH PROPOSED NEW CONSTRUCTION SHALL BE REMOVED BY THE CONTRACTOR WITH THE ENGINEER'S APPROVAL. TREES AND SHRUBS WHICH ARE NOT IN DIRECT CONFLICT WITH PROPOSED NEW CONSTRUCTION SHALL BE SAVED AND PROTECTED FROM DAMAGE.
- RUBBLE FROM THE REMOVAL OF MISCELLANEOUS STRUCTURES SHALL BE DISPOSED OF ON SITES TO BE PROVIDED BY THE CONTRACTOR AND APPROVED AS NOTED BELOW.
- ALL DISPOSAL SITES MUST BE APPROVED BY THE KANSAS DEPARTMENT OF HEALTH AND ENVIRONMENT. MATERIAL EITHER STOCKPILED OR DISPOSED OF IN A FLOOD PLAIN WOULD REQUIRE A KANSAS STATE BOARD OF AGRICULTURE PERMIT. ANY MATERIAL DUMPED IN WATERS OF THE UNITED STATES OR WETLANDS IS SUBJECT TO U.S. CORPS OF ENGINEERS PERMITTING REGULATIONS. ANY MATERIAL BURIED OR STOCKPILED BEYOND APPROVED CONSTRUCTION LIMITS WOULD REQUIRE ADDITIONAL ARCHEOLOGICAL INVESTIGATIONS UNLESS BURIED IN A PREVIOUSLY APPROVED BORROW LOCATION.
- EACH BIDDER SHALL VISIT THE SITE OF THE PROJECT BEFORE SUBMITTING THE PROPOSAL FOR THIS WORK SO THAT HE WILL BE FULLY INFORMED OF THE EXISTING FIELD CONDITIONS AND THE OBSTACLES WHICH MIGHT BE ENCOUNTERED. UPON AWARD OF THE CONTRACT THE CONTRACTOR WILL NOT BE GRANTED ANY ADDITIONAL COMPENSATION WITH REGARDS TO TIME AND MONEY FOR CONDITIONS THAT MAY HAVE BEEN EVALUATED DURING ANY INSPECTION OF THE SITE.
- FIELD LOCATE ALL EXISTING UTILITIES PRIOR TO BEGINNING ANY EXCAVATION WORK. CONTACT THE KANSAS ONE-CALL SYSTEM AT (316) 887-2470 AT LEAST 72 HOURS IN ADVANCE TO REQUEST FIELD LOCATES. FOR UTILITIES THAT ARE NOT MEMBERS OF THE KANSAS-ONE-CALL SYSTEM, CONTACT THOSE COMPANIES DIRECTLY.
- THE LUMP SUM BID ITEM "SITE RESTORATION" SHALL INCLUDE, BUT NOT BE LIMITED TO MOBILIZATION, REMOVAL OF MINOR OBSTRUCTIONS, REMOVAL AND SALVAGE OF CONFLICTING PRIVATE IMPROVEMENTS WITHIN THE PROJECT AREA, MINOR SHAPING AND GRADING OF SLOPES FOR FINISHED APPEARANCE, REMOVAL OF CONSTRUCTION DEBRIS, REMOVAL OF TREES WITHIN CONSTRUCTION LIMITS, AND GENERAL CLEAN-UP.
- THE CONTRACTOR SHALL BE RESPONSIBLE FOR PRESERVING PROPERTY IRONS. THE CONTRACTOR WILL BE REQUIRED TO RE-ESTABLISH ANY PROPERTY IRONS WHICH ARE DAMAGED OR DESTROYED BY HIS CONSTRUCTION OPERATIONS, OR WHICH ARE COVERED BY 12" OR MORE OF FILL MATERIAL BY THIS PROJECT. SUCH IRONS SHALL BE RE-ESTABLISHED BY A LICENSED LAND SURVEYOR IN ACCORDANCE WITH STATE LAWS AND AT NO ADDITIONAL COST TO THE CITY.
- THE CONTRACTOR SHALL APPLY TEMPORARY SEED AND MULCH TO ALL UNPAVED AREAS DISTURBED BY HIS CONSTRUCTION OPERATIONS WITHIN 14 DAYS AFTER SUCH OPERATIONS CEASE IN ACCORDANCE WITH THE STANDARD SPECIFICATIONS. SEED SHALL BE ANNUAL RYE APPLIED AT THE RATE OF 4 LBS. PER 1,000 SQUARE FEET. MULCH SHALL BE PRAIRIE HAY APPLIED AT THE RATE OF 15 BALES PER ACRE. THIS WORK SHALL BE PAID FOR AT THE CONTRACT LUMP SUM PRICE BID FOR "TEMPORARY PROJECT SEEDING".
- IN THE PROPER SEASON, CONTRACTOR SHALL APPLY PERMANENT SEED, FERTILIZER, AND MULCH TO ALL UNPAVED AREAS DISTURBED BY CONSTRUCTION WITHIN LOT 1, BLOCK 1, NEWMARKET OFFICE 2ND. THE SEED MIX AND APPLICATION RATES ARE PROVIDED IN THE TABLE BELOW. RECEIVING PERMANENT SEED SHALL BE MULCHED IN ACCORDANCE WITH CITY OF WICHITA STANDARD SPECIFICATIONS.
- EROSION CONTROL (BMP'S) THE CONTRACTOR SHALL INSTALL AND/OR MAINTAIN EROSION CONTROL METHODS AS SPECIFIED ON THE EROSION CONTROL PLAN CONTAINED HEREIN. THE FOLLOWING QUANTITIES ARE ESTIMATED, AND SHOULD BE CONSIDERED THE MINIMUM EFFORT REQUIRED. INSTALLATION OF THESE BMP'S DOES NOT RELIEVE THE CONTRACTOR OF THE RESPONSIBILITY OF ABATING SOIL EROSION.
 

SILT FENCE BARRIER	1,737 L.F.
STABILIZED CONSTRUCTION ENTRANCE	1 EACH
DITCH CHECKS	3 EACH
- THE CONTRACTOR SHALL GIVE ALL PROPERTY OWNERS AND/OR TENANTS OF DEVELOPED PROPERTY ABUTTING THE CONSTRUCTION OF THIS PROJECT A MINIMUM OF 10 DAYS ADVANCE NOTICE PRIOR TO START OF CONSTRUCTION IN THE VICINITY OF THE AFFECTED PROPERTY.
- THE CONTRACTOR SHALL REMOVE EXISTING ROAD SIGNS THAT INTERFERE WITH CONSTRUCTION. SIGNS DAMAGED THRU NEGLIGENCE OF THE CONTRACTOR SHALL BE REPLACED BY THE CONTRACTOR AT NO COST TO THE CITY. THE CONTRACTOR SHALL STOCKPILE THE SIGNS ALONG THE R/W (AT A CENTRAL LOCATION) FOR REMOVAL BY CITY FORCES.
- CONTRACTOR SHALL SUPPLY, INSTALL, AND MAINTAIN CONSTRUCTION TRAFFIC CONTROL AS NECESSARY TO PROTECT THE TRAVELING PUBLIC. ALL TRAFFIC CONTROL DEVICES, AND THE INSTALLATION AND USE THEREOF, SHALL CONFORM TO THE REQUIREMENTS OF THE MANUAL ON UNIFORM TRAFFIC CONTROL DEVICES (MUTCD), LATEST EDITION. ALL DEVICES SHALL BE REFLECTORIZED. CONSTRUCTION TRAFFIC CONTROL SHALL BE SUBSIDIARY TO OTHER BID ITEMS OF WORK.
- WATER FOR EARTHWORK SHALL BE CONSIDERED SUBSIDIARY TO "UNCLASSIFIED EXCAVATION".
- PRIOR TO CONSTRUCTION, THE CONTRACTOR SHALL RE-ESTABLISH CONTROL POINTS AND BENCH MARKS AND VERIFY THEIR ACCURACY.
- CONTRACTOR SHALL CONTACT THE DEVELOPER AT LEAST FOURTEEN (14) DAYS PRIOR TO COMPLETION OF THE POND SEALING SO PREPARATIONS CAN BE MADE FOR FILLING THE PONDS. ALL REQUIREMENTS FOR POND SEALING MUST BE MET PRIOR TO FILLING THE PONDS.

SCALE: 1" = 100'


**CONTROL POINTS**

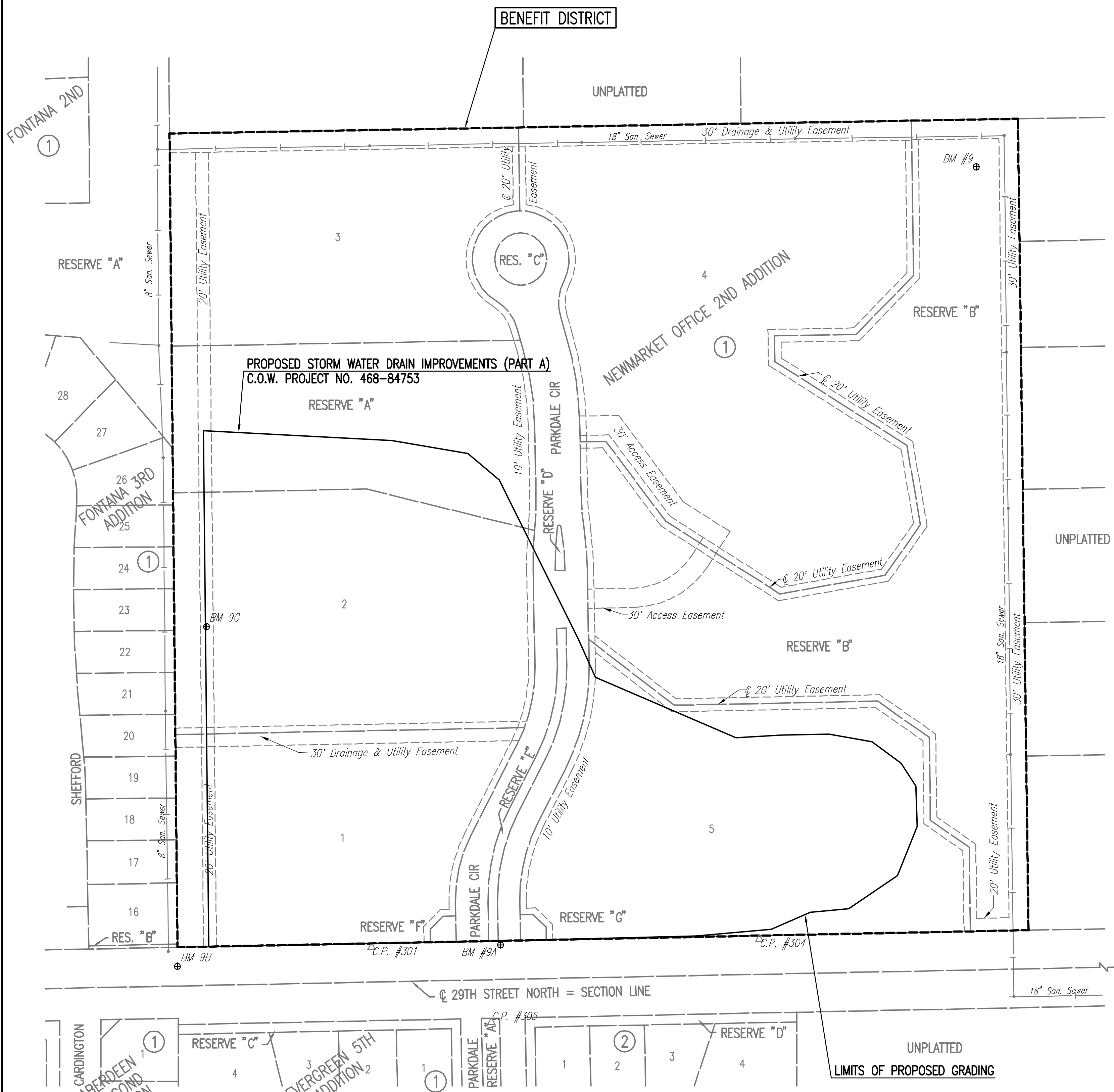
- Pt. No. 301  
N-25,274.497856, E-17,660.897304  
#4 REBAR  
1. 0.2' N. TO SOUTH EDGE OF SIDEWALK ON NORTH SIDE OF 29TH NORTH OF EAST END OF 12 ROW OF MAPLE TREES  
2. 180' N. TO CENTERLINE OF CURB ISLAND SOUTH, 29TH AND PARKDALE
- Pt. No. 304  
N-25,287.2755, E-18,262.727002  
#4 REBAR AT NORTH EDGE OF SIDEWALK ON NORTH SIDE OF 29TH  
1. 0.1' E. OF CONCRETE JOINT IN SIDEWALK NORTH OF WEST END OF ROW OF MAPLE TREES  
2. ±400' E. TO RCBC AT SOUTHEAST CORNER OF PLAT
- Pt. No. 305  
N-25,157.815546, E-17,846.590275  
#4 REBAR  
1. 3.5' N. TO BACK OF CURB AT NORTH END OF CURB ISLAND IN CENTERLINE OF PARKDALE AND SOUTH SIDE OF 29TH STREET  
2. 2.8' S. TO CENTER OF TRAFFIC SIGN POST

EARTHWORK SUMMARY (C.Y.)		
	Unclassified Excavation	Fill**
Site Grading (Lots 1, 2 and 5)	24,150	19,320
<b>TOTALS</b>	<b>24,150</b>	<b>19,320</b>

\*\*FOR INFORMATION ONLY-NOT A PAY ITEM. NO SHRINKAGE FACTOR HAS BEEN APPLIED.  
ESTIMATED WASTE MATERIAL AT PROJECT COMPLETION=  
24,150 - (19,320/0.80) = 0 C.Y.  
VMF = 0.80 (ASSUMED)  
WASTE MATERIAL SHALL BE SPREAD ON PROJECT SITE, BLADED SMOOTH AND SLOPED TO DRAIN.  
THE CONTRACTOR SHALL SATISFY THEMSELVES WITH THE EARTHWORK QUANTITIES AND NOTIFY THE ENGINEER OF ANY DISCREPANCIES. NO CHANGE ORDER FOR EARTHWORK WILL BE APPROVED.  
CADD FILES FOR THE SITE GRADING WILL BE MADE AVAILABLE UPON REQUEST.

SEE SHEET NO. 3 & 4 FOR PLAT COORDINATES

No.	Revision	By	Date
NEWMARKET OFFICE 2ND STORM WATER DRAIN NO. 376 (PART A) <b>KEY MAP AND GENERAL NOTES</b> JAMES L. ARMOUR, P.E.- CITY ENGINEER CITY OF WICHITA PROJ. NO. 468-84753  PROFESSIONAL ENGINEERING CONSULTANTS, P.A. 303 SOUTH TOPEKA WICHITA, KS 67202 316-262-2891 www.pec1.com			
Designed by	BMM, JAG	Job No. 35-11114-003	Sht. 2 of 10
Drawn by	BJS	Date January 2011	



**BENCHMARK LIST**

- BM #9 - T-POST 70' +/- W AND 75' S OF THE NE CORNER, SW 1/4, SE 1/4, SEC. 31, T26S, R1W. ELEV. 1351.58 (NAVD 88)
- BM #9A - CHISELED "d" AT THE NE CORNER OF THE CONCRETE DRIVE APPROACH, ON THE S SIDE OF THE SIDEWALK ON THE N SIDE OF 29TH STREET N, AT THE INTERSECTION OF 29TH AND PARKDALE. ELEV. 1359.26 (NAVD 88)
- BM #9B - SET CHISELED "d" AT THE TOP OF THE CURB ON THE N CURB OF 29TH STREET N, ADJACENT TO THE S 1/4 COR. 31-T26S-R1W. ELEV. 1365.00 (NAVD 88)
- BM #9C - SET "T" POST AT THE E TOE OF THE BERM. ELEV. 1358.00 (NAVD 88)

Served 05-10-2011 1:23:03 PM by BJS  
 Plot Scale 1:100 05-10-2011 2:11:12 PM by BJS  
 C:\2011\11114\003\PART A\11114-003-002L-Key Map