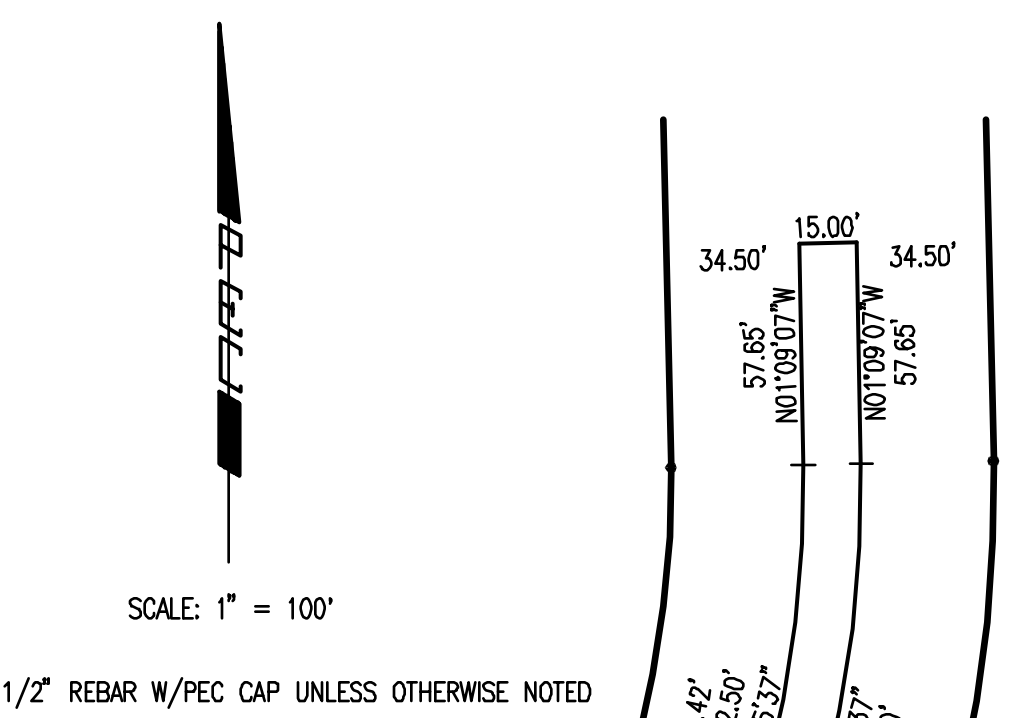
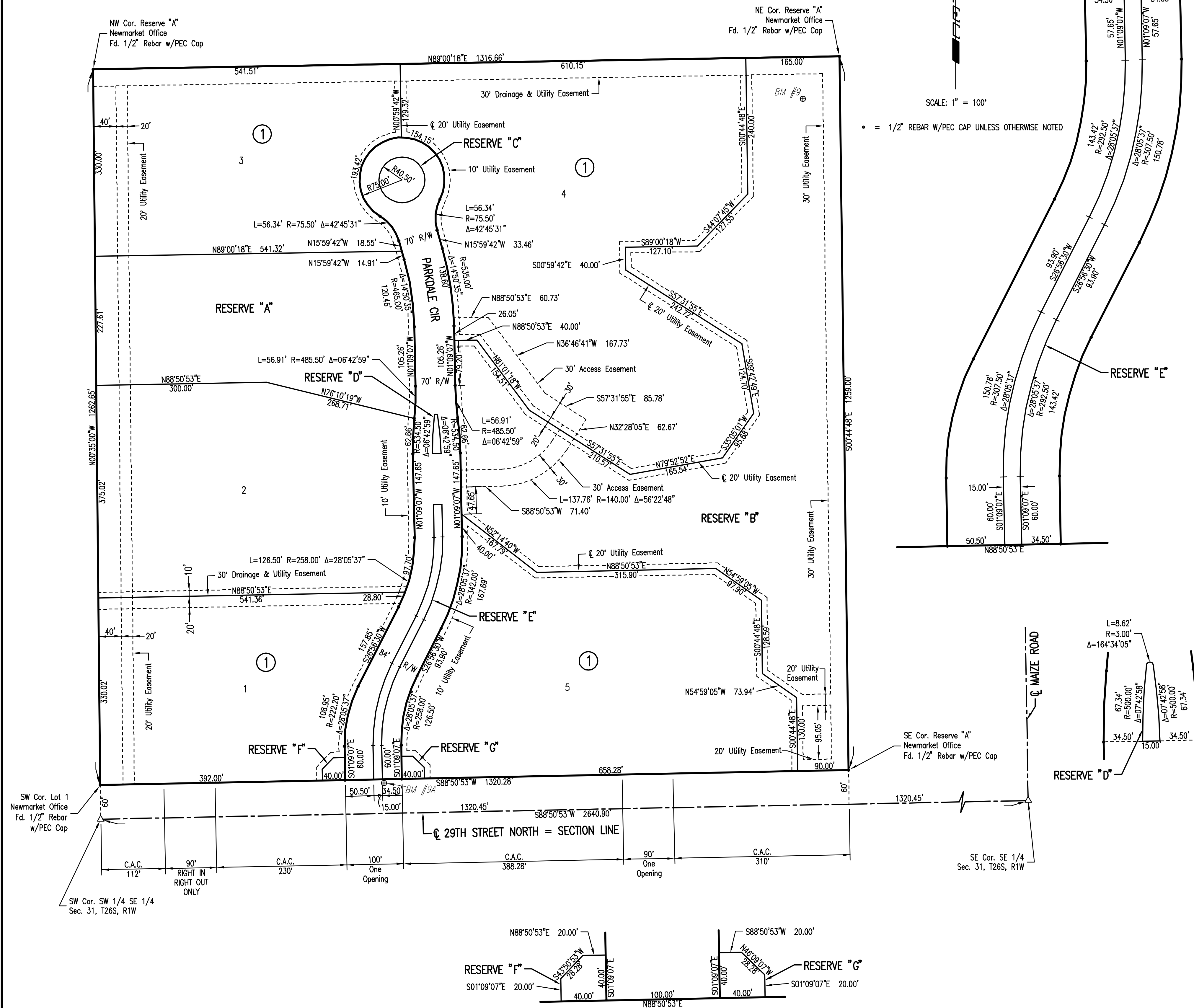


# NEWMARKET OFFICE 2ND

## AN ADDITION TO WICHITA, SEDGWICK COUNTY, KANSAS



Saved: 05-02-2011 3:12:43 PM by BJS  
 Plot Scale: 1:100 05-10-2011 2:13:25 PM by BILL J. SEKSON  
 C:\2011\11114\003\PART A\11114-003-035-Final Plot

No.	Revision	By	Date
NEWMARKET OFFICE 2ND STORM WATER DRAIN NO. 376 (PART A)			
<b>PLAT</b>			
JAMES L. ARMOUR, P.E. - CITY ENGINEER CITY OF WICHITA PROJ. NO. 468-84753			
PROFESSIONAL ENGINEERING CONSULTANTS, P.A. 303 SOUTH TOPEKA WICHITA, KS 67202 316-262-2891 www.pec1.com			
Designed by	BMM, JAG	Job No.	35-11114-003
Drawn by	BJS	Date	January 2011
			Sht. 3 of 10