

SANITARY SEWER PLANS (PUBLIC)

TO SERVE



MARKET STORE #5860-00

HARRY STREET & WEBB ROAD
WICHITA, SEDGWICK COUNTY, KANSAS
CITY OF WICHITA PRIVATE PROJECT NO.

2089PPS (607861)

2011

INDEX OF SHEET (PUBLIC)

C-13.1	TITLE SHEET
C-13.2	SANITARY SEWER LOCATION PLAN
C-13.3	SANITARY SEWER PLAN & PROFILE
C-13.4	SANITARY SEWER DETAILS
C-13.5	STANDARD TYPE 'P' MANHOLES DETAILS
C-13.6	STANDARD & LIGHT WEIGHT MANHOLE FRAME & COVER

OWNERS' ADDRESS

WALMART STORES, INC.
702 S.W. 8th STREET
BENTONVILLE, AR 72716
PH. (479) 273-4000

CITY RESOURCE LIST

CITY MANAGER CITY MANAGER'S OFFICE CITY OF WICHITA 455 N. MAIN - CITY HALL WICHITA, KS 67202 CONTACT: ROBERT LAYTON PH: (316) 268-4351 FAX: (316) 858-7712	CITY ENGINEER PUBLIC WORKS CITY OF WICHITA 455 N. MAIN - CITY HALL WICHITA, KS 67202 CONTACT: JIM ARMOUR PH: (316) 268-4266 FAX: (316) 268-4114	PLANNING / ZONING METROPOLITAN AREA PLANNING DEPARTMENT CITY OF WICHITA 455 N. MAIN - CITY HALL WICHITA, KANSAS 67202 CONTACT: BILL LONGNECKER PH: (316) 268-4494 FAX: (316) 268-4390
--	---	--

APPROVED AS NOTED
BY CITY ENGINEER OF WICHITA,
BY WICHITA WATER & SEWER DEPARTMENT,
& BY WICHITA FIRE DEPARTMENT

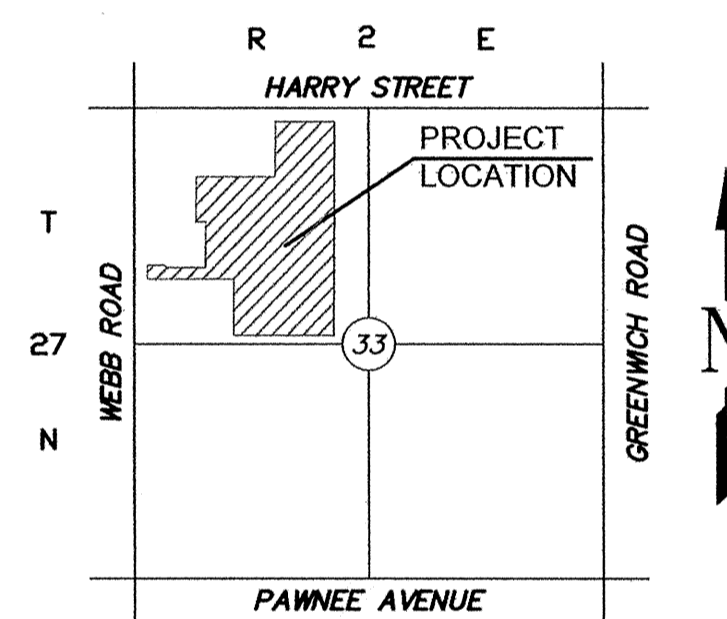
Public Works J. Haynes 3-11-11
Water & Sewer N/A
Fire N/A

NOTE TO CONTRACTORS
Public Property:

Inspection and testing for the waterline is to be provided by a Licensed Consulting Engineering Firm under contract with the Owner/Developer. Said inspection to be in accordance with the City of Wichita standard construction engineering practices and certified by a Professional Engineer Licensed in the state of Kansas. No work shall be performed in dedicated easements or public right-of-way by the Contractor without such inspection nor shall any work be commenced without written authorization by the City Engineer. All Construction and Materials shall comply with the City or Wichita Specifications and Standards (on file and available in the City Engineer's Office).

Private Property:

Installation and testing for the fire protection line is to be performed by a City of Wichita licensed fire protection contractor in accordance with the fire codes as adopted by the City of Wichita. All material and construction practices for the fire protection line shall comply with the fire codes as adopted by the City of Wichita (available from the City of Wichita Fire Department). The Contractor shall not commence work without notification and approval of the Wichita Fire Department. Inspection of the fire protection line is to be provided by a licensed Engineering Firm under contract with the Owner/Developer and the Fire Department. The contractor shall not start work until the project inspector is assigned to the project and present on the site. Any work done without inspection will be required to be uncovered for inspection.



LOCATION MAP
NOT TO SCALE

(1) An effort has been made to locate and show approximate location of underground utility lines. Buried utilities are not necessarily shown. It is the Contractors responsibility to locate and preserve all utility services.

(2) Proposed utility services have been coordinated with the local utility companies. Contractor is responsible for contacting all utility companies prior to construction.

(3) All quantity estimates shown in this set of plans are the Engineer's estimate and are provided for general information only! The contractor is solely responsible for calculating his/her own quantities!

(4) Contractor shall acquire Licensing to work in City of Wichita, shall maintain Insurance Verification per Walmart and City's requirements and shall submit necessary bonds to satisfy City of Wichita's requirements.

NOTE TO CONTRACTOR
CALL KANSAS ONE
1-800-522-6543

This number is to be used for information on the location of all underground utilities. Contact this number prior to any excavation.

ALERT TO CONTRACTOR:

1. THE SITEWORK FOR THE WALMART PORTION OF THIS PROJECT SHALL MEET OR EXCEED THE "SITE SPECIFIC SPECIFICATIONS."
2. ALL NECESSARY INSPECTIONS AND/OR CERTIFICATIONS REQUIRED BY CODES AND/OR UTILITY SERVICE COMPANIES SHALL BE PERFORMED PRIOR TO CONTRACT COMPLETION AND THE FINAL CONNECTION OF SERVICES.

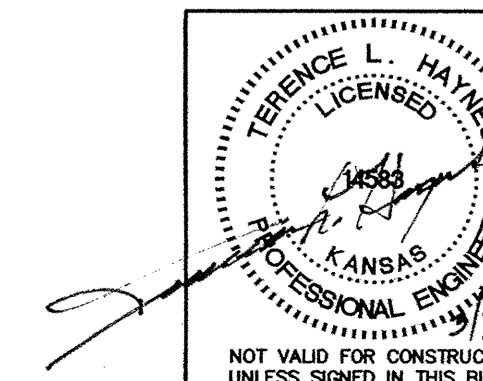
BENCH MARKS:

BM #1 "a" CHISELED ON TOP OF CURB ELEV=1354.80	BM #2 "a" CHISELED ON TOP OF CURB ELEV=1361.16
--	--

I, Terence L. Haynes, Kansas Professional Engineer, #14583, do hereby state that these Public Sanitary Sewer Line plans & Private Sanitary Sewer Line plans, prepared by me or under my direct, responsible supervision, are in strict conformance with the applicable Codes of the City of Wichita and the sound principles and practice of the Civil Engineering profession

Terence L. Haynes 03/11
TERENCE L. HAYNES, P.E. #14583

TITLE SHEET	
PUBLIC SANITARY SEWER PLANS	
MARKET STORE #5860-00	
HARRY STREET & WEBB ROAD WICHITA, KANSAS	
SMC Consulting Engineers, P.C. 815 West Main - Oklahoma City, OK 73106 PH: 405-232-7715 Fax: 405-232-7859	
KANSAS CERTIFICATE OF AUTHORIZATION NO. E-335 EXP. Dec. 31, 2011	
No.	Revision
1	Revised per City's comments
2	MM OIB REVIEW
3	MM OIB
4	Revised per City's comments
DATE:	10/04/10
DRAWN BY:	KST
PROJECT NO.:	4946.00
SCALE:	NTS
SHEET NO.	C-13.1
ENGINEER:	TERENCE L. HAYNES, P.E. #14583



SMC Consulting Engineers, P.C.

Oklahoma City, Oklahoma