

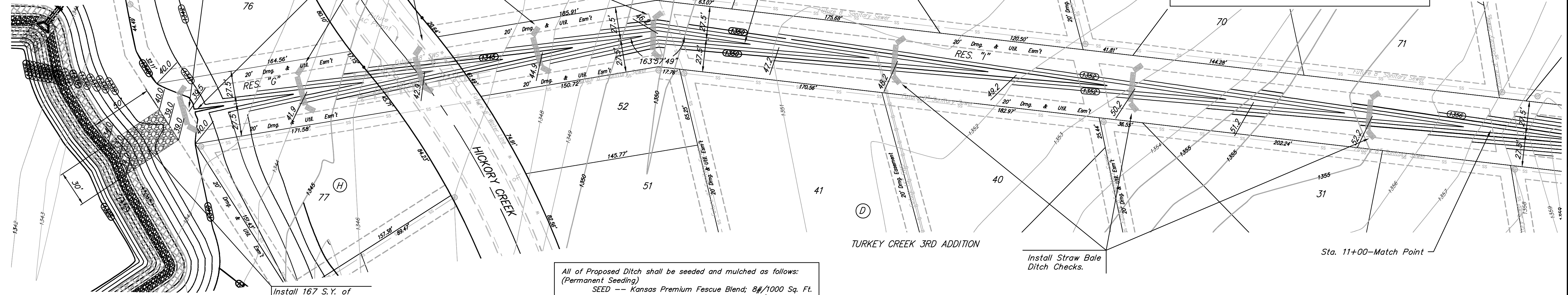
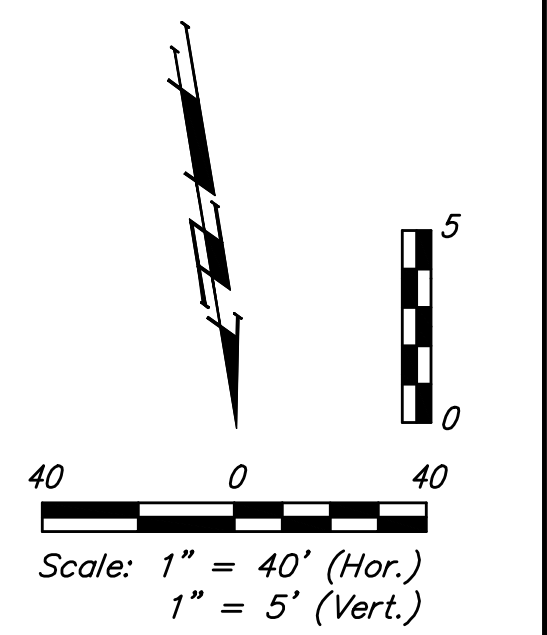
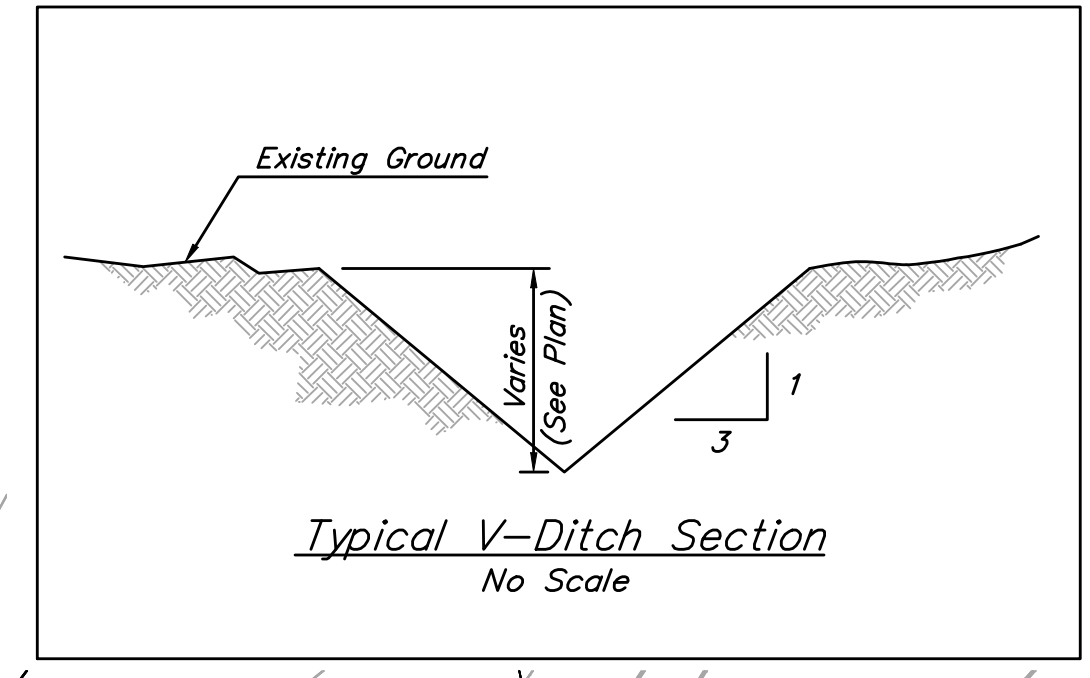
Benchmarks:
 BM #1: 135th St. W. & Pawnee—
 City of Wichita Benchmark Disc,
 Northeast corner of intersection on
 SW corner of concrete base of high
 line pole.
 Elev. = 1359.65 NGVD29

BM #2: City of Wichita Benchmark
 Disc, 0.4 Mi. South of Kellogg on
 135th St. W., west side of concrete
 base for high line pole, west of
 K.C.&E. Substation, 135± south of
 railroad tracks on east side of
 135th St. W.
 Elev. = 1367.77 NGVD29

TURKEY CREEK 3RD ADDITION

Install Straw Bale
 Ditch Checks.

Construct V-Ditch
 with 3:1 Sideslopes
 per detail, this sheet



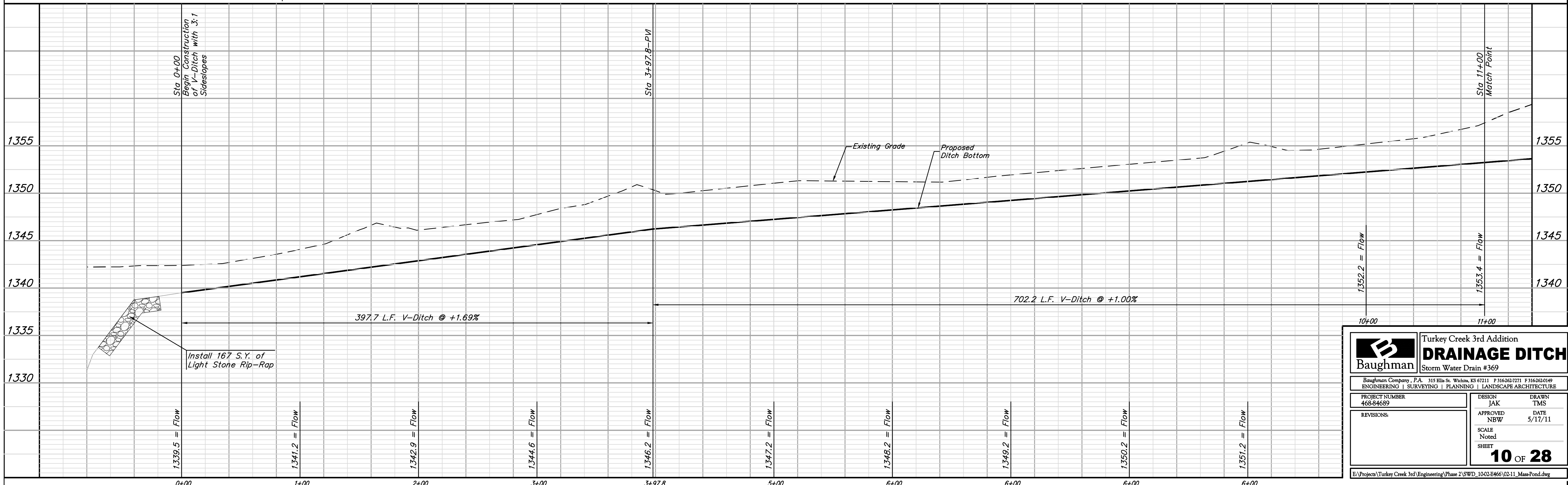
Sta 0+00
 Begin Construction
 of V-Ditch with 3:1
 Sideslopes

Install 167 S.Y. of
 Light Stone Rip-Rap
 Depress Centerline of
 rip-rap section 1' as
 Indicated.

All of Proposed Ditch shall be seeded and mulched as follows:
 (Permanent Seeding)
 SEED -- Kansas Premium Fescue Blend; 8#/1000 Sq. Ft.
 FERTILIZER -- 12-24-12 Ratio at 350 Lbs./Ac.
 MULCH -- 2 Tons Prairie Hay / Acre

Install Straw Bale
 Ditch Checks.

Sta. 11+00—Match Point



		Turkey Creek 3rd Addition	
		DRAINAGE DITCH	
Storm Water Drain #369			
<small>Baughman Company, P.A. 315 Ellis St. Wichita, KS 67211 P 316-262-7271 F 316-262-0149 ENGINEERING SURVEYING PLANNING LANDSCAPE ARCHITECTURE</small>			
PROJECT NUMBER 468-84689	DESIGN JAK	DRAWN TMS	
APPROVED NBW	DATE 5/17/11	SCALE Noted	SHEET
		10 OF 28	