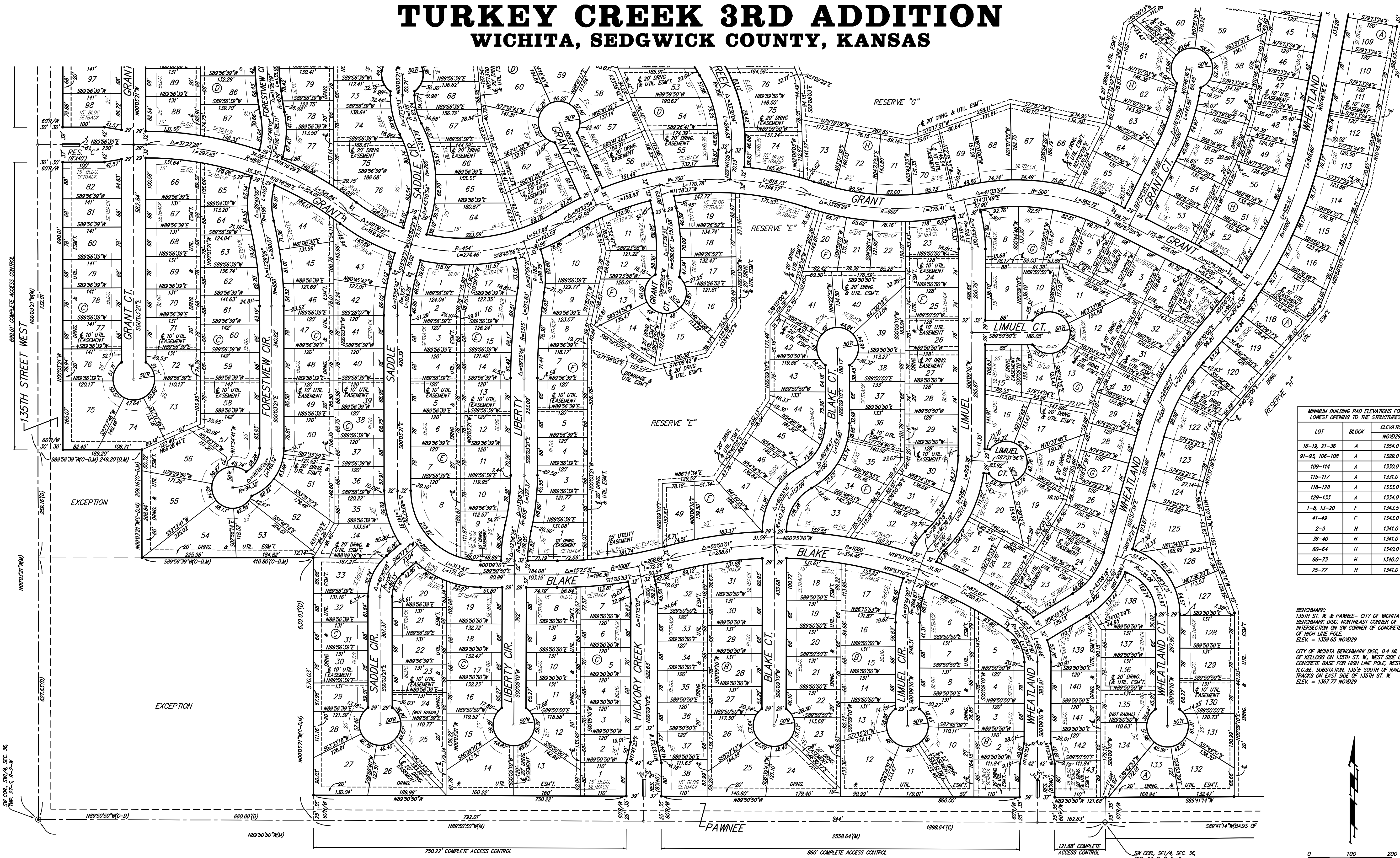


TURKEY CREEK 3RD ADDITION

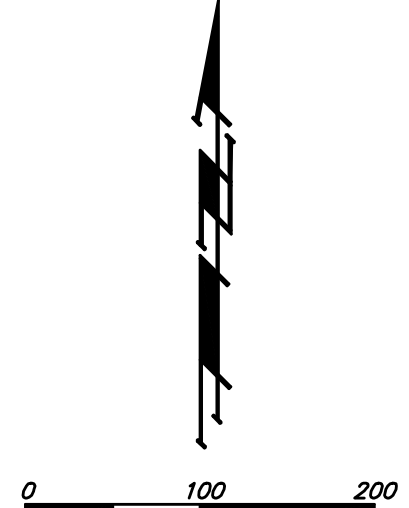
WICHITA, SEDGWICK COUNTY, KANSAS



LOT	BLOCK	ELEVATION
16-19, 21-36	A	1354.0
91-93, 106-108	A	1329.0
109-114	A	1330.0
115-117	A	1331.0
118-128	A	1333.0
129-133	A	1334.0
1-8, 13-20	F	1343.5
41-49	F	1343.0
2-9	H	1341.0
36-40	H	1341.0
60-64	H	1340.0
66-73	H	1340.0
75-77	H	1341.0

BENCHMARK:
 135TH ST. W. & PAWNEE - CITY OF WICHITA
 BENCHMARK DISC. NORTHEAST CORNER OF
 INTERSECTION ON SW CORNER OF CONCRETE BASE OF
 HIGH LINE POLE.
 ELEV. = 1359.63 NVD29

**CITY OF WICHITA BENCHMARK DISC. 0.4 MI. SOUTH
 OF KELLOGG ON 135TH ST. W. WEST SIDE OF
 CONCRETE BASE FOR HIGH LINE POLE, WEST OF
 K.G.B. SUBSTATION, 1.35 MI. SOUTH OF RAILROAD
 TRACKS ON EAST SIDE OF 135TH ST. W.
 ELEV. = 1367.77 NVD29**



NOTE:
 A master grading plan for drainage has been developed for this subdivision and is on file with the City of Wichita, Kansas. All drainage easements, right-of-ways, or reserves shall remain of established grades or as modified with the approval of the City Engineer of the City of Wichita, Kansas. No obstructions which impede the flow of this drainage system shall be allowed.

- (M) = MEASURED
- (D) = DESCRIBED
- (P) = PLATTED
- (C) = CALCULATED
- (C-D) = CALCULATED PER DESCRIBED INFO.
- (C-P) = CALCULATED PER PLATTED INFO.
- ⊕ = #4 REBAR W/ "BAUGHMAN" CAP (SET)
- ⊙ = BOLT OVER STONE (FOUND)
- ⊚ = 1 1/2" IRON W/ THIMBLE (FOUND)
- ⊛ = 1" IRON IN BROKEN STONE (FOUND)
- ⊜ = #5 REBAR IN THIMBLE (FOUND)
- ⊝ = 1" SQUARE PIN OVER STONE (FOUND)
- ⊞ = 3/4" IRON (FOUND)
- ⊟ = 1/2" IRON (FOUND)

SHEET
27 OF 28

Baughman Company, P.A.
 Baughman
 315 Ells St. Wichita, KS 67211 F 316-263-7271 F 316-263-0149
 ENGINEERING | SURVEYING | PLANNING | LANDSCAPE ARCHITECTURE
 F:\PLAT\TURKEYCREEK3RD\DWG\TURKEYCREEK3RD.DWG