

PRIVATE STORM WATER SEWER EXTENSIONS

TO SERVE

BLDG. 22 AND 23 AT NEWMARKET SQUARE

LOT 1, BLOCK 1, NEWMARKET SQUARE PHASE III ADDITION

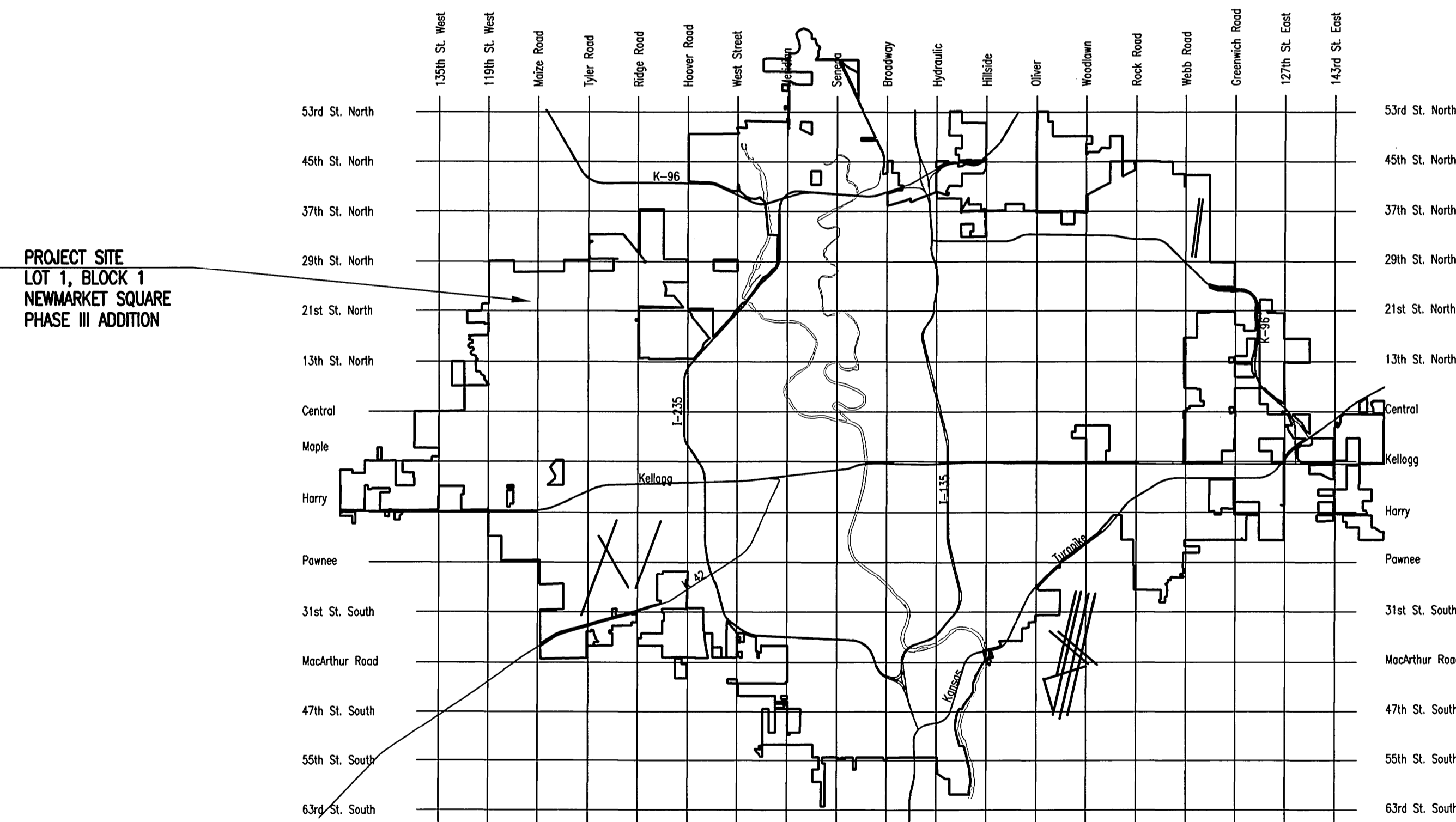
PRIVATE PROJECT NO. 2093 PPS (607861)

CITY OF WICHITA, KANSAS

JAMES L. ARMOUR, P.E. - CITY ENGINEER

INDEX OF SHEETS

SHEET NO. C3.1	TITLE SHEET
SHEET NO. C3.2	KEY MAP AND GENERAL NOTES
SHEET NO. C3.3	PLAN/PLAN
SHEET NO. C3.4	STANDARD TYPE "P" MANHOLES
SHEET NO. C3.5	MANHOLE FRAME AND COVER
SHEET NO. C3.6	PLAT
SHEET NO. C3.7	SOIL EROSION BMP'S



LOCATION MAP

APPROVED AS NOTED
By CITY ENGINEER OF WICHITA

Sanitary Sewers _____

Storm Sewers *Julianne Kellman 2-2-11*

Driveway Approaches _____

Paving _____

NOTE TO CONTRACTOR

INSPECTION AND TESTING FOR THIS PROJECT IS TO BE PROVIDED BY A LICENSED CONSULTING ENGINEERING FIRM CONTRACTED BY THE OWNER/DEVELOPER. SAID INSPECTION TO BE IN ACCORDANCE WITH THE CITY OF WICHITA STANDARD CONSTRUCTION ENGINEERING PRACTICES AND CERTIFIED BY A LICENSED PROFESSIONAL ENGINEER. NO WORK SHALL BE PERFORMED IN DEDICATED EASEMENTS OR PUBLIC RIGHT-OF-WAY BY THE CONTRACTOR UNTIL SUCH INSPECTION IS ARRANGED FOR AND REQUIRED BONDS HAVE BEEN SUBMITTED TO AND APPROVED BY THE CITY NOR SHALL ANY WORK BE COMMENCED IN DEDICATED EASEMENTS OR PUBLIC RIGHT-OF-WAY WITHOUT WRITTEN AUTHORIZATION BY THE CITY ENGINEER. IMPROVEMENTS PERFORMED UNDER THIS PROJECT SHALL NOT BE ACCEPTED BY THE CITY UNTIL ALL APPLICABLE DOCUMENTATION HAS BEEN SUBMITTED TO THE CITY ENGINEER. THIS MAY INCLUDE: RECORD DRAWINGS, INSPECTION LOGS, TEST DOCUMENTATION, TV TAPES, AND A CERTIFICATE OF COMPLETION. THE ABOVE SHALL BE PERFORMED BY THE CONSULTING FIRM CONTRACTED TO INSPECT THIS PROJECT.

FEBRUARY 2011

PLANS PREPARED BY
PROFESSIONAL ENGINEERING CONSULTANTS, P.A.
 ENGINEERS
 WICHITA, KANSAS



Sewer 02-01-2011 10:30 AM by JAE
 03/20/11 10:35 AM by ARNON L. FARLEY
 03/20/11 10:35 AM by JAE