

PLAN	CHECKED	BY	DATE
	CHECKED		

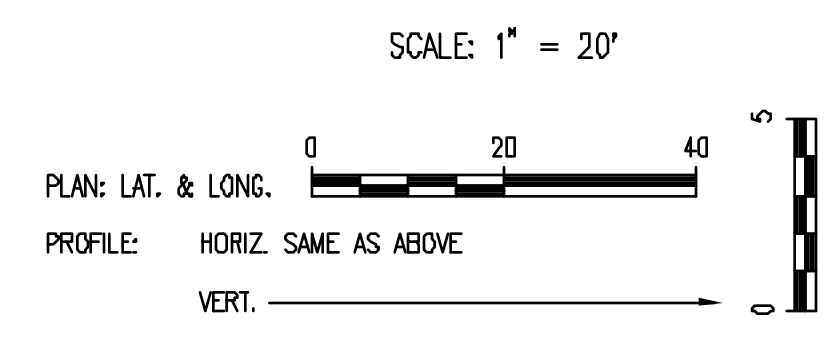
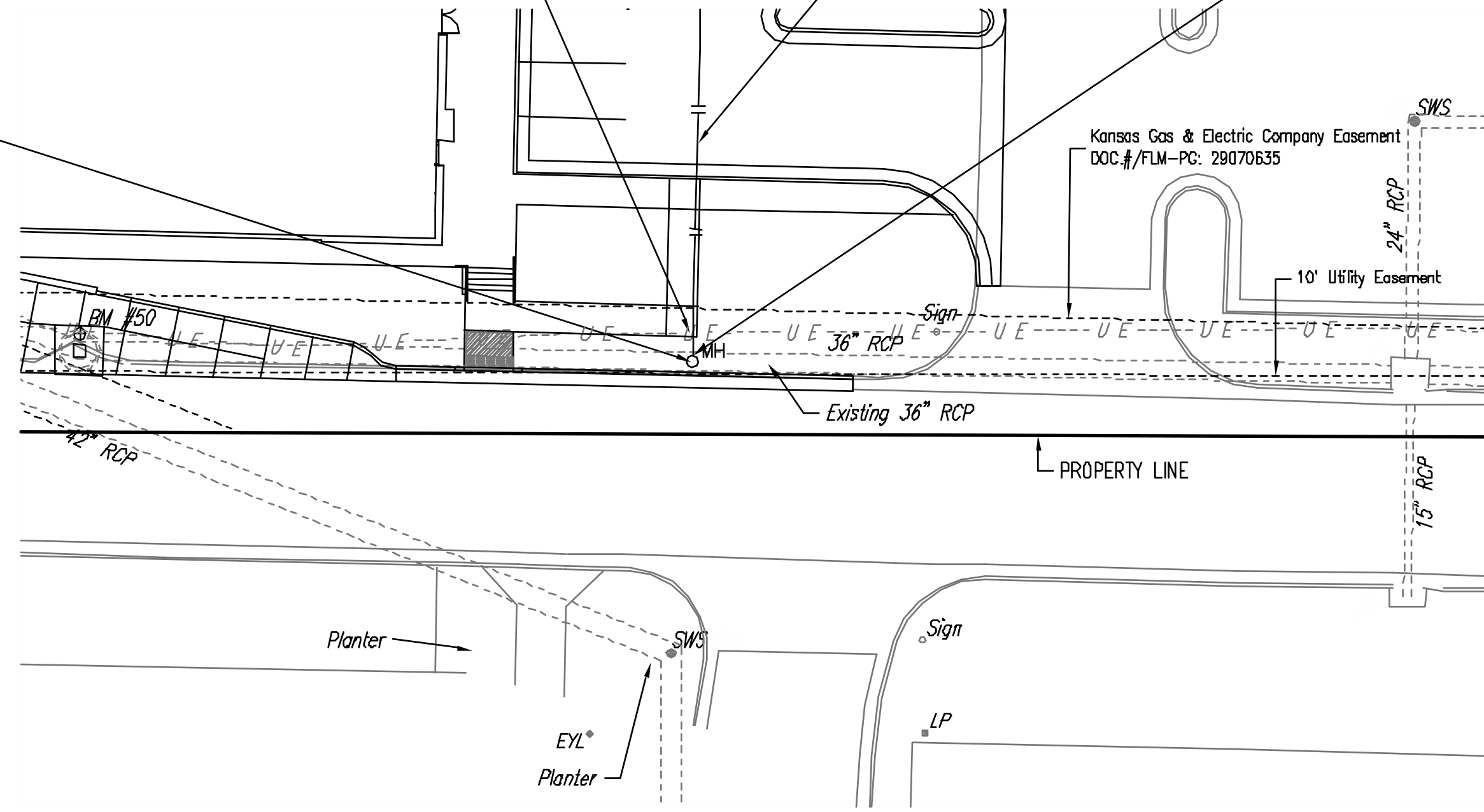
PROFILE	CHECKED	BY	DATE
	CHECKED		

N-7,414.1361, E-4,064.5932  
Sta. 0+00.00  
Const. Type 'D' Manhole over existing  
36" pipe. Remove top half of 36" pipe  
thru MH. Standard MH Shape invert  
to provide smooth flow.  
Dia. = 6'-0"  
Top Elev. 1352.20  
36" RCP FL (W) = 1346.50  
10" PVC FL (N) = 1347.50  
See Details, Sheets C3.4 and C3.5

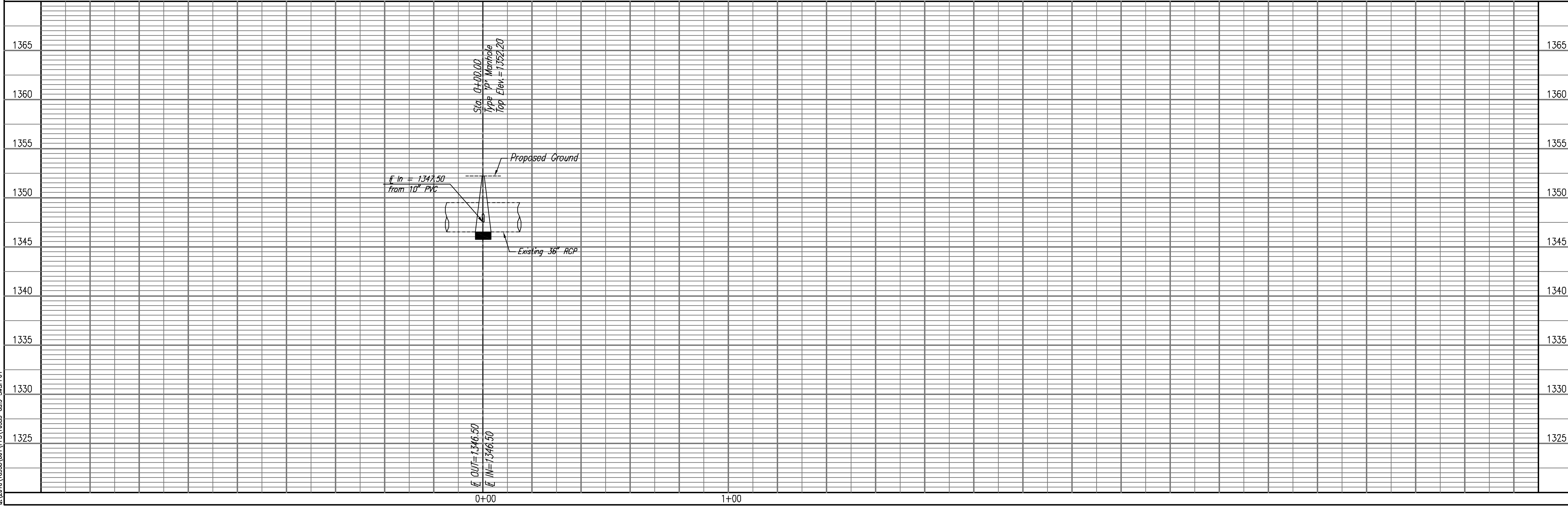
CAUTION !!!  
Buried Electric  
(Westar Energy)

10" PVC SWS Line.  
See Site Utility Plan, Sheet C1.1

Install 10" PVC Stub (N).



SWS MANHOLE



Sta. 0+00.00  
Type 'D' Manhole  
Top Elev. = 1352.20

Proposed Ground

In = 1347.50  
from 10" PVC

Existing 36" RCP

OUT = 1346.50  
IN = 1346.50

0+00 1+00

**Professional Engineering Consultants, P.A.**  
303 S. TORREY WICHITA, KANSAS 67202  
316-262-2691 • FAX 316-262-3633

Job No. 36-10353-001-6364  
Date FEBRUARY 2011

Designed By IDK  
Drawn By AEE

NEWMARKET SQUARE BLDG. 22 AND 23  
PRIVATE STORM WATER SEWER EXTENSIONS

**SWS MANHOLE**

JAMES L. ARMOUR, P.E. - CITY ENGINEER  
CITY OF WICHITA PRIVATE PROJECT NO. 2093 PPS (607861)

Sheet C3.3

Save: 02-01-2011 11:29:29 AM by: AEE  
Plot Scale: 1:20 02-01-2011 1:37:39 PM by: ARON.L. EARLEWINE  
C:\2010\10353\001\PPS\10353-C3.3-SWSPH01