

N: 1,651,512.3575, E: 1,664,293.8051
 WL 1, Sta. 0+00.00
 Existing 8" Water Main *
 1- 36" x 12" Tapping Sleeve
 1- 12" Tapping Valve
 1- 6" Valve Box
 (To be furnished and set by City of Wichita Water Dept.)
 Top Valve Box EL = 1285.8
 Contractor shall reimburse the City of Wichita for this work.

N: 1,651,600.1784, E: 1,664,471.0076
 WL 1, Sta. 1+97.77
 1- 12" 90° RJ Bend
 Defl. = 90°00'00"

N: 1,651,592.1144, E: 1,664,475.0041
 WL 1, Sta. 2+06.77
 1- 12" x 6" Tee
 See Water Meter Vault Detail, sheet no. 5 for continuation.

N: 1,651,570.3870, E: 1,664,485.7721
 WL 1, Sta. 2+31.02
 1- 12" x 6" Tee
 See Water Meter Vault Detail, sheet no. 5 for continuation.

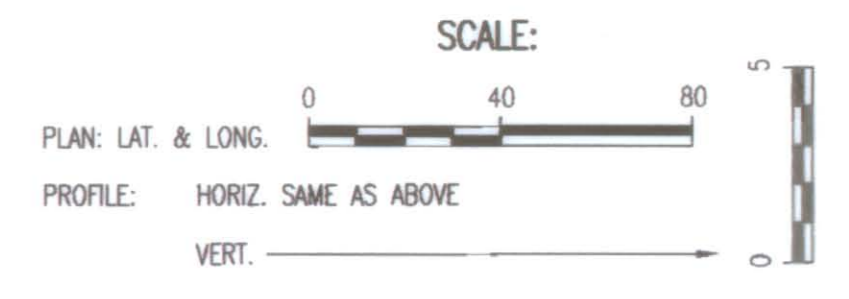
N: 1,651,560.8926, E: 1,664,490.4775
 WL 1, Sta. 2+41.62
 1- 10" Double Check Valve Assembly with Manhole
 See sheet no. 5 for detail.

N: 1,651,551.2852, E: 1,664,495.2389
 WL 1, Sta. 2+53.32
 1- 12" 45° Bend
 Defl. = 43°42'08"

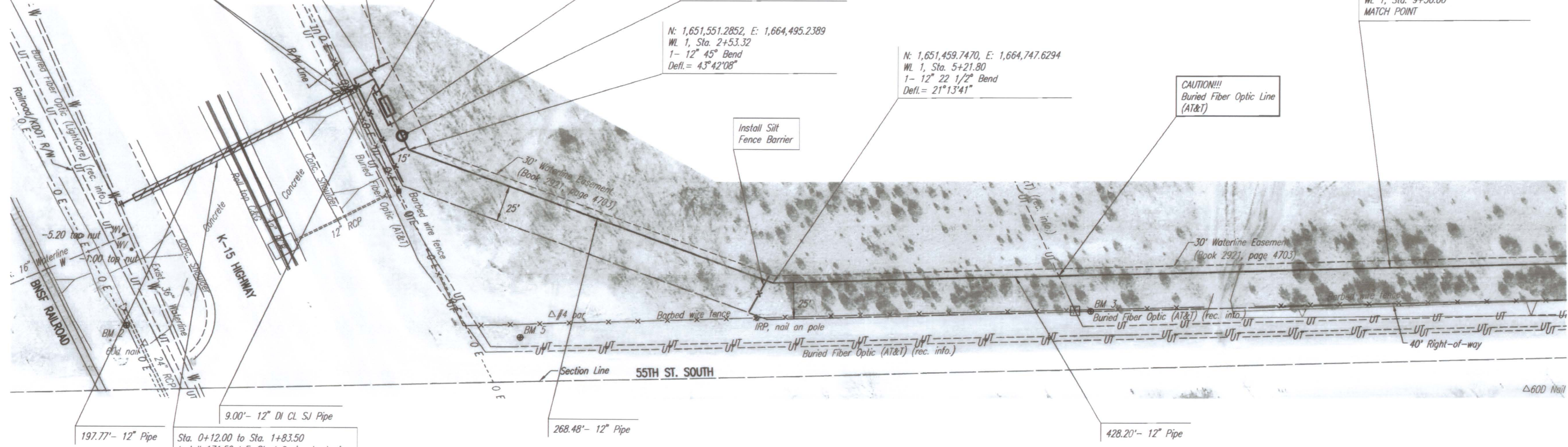
N: 1,651,459.7470, E: 1,664,747.6294
 WL 1, Sta. 5+21.80
 1- 12" 22 1/2° Bend
 Defl. = 21°13'41"

N: 1,651,469.4109, E: 1,665,175.7188
 WL 1, Sta. 9+50.00
 MATCH POINT

* PRIOR TO BEGINNING CONSTRUCTION, THE CONTRACTOR SHALL EXCAVATE THE EXISTING 36" WATERLINE AT STATION 0+00.00 TO VERIFY PIPE SIZE, TYPE, FITTINGS, AND HORIZONTAL AND VERTICAL LOCATION. THE CONTRACTOR SHALL REPORT HIS FINDINGS TO THE ENGINEER SO THAT ANY NECESSARY PLAN MODIFICATIONS CAN BE MADE. ANY ADDITIONAL LABOR OR MATERIALS NECESSARY TO COMPLETE THE CONNECTION SHALL BE CONSIDERED SUBSIDIARY TO THE PROJECT.



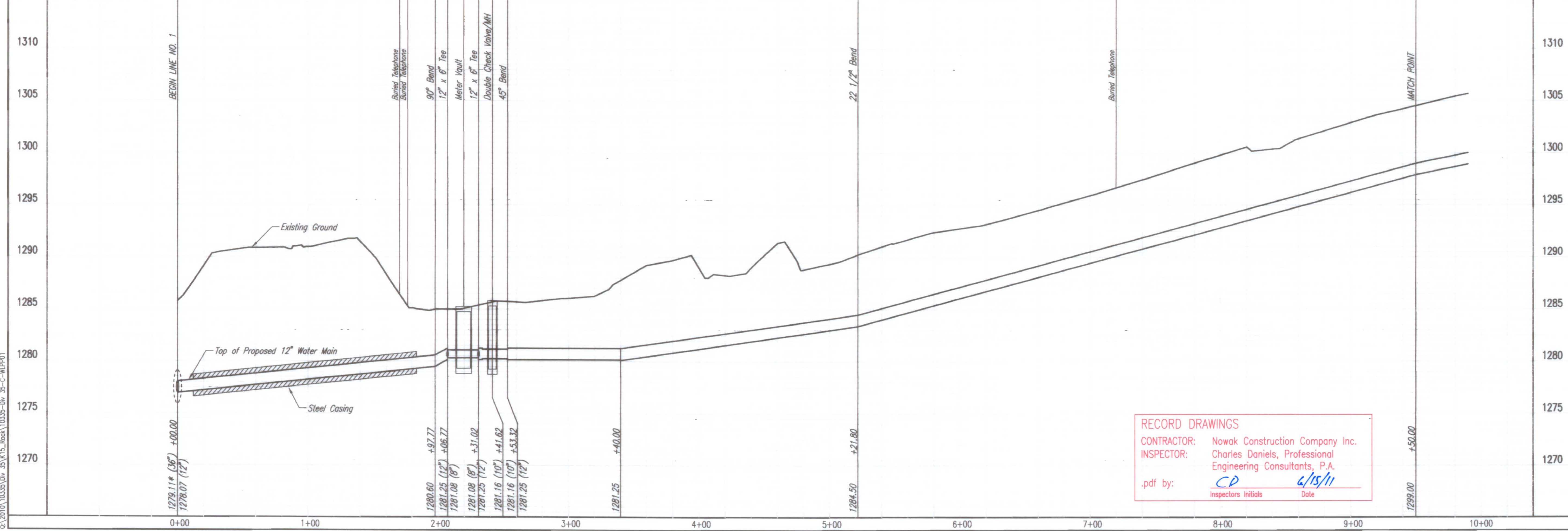
PLAN	CHECKED	DATE
	CHECKED	



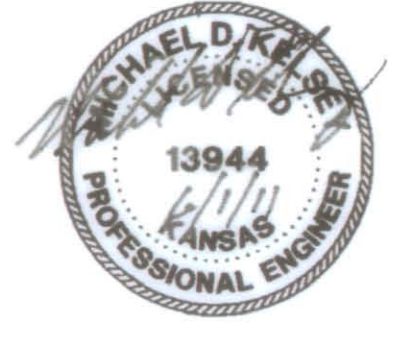
Unless noted otherwise, elevations shown are top of pipe

WATERLINE NO. 1

PROFILE	CHECKED	DATE
	CHECKED	



RECORD DRAWINGS
 CONTRACTOR: Nowak Construction Company Inc.
 INSPECTOR: Charles Daniels, Professional Engineering Consultants, P.A.
 .pdf by: CD 6/15/11
 Inspectors Initials Date



Drawn: 05-31-2011 11:53:27 AM by: MDK
 Checked: 06-01-2011 10:35:55 AM by: CSJ
 Job No.: 35-10335-4597
 Date: APRIL 2011