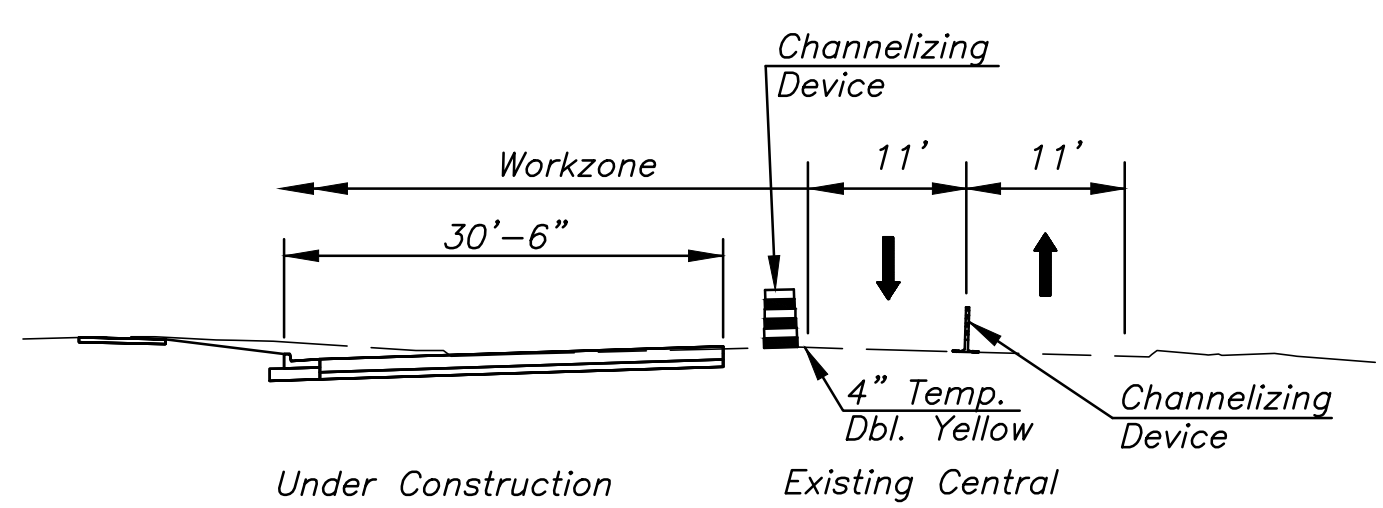
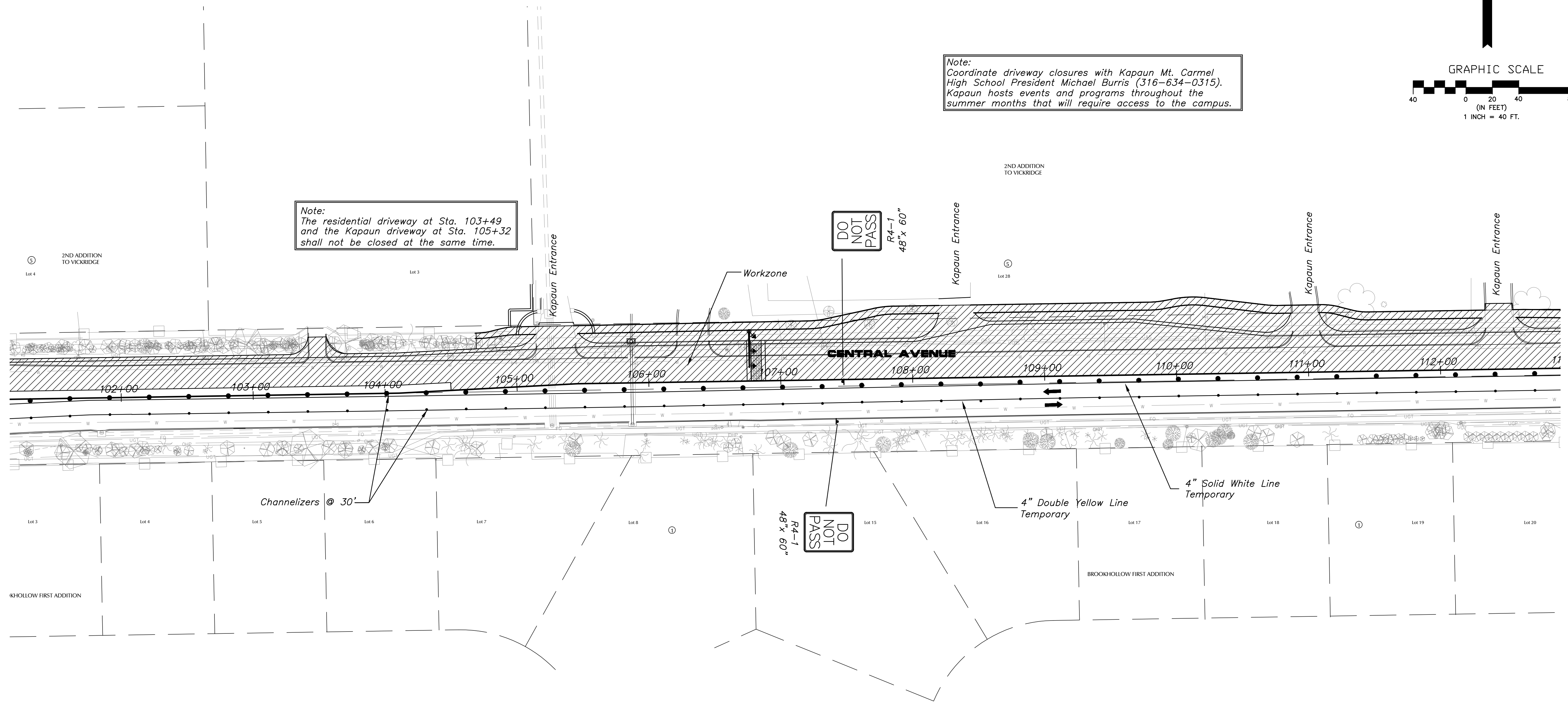


Note:
Coordinate driveway closures with Kapaun Mt. Carmel High School President Michael Burris (316-634-0315). Kapaun hosts events and programs throughout the summer months that will require access to the campus.

Note:
The residential driveway at Sta. 103+49 and the Kapaun driveway at Sta. 105+32 shall not be closed at the same time.

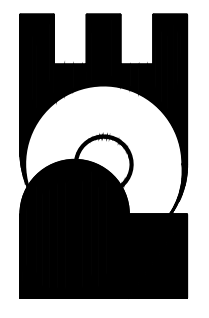


Phase I Traffic Control Section
Looking East

| No. | Date | By | Approved | Revision |
|-----|------|----|----------|----------|
| | | | | |
| | | | | |
| | | | | |

CENTRAL AVENUE
ROCK ROAD TO WEBB ROAD
TRAFFIC CONTROL - PHASE 1
CITY OF WICHITA, KANSAS
JAMES L. ARMOUR, P.E. - CITY ENGINEER

POE & ASSOCIATES, INC.
CONSULTING ENGINEERS
5940 E. Central, Suite 200 • Wichita, KS 67208-4242
Phone 316/685-4114 • FAX 316/685-4444



Engineer: P. FERGUSON
Designer: P. FERGUSON/M. TUCKER
Poe Job No.: 1972
Date: MARCH 2011