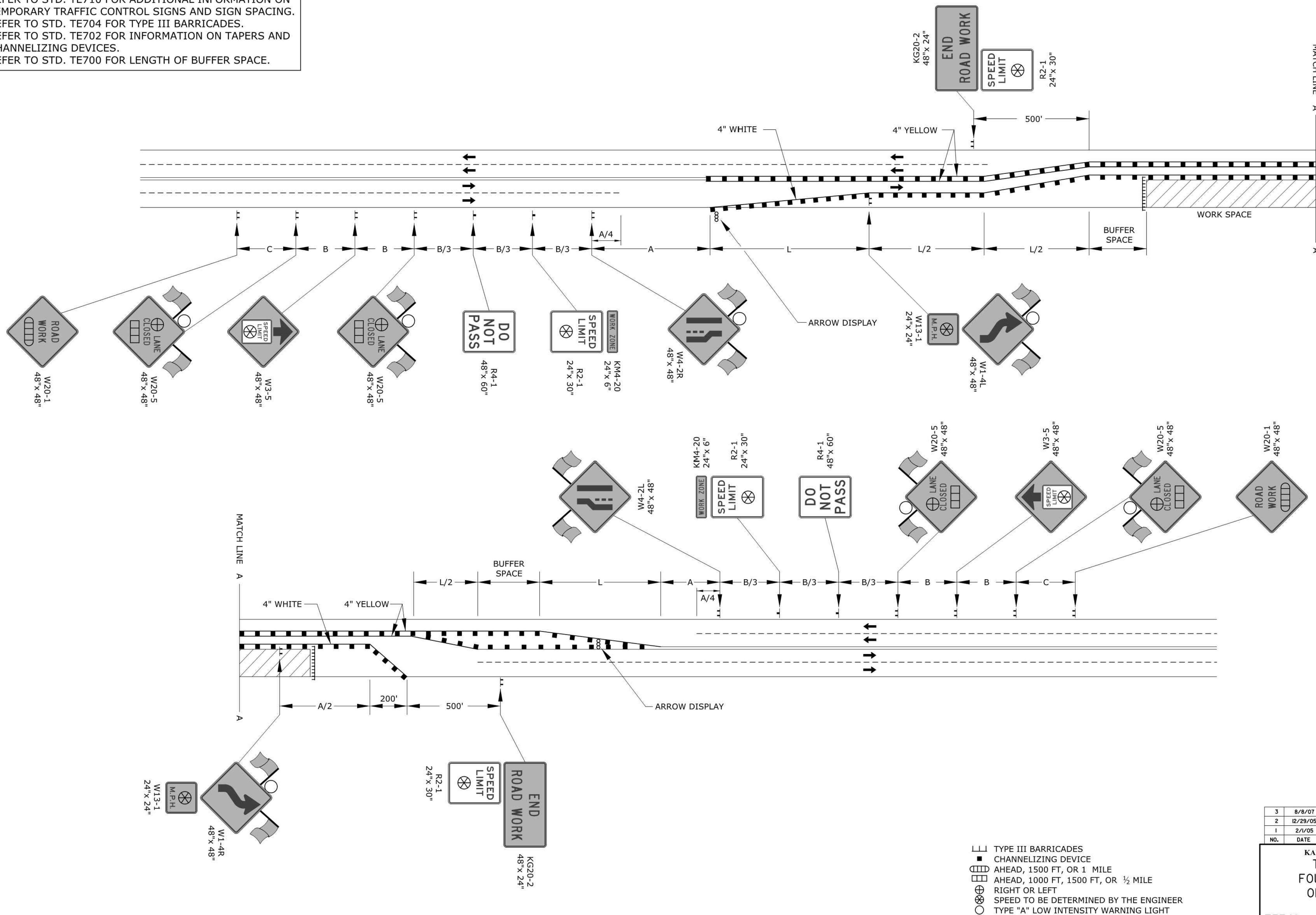


REFER TO STD. TE710 FOR ADDITIONAL INFORMATION ON TEMPORARY TRAFFIC CONTROL SIGNS AND SIGN SPACING. REFER TO STD. TE704 FOR TYPE III BARRICADES. REFER TO STD. TE702 FOR INFORMATION ON TAPERS AND CHANNELIZING DEVICES. REFER TO STD. TE700 FOR LENGTH OF BUFFER SPACE.



- ▬ TYPE III BARRICADES
- ▬ CHANNELIZING DEVICE
- ▬ AHEAD, 1500 FT, OR 1 MILE
- ▬ AHEAD, 1000 FT, 1500 FT, OR 1/2 MILE
- ⊕ RIGHT OR LEFT
- ⊗ SPEED TO BE DETERMINED BY THE ENGINEER
- TYPE "A" LOW INTENSITY WARNING LIGHT

NO.	DATE	REVISIONS	BY	APP'D
3	8/8/07	Sign Spacing Change	M.B.	A.A.A.
2	12/29/05	M-20 Changed to KM4-20	M.B.	A.A.A.
1	2/1/05	Clarified Notes, Updated Warning Signs	B.H.	A.A.A.

KANSAS DEPARTMENT OF TRANSPORTATION
TYPICAL TRAFFIC CONTROL
FOUR-LANE UNDIVIDED HIGHWAY
ONE-HALF ROADWAY CLOSED

TE748 9/1/00

DESIGNED	B.A.H./D.E.T.A.L.E.D.	B.A.H.	QUANTITIES	TRACED
DESIGN CK.			QUAN. CK.	TRACE CK.

No.	Date	By	Approved	Revision
CENTRAL AVENUE ROCK ROAD TO WEBB ROAD KDOT STANDARD - TE748 CITY OF WICHITA, KANSAS JAMES L. ARMOUR, P.E. - CITY ENGINEER				
POE & ASSOCIATES, INC. CONSULTING ENGINEERS 5940 E. Central, Suite 200 • Wichita, KS 67208-0242 Phone 316/605-4114 • FAX 316/605-4444				
Engineer:	P. FERGUSON			
Designer:	P. FERGUSON/M. TUCKER			
Post Job No.:	1972			
Date:	MARCH 2011			
SHEET NO. 57 OF 69				