

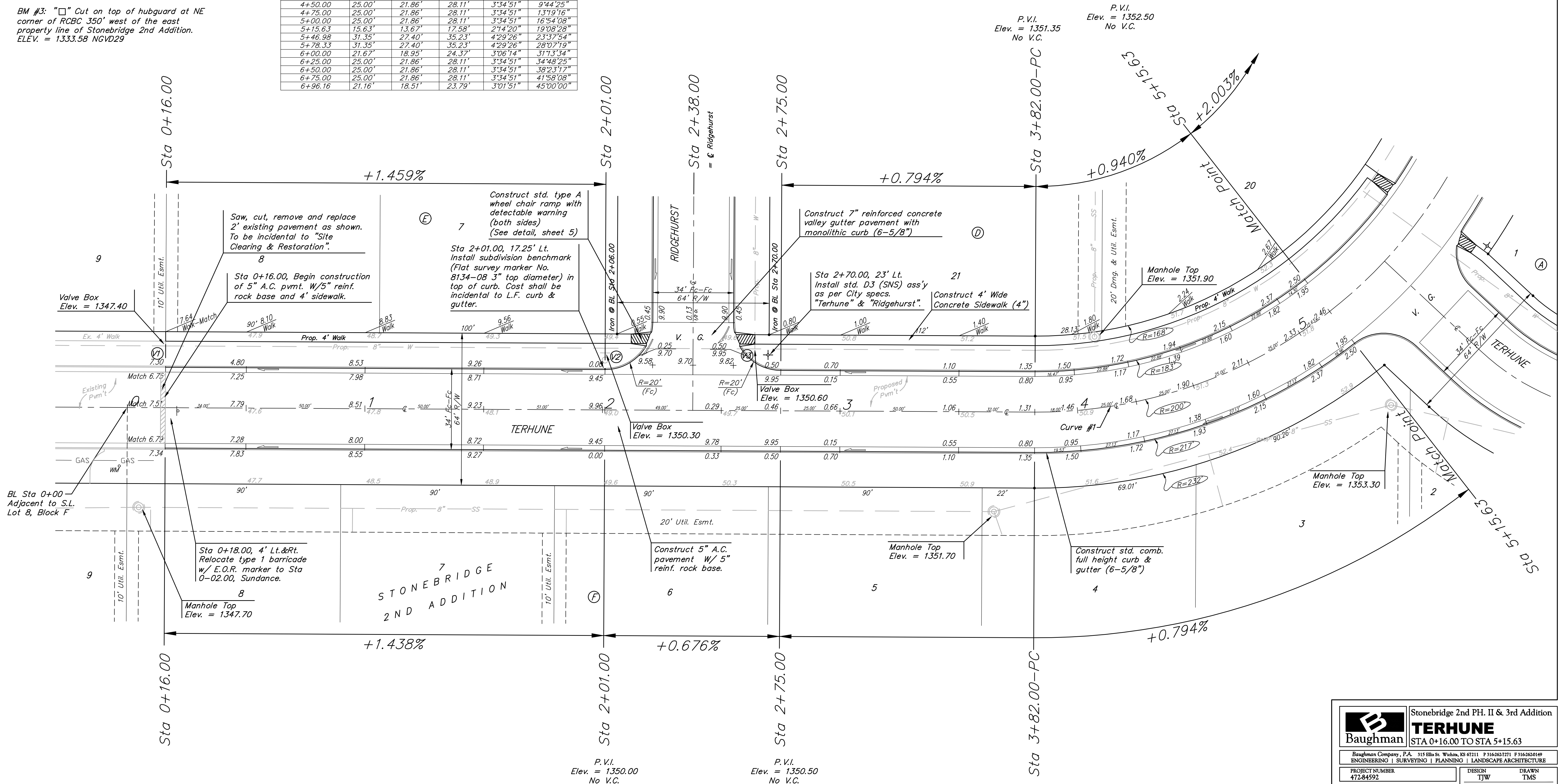
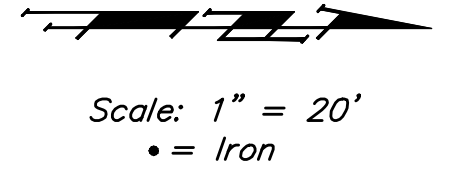
BENCHMARKS:
 BM #1: "□" Cut on top of curb, east side of Ridgehurst, adjacent to common front lot corner of Lots 6 & 7, Block E, Stonebridge 2nd Addition.
 ELEV. = 1348.51 NGVD29

BM #2: "□" Cut on top of curb, south side of Sundance, near end of pavement in front of Lot 6, Block 3, Savannah at Castle Rock Ranch 7th Addition.
 ELEV. = 1347.33 NGVD29

BM #3: "□" Cut on top of hubguard at NE corner of RCBC 350' west of the east property line of Stonebridge 2nd Addition.
 ELEV. = 1333.58 NGVD29

Curve #1
 Curve Data Based on Centerline
 Rad. = 200' Delta = 90°00'00" Tangent = 200.00'
 Arc = 314.16' L.C. = 282.84' Def/Fl. = 8.59435 Min.

Station	Arc	FACE CHORD LENGTHS		Defl.	T. Defl.
		8 Lt.	8 Rt.		
3+82.00	-	-	-	0°00'00"	0°00'00"
4+00.00	18.00'	15.74'	20.24'	2°34'42"	2°34'42"
4+25.00	25.00'	21.86'	28.11'	3°34'51"	6°09'33"
4+50.00	25.00'	21.86'	28.11'	3°34'51"	9°44'25"
4+75.00	25.00'	21.86'	28.11'	3°34'51"	13°19'16"
5+00.00	25.00'	21.86'	28.11'	3°34'51"	16°54'08"
5+15.63	15.63'	13.67'	17.58'	2°14'20"	19°08'28"
5+46.98	31.35'	27.40'	35.23'	4°29'26"	23°37'54"
5+78.33	31.35'	27.40'	35.23'	4°29'26"	28°07'19"
6+00.00	21.67'	18.95'	24.37'	3°06'14"	31°13'34"
6+25.00	25.00'	21.86'	28.11'	3°34'51"	34°48'25"
6+50.00	25.00'	21.86'	28.11'	3°34'51"	38°23'17"
6+75.00	25.00'	21.86'	28.11'	3°34'51"	41°58'08"
6+96.16	21.16'	18.91'	23.79'	3°01'51"	45°00'00"



P.V.I. Elev. = 1350.00 No V.C.
 P.V.I. Elev. = 1350.50 No V.C.

	Stonebridge 2nd PH. II & 3rd Addition TERHUNE STA 0+16.00 TO STA 5+15.63	
	Baughman Company, P.A. 515 Ella St. Wichita, KS 67211 P 316-263-7771 F 316-263-0416 ENGINEERING SURVEYING PLANNING LANDSCAPE ARCHITECTURE	
PROJECT NUMBER 47284592	DESIGN TJW	DRAWN TMS
REVISIONS:	APPROVED NBW	DATE 07/11
SCALE Noted		SHEET 6 OF 28
06-14 Str1.dwg		06-08-E635