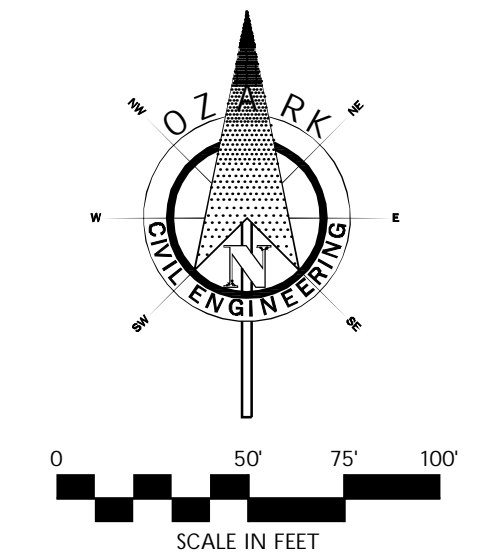
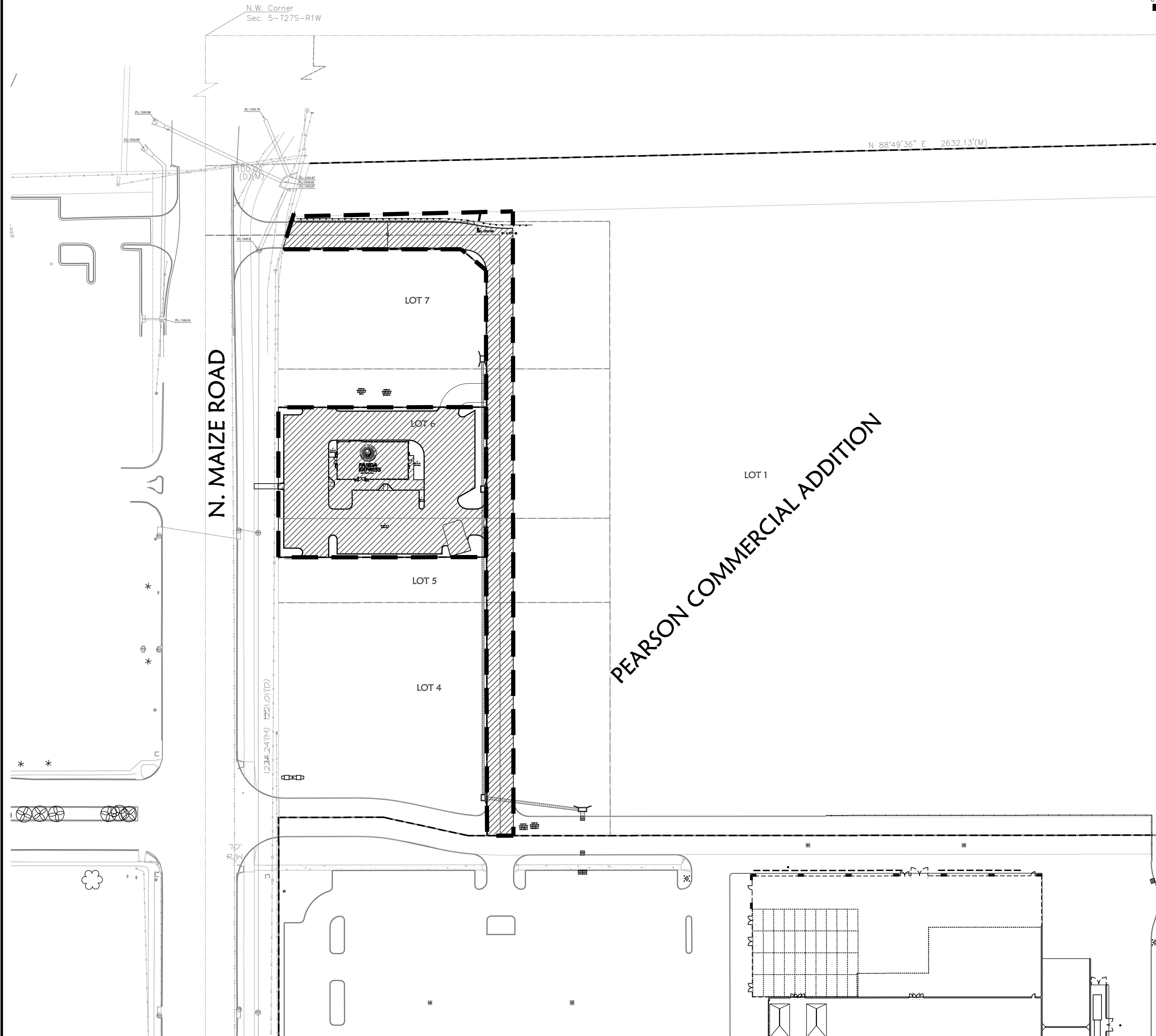


q:\10-0992_nw_wichita_panda_express\dwg\project\13_city_revisions\date 020311\10-0992_2r6.dwg - Plotted on 3/4/2011 12:03:00 PM @ a scale of 1:1 to pdf-xchange 4.0 (24x36).pc3 by Scott Wages



LEGAL DESCRIPTION

PORTIONS OF LOTS 5 AND 6, BLOCK 1 PEARSON COMMERCIAL ADDITION TO WICHITA, SEDGWICK COUNTY, KANSAS
2760 N. MAIZE ROAD

SITE INFORMATION:

| PEARSON COMMERCIAL ADDITION | AREA | PERCENTAGE |
|--------------------------------------|------------------------------|----------------|
| LOT 1, 4, 5, 6, 7, BLOCK 1 | 510,713 SF (11.72 AC) | 94.76% |
| OWNERSHIP: EASTSIDE DEVELOPMENT, LLC | 28,215 SF (0.6477 AC) | 5.24% |
| CFT DEVELOPMENTS, LLC | | |
| TOTAL | 538,928 SF (12.37 AC) | 100.00% |

PROJECT INFORMATION:

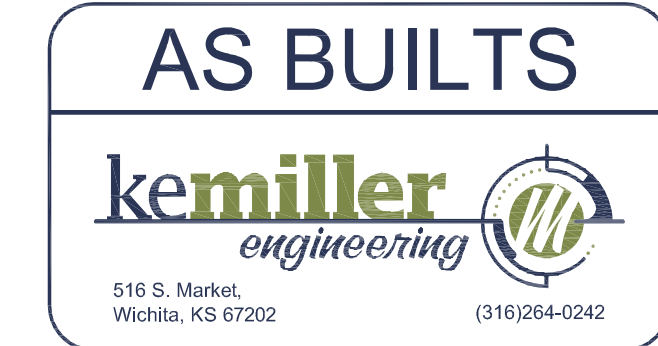
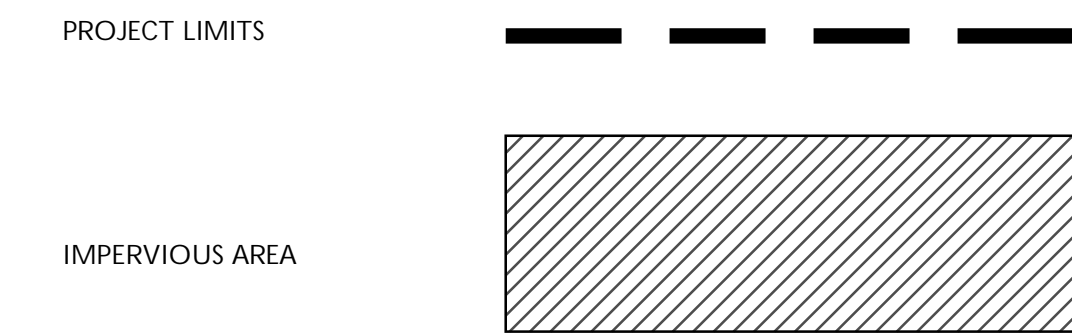
PANDA EXPRESS (CFT DEVELOPMENTS, LLC):

| | | |
|-----------------|----------------------|--------------------------|
| PROJECT LIMITS: | 28,215 SF (0.648 AC) | 100.00% |
| IMPERVIOUS AREA | 24,134 SF (0.554 AC) | 85.54% OF PROJECT LIMITS |
| PERVIOUS AREA | 4,081 SF (0.094 AC) | 14.46% OF PROJECT LIMITS |

PRIVATE DRIVE (EASTSIDE DEVELOPMENT, LLC):

| | | |
|-----------------|----------------------|--------------------------|
| PROJECT LIMITS: | 21,573 SF (0.495 AC) | 100.00% |
| IMPERVIOUS AREA | 19,482 SF (0.447 AC) | 90.31% OF PROJECT LIMITS |
| PERVIOUS AREA | 2,091 SF (0.048 AC) | 9.69% OF PROJECT LIMITS |

LEGEND



| DATE | DESCRIPTION | BY |
|----------|-------------------------|-----|
| 02/09/11 | REV. 2 - ADDED ERU PLAN | EDH |



ERU PLAN

A NEW RESTAURANT FOR:
PANDA EXPRESS

2760 N. MAIZE ROAD
WICHITA, KS

DRAWN BY: EDH
APPV. BY: SPM
DWG. NAME: 10-0993PRE
DATE: 10/25/10
JOB NO: 10-0993
SHEET NO:

ERU