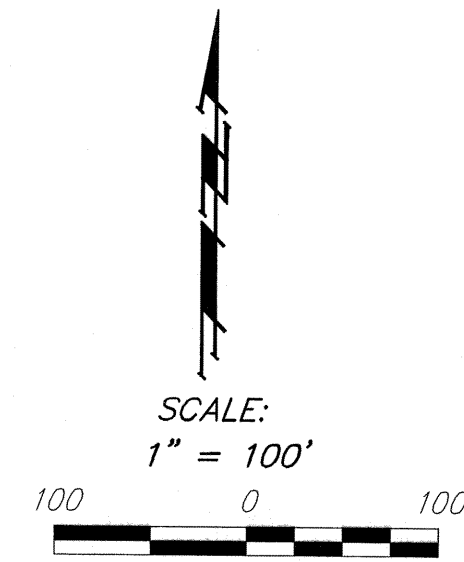


AS BUILT PLANS

Contractor: Mies
 Inspector: Don Eddingfield, Baughman Co
 pdf's by: KEK, 7/1/11

Release Date: 8/4/2011
 : APRosas 8/4/2011



SANITARY SEWER TO SERVE

Wichita Heights High School Addition

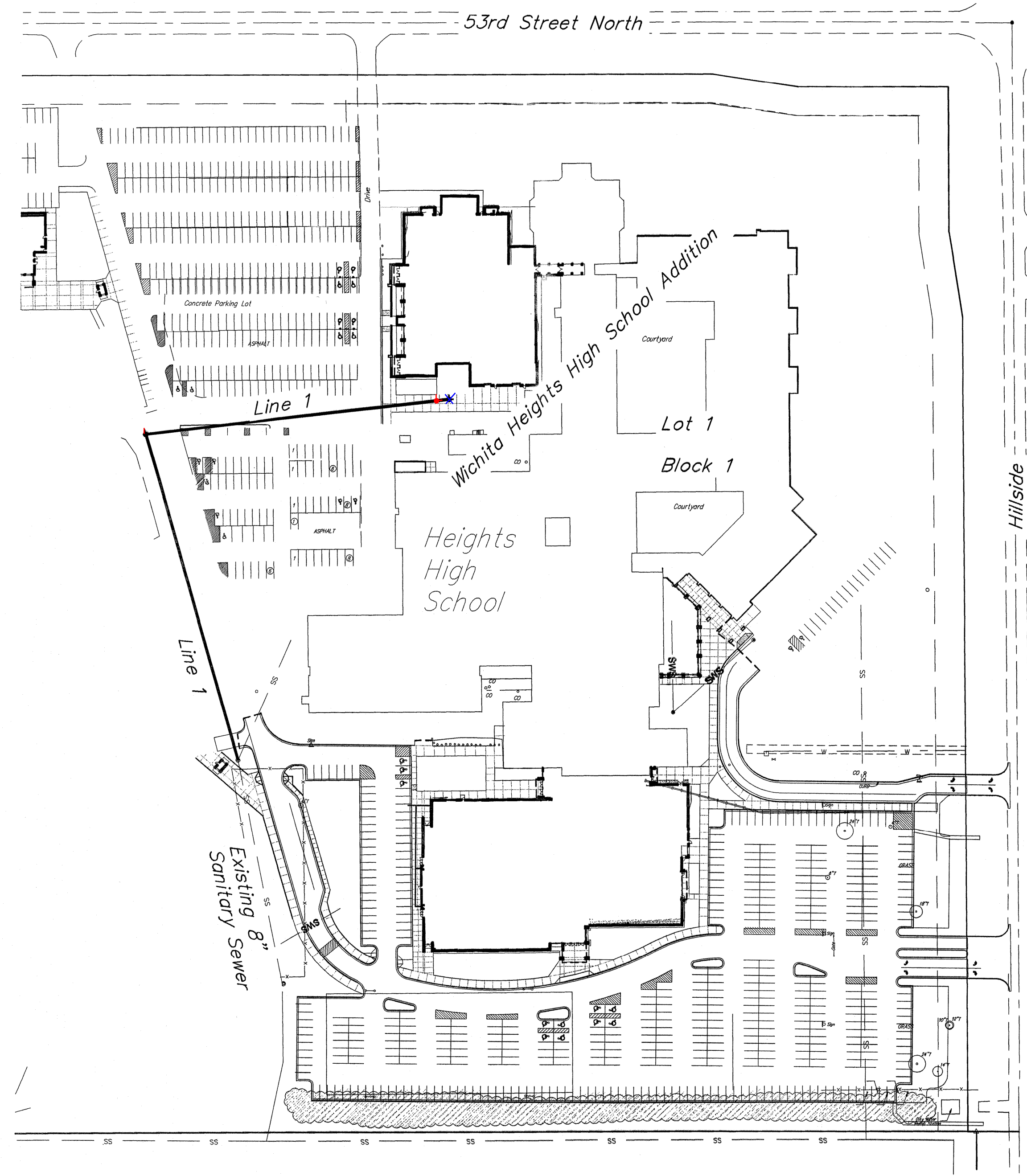
LOT 1, BLOCK 1

Private Project: 2055 PPS (607861)

CITY OF WICHITA, KANSAS

James Armour, P.E. City Engineer

August 2010



Benchmarks

1. "□" Square Cut On Headwall South Side Of 53rd Street North Approximately 736.3' West Of Center Line Of Hillside. Elev. = 1369.93 NAVD 88
2. "□" Square Cut On Headwall South Side Of 53rd Street North Approximately 1522.1' West Of Center Line Of Hillside. Elev. = 1369.94 NAVD 88

Index

Title Sheet	1
Coordinate Sheet	2
Plan/Profile Sheets	3-4
Riser Detail Sheet	5
Copy of Plat	6
Manhole, Frame & Cover Details	Available On Request
BMP Erosion Details	Available On Request

Legal Description

Lot 1, Block 1, Wichita Heights High School Addition, An Addition To Wichita, Sedgwick County, Kansas

General Notes

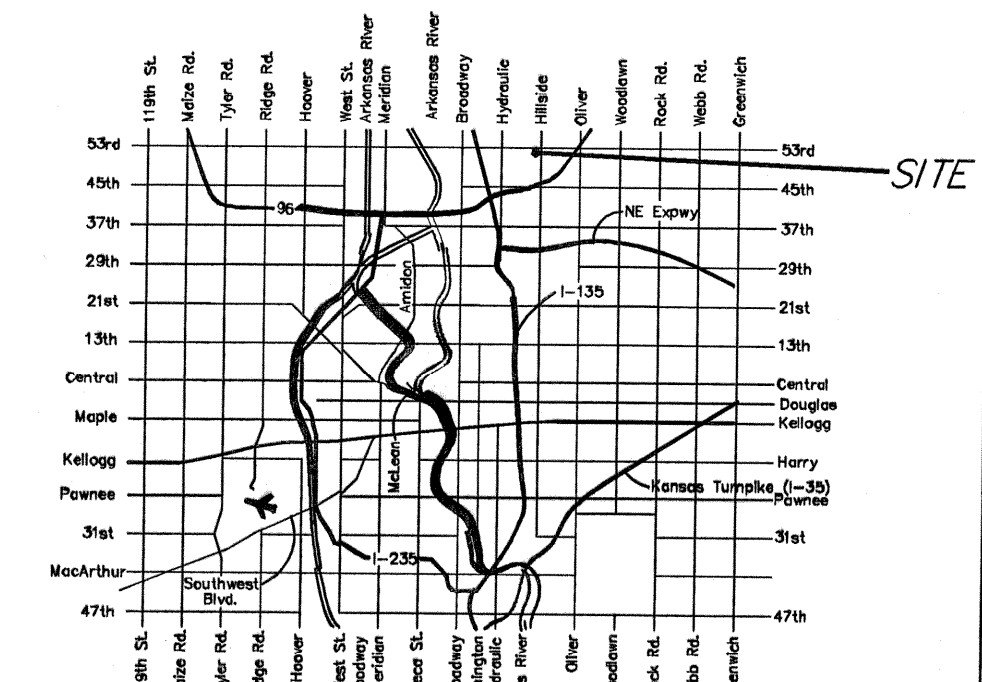
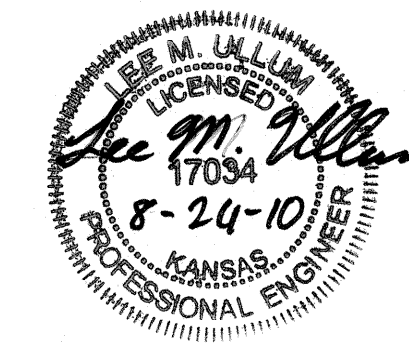
1. Contractor will be required to provide notice to utility companies a minimum of forty-eight (48) hours prior to any excavation, as follows:
 Kansas One-Call 687-2470
 The Contractor must notify the following in case of an emergency:
 Cox Communications 262-4270
 Kansas Gas Service Company 1-888-492-4950
 Westar Energy (Electric) 383-8650
 Black Hills Energy (Gas) 1-800-303-0357
 Southwestern Bell Telephone Co. 1-800-286-8313
 City of Wichita Water Dept. (Water) 262-6000
 City of Wichita Sewer Maint. (SS) 262-6000
 City of Wichita Storm Sewer Maint. 268-4090
 City of Wichita Traffic Maint. 268-4034
2. All disturbed R/W areas not intended for pavement or sidewalk construction shall be seeded with Kansas Premium Fescue Blend at a rate of 8 lb./1000 Sq. Ft., fertilized with a 16-20-6 ratio at a rate of 4 lb./1000 Sq. Ft., and mulched with Prairie Hay at a rate of 92 lb./1000 Sq. Ft. Mulch shall be "patted" with forks or punched into soil to reduce loss due to wind.
3. Utility service lines, poles, valve boxes, meters, et cetera are to be adjusted as necessary by others prior to construction unless the plans specifically call for their adjustment by the Contractor or unless the plans specifically identify a utility to be adjusted by its owner during construction. Existing utilities and their location, as shown on the plans represent the best information obtainable for design and shall be field verified. The contractor will be required to work around existing utilities within the right-of-way which do not conflict with proposed construction.
4. All sewer lines and appurtenances shall be installed in accordance with the most recent edition of City of Wichita, Kansas Standard Specifications for the Construction of City Projects.
5. Contractor shall furnish the inspector with a copy of the manufacturer's certification for any pipe used on this project after completion of pipe installation. The engineer will not certify the project to the city until pipe certification has been received.
6. Properties within the project limits may have underground sprinkler systems which conflict with new construction. Contractor will be required to remove such improvements should they not be removed by their owner at the time of construction. The Contractor will be required to salvage all sprinkler heads and/or valves and give such material to their owner. Portions of underground sprinkler systems not in conflict with new construction shall be protected from damage and shall remain in place. All work in connection with underground sprinkler systems shall be considered as subsidiary to the contract pay items of work.
7. Contractor shall not start work on the project until the project inspector is assigned to the project and is present on the site. Contractor shall not start on the project until all necessary bonds and permits have been obtained. Bonds may include but are not limited to Statutory, Performance & Maintenance Any work done without inspection will be required to be uncovered for inspection.
8. Rubble from the removal of miscellaneous structures and excess excavation which is to be wasted shall be disposed of on sites to be provided by the Contractor. These sites shall be approved by the Engineer as to suitability, appearance and site location. Locations that, in the opinion of the Engineer, will leave an unsightly appearance will not be approved. All disposal sites must be approved by the Kansas Department of Health and Environment. Material either stockpiled or disposed of in a flood plain would require a Kansas State Board of Agriculture permit. Any material dumped in waters of the United States or wetlands is subject to U.S. Corps. of Engineers permitting regulations. Any material buried or stockpiled beyond approved construction limits would require additional archaeological investigations unless buried in a previously approved borrow location.

APPROVED AS NOTED
 BY CITY ENGINEER OF WICHITA

Sanitary Sewers *Julianne Kellerman 8-24-10*

NOTE TO CONTRACTORS

Installation, inspection and testing for this project is to be provided by a Licensed Consulting Engineering Firm under contract with the Owner/Developer. Said inspection to be in accordance with the City of Wichita standard construction engineering practices and certified by a Licensed Professional Engineer. No work shall be performed in dedicated easements or public right-of-way by the Contractor without such inspection nor shall any work be commenced without written authorization by the City Engineer. All Construction and Materials shall comply with the City of Wichita Specifications and Standards (on file and available in the City Engineer's Office).

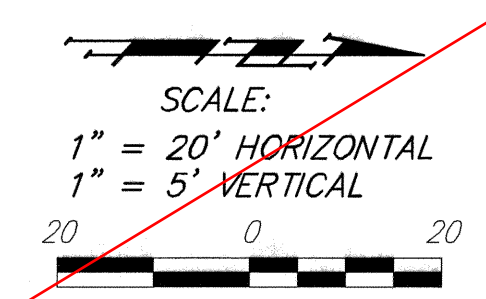


NO SCALE:

VICINITY MAP



Baughman Company, P.A. 315 Ellis St. Wichita, KS 67211 P 316-262-7271 F 316-262-0145
 ENGINEERING | SURVEYING | PLANNING | LANDSCAPE ARCHITECTURE



Sta. 0+00.0, Begin Line 1. Core Existing Manhole. Extend 8" Sanitary Sewer Northwest. Reconstruct Invert For Smooth Flow. N- 4117.61 E-1102.49

Coordinate With General Contractor For Removal Of Existing Pavement For Sanitary Sewer Construction.

Remove & Replace Concrete Flume As Necessary For Sanitary Sewer Construction. Sand Backfill, Flush & Vibrate Per Wichita Specs.

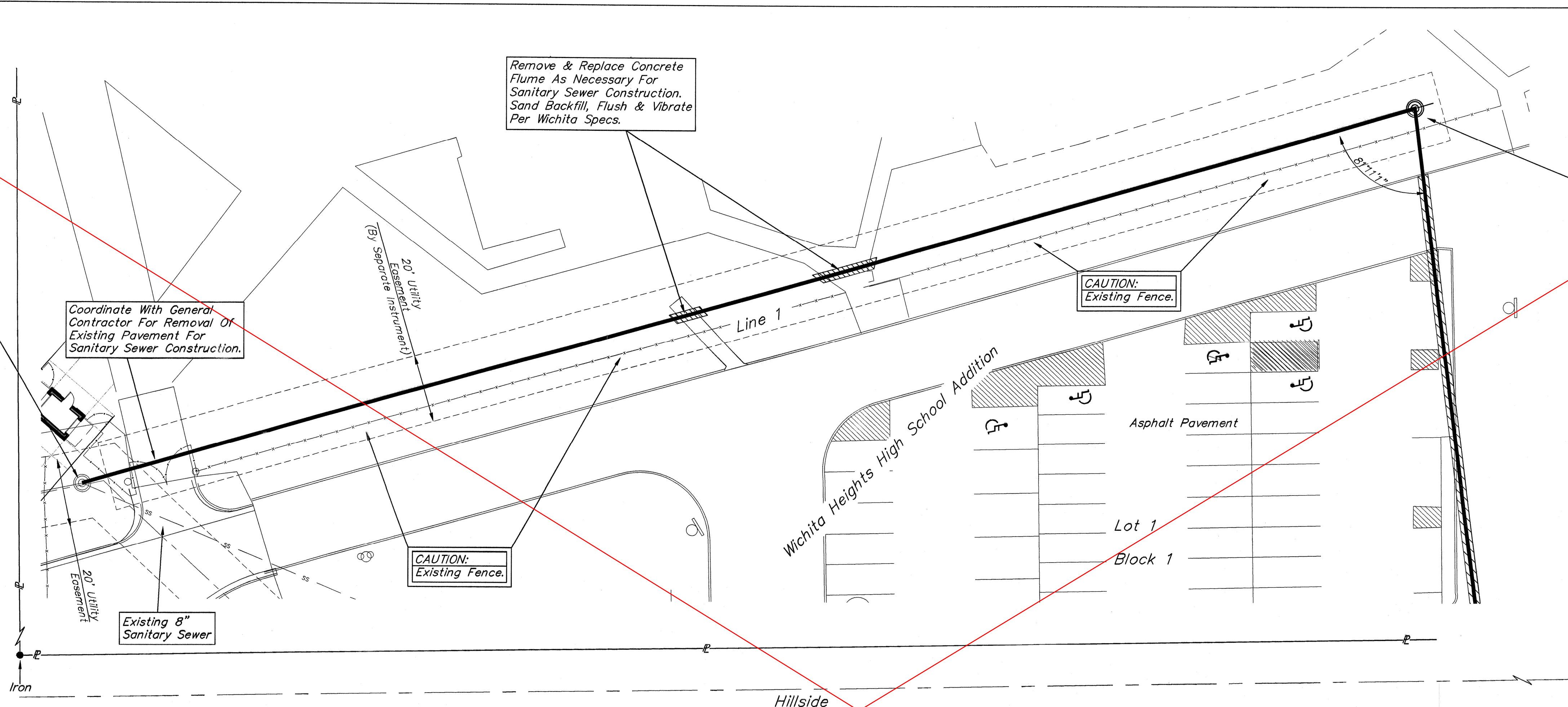
CAUTION: Existing Fence.

Sta. 4+00.0, Line 1. Construct 1-4' Dia. Manhole. Top = 1366.20 4" Stub w/Riser (NW) Match Point. N- 4502.15 E- 992.35

All Sanitary Sewer Excavation Shall Be Sand Backfilled, Flushed & Vibrated To Wichita Specifications.

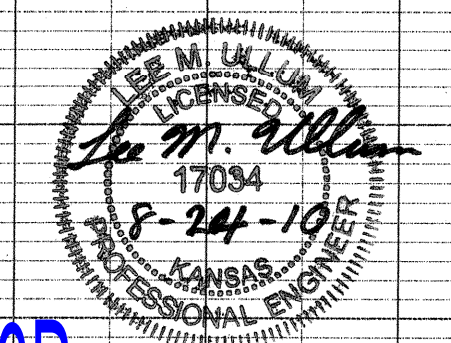
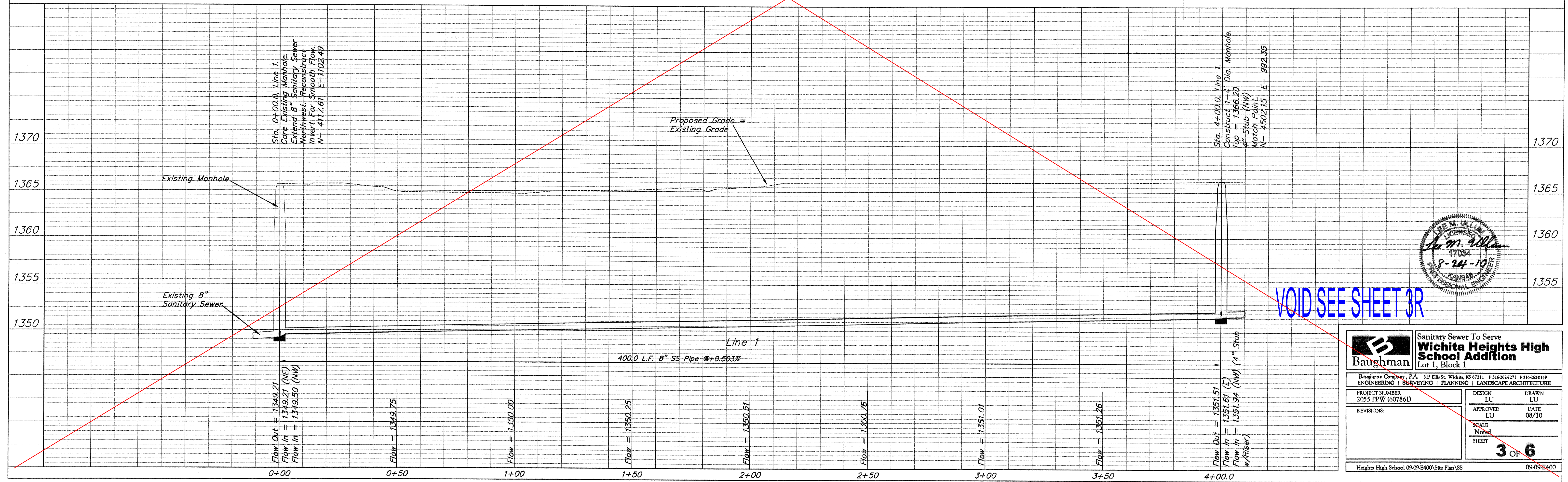
Contractor Shall Follow All Applicable Best Management Practices (BMP) For Erosion Control.

Contractor To Use Extreme Caution When Excavating Near Utility Lines. Contractor To Hand Dig To Expose All Utility Lines Prior To Construction. Verify Depth To Determine Conflict If Any.



BENCHMARKS

1. "□" Square Cut On Headwall South Side Of 53rd Street North Approximately 736.3' West Of Center Line Of Hillside. Elev. = 1369.93 NAVD 88
2. "□" Square Cut On Headwall South Side Of 53rd Street North Approximately 1522.1' West Of Center Line Of Hillside. Elev. = 1369.94 NAVD 88



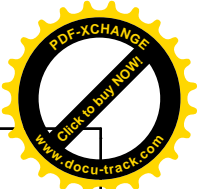
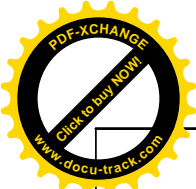
VOID SEE SHEET 3R

Baughman Sanitary Sewer To Serve **Wichita Heights High School Addition**
 Lot 1, Block 1

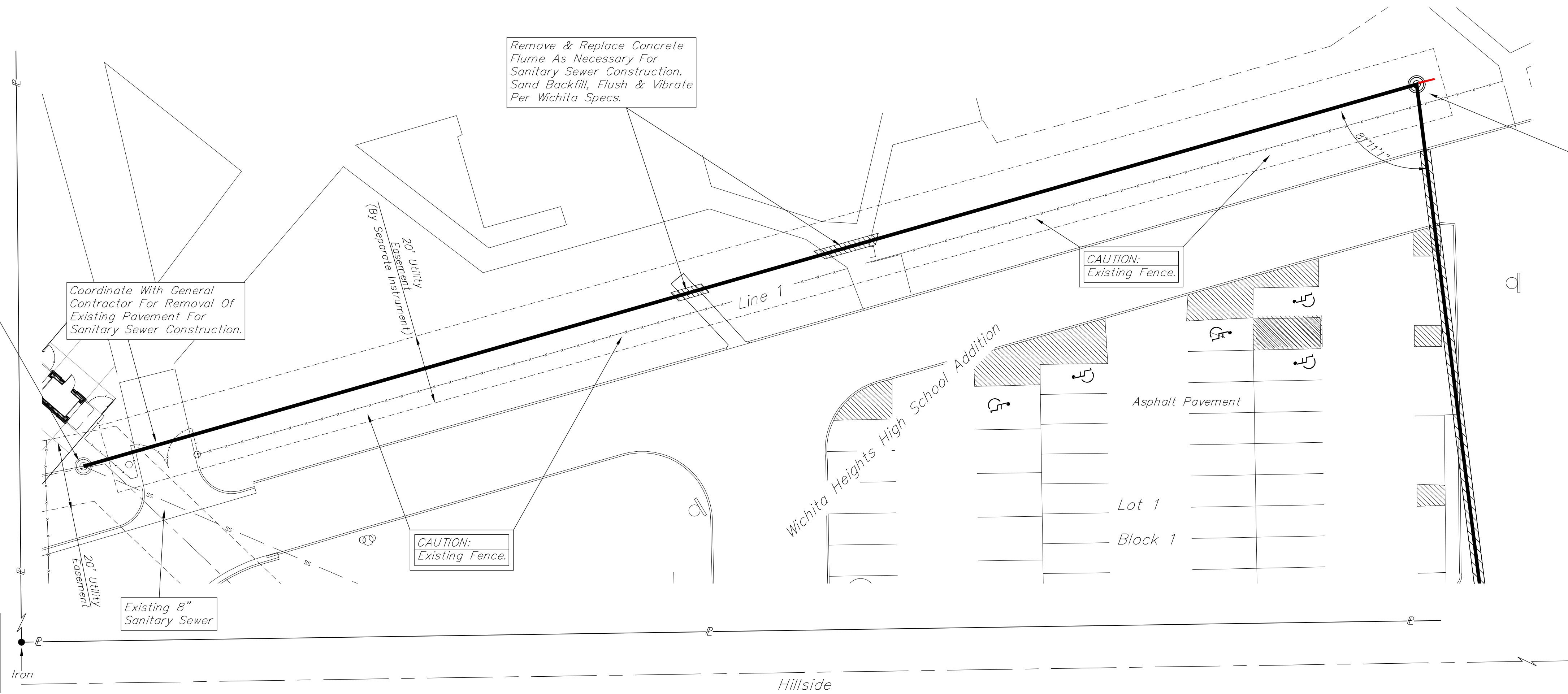
Baughman Company, P.A. 315 Ellis St. Wichita, KS 67211 P 316-262-2721 F 316-262-0149
 ENGINEERING | SURVEYING | PLANNING | LANDSCAPE ARCHITECTURE

PROJECT NUMBER 2055 PPW (607861)	DESIGN LU	DRAWN LU
REVISIONS:	APPROVED LU	DATE 08/10
	SCALE Noted	SHEET 3 OF 6

Heights High School 09-09-B400/Site Plan US 09-09-B400



SCALE:
 1" = 20' HORIZONTAL
 1" = 5' VERTICAL



Sta. 0+00.0, Begin Line 1.
 Core Existing Manhole.
 Extend 8" Sanitary Sewer
 Northwest. Reconstruct
 Invert For Smooth Flow.
 N- 4117.61 E-1102.49

Coordinate With General
 Contractor For Removal Of
 Existing Pavement For
 Sanitary Sewer Construction.

Remove & Replace Concrete
 Flume As Necessary For
 Sanitary Sewer Construction.
 Sand Backfill, Flush & Vibrate
 Per Wichita Specs.

CAUTION:
 Existing Fence.

Sta. 4+00.0, Line 1.
 Construct 1-4' Dia. Manhole.
 Top = 1366.20
 6" Stub w/Riser (NW)
 Match Point.
 N- 4502.15 E- 992.35

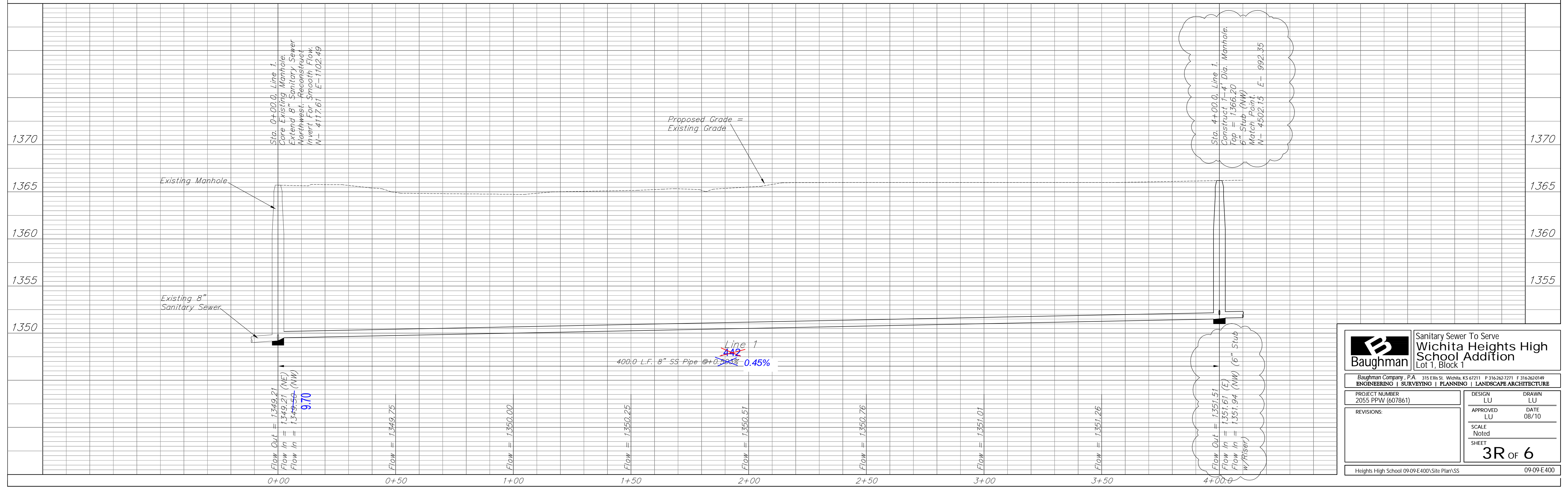
All Sanitary Sewer Excavation Shall
 Be Sand Backfilled, Flushed &
 Vibrated To Wichita Specifications.

Contractor Shall Follow All Applicable
 Best Management Practices (BMP)
 For Erosion Control.

Contractor To Use Extreme Caution
 When Excavating Near Utility Lines.
 Contractor To Hand Dig To Expose All
 Utility Lines Prior To Construction.
 Verify Depth To Determine Conflict If Any.

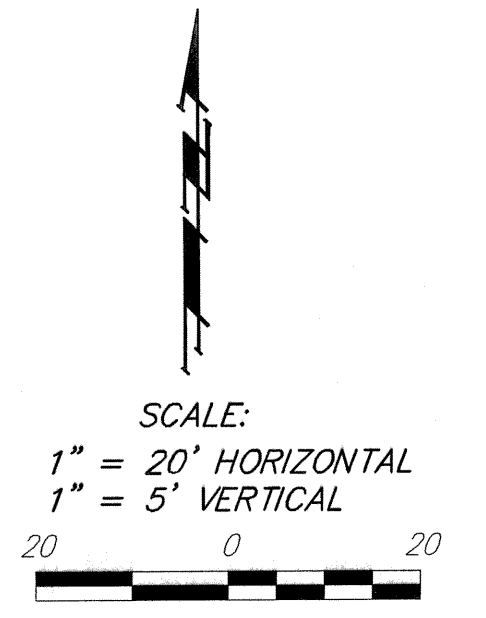
BENCHMARKS

1. "□" Square Cut On Headwall South Side Of 53rd Street
 North Approximately 736.3' West Of Center Line Of Hillside.
 Elev. = 1369.93 NAVD 88
2. "□" Square Cut On Headwall South Side Of 53rd Street
 North Approximately 1522.1' West Of Center Line Of Hillside.
 Elev. = 1369.94 NAVD 88



		Sanitary Sewer To Serve Wichita Heights High School Addition Lot 1, Block 1	
Baughman Company, P.A. 315 Ellis St. Wichita, KS 67211 P 316-262-7271 F 316-262-0149 ENGINEERING SURVEYING PLANNING LANDSCAPE ARCHITECTURE			
PROJECT NUMBER 2055 PPW (607861)		DESIGN LU	DRAWN LU
REVISIONS:		APPROVED LU	DATE 08/10
		SCALE Noted	SHEET 3R OF 6
Heights High School 09-09-E400 Site Plan/SS		09-09-E400	

53rd Street North



Sta. 4+00.0, Line 1.
Match Point.
Extend 8" Sanitary
Sewer Easterly.
N- 4502.15 E- 992.35

Wichita Heights High School Addition
Lot 1
Block 1

Coordinate With General
Contractor For Removal Of
Existing Pavement For
Sanitary Sewer Construction.

CAUTION! VERIFY
Water Line Crossings.
Depths Unknown.

CAUTION! VERIFY
Electric Line Crossings.
Depths Unknown.

CAUTION! VERIFY
Gas Line Crossing.
Depth Unknown.

+41.1
Sta. 7+56.6, End Line 1.
Construct 1-4' Dia. Manhole.
Top = 1369.80
4" Stubs w/Risers (N) (E)
N- 4546.64 E- 1346.19

All Sanitary Sewer Excavation Shall
Be Sand Backfilled, Flushed &
Vibrated To Wichita Specifications.

Contractor Shall Follow All Applicable
Best Management Practices (BMP)
For Erosion Control.

Contractor To Use Extreme Caution
When Excavating Near Utility Lines.
Contractor To Hand Dig To Expose All
Utility Lines Prior To Construction.
Verify Depth To Determine Conflict If Any.

Remove & Replace Fence
As Necessary For Sanitary
Sewer Construction.

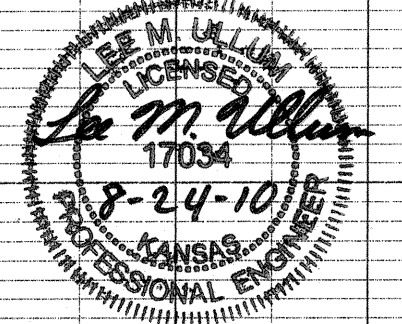
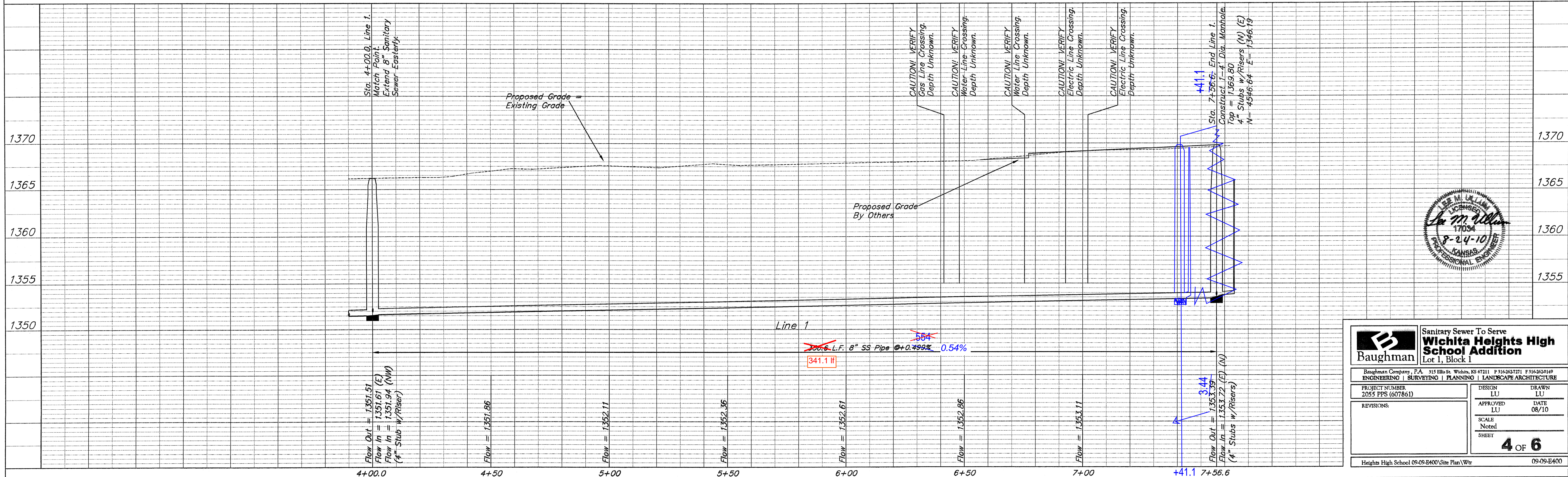
This Portion Of Sanitary
Sewer Lying Outside Public
Easement To Be Privately
Owned & Maintained.

10' Waterline Easement
(Per Film 744, Page 1235)

10' KGE Easement
(Per Book Misc. 608,
Page 2)

BENCHMARKS

1. "□" Square Cut On Headwall South Side Of 53rd Street
North Approximately 736.3' West Of Center Line Of Hillside.
Elev. = 1369.93 NAVD 88
2. "□" Square Cut On Headwall South Side Of 53rd Street
North Approximately 1522.1' West Of Center Line Of Hillside.
Elev. = 1369.94 NAVD 88



Baughman		Sanitary Sewer To Serve Wichita Heights High School Addition Lot 1, Block 1	
Baughman Company, P.A. 315 Ellis St. Wichita, KS 67211 P 316-262-7271 F 316-262-0149			
ENGINEERING SURVEYING PLANNING LANDSCAPE ARCHITECTURE			
PROJECT NUMBER 2055 PPS (607861)	DESIGN LU	DRAWN LU	DATE 08/10
REVISIONS:	APPROVED LU	SCALE Noted	SHEET
			4 OF 6
Heights High School 09-09-E400\Site Plan\Wtr			09-09-E400