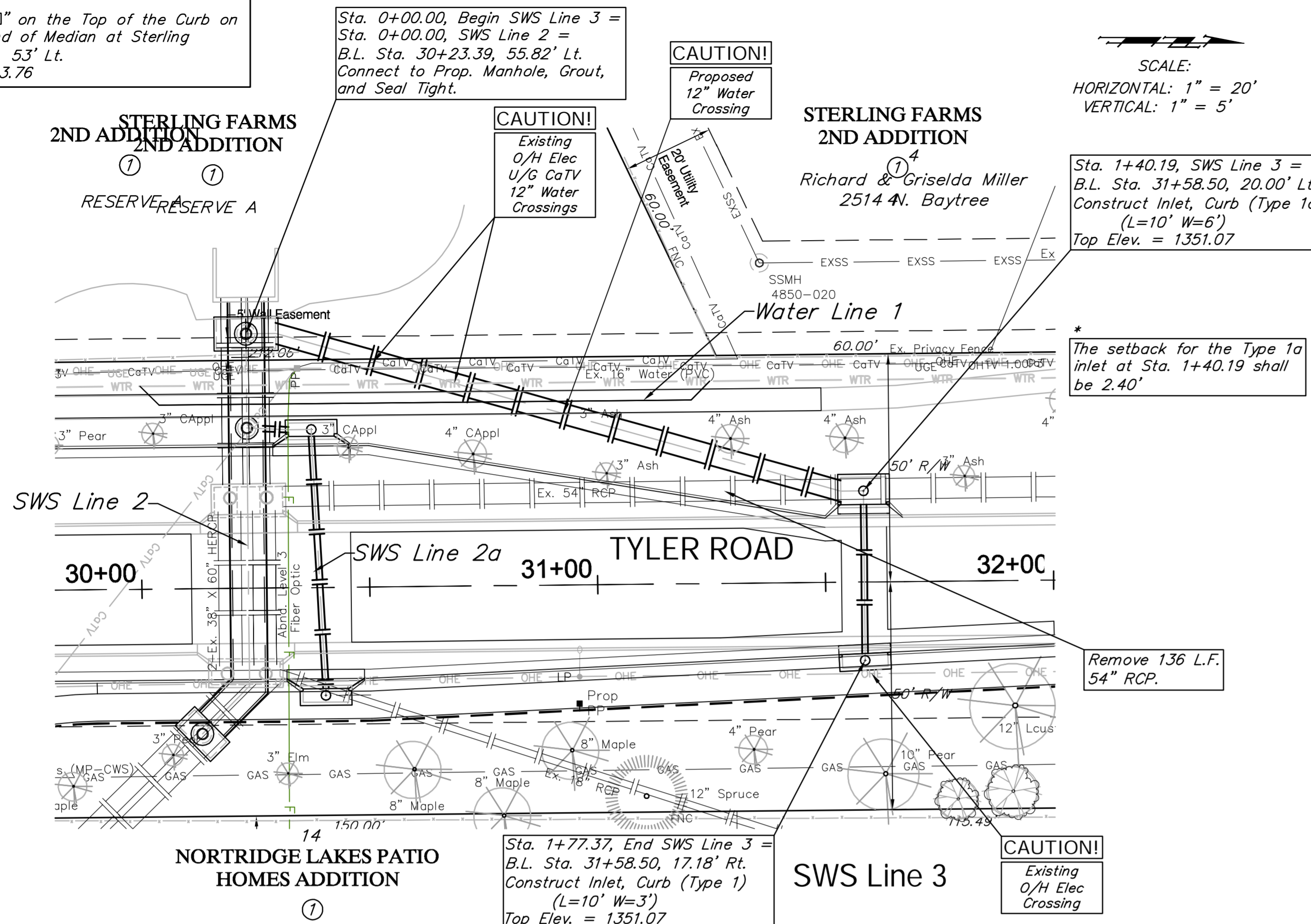


BENCHMARK:
 BM #4 - Chiseled "□" on the Top of the Curb on the East End of Median at Sterling
 Sta. 28+74, 53' Lt.
 Elev. = 1353.76



BENCHMARK:
 BM #5 - Chiseled "□" on the Top of the Curb on the West End of the Median at Northridge.
 Sta. 39+07, 52' Rt.
 Elev. = 1355.01

