

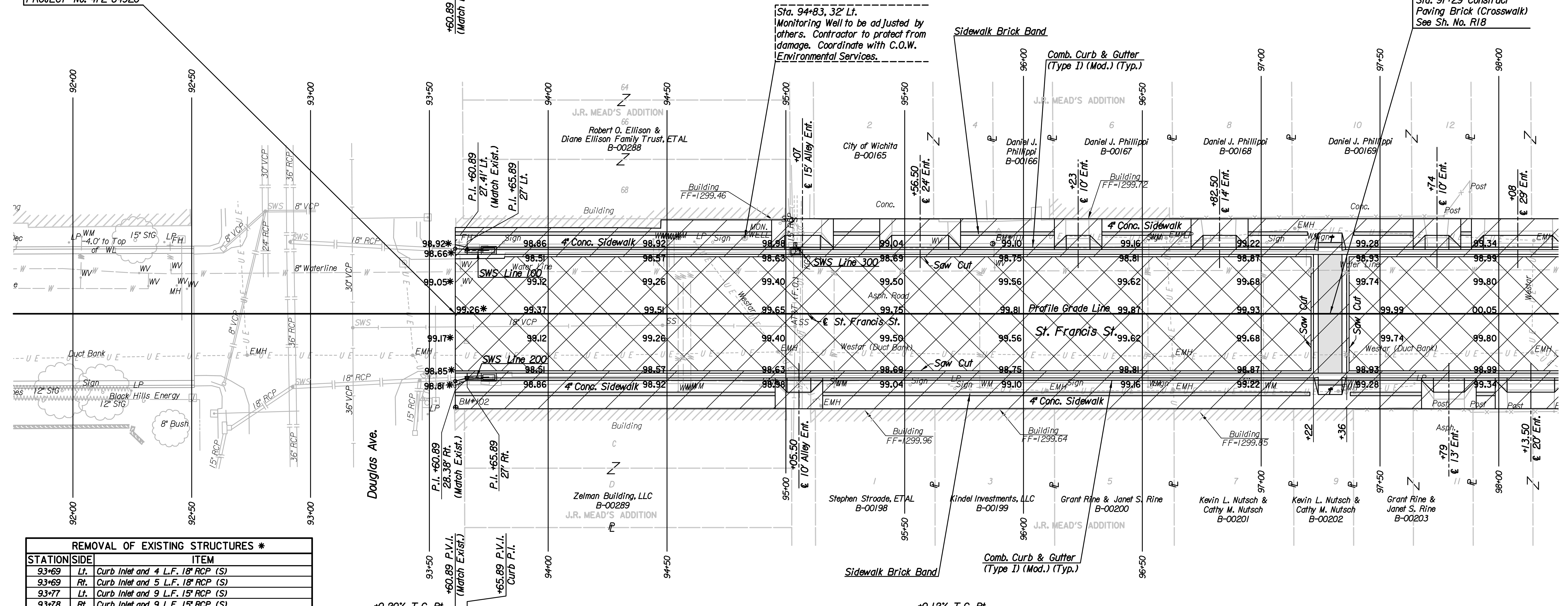
P.I. @ Sta. 93+00.00
1. No Monument Set

T.C. P.V.I. 1298.92
T.C. P.V.I. 1298.82
No V.C.

P.G. P.V.I. 1299.26
+0.28% P.G.
P.G. P.V.I. 1299.72
No V.C.
+0.12% P.G.

Sta. 93+60.89 BEGIN
PROJECT No. 472-84920

Sta. 97+29 Construct
Paving Brick (Crosswalk)
See Sh. No. R18

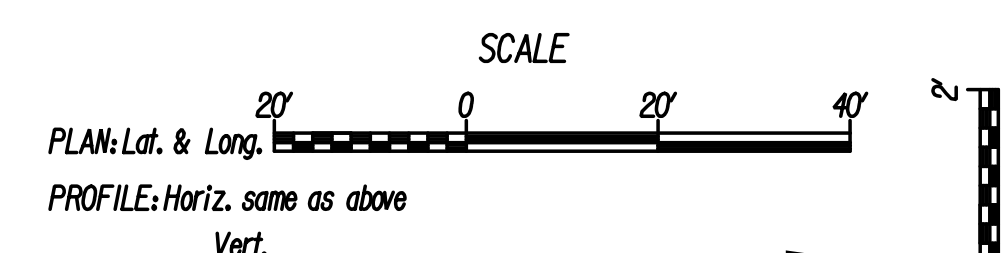


REMOVAL OF EXISTING STRUCTURES *		
STATION	SIDE	ITEM
93+69	Lt.	Curb Inlet and 4 L.F. 18" RCP (S)
93+69	Rt.	Curb Inlet and 5 L.F. 18" RCP (S)
93+77	Lt.	Curb Inlet and 9 L.F. 15" RCP (S)
93+78	Rt.	Curb Inlet and 9 L.F. 15" RCP (S)
93+81	Lt.	Sign
94+61	Lt.	Light Pole
94+69	Lt.	Sign
94+89	Rt.	Sign
95+04	Lt.	Curb Inlet and 3 L.F. 15" RCP (W)
95+18	Rt.	Sign
95+52	Rt.	Sign
95+69	Rt.	Light Pole
95+71	Rt.	Sign
96+18	Rt.	Sign
96+51	Lt.	Sign
96+54	Rt.	Sign
96+66	Lt.	Light Pole
96+92	Rt.	Sign
97+02	Lt.	Sign
97+21	Lt.	Sign
97+64	Rt.	Light Pole

* For Information Only

+0.20% T.C. Rt.
T.C. P.V.I. 1298.81
T.C. P.V.I. 1298.82
No V.C.

See Sh. No. R33 for table of Adjustments of existing Manholes, Water Valve Boxes, Water Meter Boxes, and Fire Hydrants.



BM *102 Chiseled "M" at NE Corner of Douglas and St. Francis intersection, at the building corner. 39' Rt. @ Sta. 93+61 Elev. = 1299.21

- Utilities
- Gas Kansas Gas Service
 - Gas Black Hills Energy
 - Power Westar Energy
 - Sanitary Sewer Wichita Water and Sanitary Sewer
 - Telephone AT&T
 - Water Wichita Water and Sanitary Sewer

LEGEND

- Pavement Removal
- Mill/Overlay
- Brick Pavers
- Wheelchair Ramp
- Match Existing

BM *101 Chiseled "M" on concrete base of fire hydrant, West side of St. Francis, 1/2 block North of Douglas. 30' Lt. @ Sta. 95+87 Elev. = 1299.23

NOTE: Proposed top of curb elevations shown are computed based on full height curb. Adjust elevations for 1/2" lip curb locations.

ST. FRANCIS STREET		By	Date
PLAN			
STA. 92+00 TO STA. 98+00			
JAMES L. ARMOUR, P.E. - CITY ENGINEER CITY OF WICHITA PROJECT NO. 472-84920			
Professional Engineering Consultants, P.A. 303 S. TOPEKA - WICHITA, KANSAS 67202 316-262-2691 • FAX 316-262-3003			
Designed by	JPS	Job No.	10310
Drawn by	SVB	Date	July, 2011
			Sh. R5 of 101

Plotted By: svb Date: 7/15/2011 7:41:54 AM
 FILE: I:\2010\10310\Plan\10310-Plan St Francis 92.dgn