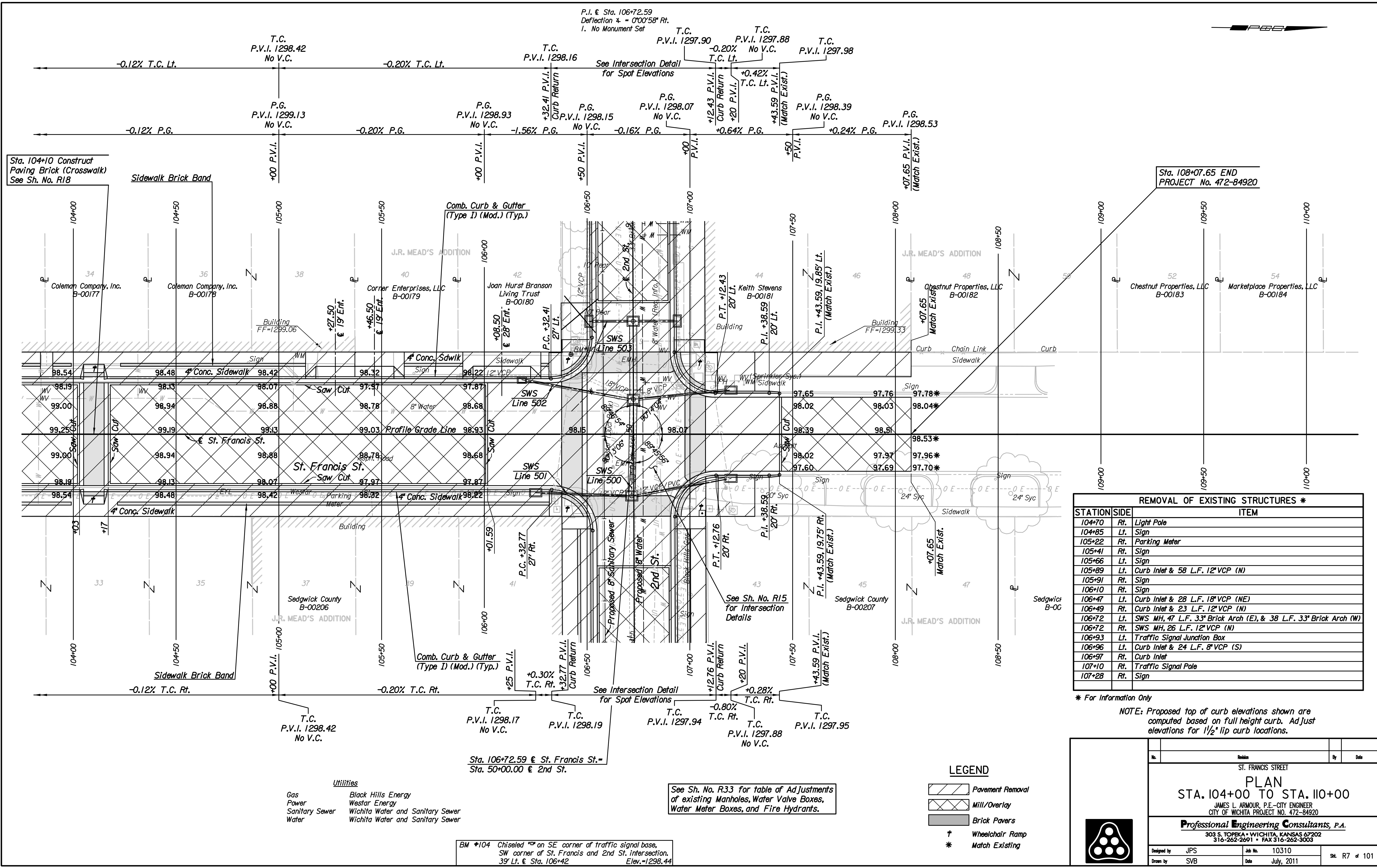


Plotted By: svb Date: 7/15/2011 7:44:44 AM
 FILE: I:\2010\10310\Plan\10310-Plan St Francis 104.dgn



P.I. & Sta. 106+72.59
 Deflection $\Delta = 0'00'58''$ Rt.
 I. No Monument Set



Sta. 104+10 Construct
 Paving Brick (Crosswalk)
 See Sh. No. R18

Sta. 108+07.65 END
 PROJECT No. 472-84920

REMOVAL OF EXISTING STRUCTURES *		
STATION	SIDE	ITEM
104+70	Rt.	Light Pole
104+85	Lt.	Sign
105+22	Rt.	Parking Meter
105+41	Rt.	Sign
105+66	Lt.	Sign
105+89	Lt.	Curb Inlet & 58 L.F. 12" VCP (N)
105+91	Rt.	Sign
106+10	Rt.	Sign
106+47	Lt.	Curb Inlet & 28 L.F. 18" VCP (NE)
106+49	Rt.	Curb Inlet & 23 L.F. 12" VCP (N)
106+72	Lt.	SWS MH, 47 L.F. 33" Brick Arch (E), & 38 L.F. 33" Brick Arch (W)
106+72	Rt.	SWS MH, 26 L.F. 12" VCP (N)
106+93	Lt.	Traffic Signal Junction Box
106+96	Lt.	Curb Inlet & 24 L.F. 8" VCP (S)
106+97	Rt.	Curb Inlet
107+10	Rt.	Traffic Signal Pole
107+28	Rt.	Sign

* For Information Only

NOTE: Proposed top of curb elevations shown are computed based on full height curb. Adjust elevations for 1/2" lip curb locations.

- Utilities
- Gas Black Hills Energy
 - Power Westar Energy
 - Sanitary Sewer Wichita Water and Sanitary Sewer
 - Water Wichita Water and Sanitary Sewer

See Sh. No. R33 for table of Ad Adjustments of existing Manholes, Water Valve Boxes, Water Meter Boxes, and Fire Hydrants.

BM *104 Chiseled \square on SE corner of traffic signal base, SW corner of St. Francis and 2nd St. intersection. 39' Lt. & Sta. 106+42 Elev. = 1298.44

LEGEND

- Pavement Removal
- Mill/Overlay
- Brick Pavers
- Wheelchair Ramp
- Match Existing

No.	Revision	By	Date
ST. FRANCIS STREET			
PLAN			
STA. 104+00 TO STA. 110+00			
JAMES L. ARMOUR, P.E. - CITY ENGINEER CITY OF WICHITA PROJECT NO. 472-84920			
Professional Engineering Consultants, P.A. 303 S. TOPEKA - WICHITA, KANSAS 67202 316-262-2691 • FAX 316-262-3003			
Designed by	JPS	Job No.	10310
Drawn by	SVB	Date	July, 2011
			Sh. R7 of 101