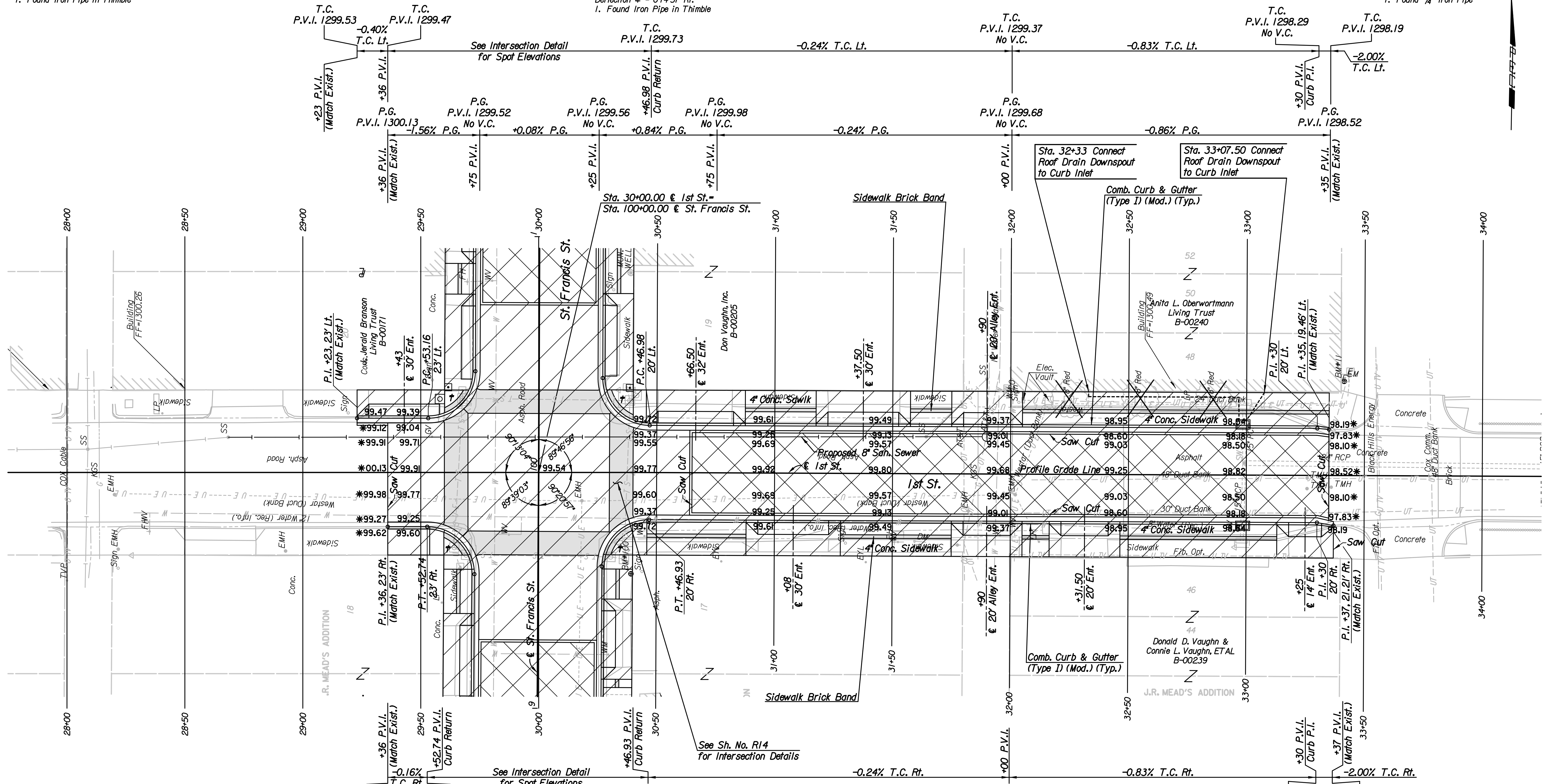


P.I. & Sta. 26+58.78  
1. Found Iron Pipe in Thimble

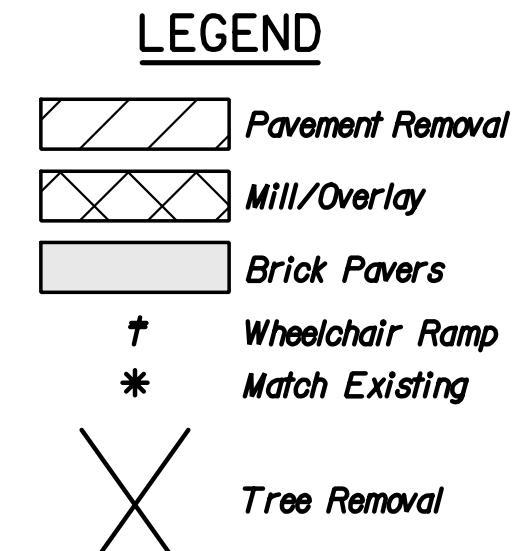
P.I. & Sta. 30+40.00  
Deflection  $\pm$  - 0'1'45" Rt.  
1. Found Iron Pipe in Thimble

P.I. & Sta. 35+52.61  
1. Found  $\frac{3}{4}$ " Iron Pipe



REMOVAL OF EXISTING STRUCTURES *		
STATION	SIDE	ITEM
31+30	Rt.	Sign
32+03	Lt.	Sign
32+12	Rt.	Light Pole
32+25	Lt.	8" Tree
32+55	Lt.	8" Tree
32+77	Lt.	Light Pole
32+86	Lt.	8" Tree
32+98.50	Rt.	7 L.F., 15" RCP
32+98.50	Lt.	8 L.F., 15" RCP

\* For Information Only



NOTE: Proposed top of curb elevations shown are computed based on full height curb. Adjust elevations for 1/2" lip curb locations.

- Utilities**
- Gas: Kansas Gas Service
  - Power: Westar Energy
  - Sanitary Sewer: Wichita Water and Sanitary Sewer
  - Telephone: AT&T
  - Telephone: Cox Communications
  - Television: Cox Communications
  - Water: Wichita Water and Sanitary Sewer

See Sh. No. R33 for table of Adjustments of existing Manholes, Water Valve Boxes, Water Meter Boxes, and Fire Hydrants.

Datum BM #11 Chiseled "D" at NE corner of concrete telephone pedestal base at SE corner of building, North of 1st St., West side of railroad. 40' Lt. & Sta. 33+41 NGVD 29 Elev. = 1298.97

BM #100 Chiseled "D" at SE corner of 1st St. and St. Francis, East side of sidewalk, 6' South of traffic signal pole. 43' Rt. & Sta. 30+39 Elev. = 1300.06

Plotted By: svb Date: 7/15/2011 7:45:47 AM  
 FILE: I:\2010\10310\Plan\10310-Plan 1st St.dgn

Revision		By	Date
<b>PLAN</b> <b>STA. 28+00 TO STA. 34+00</b> JAMES L. ARMOUR, P.E. - CITY ENGINEER CITY OF WICHITA PROJECT NO. 472-84920			
<b>Professional Engineering Consultants, P.A.</b> 303 S. TOPKA - WICHITA, KANSAS 67202 316-262-2691 • FAX 316-262-3003			
Designed by	JPS	Job No.	10310
Drawn by	SVB	Date	July, 2011
			Sh. R8 of 101