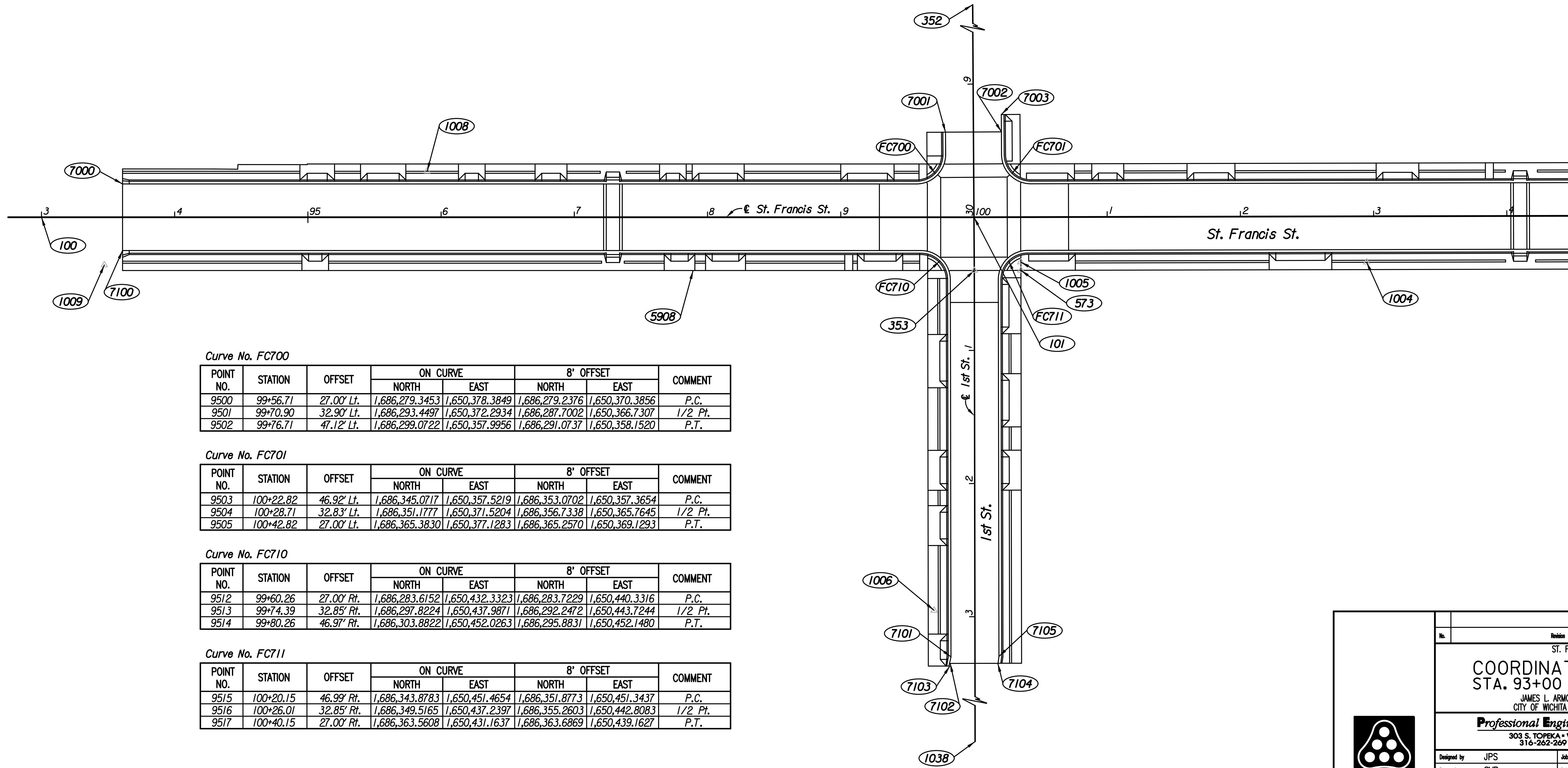
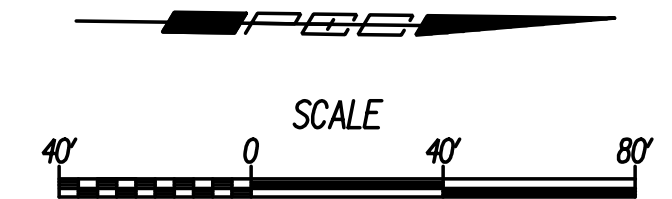


COORDINATE TABLE					
POINT NO.	NORTH COORDINATE	EAST COORDINATE	STATION	OFFSET	DESCRIPTION
100	1,685,623.0556	1,650,414.2251	93+00.00	0.00' Rt.	St. Francis & Point
101	1,686,322.9921	1,650,404.7996	100+00.00	0.00' Rt.	St. Francis & 1st St. & Point
7000	1,685,683.6034	1,650,388.4075	93+60.89	25.00' Lt.	Edge of Pavement/Edge of Curb
7001	1,686,300.7445	1,650,341.2233	29+36.00	21.00' Rt.	Edge of Pavement/Edge of Curb
7002	1,686,342.7365	1,650,340.4019	29+36.00	21.00' Lt.	Edge of Pavement/Edge of Curb
7003	1,686,342.4822	1,650,327.4044	29+23.00	21.00' Lt.	Edge of Pavement/Edge of Curb
7100	1,685,684.2767	1,650,438.4030	93+60.89	25.00' Rt.	Edge of Pavement/Edge of Curb
7101	1,686,310.1874	1,650,735.0329	33+30.00	18.00' Rt.	Edge of Pavement/Edge of Curb
7102	1,686,309.1555	1,650,740.0492	33+35.00	19.11' Rt.	Edge of Pavement/Edge of Curb
7103	1,686,308.7427	1,650,742.0557	33+37.00	19.55' Rt.	Edge of Pavement/Edge of Curb
7104	1,686,345.6009	1,650,739.4948	33+35.00	17.34' Lt.	Edge of Pavement/Edge of Curb
7105	1,686,346.1832	1,650,734.4854	33+30.00	18.00' Lt.	Edge of Pavement/Edge of Curb

NO.	Δ	R	T	L	E	P.C. COORDINATES		P.I. COORDINATES		P.T. COORDINATES		C.C. COORDINATES	
						NORTH	EAST	NORTH	EAST	NORTH	EAST	NORTH	EAST
						FC700	90°20'57"	20.00'	20.12'	31.54'	8.37'	1,686,279.3453	1,650,378.3849
FC701	89°46'56"	20.00'	19.92'	31.34'	8.23'	1,686,345.0717	1,650,357.5219	1,686,345.4614	1,650,377.4422	1,686,365.3830	1,650,377.1283	1,686,365.0679	1,650,357.1308
FC710	89°54'00"	20.00'	19.97'	31.38'	8.26'	1,686,283.6152	1,650,432.3323	1,686,303.5785	1,650,432.0635	1,686,303.8822	1,650,452.0263	1,686,283.8845	1,650,452.3305
FC711	89°58'07"	20.00'	19.99'	31.41'	8.28'	1,686,343.8783	1,650,451.4654	1,686,343.5742	1,650,431.4786	1,686,363.5608	1,650,431.1637	1,686,363.8759	1,650,451.1612

CONTROL POINTS					
POINT NO.	NORTH COORDINATE	EAST COORDINATE	STATION	OFFSET	DESCRIPTION
352	1,686,316.3188	1,650,063.6468	26+58.78	0.00' Rt.	Iron Pipe in Thimble
353	1,686,323.7744	1,650,444.7927	30+40.00	0.00' Rt.	Iron Pipe in Thimble
573	1,686,358.7701	1,650,444.2412	100+35.15	40.00' Rt.	Chiseled "+"
1004	1,686,618.1566	1,650,434.5469	102+94.66	34.39' Rt.	Mag Nail
1005	1,686,358.6013	1,650,437.9759	100+35.08	33.73' Rt.	Mag Nail
1006	1,686,297.0520	1,650,700.3996	32+95.17	30.61' Rt.	Mag Nail
1008	1,685,912.1058	1,650,375.6535	95+89.54	34.68' Lt.	Mag Nail
1009	1,685,670.7121	1,650,449.4469	93+47.18	35.86' Rt.	Chiseled "+"
1038	1,686,331.5712	1,650,957.3474	35+52.61	0.00' Rt.	3/4" Iron Pipe
5908	1,686,112.6851	1,650,447.6353	97+89.14	40.00' Rt.	3/4" Iron Pipe



Curve No. FC700

POINT NO.	STATION	OFFSET	ON CURVE		8' OFFSET		COMMENT
			NORTH	EAST	NORTH	EAST	
9500	99+56.71	27.00' Lt.	1,686,279.3453	1,650,378.3849	1,686,279.2376	1,650,370.3856	P.C.
9501	99+70.90	32.90' Lt.	1,686,293.4497	1,650,372.2934	1,686,287.7002	1,650,366.7307	1/2 Pt.
9502	99+76.71	47.12' Lt.	1,686,299.0722	1,650,357.9956	1,686,291.0737	1,650,358.1520	P.T.

Curve No. FC701

POINT NO.	STATION	OFFSET	ON CURVE		8' OFFSET		COMMENT
			NORTH	EAST	NORTH	EAST	
9503	100+22.82	46.92' Lt.	1,686,345.0717	1,650,357.5219	1,686,353.0702	1,650,357.3654	P.C.
9504	100+28.71	32.83' Lt.	1,686,351.1777	1,650,371.5204	1,686,356.7338	1,650,365.7645	1/2 Pt.
9505	100+42.82	27.00' Lt.	1,686,365.3830	1,650,377.1283	1,686,365.2570	1,650,369.1293	P.T.

Curve No. FC710

POINT NO.	STATION	OFFSET	ON CURVE		8' OFFSET		COMMENT
			NORTH	EAST	NORTH	EAST	
9512	99+60.26	27.00' Rt.	1,686,283.6152	1,650,432.3323	1,686,283.7229	1,650,440.3316	P.C.
9513	99+74.39	32.85' Rt.	1,686,297.8224	1,650,437.9871	1,686,292.2472	1,650,443.7244	1/2 Pt.
9514	99+80.26	46.97' Rt.	1,686,303.8822	1,650,452.0263	1,686,295.8831	1,650,452.1480	P.T.

Curve No. FC711

POINT NO.	STATION	OFFSET	ON CURVE		8' OFFSET		COMMENT
			NORTH	EAST	NORTH	EAST	
9515	100+20.15	46.99' Rt.	1,686,343.8783	1,650,451.4654	1,686,351.8773	1,650,451.3437	P.C.
9516	100+26.01	32.85' Rt.	1,686,349.5165	1,650,437.2397	1,686,355.2603	1,650,442.8083	1/2 Pt.
9517	100+40.15	27.00' Rt.	1,686,363.5608	1,650,431.1637	1,686,363.6869	1,650,439.1627	P.T.

Plotted By: svb Date: 7/13/2011 8:24:36 PM
 FILE: I:\2010\0310\Coordinate Geometry\0310-COG0 93.dgn

No.		Revision		By		Date	
ST. FRANCIS STREET COORDINATE GEOMETRY STA. 93+00 TO STA. 104+00 JAMES L. ARMOUR, P.E. - CITY ENGINEER CITY OF WICHITA PROJECT NO. 472-84920 Professional Engineering Consultants, P.A. 303 S. TOPEKA - WICHITA, KANSAS 67202 316-262-2691 • FAX 316-262-3003							
Designed by	JPS	Job No.	10310	Sheet	R10 of 101		
Drawn by	SVB	Date	July, 2011				